



LARAMIE COUNTY PLANNING & DEVELOPMENT DEPARTMENT

Planning • Building

MEMORANDUM

TO: Laramie County Board of County Commissioners

FROM: Michael Surface, Planner

DATE: November 16, 2021

TITLE: PUBLIC HEARING ONLY regarding a High Power Transmission Line by Black Hills Energy located in Sections 1, 12, 24, 25, 26, 28, 33, 34 and 35 T.13N., R.65W., And Sections 7, 18 and 19, T.13N., R.66W., of the 6th P.M. Laramie County WY

EXECUTIVE SUMMARY

No decision is required on this item. It is a public hearing only, as required by the Laramie County Land Use Regulations, Section 2-2-127. A resolution is attached indicating that a public hearing was held and that a route map was reviewed.

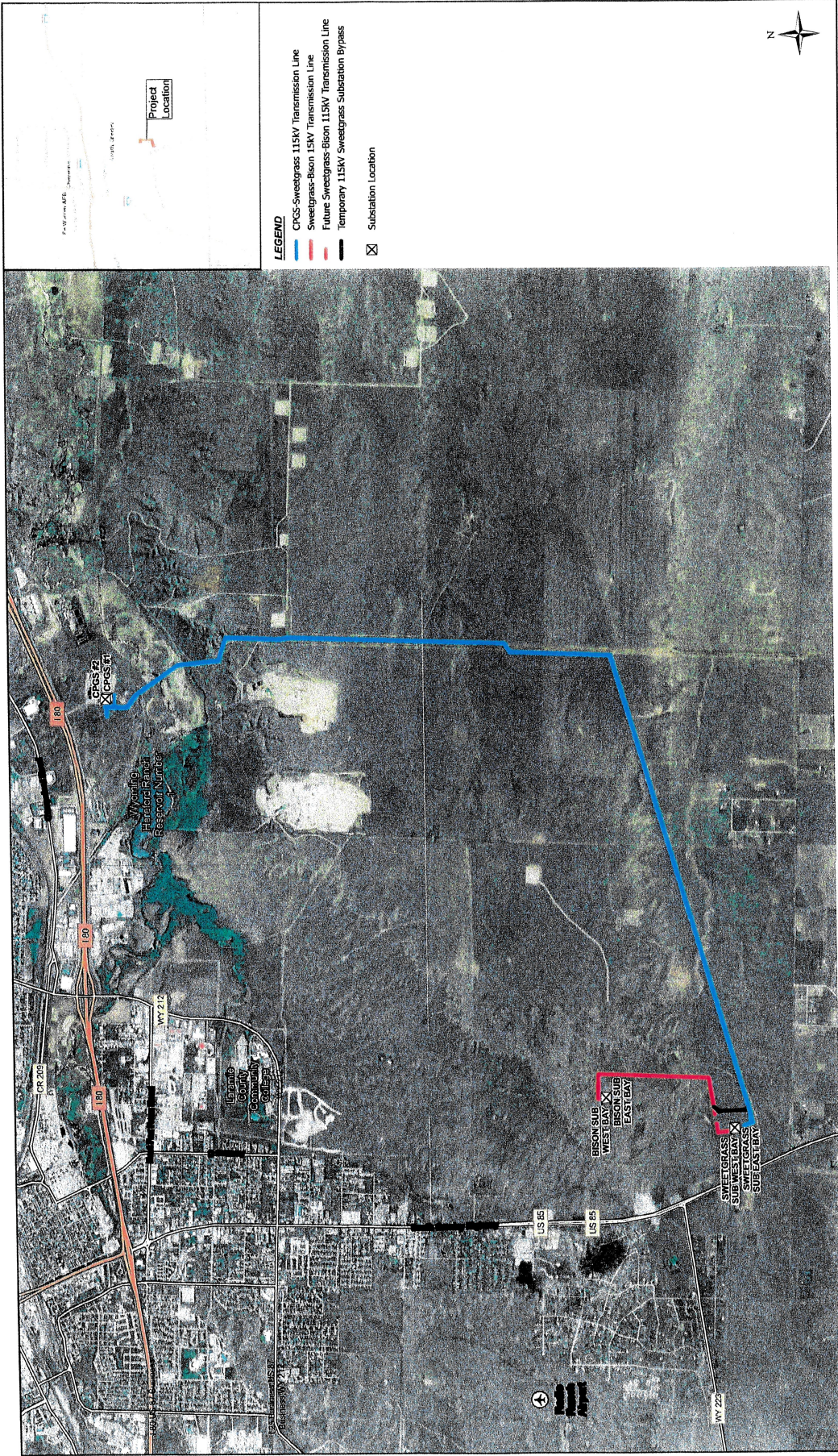
Black Hills Energy is proposing to build, own and operate high power transmission lines from CPGS substation to Sweetgrass substation, which crosses Laramie County for a distance of approximately eight (8) miles; and a second transmission line route from Sweetgrass substation to Bison Substation for a distance of approximately two (2) miles.

All public notice requirements of the Laramie County Land Use Regulations, Section 1-2-104 have been met to conduct the public hearing.

Project Description

Black Hills Energy (BHE or applicant) is proposing to build, own, and operate the transmission lines (Project). This Project will include a transmission line from CPGS substation to Sweetgrass substation, designed for 230kV but initially operated at 115kV, which crosses Laramie County north to south for a distance of approx. 8 miles; and a second transmission line from Sweetgrass substation to Bison substation, designed and operated at 115kV, which crosses Laramie County south to north for a distance of approx. 2 miles. The proposed transmission line will begin in a portion of Section 1, Township 13N, Range 66W, of the 6th P.M., Laramie County, WY at the CPGS substation, and then continues south to Section 33, Township 13N, Range 66W, of the 6th P.M., Laramie County, WY at the Sweetgrass substation. The second transmission line then continues north from the Sweetgrass substation to Section 28, Township 13N, Range 66W, of the 6th P.M., Laramie County, WY at the Bison substation.

Construction of the transmission line facilities will use a permanent easement 150 feet in width for CPGS to Sweetgrass and 100 feet in width for Sweetgrass to Bison.





BLACK HILLS ENERGY
CHEYENNE, WYOMING

BISON - CPGS
115 KV TRANSMISSION LINE

ROUTE MAP

FILENAME: Sweetgrass_Bison
SCALE: 1 inch equals 1,750 feet
SHEET

PROJECT MANAGER	
PROJECT NUMBER	
DESIGN ENGINEER	
DESIGN TECHNICIAN	
E.O.A.	
PROJECT NUMBER	

ISSUE	DATE	DESCRIPTION
09/27/2021		

RESOLUTION # _____

**ENTITLED: A RESOLUTION FOR A PUBLIC HEARING FOR THE BLACK HILLS
HIGH POWER TRANSMISSION LINES.**

WHEREAS, Wyoming State Statutes §18-5-201 to 18-5-208; §18-5-301 to 18-5-315 authorize Laramie County, in promoting the public health, safety, morals and general welfare of the county, to regulate the use of land in unincorporated Laramie County; and

WHEREAS, The Laramie County Board of Commissioners have previously adopted the Laramie County Land Use Regulations; and

WHEREAS, this application conforms with Section 2-2-127 of the Laramie County Land Use Regulations governing approval criteria for high power transmission lines; and

NOW THEREFORE BE IT RESOLVED BY THE GOVERNING BODY OF LARAMIE COUNTY, WYOMING, as follows:

The Laramie County Board of Commissioners finds that this application satisfies Section 2-2-127 of the Laramie County Land Use Regulations in that both a public hearing has occurred and a route map has been or is being reviewed by the Laramie County Planning Department.

PRESENTED AND ADOPTED this _____ day of _____, 2021.

LARAMIE COUNTY BOARD OF COMMISSIONERS

Gunnar Malm, Chairman

ATTEST:

Debra K. Lee, Laramie County Clerk

Reviewed and approved as to form:



Laramie County Attorney's Office