

RESOLUTION NO.

A RESOLUTION AUTHORIZING THE SUBMISSION OF A RATIFIED GRANT APPLICATION TO THE CHEYENNE COMMUNITY PUBLIC RECREATION DISTRICT, FOR FUNDING TOWARDS BASKETBALL COURTS FOR CLEAR CREEK PARK, ON BEHALF OF THE GOVERNING BODY OF LARAMIE COUNTY, WYOMING IN THE AMOUNT OF \$50,000.

FOR THE PURPOSE OF: REQUESTED FUNDS WILL BE USED BY THE COUNTY TO INSTALL AN 80' BY 100' BASKETBALL COURTS TO BE LOCATED AT CLEAR CREEK PARK.

WITNESSETH

WHEREAS, the Governing Body of Laramie County desires to participate in the Cheyenne Community Public Recreation District grant by sponsoring this grant application to assist in financing this project; and

WHEREAS, the Governing Body of Laramie County has been provided with preliminary cost estimates and information on this project; and

NOW, THEREFORE, BE IT RESOLVED BY THE GOVERNING BODY OF LARAMIE COUNTY that a grant application in the amount of \$50,000 be submitted to the Cheyenne Community Public Recreation District for consideration of assistance in funding basketball courts and that the county agrees to provide matching funds above the \$50,000 grant application amount.

BE IT FURTHER RESOLVED, that Sandra Newland, or her successor in the position of Laramie County Grants Manager, is appointed as agent of the Laramie County Board of Commissioners to execute and submit applications and certifications for these funds and to receive funds and implement the programs funded under this grant.

PASSED, APPROVED AND ADOPTED THIS 6th DAY OF July 2021.

By: _____
Gunnar Malm, Chairman

Date: _____

ATTEST:

Debra Lee, Laramie County Clerk

Date: _____

Received and Approved as to Form only By:

Laramie County Attorney's Office

Date: 7/14/21

CHEYENNE COMMUNITY PUBLIC RECREATION DISTRICT
PROJECT SUBMISSION FORM

Please complete the following questions on a separate sheet of paper and attach to the project submission form with required signatures.

- 1) Describe the need for the requested project based on the current situation.
- 2) Outline your proposed resolution to the above stated need. (i.e. scope of work, equipment, time frame, other mitigating factors)
- 3) Who in LCSD #1 and the community will benefit from the project? (i.e. specific groups/users, general public, visitors, community-wide residents, etc.) Approximately how many people will benefit from the project?
- 4) Provide an itemized list of project equipment and cost. If there is a specific source/vendor you would like to use for your project, please identify. Please also include any PTO, activity or general funds and in-kind donations that will be contributed to the project. If you would like assistance preparing your cost estimate, please contact any of the personnel listed in the application instructions.
- 5) Provide contact information for all project sponsors, including summer contact information.
- 6) Please attach project documentation (i.e. catalog pages, vendor information, pictures, maps, drawings, etc.)


Signature of Chariman


Date

Gunnar Malm
Print Name

Chairman of the Laramie County Commissioners
Title/Position

***Funding for proposed project is expressly contingent upon approval by the Recreation Board.**

Forms to be submitted on or before June 15th at 4:30 PM to:

**LCSD #1 Planning and Construction Office
2810 House Avenue Room 205
Cheyenne, WY 82001**

If June 15th falls on a weekend, the deadline moves to the preceding Friday.

Cheyenne Community Public Recreation District Narrative

1. In 2014 the County Commissioners allocated funds to the Laramie County Recreation Planning and Advisory Board for the purpose of re-imagining a dilapidated Laramie County Park, named Clear Creek Park. The board has worked with an engineering firm (AVI) to come up with a conceptual design and several components of this revitalization have occurred to include new restrooms, picnic shelter, new playground, and a bicycle playground. The CCRD board has contributed funding to the playground and bicycle playground at Clear Creek Park.

There are no parks or schools within walking distance of Clear Creek Park. The park is located by the I-80 and I-25 Interchange. The closest school is Goins Elementary School located three miles Southeast of Clear Creek Park, a seven minute commute by vehicle and requires crossing of I-80. There are three parks that are all around three miles away; one to the East (Martin Luther King Park), one to the North (Pioneer Park) and one to the Southeast (Civitan Park). All of these parks require a commute by vehicle. The City of Cheyenne has three outdoor basketball courts located at Jaycee Park, Holliday Park and Martin Luther King Park and average from 1.2 to 3.1 miles away from Clear Creek Park.

The County Commissioners and the Recreation Board have collaborated to revive this park and make it a destination place for families and groups in the community. We are requesting funding to expand on the recreational opportunities at Clear Creek Park, by bringing in basketball courts. Our request provides another avenue for the youth to pursue physical activity through basketball. Clear Creek Park is Laramie County's only formal park outside of the Archer Complex. A large park that is 45 acres welcomes a wide variety of youth activities and has space to add additional recreational opportunities targeting youth and families.

2. Laramie County in partnership with the Laramie County Recreation Planning and Advisory Board is seeking funding to assist in bring two standard basketball courts with hoops to Clear Creek Park. Our expected outcomes are very simple; we anticipate greater usage of the park by providing basketball courts. We predict that the community will be excited about the courts and that usage will be high. Having these basketball courts will provide the community of Laramie County with a safe recreational activity. Basketball provides youth with several tangible benefits to include exercise, balance, hand/eye coordination, good sportsmanship, agility, strategy, and social skills.

This project would enhance recreational opportunities afforded to youth in Laramie County. Clear Creek Park is located in an area that is considered low to moderate income and the youth that live and play in this area do not always have the best access to safe recreational activities. This project would aid in creating a safe area for fun and socialization along with promoting exercise and fitness.

If selected for funding, we could start immediately with the formal quote and bid process to select qualified vendors to provide this equipment. County procedures for purchasing would be followed. We have conducted basic research into existing vendors who might be interested in our project; some of this documentation is attached providing pictures on the type of courts and equipment that we are requesting.

3. This public park is open from 7am until dusk, seven days a week. On average we estimate that fifteen kids play in the park per day and that one hundred twenty five kid's access the park on a weekly basis. Per year we reviewed our rental usage of the shelter and park and the weekly usage associated with outside activities. There is a higher usage of the park in the warmer months than there is during the Wyoming winter. Being a public park, the park is open to everyone.

The shelter at Clear Creek Park is the largest picnic shelter in Laramie County, allowing large groups and families to gather to utilize the park. On average, the park shelter is rented continuously throughout the summer months. Clear Creek Park is primarily utilized by local residents, but often attracts pass thru traffic as it can be seen from I-80. If basketball courts are located at the park, we anticipate them being used daily to coincide with other recreational opportunities such as the playground, and bicycle playground. We expect that basketball courts will attract a new demographic to our park and increase visibility to the wonderful accommodations currently located at Clear Creek.

4. Budget Details

We are requesting \$50,000 towards our basketball court project; we are open and flexible to the vendor and details of the basketball courts.

We would like to put in an 80' by 100' pad, which is the same as the Holiday Park Courts here in Cheyenne. We have attached a site plan showing the location of the basketball courts.

We anticipate that the overall project will cost \$105,000 for the two courts (paved) and four basketball hoops permanently affixed.

Ground work preparation costs, permit fees, landscaping and irrigation repair along with construction drawings \$20,000

Cost of concrete or asphalt for base \$65,000

Basket Hoops and nets (includes installation) \$16,000

Court Detail/markings costs \$3,000

Total Cost \$105,000.00

County matching \$55,000.00

At this time, Laramie County has funded over \$600,000 towards the shelter, restroom and infrastructure. CCRD has contributed \$100,000 to the park through the Playground and Bicycle Playground.

Laramie County

- a. Gunnar Malm-Chairman
310 W. 19th Street, Suite 300
Cheyenne, WY 82001
307-633-4260
gmalm@laramiecounty.com

- b. Sandra Newland-Laramie County Grants Manager

310 W. 19th Street, Suite 140
Cheyenne, WY 82001
307-633-4201
snewland@laramiecounty.com

- c. Laramie County Recreation Board-President Tom Morgan tommorgan444@gmail.com

5. Please see attachments



Clear Creek Park

Basketball Courts

251 Southwest Drive

Laramie County would like to bring two outdoor basketball courts to Clear Creek Park,

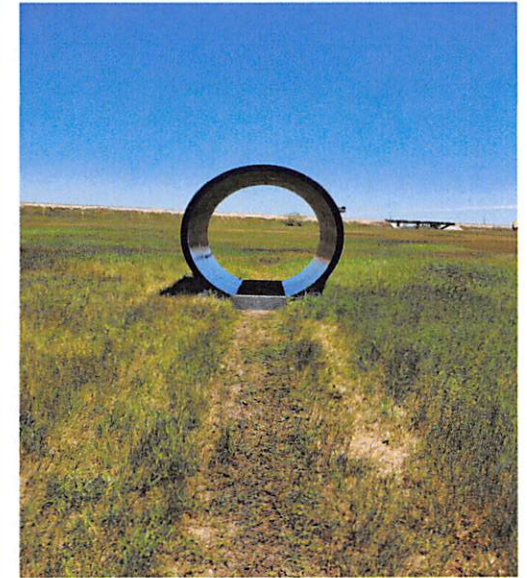
Located at 251 Southwest Drive.



Clear Creek Park has already seen several new developments over the past couple years to include restrooms, picnic shelter, playground and a bicycle playground.

What a perfect location to add basketball courts!

Property is owned by Laramie County.



Thanks to CCRD funding, we
added a
Bicycle Playground to Clear Creek
Park in 2019.



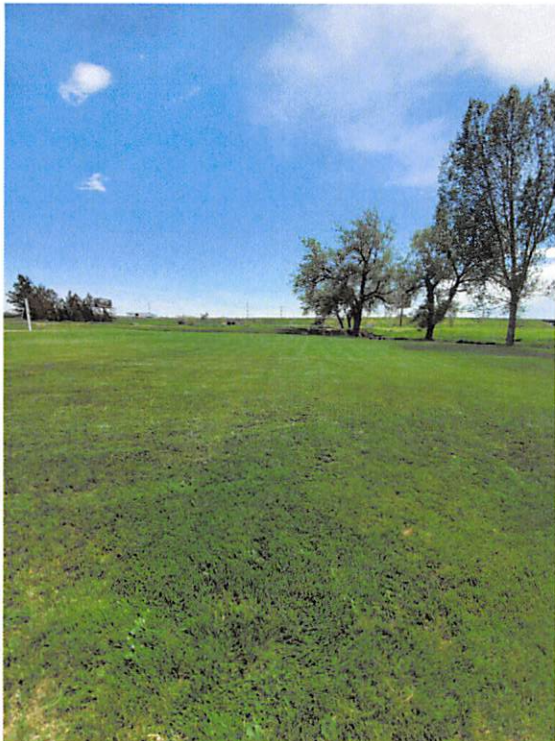
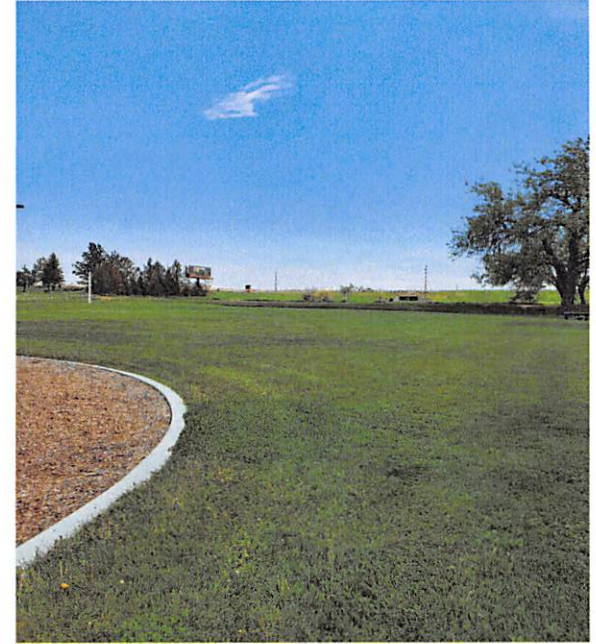
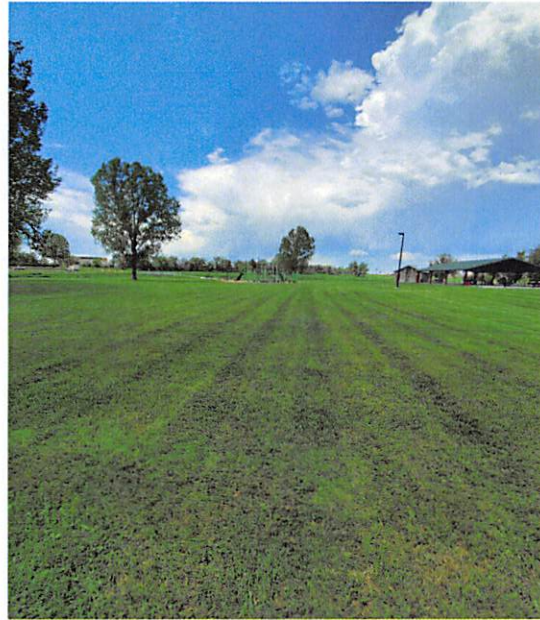
**A new playground was added
to Clear Creek Park in 2017
thanks in part to a previous
CCRD application!**





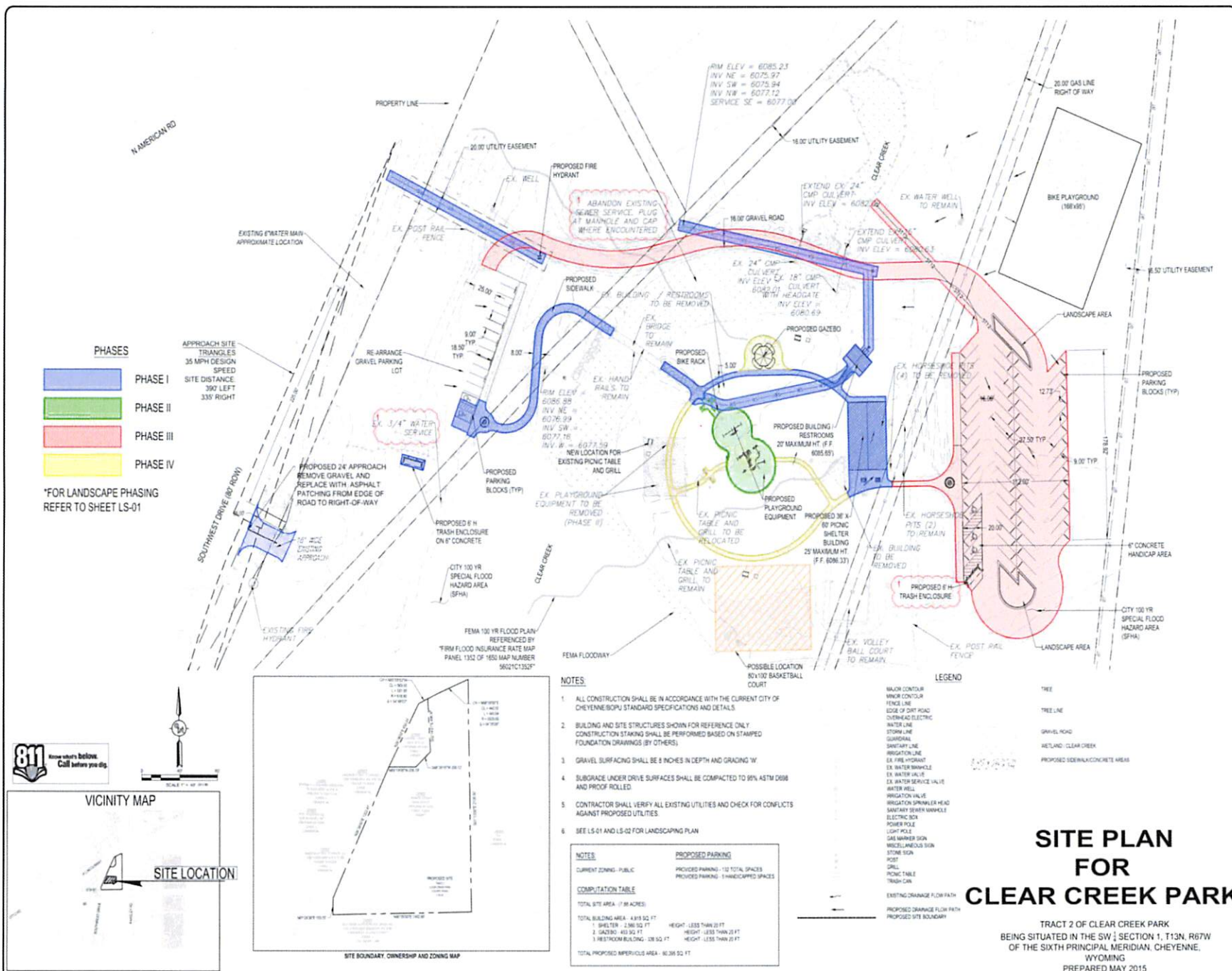
Clear Creek Park had a new restroom facility and a large picnic shelter added in 2016.





Pictures of the proposed location for the placement and installation of the requested basketball courts.

We would like to place an 80' by 100' pad in this area to install the two basketball courts.



DATE

12/04/15

REVISION

1

ADDendum #1

PROJECT

LARAMIE COUNTY PLANNING
RECREATION BOARD
309 W. 20TH ST.
CHEYENNE, WY 82001

PROJECT TITLE

CLEAR CREEK PARK

DATE

NOVEMBER 2015

DRAWN BY

CC

DESIGNED BY

CC

CHECKED BY

TC/BE

JOB NO.

3739

DRAWING NO.

6

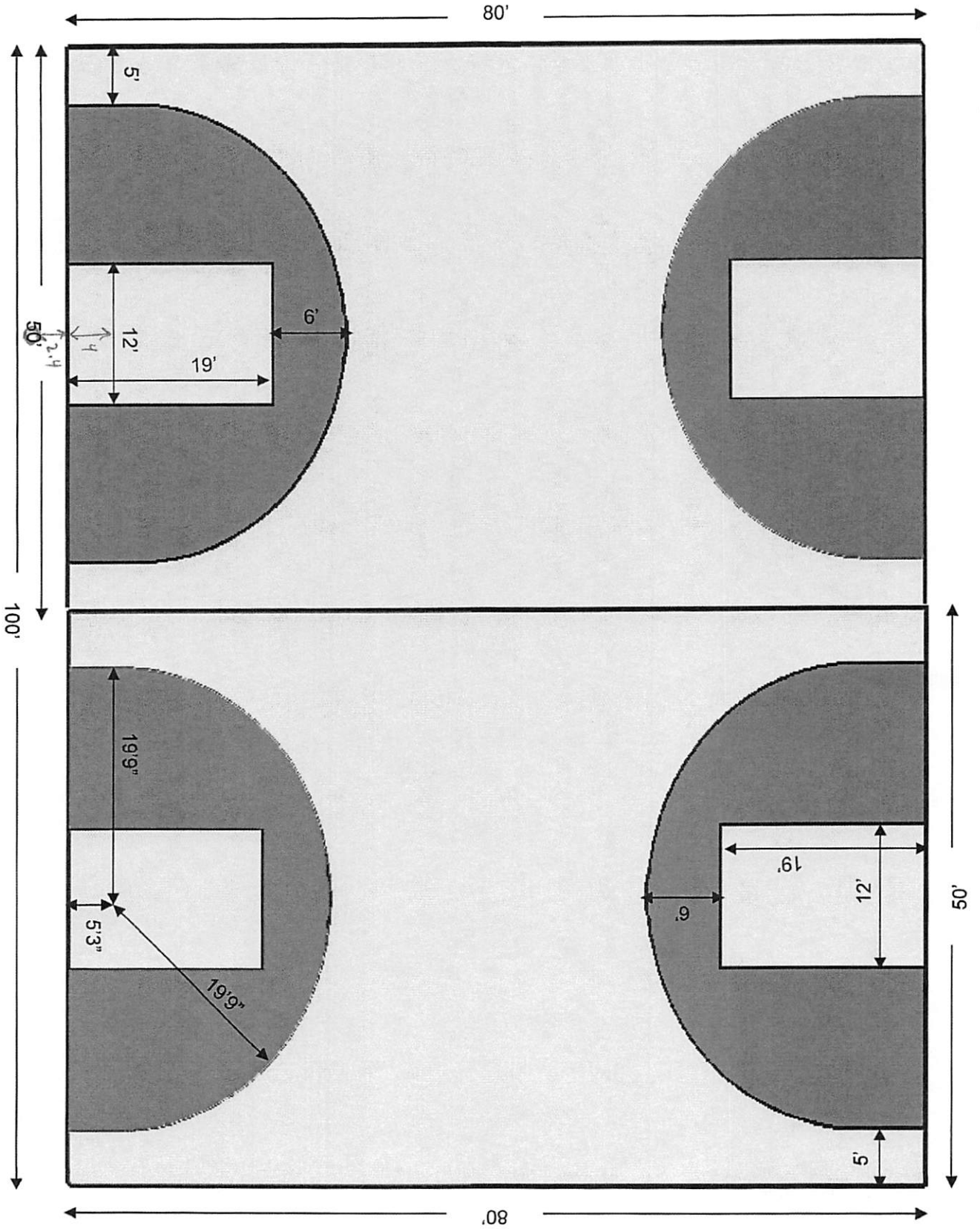
SITE PLAN FOR CLEAR CREEK PARK

TRACT 2 OF CLEAR CREEK PARK
BEING SITUATED IN THE SW 1/4 SECTION 1, T13N, R67W
OF THE SIXTH PRINCIPAL MERIDIAN, CHEYENNE,
WYOMING
PREPARED MAY 2015

This aerial map displays the 10000 block of East 10th Avenue. The map features a prominent winding water feature, possibly a stream or canal, that flows through the center of the area. To the left of the water feature, there are several large industrial or commercial buildings, including a large white warehouse-like structure. To the right, there are more buildings, some of which appear to be residential or smaller commercial units. The map is overlaid with black lines indicating property boundaries and blue lines indicating utility lines or easements. A north arrow and a scale bar are located in the bottom right corner of the map.

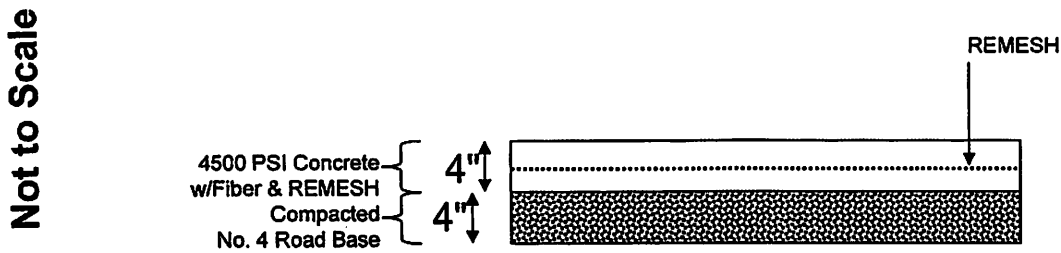
Concrete Detail

Not to Scale

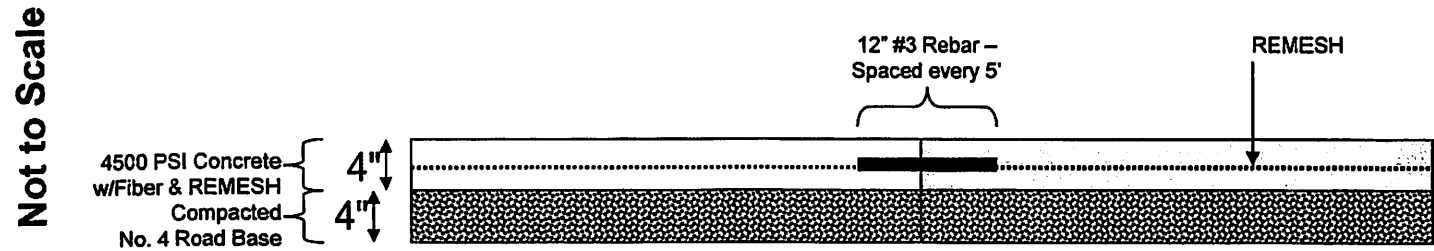


Concrete Detail

Concrete Pad Detail – Entire Pad



Concrete Pad Detail – Rebar Between Colors



Equipment to be provided by Parks & Recreation
Installation provided by contractor per manufacture instructions.

BBS-6

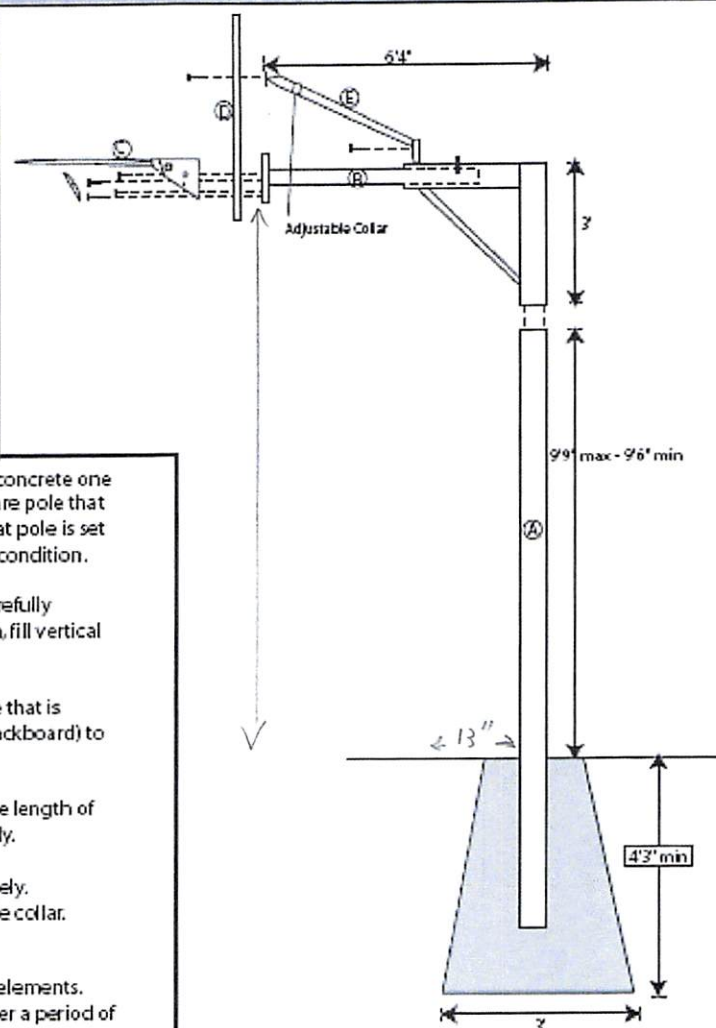
Parts List:

- A 1 - Pole 4" square x 3/16" x 13'3" long
- B 1 - Extension 6' long (standard)
- C 1 - Goal w/ net
- D 1 - Backboard
- E 1 - Pair adjustable sway braces
- 5 Pieces/unit
- 3 10#/unit

Tools:

- Shovel
- Level
- Ladder(s)
- 9/16" wrench
- socket wrench
- 9/16" socket
- concrete

1. Set pole to depth shown on the illustration. With concrete one foot below the pole. Make sure when setting square pole that flat side of pole is square with playing area and that pole is set straight. Concrete installation may vary upon soil condition.
2. After Pole has been set and properly mounted, Carefully mount extension arm to pole. To reduce vibration, fill vertical pole with concrete (Approximately 1-2 buckets).
3. Assemble goal and backboard using the hardware that is included, mount complete assembly (goal and backboard) to the extension arm Finger tighten only.
4. Mount upper end of support braces and Adjust the length of the lower end of support brace. Finger tighten only.
5. Square-up backboard and goal then tighten securely. Tighten sway braces at both ends and at adjustable collar. IMPORTANT to tighten securely at collar.
6. All parts of this pole are finished to withstand the elements. The weld area may require touch up with paint after a period of time. The entire unit may be painted if desired.



! SAFETY INSTRUCTIONS !

Failure to follow these instructions may result in injury or property damage. Owner must ensure that all players know and follow these rules for safe operation of this system.

- Failure to follow proper safety precautions during installation may result in serious injury. Please use extreme caution while installing this system. Components of this system are very heavy and may require a fork lift or other type of equipment.
- The longevity of your Basketball system depends on many conditions such as: the location, the climate, and any exposure to corrosives.
- DO NOT HANG on the rim or any part of the system.
- Do not climb, slide, shake or play on pole.
- Do not allow children to move or adjust system. Adult supervision is recommended.
- Serious injury could occur during play activity if teeth/face come in contact with backboard, net, or rim.
- During play, do not wear any jewelry or objects that may get caught in the net.
- If technical assistance is required please contact Douglas Industries.



LuckyDog Recreation
PO Box 603
Ashton, ID 83420

S&S quote

Quotation

Toll Free: 800-388-2196
Fax: 208-652-3285
Email: play@luckydrec.com

Project: Laramie County
Date: June 1, 2021

Estimate Valid

30

Terms

1/2 Down, Balance on receipt

Bill To:

S & S Builders, LLC

Contact: Landon Lembitz
Phone: 307-640-0472 (cell)
Email: llembitz@ssbuildersllc.com

Ship To:

Clear Creek Park
251 Southwest Drive
Cheyenne, WY 82001

Contact: Sandra Newland
Phone: 307-633-4201
Email: snewland@laramiecounty.com

Brand	Item Description	Model	Qty	Unit Price	Total Price
BISON	Heavy-Duty GooseNeck BB standad w/Aluminum	PR52	4	\$962.24	\$3,848.96
	Sub Total				\$3,848.96
	Freight		1	\$825.00	\$825.00

Additional Info:

SUPPLY ONLY

Quote is only good for 30 days due to volatile freight changes as of late. also, due to recent events many of our Suppliers are requiring the ½ down deposit be paid before the order will go into production. To not delay your order please make arrangements to pay the ½ down on equipment as soon as your estimate is signed & invoice is received.

Total	\$4,673.96
Tax 6.00%	\$230.94
Grand Total	\$4,904.90

Lynette Turner
208-652-7926
lynette@luckydrec.com

Accepted By: _____

Date: _____



Gillette: 307.686.5659
Cheyenne: 307.632.7115
ssbuildersllc.com
office@ssbuildersllc.com

June 7, 2021

To: Laramie County

Sub: Request for Proposal

Re: Clear Creek Basketball Courts - Full Scope

S & S Builders, LLC is pleased to provide you with budgetary pricing to include the following:

BidItem	Bid Description	Bid Quantit Units	Bid Total U.P.	Bid Total
10	Mobilization	1 LS	\$ 27,300.00	\$ 27,300.00
20	Strip Topsoil	183 CY	\$ 23.00	\$ 4,209.00
30	Place topsoil	40 CY	\$ 84.00	\$ 3,360.00
40	Haul Off Excess Topsoil	143 CY	\$ 19.00	\$ 2,717.00
50	Crushed Blase	110 TON	\$ 38.00	\$ 4,180.00
55	Install 4" Concrete Pad	8000 SF	\$ 7.40	\$ 59,200.00
60	Striping Paint Lines	1 LS	\$ 913.00	\$ 913.00
70	Irrigation repair Allowance	1 LS	\$ 3,650.00	\$ 3,650.00
80	Sod Replacment	3000 SF	\$ 2.45	\$ 7,350.00
90	Install Basketball Hoops	4 EA	\$ 3,050.00	\$ 12,200.00

We propose to perform this work for Lump Sum: \$125,079.00

Exclusions/Clarifications:

1. Permits by owner if needed.
2. Pricing is for Fall 2021 work.

If you have any questions, please contact this office,

Sincerely,

Landon J. Lembitz
Project Manager / Estimator
S & S Builders, LLC- Cheyenne

The above prices, specifications, and conditions are satisfactory and hereby accepted.
S & S Builders, LLC is authorized to do the work as specified. Payment will be made as outlined above.

Accepted by: _____ Date: _____

Printed Name: _____