

Resolution # _____

A RESOLUTION APPROVING WYOMING DOWNS, LLC TO CONDUCT PARI-MUTUEL WAGERING ON LIVE HORSE RACING, HISTORIC HORSE RACING, AND SIMULCAST EVENTS WITHIN LARAMIE COUNTY, WYOMING

WHEREAS, The Wyoming State Legislature passed and the Governor of the State of Wyoming signed into law changes to Wyoming Statutes, Title 11, Chapter 25, to permit pari-mutuel wagering on historic races (see Laws of Wyoming, 2013, Ch. 75); codified in Wyo. Stat. Ann. § 11-25-101 et seq. (as amended) and as defined in the Wyoming Gaming Commission Rules, Chapter 1(bb) and,

WHEREAS, the Wyoming Gaming Commission (f/k/a the Wyoming Pari-mutuel Commission) has adopted rules that were filed with the Secretary of State on December 18, 2013 regulating pari-mutuel wagering on simulcast events, including historic races; and,

WHEREAS, Wyoming Downs LLC, currently holds the necessary and appropriate permits issued by the Wyoming Gaming Commission to operate simulcasting facilities in the State of Wyoming; and,

WHEREAS, Wyoming Downs LLC, is desirous of expanding its operations into Laramie County, from a satellite facility located at 1345 Dell Range Blvd, Cheyenne, Wyoming 82009, to include pari-mutuel wagering on live horse racing, historic horse racing, and simulcast events; and,

NOW, THEREFORE, BE IT RESOLVED BY THE GOVERNING BOARD OF THE COUNTY OF LARAMIE, WYOMING: That, pursuant to Wyo. Stat. § 11-25-102(a)(vii)(B), the Laramie County Board of commissioners approves Wyoming Downs, LLC to conduct pari-mutuel wagering on live horse racing, historic horse racing, and simulcast events within Laramie County.

RESOLVED, this ____ day of October, 2020.

**BOARD OF COUNTY COMMISSIONERS
LARAMIE COUNTY, WYOMING**

Chairman

ATTEST:

Debra K. Lee, Laramie County Clerk

Reviewed and approved as to form:

Laramie County Attorney's Office



LARAMIE COUNTY

Who We Are

- The entity is Wyoming Downs LLC
- Wyoming Downs is located in Evanston and is the only privately owned racetrack in Wyoming. Wyoming Downs conducted live racing July thru August 2020 in Evanston and has been approved for 14 days of live racing in 2021. Revenue from simulcasting and historic racing subsidizes the purses during race season.
- Wyoming Downs has 9 off track wagering locations throughout Wyoming, with two locations currently operating in Cheyenne.
- Wyoming Downs is authorized by the State of Wyoming to conduct events for the conduct of horse racing which includes racing, simulcasting, historic racing, roping and a variety of horse events. We have a long history of conducting pari-mutuel business in Wyoming and have always conducted business in accordance with the rules and regulations of the Wyoming Parimutuel Commission now known as the Wyoming Gaming Commission.
- Wyoming Downs is required to be licensed annually by the Wyoming Gaming Commission and will need County approval.
- All staff require background checks and fingerprinting by the Wyoming Parimutuel Commission.
- Percentages of the total amount wagered go to the State, Horsemen in addition to the city and county.

Business plan

- Location is at **1345 Dell Range Blvd, Cheyenne**
- Wyoming Downs would host simulcasting of live horse racing and Historic Horse race terminals. *(See attached renderings for proposed location)*
- There will be approx. 10-17 live simulcast races to be displayed each day.
- There will be approx. 140 HHR terminals (Historic Horseracing Terminals) (upon approval from the Wyoming Gaming Commission). Specific types of games are submitted to the Wyoming Gaming Commission for approval of game theme prior to being placed in service.
- Leased space would host the off track wagering location which would offer pari-mutuel simulcasting and approximately 140 historic race terminals.
- Level of attendance expected: Would market to local and surrounding areas and project approx. 150 customers per day.
- Level of anticipated wagering: \$22,000/day
- All revenues would come from Pari-mutual wagering.

Business Plan Cont'd

- We expect the cost of operating the entire simulcast facility to be approx. \$15,000/day.
- Security: We will have onsite security personnel and security cameras on site, which are monitored on/off property.
- Type of data processing, communication, totalizator and transmission equipment to be utilized. We are contracted with Amtote and United Tote.
- Wyoming Downs received Laramie County approval to conduct business at its current locations in Cheyenne and is submitting this request for approval from Laramie County to operate an additional location at 1345 Dell Range Blvd.
- Estimated opening would take place in approximately 60-90 days.

Benefits to County:

- **Revenue to County:** 1% of Historical Race terminals of the total amount wagered goes to the County and City in equal shares distributable by the State of Wyoming Treasurers office. We are estimating an annual \$600,000 in annual taxes to be split 50/50 between city and county (\$300,000 to City of Cheyenne and \$300,000 to Laramie County).
 - Approximately 10 – 15 new jobs would be generated.
-

Client: City of Cheyenne

Project: 2018 International Code Family

Occupancy: Assembly (Group A)

Assembly Area (Group A)

Construction Type: Construction A-I

Fire Protection: Fire Protection A-I

Automatic Sprinkler: Automatic Sprinkler A-I

Fire Alarm: Fire Alarm A-I

Exit Signs: Exit Signs A-I

Exit Stairs: Exit Stairs A-I

Exit Doors: Exit Doors A-I

Exit Windows: Exit Windows A-I

Exit Ramps: Exit Ramps A-I

Exit Escalators: Exit Escalators A-I

Exit Elevators: Exit Elevators A-I

Exit Stairs: Exit Stairs A-I

Exit Doors: Exit Doors A-I

Exit Windows: Exit Windows A-I

Exit Ramps: Exit Ramps A-I

Exit Escalators: Exit Escalators A-I

Exit Elevators: Exit Elevators A-I

Exit Stairs: Exit Stairs A-I

Exit Doors: Exit Doors A-I

Exit Windows: Exit Windows A-I

Exit Ramps: Exit Ramps A-I

Exit Escalators: Exit Escalators A-I

Exit Elevators: Exit Elevators A-I

Exit Stairs: Exit Stairs A-I

Exit Doors: Exit Doors A-I

Exit Windows: Exit Windows A-I

Exit Ramps: Exit Ramps A-I

Exit Escalators: Exit Escalators A-I

Exit Elevators: Exit Elevators A-I

Exit Stairs: Exit Stairs A-I

Exit Doors: Exit Doors A-I

Exit Windows: Exit Windows A-I

Exit Ramps: Exit Ramps A-I

Exit Escalators: Exit Escalators A-I

Exit Elevators: Exit Elevators A-I

Exit Stairs: Exit Stairs A-I

Exit Doors: Exit Doors A-I

Exit Windows: Exit Windows A-I

Exit Ramps: Exit Ramps A-I

Exit Escalators: Exit Escalators A-I

Exit Elevators: Exit Elevators A-I

Exit Stairs: Exit Stairs A-I

Exit Doors: Exit Doors A-I

Exit Windows: Exit Windows A-I

Exit Ramps: Exit Ramps A-I

Exit Escalators: Exit Escalators A-I

Exit Elevators: Exit Elevators A-I

Exit Stairs: Exit Stairs A-I

Exit Doors: Exit Doors A-I

Exit Windows: Exit Windows A-I

Exit Ramps: Exit Ramps A-I

Exit Escalators: Exit Escalators A-I

Exit Elevators: Exit Elevators A-I

Exit Stairs: Exit Stairs A-I

Exit Doors: Exit Doors A-I

Exit Windows: Exit Windows A-I

Exit Ramps: Exit Ramps A-I

Exit Escalators: Exit Escalators A-I

Exit Elevators: Exit Elevators A-I

Exit Stairs: Exit Stairs A-I

Exit Doors: Exit Doors A-I

Exit Windows: Exit Windows A-I

Exit Ramps: Exit Ramps A-I

Exit Escalators: Exit Escalators A-I

Exit Elevators: Exit Elevators A-I

Exit Stairs: Exit Stairs A-I

Exit Doors: Exit Doors A-I

Exit Windows: Exit Windows A-I

Exit Ramps: Exit Ramps A-I

Exit Escalators: Exit Escalators A-I

Exit Elevators: Exit Elevators A-I

Exit Stairs: Exit Stairs A-I

Exit Doors: Exit Doors A-I

Exit Windows: Exit Windows A-I

Exit Ramps: Exit Ramps A-I

Exit Escalators: Exit Escalators A-I

Exit Elevators: Exit Elevators A-I

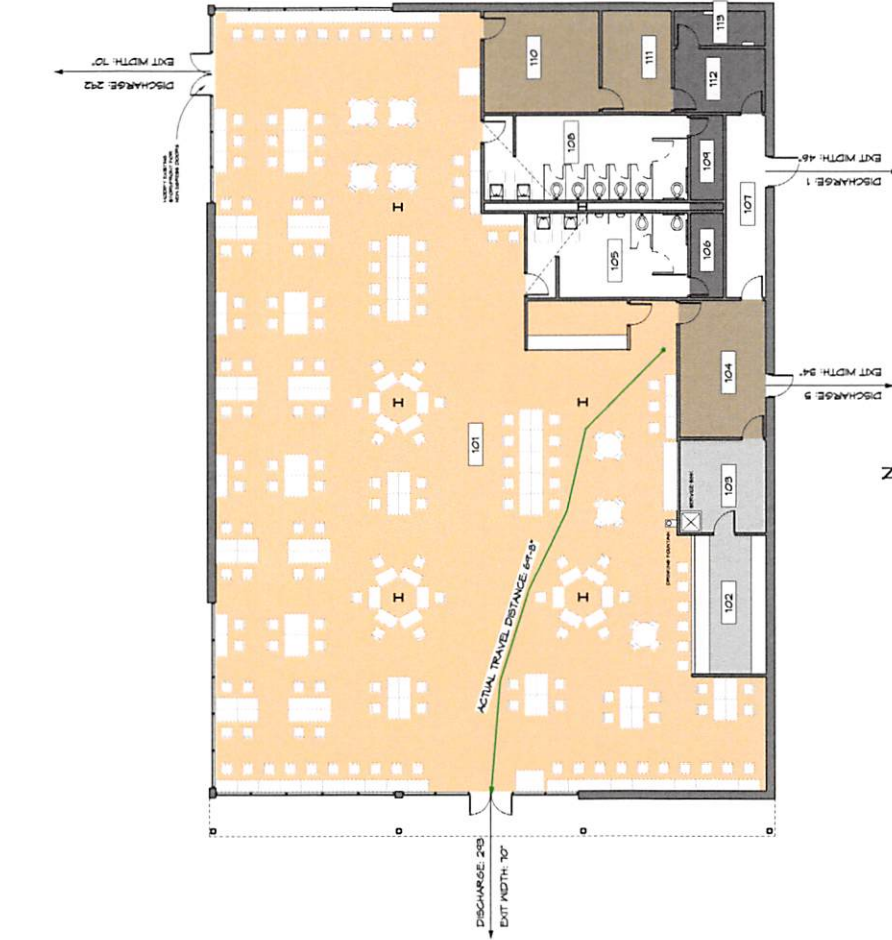
Exit Stairs: Exit Stairs A-I

Exit Doors: Exit Doors A-I

Exit Windows: Exit Windows A-I

Exit Ramps: Exit Ramps A-I

Exit Escalators: Exit Escalators A-I



1 MAIN FLOOR CODE PLAN
1/8" = 1'-0"

Number	Name	Occupancy	Area
101	Assembly Area	Assembly - Seating Floor	14,225 SF
102	Food Preparation Area	Food Preparation - Seating Floor	1,181 SF
103	Food Preparation Area	Food Preparation - Seating Floor	1,181 SF
104	Food Preparation Area	Food Preparation - Seating Floor	1,181 SF
105	Food Preparation Area	Food Preparation - Seating Floor	1,181 SF
106	Food Preparation Area	Food Preparation - Seating Floor	1,181 SF
107	Food Preparation Area	Food Preparation - Seating Floor	1,181 SF
108	Food Preparation Area	Food Preparation - Seating Floor	1,181 SF
109	Food Preparation Area	Food Preparation - Seating Floor	1,181 SF
110	Food Preparation Area	Food Preparation - Seating Floor	1,181 SF
111	Food Preparation Area	Food Preparation - Seating Floor	1,181 SF
112	Food Preparation Area	Food Preparation - Seating Floor	1,181 SF
113	Food Preparation Area	Food Preparation - Seating Floor	1,181 SF

SCALE 1/8" = 1'-0"

Remodel for:
Wyoming Downs
1345 Dell Range Blvd. Cheyenne, Wyoming

Job No. 2018-02
Date: 9/27/2018
Drawn By: JCB

REVISIONS

PRELIMINARY
NOT FOR
CONSTRUCTION

Code Plan

AC01

SCALE 3/4" = 1'-0"

1 FIRST FLOOR - DEMO PLAN
3/16/12

A101

Demolition plan

PRELIMINARY
NOT FOR
CONSTRUCTION

REVISIONS

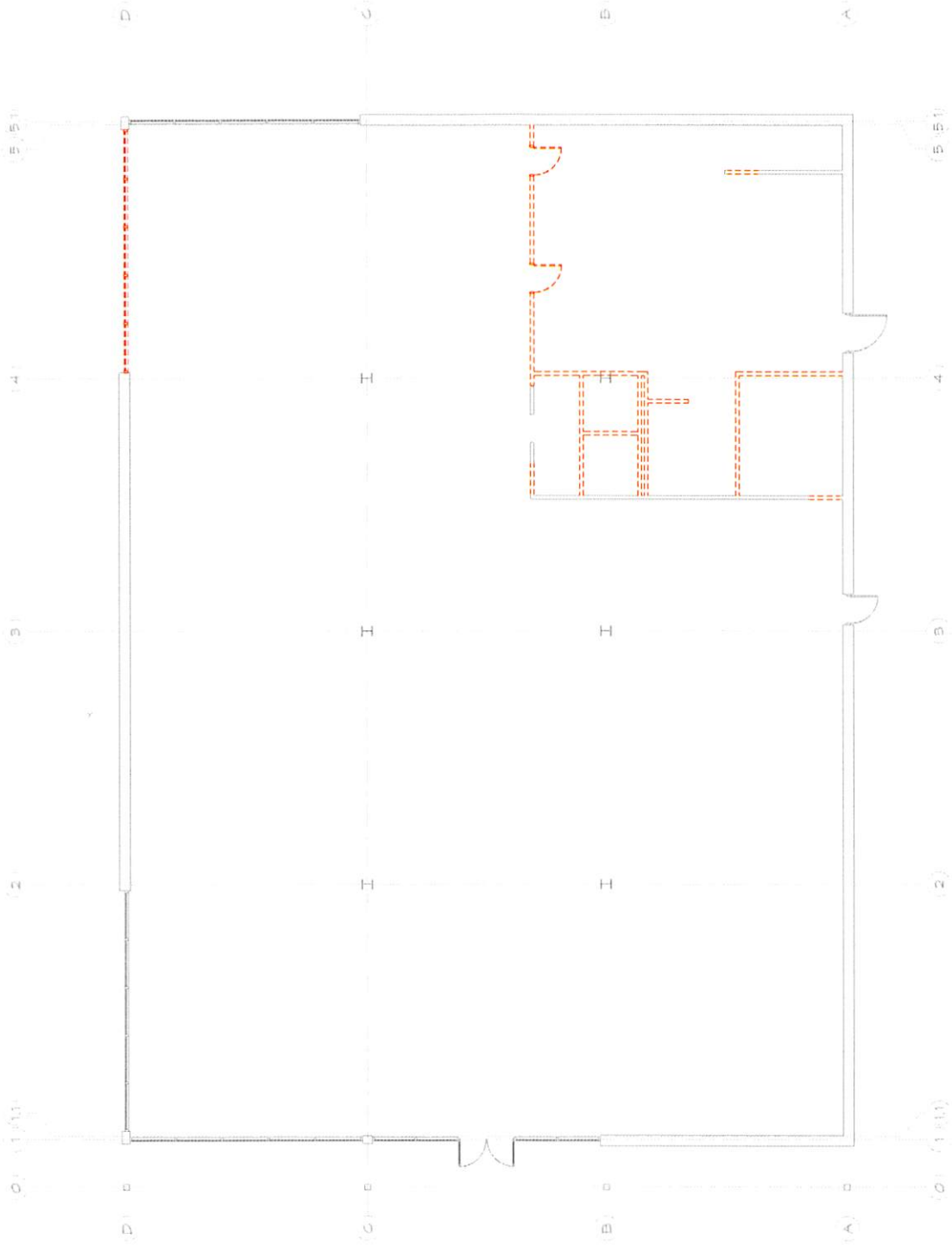
Drawn By: RJA

Date: 5/22/2010

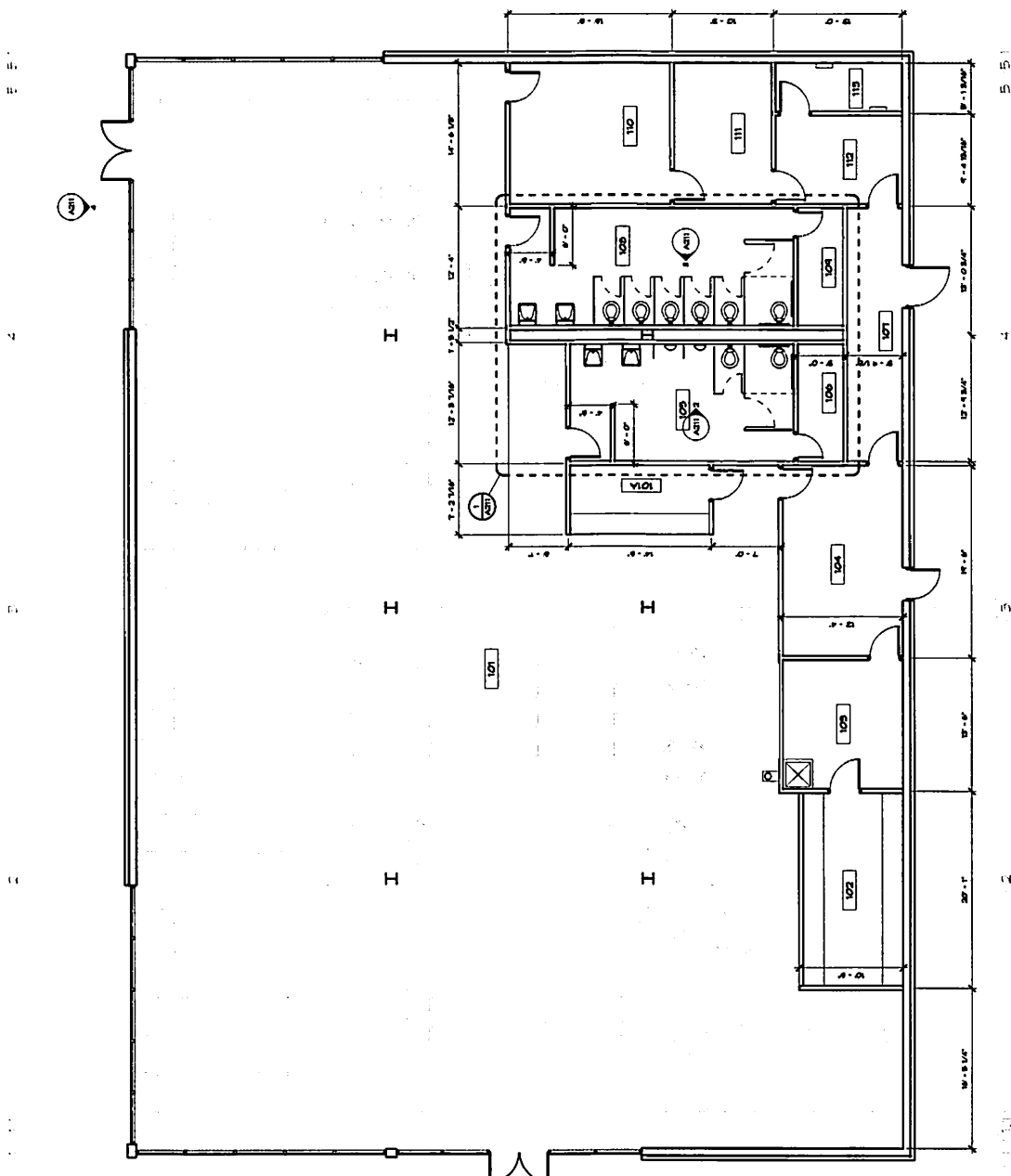
Job No: 2010-02

Remodel for:
Wyoming Downs
1345 Dell Range Blvd. Cheyenne, Wyoming

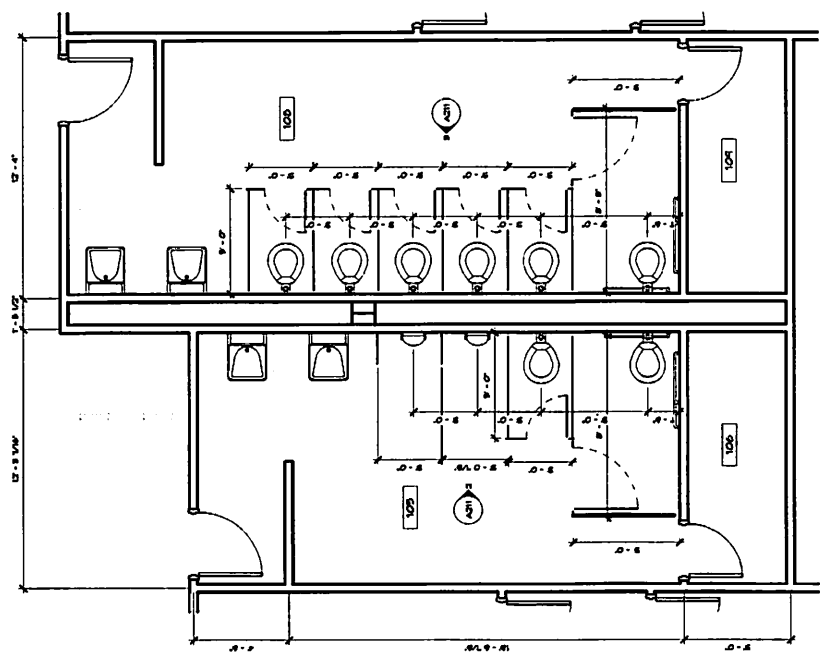
Hein Bond
ARCHITECTS
1917 South Ave. N. Cheyenne, WY 82001
(307) 234-1801



Number	Name	Occupancy	Area
101	RECEPTION	RECEPTION	100.00 SF
102	RECEPTION	RECEPTION	100.00 SF
103	RECEPTION	RECEPTION	100.00 SF
104	RECEPTION	RECEPTION	100.00 SF
105	RECEPTION	RECEPTION	100.00 SF
106	RECEPTION	RECEPTION	100.00 SF
107	RECEPTION	RECEPTION	100.00 SF
108	RECEPTION	RECEPTION	100.00 SF
109	RECEPTION	RECEPTION	100.00 SF
110	RECEPTION	RECEPTION	100.00 SF
111	RECEPTION	RECEPTION	100.00 SF
112	RECEPTION	RECEPTION	100.00 SF
113	RECEPTION	RECEPTION	100.00 SF
114	RECEPTION	RECEPTION	100.00 SF
115	RECEPTION	RECEPTION	100.00 SF
116	RECEPTION	RECEPTION	100.00 SF
117	RECEPTION	RECEPTION	100.00 SF
118	RECEPTION	RECEPTION	100.00 SF
119	RECEPTION	RECEPTION	100.00 SF
120	RECEPTION	RECEPTION	100.00 SF
121	RECEPTION	RECEPTION	100.00 SF
122	RECEPTION	RECEPTION	100.00 SF
123	RECEPTION	RECEPTION	100.00 SF
124	RECEPTION	RECEPTION	100.00 SF
125	RECEPTION	RECEPTION	100.00 SF
126	RECEPTION	RECEPTION	100.00 SF
127	RECEPTION	RECEPTION	100.00 SF
128	RECEPTION	RECEPTION	100.00 SF
129	RECEPTION	RECEPTION	100.00 SF
130	RECEPTION	RECEPTION	100.00 SF
131	RECEPTION	RECEPTION	100.00 SF
132	RECEPTION	RECEPTION	100.00 SF
133	RECEPTION	RECEPTION	100.00 SF
134	RECEPTION	RECEPTION	100.00 SF
135	RECEPTION	RECEPTION	100.00 SF
136	RECEPTION	RECEPTION	100.00 SF
137	RECEPTION	RECEPTION	100.00 SF
138	RECEPTION	RECEPTION	100.00 SF
139	RECEPTION	RECEPTION	100.00 SF
140	RECEPTION	RECEPTION	100.00 SF
141	RECEPTION	RECEPTION	100.00 SF
142	RECEPTION	RECEPTION	100.00 SF
143	RECEPTION	RECEPTION	100.00 SF
144	RECEPTION	RECEPTION	100.00 SF
145	RECEPTION	RECEPTION	100.00 SF
146	RECEPTION	RECEPTION	100.00 SF
147	RECEPTION	RECEPTION	100.00 SF
148	RECEPTION	RECEPTION	100.00 SF
149	RECEPTION	RECEPTION	100.00 SF
150	RECEPTION	RECEPTION	100.00 SF
151	RECEPTION	RECEPTION	100.00 SF
152	RECEPTION	RECEPTION	100.00 SF
153	RECEPTION	RECEPTION	100.00 SF
154	RECEPTION	RECEPTION	100.00 SF
155	RECEPTION	RECEPTION	100.00 SF
156	RECEPTION	RECEPTION	100.00 SF
157	RECEPTION	RECEPTION	100.00 SF
158	RECEPTION	RECEPTION	100.00 SF
159	RECEPTION	RECEPTION	100.00 SF
160	RECEPTION	RECEPTION	100.00 SF
161	RECEPTION	RECEPTION	100.00 SF
162	RECEPTION	RECEPTION	100.00 SF
163	RECEPTION	RECEPTION	100.00 SF
164	RECEPTION	RECEPTION	100.00 SF
165	RECEPTION	RECEPTION	100.00 SF
166	RECEPTION	RECEPTION	100.00 SF
167	RECEPTION	RECEPTION	100.00 SF
168	RECEPTION	RECEPTION	100.00 SF
169	RECEPTION	RECEPTION	100.00 SF
170	RECEPTION	RECEPTION	100.00 SF
171	RECEPTION	RECEPTION	100.00 SF
172	RECEPTION	RECEPTION	100.00 SF
173	RECEPTION	RECEPTION	100.00 SF
174	RECEPTION	RECEPTION	100.00 SF
175	RECEPTION	RECEPTION	100.00 SF
176	RECEPTION	RECEPTION	100.00 SF
177	RECEPTION	RECEPTION	100.00 SF
178	RECEPTION	RECEPTION	100.00 SF
179	RECEPTION	RECEPTION	100.00 SF
180	RECEPTION	RECEPTION	100.00 SF
181	RECEPTION	RECEPTION	100.00 SF
182	RECEPTION	RECEPTION	100.00 SF
183	RECEPTION	RECEPTION	100.00 SF
184	RECEPTION	RECEPTION	100.00 SF
185	RECEPTION	RECEPTION	100.00 SF
186	RECEPTION	RECEPTION	100.00 SF
187	RECEPTION	RECEPTION	100.00 SF
188	RECEPTION	RECEPTION	100.00 SF
189	RECEPTION	RECEPTION	100.00 SF
190	RECEPTION	RECEPTION	100.00 SF
191	RECEPTION	RECEPTION	100.00 SF
192	RECEPTION	RECEPTION	100.00 SF
193	RECEPTION	RECEPTION	100.00 SF
194	RECEPTION	RECEPTION	100.00 SF
195	RECEPTION	RECEPTION	100.00 SF
196	RECEPTION	RECEPTION	100.00 SF
197	RECEPTION	RECEPTION	100.00 SF
198	RECEPTION	RECEPTION	100.00 SF
199	RECEPTION	RECEPTION	100.00 SF
200	RECEPTION	RECEPTION	100.00 SF



① FIRST FLOOR - PROPOSED
3/8" = 1'-0"



1 FIRST FLOOR - PROPOSED - Callout 1
S.W.P. 1-07

License Number 206-1206-13

State of Wyoming

Mark Gordon, Governor

Pari-Mutuel Commission

2020

This is to certify that **Wyoming Downs LLC**, of Evanston, Wyoming, is hereby licensed to conduct a Simulcast Pari-Mutuel Event & Historic Horse Racing for the following dates; January 1, 2020 through December 31, 2020 under the Pari-Mutuel system in accordance with the Laws of Wyoming and The State of Wyoming Rules of Pari-Mutuel Events

At the following location:

Wyoming Downs, OTB
Cheyenne Plaza
3617 E. Lincolnway
Cheyenne, WY 82001

Dated this 2nd day of December, 2019

WYOMING PARI-MUTUEL COMMISSION, By


Charles E. Moore - Executive Director

THIS PERMIT SHALL BE PROMINENTLY DISPLAYED IN MUTUEL DEPARTMENT OR GENERAL OFFICE. THIS PERMIT IS NOT TRANSFERABLE OR ASSIGNABLE PURSUANT TO W.S. 11-25-105(a)

License Number 206-1206-13

State of Wyoming

Mark Gordon, Governor

Pari-Mutuel Commission

2020

This is to certify that **Wyoming Downs LLC**, of Evanston, Wyoming, is hereby licensed to conduct a Simulcast Pari-Mutuel Event & Historic Horse Racing for the following dates; January 1, 2020 through December 31, 2020 under the Pari-Mutuel system in accordance with the Laws of Wyoming, and The State of Wyoming Rules of Pari-Mutuel Events

At the following locations:

Wyoming Downs OTB
1925 Harrison Drive
Evanston, WY 82930

Wyoming Downs OTB
1294 Coffeen Avenue
Sheridan, WY 82801

El Mark-O Lanes/Galloways
2800 CY Avenue
Casper, WY 82604

Wyoming Downs OTB
2212 Westover Rd.
Gillette, WY 82718

Wyoming Downs OTB
2201 Footbill Blvd., Unit F
Rock Springs, WY 82901

Wyoming Downs OTB
359 Miracle Street
Evansville, WY 82636

Outlaw Saloon
312 S. Greeley Hwy
Cheyenne, WY 82007

Wyoming Downs OTB
750 North 3rd Street #666
Laramie, WY 82070

Wyoming Downs OTB
3617 E. Lincolnway
Cheyenne, WY 82001

Dated this 2nd day of December, 2019

WYOMING PARI-MUTUEL COMMISSION, By



Charles E. Moore - Executive Director