

**RESOLUTION # \_\_\_\_\_**

**A RESOLUTION CHANGING THE BOUNDARIES OF PRECINCT 1-1, 1-2  
AND CHANGING THE BOUNDARIES OF 5-2 AND 5-3 IN ORDER  
TO CREATE NEW PRECINCT 5-4 FOR THE MUNICIPALITY OF PINE BLUFFS  
LARAMIE COUNTY, WYOMING, AND DETERMINING NUMBER OF PRECINCT  
COMMITTEE OFFICERS TO BE ELECTED**

**WHEREAS** the Board of County Commissioners of Laramie County, Wyoming is required by W.S. 22-7-102, upon the advice or recommendation of the County Clerk, to finalize precinct boundaries at a designated meeting following required public notifications; and

**WHEREAS** notice of the proposed changes and boundary descriptions were provided to the chairperson of each political party in Laramie County and notice describing the proposed boundaries was duly published according to law; and

**WHEREAS** W.S. 22-4-101(c) defines the process for determining the number of precinct committeemen and committeewomen to which a precinct is entitled in a general election year if a precinct boundary line is change; and

**NOW THEREFORE BE IT RESOLVED** by the Board of County Commissioners of Laramie County, State of Wyoming, that:

The precinct boundary changes and the number of precinct committeemen and committeewomen to which each precinct is entitled as detailed in the lists attached to and made part of this resolution be adopted for Laramie County and in effect for elections held in 2024.

**ADOPTED AND APPROVED** as of the \_\_\_\_ day of April, 2024.

LARAMIE COUNTY, STATE OF WYOMING

\_\_\_\_\_  
Chairman,  
Board of Laramie County Commissioners

ATTEST:

\_\_\_\_\_  
Debra K. Lee  
Laramie County Clerk

Reviewed and approved as to form:

\_\_\_\_\_  
County Attorney's Office

FINAL PRECINCT CHANGES AND NEW BOUNDARIES FOR AFFECTED PRECINCTS  
FOR THE 2024 ELECTIONS.

PROPOSED CHANGES

Alter **1-1** to include all of existing 1-1 and the portion of 1-2 south of Interstate 80, the remainder portion of **1-2** will remain as 1-2

Create new precinct **5-4** for the municipality of Pine Bluffs from municipality portions of 5-2 and 5-3, the remainder portions of **5-2** and **5-3** will remain respectively.

2024 PARTY PRECINCT COMMITTEE ALLOCATIONS  
FOR CHANGED AND NEW PRECINCT BOUNDARIES  
LARAMIE COUNTY, WY

Precinct	Republican	Democratic
1-1	2	1
1-2	2	1
5-2	3	1
5-3	2	1
<i>(New)</i> 5-4	2	1

## PUBLIC HEARING PRECINCT BOUNDARY CHANGES

Pursuant to W.S. 22-7-102, the Laramie County Board of Commissioners will hold a public hearing on proposed changes to election precinct boundaries on April 2, 2024, at 3:30 pm, Historic Courthouse, 310 W 19th St, 3rd floor. The proposed changes, to be in effect for elections held in 2024, do not affect polling places in Laramie County where voters may cast their ballot at any vote center within the county.

The following changes are proposed:

Alter **1-1** to include all of existing 1-1 and the portion of 1-2 south of Interstate 80, the remainder portion of **1-2** will remain as 1-2

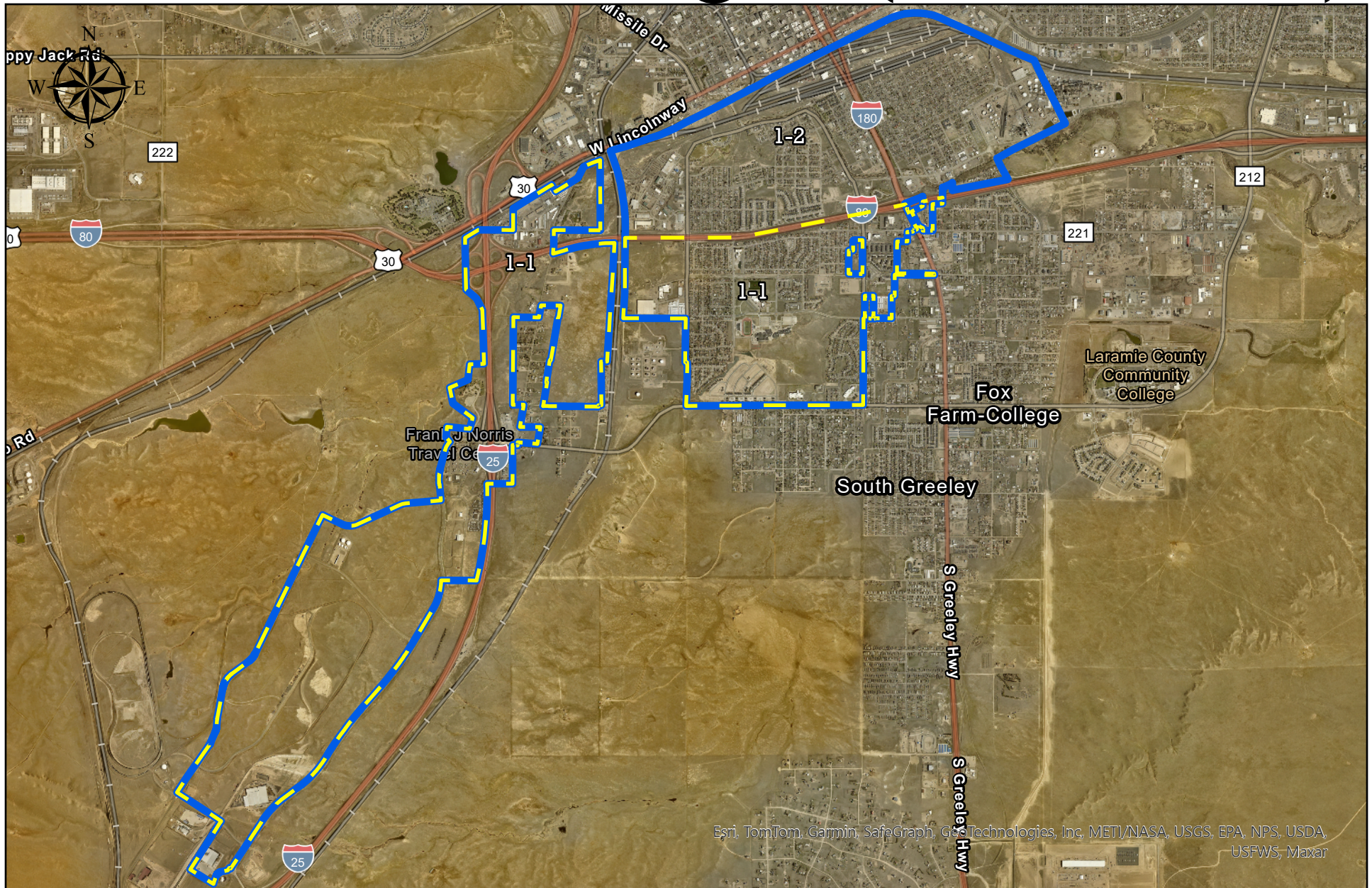
Create new precinct **5-4** for the municipality of Pine Bluffs from municipality portions of 5-2 and 5-3, the remainder portions of **5-2** and **5-3** will remain respectively.

/s/ Debra Lee, Laramie County Clerk

Publish Tribune-Eagle: March 20 and 27, 2024

Publish Pine Bluffs Post: March 21 and 28, 2024

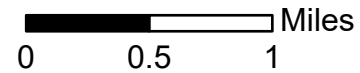
# Precinct Changes(1-1 & 1-2)



Esri, TomTom, Garmin, SafeGraph, Geotitles, Inc, METI/NASA, USGS, EPA, NPS, USDA, USFWS, Maxar



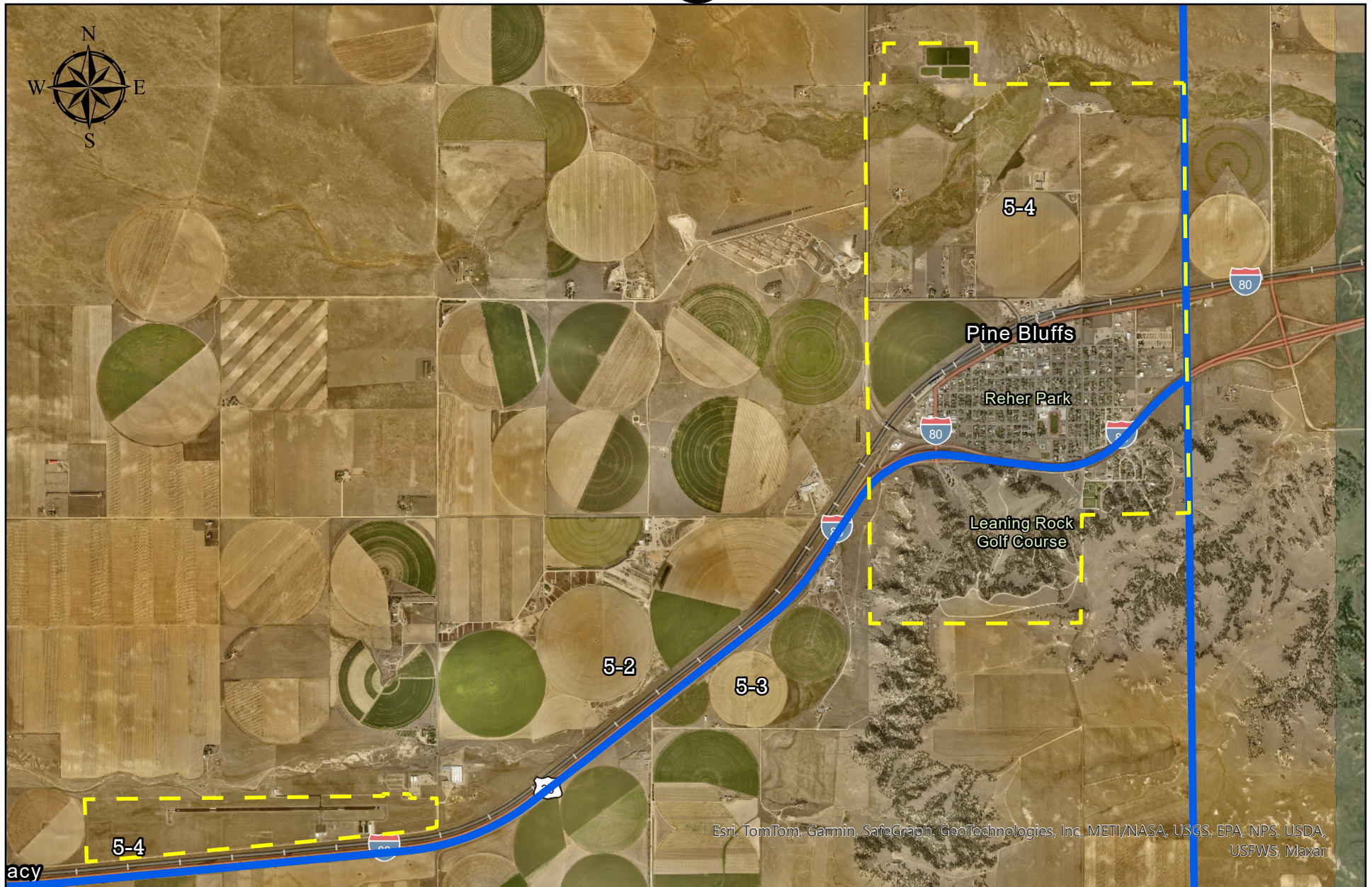
THIS MAP IS MADE POSSIBLE THROUGH THE CHEYENNE AND LARAMIE COUNTY GIS COOPERATIVE (CLCGISC) AND IS FOR DISPLAY PURPOSES ONLY. THE CLCGISC INVOKES ITS SOVEREIGN AND GOVERNMENTAL IMMUNITY IN ALLOWING ACCESS TO OR USE OF THIS DATA. MAKES NO WARRANTIES AS TO THE VALIDITY, AND ASSUMES NO LIABILITY ASSOCIATED WITH THE USE OR MISUSE OF THIS INFORMATION.



## Legend

- Old Precincts
- New Precincts

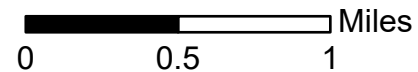
# Precinct Changes-Pine Bluffs



Esri, TomTom, Garmin, SafeGraph, GeoTechnologies, Inc, METI/NASA, USGS, EPA, NPS, USDA, USFWS, Maxar



THIS MAP IS MADE POSSIBLE THROUGH THE CHEYENNE AND LARAMIE COUNTY GIS COOPERATIVE (CLCGISC) AND IS FOR DISPLAY PURPOSES ONLY. THE CLCGISC INVOKES ITS SOVEREIGN AND GOVERNMENTAL IMMUNITY IN ALLOWING ACCESS TO OR USE OF THIS DATA. MAKES NO WARRANTIES AS TO THE VALIDITY, AND ASSUMES NO LIABILITY ASSOCIATED WITH THE USE OR MISUSE OF THIS INFORMATION.



## Legend

- Old Precincts
- New Precincts