

2023

**WILDLAND FIRE MANAGEMENT
OPERATING PLAN**

PREAMBLE

This operating plan is prepared pursuant to the Wyoming Interagency Cooperative Fire Management Agreement USDA Forest Service 22-FI-11020000-002, USDI Bureau of Land Management BLM MOU WY-914-22-01, USDI National Park Service Z12-492200001, USDI Bureau of Indian Affairs 22C00443200 and the USDI Fish and Wildlife Service 22-FF06R03000-27-S001.

PURPOSE

This is a Sub-Geographic Area Operating Plan (OP) meant to address issues affecting cooperation, interagency working relationships and protocols, financial arrangements, and joint activities across the State of Wyoming. The OP details operating procedures applicable across the State and those applicable to specific districts. Procedures applicable to specific districts are included in Attachments A, B, C, D, and E, District Specific Procedures, which are incorporated herein by this reference. Signatories to this OP agree to the procedures applicable across the State and to those applicable to their specific district.

RECITALS

National Response Framework activities will be accomplished utilizing established dispatch coordination concepts. Situation and damage assessment information will be transmitted through established fire suppression intelligence channels.

Jurisdictional Entities are responsible for all planning documents i.e. land use, resource and fire management plans and decision support documents, for a unit's wildland fire and fuels management program.

Protecting Entities implement the actions documented and directed by the appropriate planning documents and decision support documents for initial and extended attack on wildfire incidents. They provide supervision and support including operational oversight, direction and logistical support to Incident Management Teams.

INTERAGENCY COOPERATION

Interagency Dispatch Centers:

The entities agree to participate in the neighborhood dispatch system. The Entities give authority to the interagency dispatch center to provide the services requested in support of the appropriate center's charter and operating plan. Interagency Dispatch Centers will work together to ensure a positive communication flow and closest available resources will be utilized within capability. For specifics, see Attachment B.

Mobilization Process for State and County Resources:

When resources are mobilized by local 911 dispatch centers for initial attack fires that threaten or are on federal lands, the responding county will notify the respective interagency dispatch center as soon as possible. In circumstances where all private land is involved, federal resource assistance may be requested through the respective interagency dispatch center. Resources that are mobilized using the dispatch ordering system for large fire support will notify the respective interagency dispatch center upon their arrival home.

Standards:

Firefighter Qualifications:

1. Qualifications for local resources utilized for fire suppression within that respective county will meet local standards.
2. Except for County-to-County resources, all resources ordered through an interagency dispatch center will meet NWCG 310-1 standards. Certification for positions is in accordance with the Wyoming Redcard Manual.

Federal Agencies will ensure the following minimum required elements are included in the agreement:

1. Local fire department personnel responding to incidents on Federal lands must:
 - a. Be 18 years of age or older
 - b. Have and use the required personal protective equipment (PPE) found in the Interagency Standards for Fire and Fire Aviation Operations ("Red Book" Ch.13);
 - c. Have a basic level of wildland fire training. The National Wildfire Coordinating Group (NWCG) course S-190, S-130, and L-180 are recommended, both courses can be modified to fit local needs.
2. Pre-identified incident communication protocols will be established and followed (e.g., frequencies plans, points of contact, and interoperable radio hardware).
3. The Incident Command System (ICS) will be used to manage all incidents.

The minimum elements are critical to ensure safe and effective response to wildfires. While on a Federal incident, local fire department leadership is responsible to only deploy personnel that are in compliance with these minimum elements.

PREPAREDNESS

Protection Areas and Boundaries:

If applicable, each entity will provide a Protection Area Map to be included in district specific attachments.

Wyoming State Forestry Division (WSFD):

WSFD shall assume cost of its non-aviation related resources such as overhead, Smokebusters (WHCC), engines, or personnel for a maximum of 24 hours following the initial dispatch to the fire. This shall not be construed as automatic 24-hour dispatch. Any deviation or variation will be at the discretion of the WSFD Fire Duty Officer or their designee. An exception to the 24-hour reciprocal period is the Wyoming State Helitack, provisions are as follows:

1. WSFD may assume the cost of the aircraft daily availability at the discretion of the WSFD Duty Officer unless noted otherwise on a cost share agreement.
2. To promote safe and aggressive initial attack, fires on all jurisdiction that pose an imminent threat to State and/or Private lands: WSFD shall assume all associated costs of the Wyoming State Helitack for a full operational period to be determined by the WSFD Fire Duty Officer. Federal/other out of state personnel assigned to the Helitack may still be billed to the incident during this time.
3. Fires on Federal lands or those fires that pose no imminent threat to State and/or Private land, WSFD may seek reimbursement for costs associated with the Wyoming State Helitack.
4. Rates for the Helicopter and supporting costs shall be distributed upon execution of the contract.

Agreements/MOUs for Fire Suppression Responsibilities:

Agreements/MOUs between entities establishing fire suppression responsibilities will be recognized by this Annual Operating Plan. Entities providing this protection may represent the interest of the jurisdictional entity whose lands are being protected. Unless specified otherwise, the lands protected under Agreement/MOU will be afforded the same conditions/terms as the protecting entity's lands (i.e., mutual aid periods, etc.). All signatories to this Annual Operating Plan will be notified, in writing, of changes or modifications to fire suppression responsibilities by the entity providing protection at the time of an approved Agreement/MOU.

Joint Projects and Project Plans:

On fires that threaten, or involve, the Wildland Urban Interface, the County's Community Wildfire Protection Plan should be referred to for suppression priorities and other information that could prove beneficial to the suppression efforts.

Fire Prevention/Education/Mitigation:

The Entities agree to cooperate in the development and implementation of fire prevention/education/mitigation programs. Entities will collaborate on ways to prevent unwanted wildfires. This program will have an overarching goal of lessening the risk of wildfire impacts to the public and private land and structures especially in the WUI.

Fire Restrictions:

Fire Restrictions and/or Closures will be communicated and coordinated between the Entities to include initiating, implementing, and lifting.

Prescribed Fire (Planned Ignitions) and Fuels Management:

1. Fuels management and prescribed fire projects will be coordinated with the Entities to this agreement.
2. Wildland fires(s) resulting from escaped prescribed fires at the direction or under the supervision of one of the Entities to this agreement shall be the responsibility of that Entity. All suppression costs exclusive of reciprocal periods shall be borne by the responsible Entity. The responsible agency on federal lands shall be the jurisdictional agency. An Entity may take appropriate suppression action when lands under its protection responsibility are involved in or threatened by the fire. Such suppression action may be taken on its own initiative or at the request of the responsible Entity. An Entity may take appropriate suppression action, at the request of the responsible Entity, when lands under its protection are not involved in or threatened by the fire. The responsible Entity shall reimburse the other Entity for all suppression costs incurred in accordance with this clause.
3. Escaped prescribed fires ignited by individual(s) not party to this agreement will be considered as wildland fires requiring suppression action under the terms and conditions of this agreement.
4. Entities agree to share and reimburse, according to the rates established in the Wyoming Wildland Fire Resource Mobilization Guide for resources used on prescribed fire projects, based on availability, qualifications, and need. For Forest Service prescribed fire projects, a separate agreement will be executed.

Smoke Management:

Within their authorities, the Parties to this Agreement agree to cooperate in smoke management efforts. The Wyoming Department of Environmental Quality, Air Quality Division, Smoke Management Program has access to the Wyoming State Forestry Division Wildfire Reporting Program and will assist in the coordination of smoke management within the state in support of the Wyoming Air Quality Standards & Regulations Chapter 10, Section 4, Smoke Management Requirements.

OPERATIONS

Fire Notifications and Reporting:

All Wildland Incidents and initial attack action will be reported through the appropriate Interagency Dispatch Center before engaging and upon arrival to the incident. The Interagency Dispatch will then notify the protecting entity of the wildland incident within or near their boundaries.

Initial Attack:

If one or more Entities to this agreement arrive on initial attack, the first Entity on the scene will assume command or what is mutually agreed upon between those entities first arriving at the incident. Once protection responsibilities are established, the protecting Entity will either assume command or request a supporting Entity to do so.

Independent Action on Lands Protected by Another Entity:

Nothing herein shall prohibit any Entity, on its own initiative, with notification and coordination with the protecting Entity and without requesting reimbursement from going upon lands known to be protected by another Entity to engage in suppression of wildland fires, when such fires are a threat to lands within that Entity's protection responsibility.

Special Management Considerations:

Heavy Equipment Use

Heavy equipment use provisions will be defined in County attachments as guidelines differ across the State.

Use of Aerial Retardant on Federal Lands

Pursuant to agency policy, each federal management unit has identified areas where aerial retardant may not be applied, unless a decision by the Incident Commander determines that

human life or safety is threatened and retardant will mitigate that threat. These areas are identified on a map for each unit and may include areas within 300 feet of waterways (streams and lakes); where threatened, endangered, or sensitive species habitat occurs that could be impacted by retardant; and/or where cultural resources exist that have been identified for exclusion from retardant. If retardant is applied in these areas, the agency administrator must be notified for reporting requirements to be met.

Special Lands Designations

On Wilderness lands (Congressional Designated, Wilderness Study Areas, and Recommended/Proposed/Potential Wilderness), and Areas of Critical Concerns (BLM) special tactics must be used. No motorized equipment may be used without proper approval including chainsaws, portable pumps and helicopter landings. Minimum Impact Suppression Tactics (MIST) will be utilized in order to minimize adverse impacts of management actions. Fire management resources will be advised of this and briefed on MIST. Sage Grouse – General Habitat, Priority Habitat and Sagebrush Focal Areas are identified as high value areas to protect from disturbances from wildfires. Aggressive actions and coordination will be taken on all wildfire incidents with these identified areas.

Decision Process:

Escaped Fires or Fires Threatening Other Jurisdictions

Field personnel involved in fire suppression action will contact the other protecting Entities as soon as possible after a fire escapes or threatens to escape initial attack near intermingled ownership (defined as different ownership within 1 mile of the fire or it is anticipated that other ownerships may be involved) and a Unit Administrator Group (see Glossary) will be assembled by the initial attack Entity to represent the jurisdictional Entities involved with that fire. For a list of the designated representatives for creating a unit administrator group, see Directory E-1.

1. Guidelines for assembling the Unit Administrator Group:

- a. A wildland fire that escapes initial attack or threatens other jurisdiction .
- b. The fire is to be determined at a Type III or higher complexity level.
- c. Containment is not anticipated before the next burning period.

2. The Unit Administrator Group's functions is:

- a. To participate in development and approval of wildfire decision documents for managing a fire incident.
- b. To recommend to the appropriate Line Officer(s) the level at which the incident should be managed.
- c. To prepare a Delegation of Authority for Line Officer(s) signature.
- d. To act as the representative for the respective Entity.
- e. To develop incident management objectives and agree on management actions

needed.

- f. To initiate a written cost share agreement for Line Officer(s) approval with signatures prior to the end of the fire. (See Example in Wyoming Wildland Fire Resource Mobilization Guide)
- g. To agree to all expenditures whenever the suppression plan must be modified including mop-up, rehab and patrol after demobilization of the fire.
 - 1) The Incident Commander/Unified Command will provide the Unit Administrator Group with an estimated fire cost daily.
 - 2) The Incident Commander/Unified Command and the Unit Administrator Group will reach mutual agreement when the fire situation is such that the group can be demobilized.

Delegation of Authority:

It is recognized that initial attack and rapidly expanding incidents often involve multi-jurisdictions. Determining the appropriate jurisdiction and obtaining delegations of authority in an efficient and effective manner is often difficult and may be further hampered by the remoteness of incidents in relation to Entities having authority and jurisdictional responsibility.

The Entities which are party to the Annual Operating Plan agree that initial attack delegation will be valid until a qualified incident commander from the entity having jurisdiction is on scene, or a revised or updated incident specific delegation of authority is signed. The Incident Commander being delegated authority should be confirmed through the dispatch log for that position from the Interagency Dispatch Center. Incidents that have been declared as exceeding initial attack and transition to extended attack should have an incident specific delegation of authority in place as soon as possible.

Preservation of Evidence/Fire Cause Determination:

Each Entity is responsible for investigating and taking appropriate law enforcement action for all fires on lands under their jurisdiction. The initial attack Incident Commander will take all responsible precautions to preserve evidence found.

Entities shall render mutual assistance in investigation and law enforcement activities and in court prosecutions to the fullest extent possible. Each Entity shall be responsible for fire-related law enforcement activities on wildfires that originate on their respective lands. To the extent permitted by Federal and State law, the protecting Entity will provide investigation files relative to the fire to the Jurisdictional Entity for legal action and/or prosecution.

REIMBURSEMENT OF INTERAGENCY FIRE RESOURCES

Cost Share Agreement:

In situations where an incident encompasses land under the protection or jurisdictional responsibility of more than one Entity, a cost share agreement will be initiated prior to fire being declared controlled and negotiated on a case-by-case basis

Where agreement cannot be reached regarding incident strategies, tactics or costs, the discussion will be elevated to the next level of Entity administrators representing each Entity.

For incidents that go beyond the reciprocal period (mutual aid) it should be noted in the Cost Share Agreement that reciprocal (mutual aid) period will not apply; all costs will begin at the start of the incident, unless otherwise specified by an individual district attachment. (i.e. For the sake of this cost share agreement, all costs will be collected from the beginning of the incident and no mutual aid period will apply.)

Private Lands:

Costs associated with the suppression of wildland fire on private land or structure protection of private structures against an active threat from an ongoing wildland fire are the responsibility of the protecting entity that has jurisdiction for that private property. These costs may be considered for inclusion in the cost share agreement for a wildland fire incident.

Federal Lands w/Private Structures:

The structure protection of privately owned structures on federal lands against an active threat from an ongoing wildland fire are the responsibility of the protecting Entity that has jurisdiction for the private structures. Structure protection responsibilities of the protecting Entity include actions taken directly on the structure or the immediate area surrounding structure. The federal agencies will be responsible for cost associated with keeping the fire from reaching the structures. These costs may be considered for inclusion in the cost share agreement for a wildland fire incident.

Entities that elect not to suppress an ignition with intent to manage the fire for resource benefits are responsible for the cost associated with that fire. This includes the cost of protecting private land, structures and infrastructure, as well as other State and Federal managed lands, unless negotiated with the other affected jurisdiction.

For incidents that have an initial response objective of protection (suppression) and it is later determined that there is also an opportunity to effectively manage a portion of the incident for resource benefit objectives, Entities should follow the standard cost share principles and many need to develop additional cost share agreements based on changes in the situation and objectives.

The protecting Entity is responsible for developing structure protection plans and coordinating with the incident management team to implement the plan. This could include the -protecting Entity preparing the plan themselves or working with the incident management team to obtain resources to prepare and implement the plan. The local Entity is responsible for determining any actions to be applied directly to a structure such as wrapping; applying foam, fire gels, or other retardants; sprinkler on roofs, etc.

State Trust Lands w/Private Structures:

The structure protection of privately owned structures on state trust lands against an active threat from an ongoing wildland fire are the responsibility of the protecting Entity that has jurisdiction for the private structures. Structure protection responsibilities of the protecting Entity include actions taken directly on the structure of the immediate area surrounding structure. Wyoming State Forestry Division will be responsible for costs associated with keeping the fire from reaching the structures. These costs may be considered for inclusion in the cost share agreement for a wildland fire incident.

Training:

The Entities party to this agreement will coordinate wildland fire training locally, within the county, state and the Geographic Area.

Communication Systems:

Communication frequencies to be used for initial attack are included in Attachment B-5.

All Entities will utilize the current year Standard Air to Ground naming convention adopted by the National Interagency Incident Communication Division.

All Entities to this agreement give permission for the use of their respective entities radio frequencies for emergency use only including WyoLink.

Aviation Operations:

1. Aerial resources may be used with prior approval of the jurisdictional Entity unless otherwise specified under "Special Management Considerations" of this plan.
2. Aerial resources will be paid for by the requesting Entity if prior approval has not been obtained.
3. Air to air and air to ground frequencies with designated ground contacts need to be established by dispatch.
4. Aviation use will be requested through the appropriate interagency dispatch center.

Billing Procedures:

A. Federal Agencies will not bill each other for fire suppression. See Section C for State and County billings.

B. Out of State:

1. When non-federal resources respond to incidents outside the State of Wyoming, bill should be submitted to WSFD Headquarters.
2. When non-federal resources respond outside the State of Wyoming to incidents that are under USDA Forest Service Jurisdiction or where the USDA Forest Service is the Lead Agency for Payment, Wyoming State Forestry Division will audit, may reimburse, and forward all completed bills for services to the USDA Forest Service at the address listed below in Section C.
3. When non-federal resources respond outside the State of Wyoming to incidents that are under US DOI Jurisdiction or where the US DOI is the Lead Agency for Payment, Wyoming State Forestry Division will audit, may reimburse, and forward all completed bills for services to the appropriate DOI Agency at the address listed below in Section C.
4. Payment Due Dates: All bills will have a payment due date 30 days after the date of issuance. If payment cannot be made before the 30 days expire, then a 30-day extension, with oral or written justification, may be requested. Voucher difference statements will accompany any payment made that is different than the amount billed.
5. Disputed Billings: Written notice that a bill is contested will be mailed to the billing agency within 30 days of issuance of the final bill, and will fully explain the area of dispute. Contested items will be resolved within the designated waiver period.
6. Fire Cost Meeting: The Entities that are party to the cost share agreement will gather their suppression costs and meet to discuss these costs. Contested items will be resolved by signature parties if consensus cannot be reached, these costs will be elevated to the next higher level of management for resolution. After costs for fire suppression have been agreed upon then a bill will be issued to the owing party.
7. All supporting Entities are subject to examination and audit for 3 years after final payment.
8. In order to receive EFT payments, Wyoming counties shall register in SAM, www.sam.gov, and follow the instructions on line.

C. In-State:

1. When State or County resources are used and the fire management activity is within the State of Wyoming, the State or County will bill either: WSFD or the protecting host unit.
2. When the State is the jurisdictional Agency, the Federal Agencies will submit their individual billings to the State and the State will reimburse each individual Agency. When the County is the jurisdictional entity, the Federal Agencies may submit their individual billings to the County and the County will reimburse each individual Agency.
3. Payment for Wyoming State/County resources will be made direct to the appropriate State/County identified in the billing. The State will coordinate billing questions or disputes with the appropriate County.

D. Billing Addresses: All bills for services provided to the Wyoming State Forestry Division or to Counties will be submitted to addresses identified in the Appropriate Annual Operating Plans or as listed below:

All bills for services provided to Wyoming State Forestry Division will be submitted to:

Wyoming State Forestry Division
Headquarters Office
5500 Bishop Blvd.
Cheyenne, WY 82002

All bills for services provided to a County in Wyoming:

Refer to the Wyoming Wildland Fire Resource Mobilization Guide on the following website for the County are you to bill: <http://wsfd.wyo.gov/fire-management/fire-business>

All bills for services provided to the Bureau of Reclamation will be mailed to:

Deputy Area Manager
Bureau of Reclamation, Dakotas Area Office
P.O. Box 1017
Bismarck, ND 58502

All bills for services provided to the Rocky Mountain Region – Forest Service will be mailed to:

USDA Forest Service, Rocky Mountain Region

Attn: Incident Business – Regional Budget Office
1617 Cole Boulevard, Building 17
Lakewood, CO 80401-3305

All bills for services provided to the Intermountain Region – Forest Service will be mailed to:

**USDA Forest Service, Intermountain Region
Attn: Incident Business – Regional Budget Office
324 25th Street
Ogden, UT 84401**

All bills for services provided out of state to the DOI Department of Interior/BLM will be mailed to:

**BLM Wyoming State office
Attn: Fire Program Analyst
PO Box 1828
5353 Yellowstone Road
Cheyenne, WY 82009**

All bills for services provided in state to the DOI Department of Interior/BLM will be mailed to appropriate BLM WY District:

**BLM High Plains District Attention:
Fire Management Officer 2987
Prospector Drive
Casper, WY 82604**

**BLM Wind River/Bighorn Basin District
Attention: Fire Business Specialist
101 S. 23rd Street
PO Box 119
Worland, WY 82401**

**BLM High Desert District
Attention: Fire Business Specialist
280 Highway 191 North
Rock Springs, WY 82901**

All bills for services provided to the DOI Department of Interior/NPS Intermountain Region will be mailed to:

**NPS – Intermountain Region
Attn: Fire Budget Analyst
12795 W. Alameda Parkway
Lakewood, CO 80228**

All bills for services provided to the DOI Department of Interior/BIA will be mailed to:

Bureau of Indian Affairs – Rocky Mountain Region
Branch of Fire & Forestry
Attn: Budget Analyst
2021 4th Avenue North
Billings, MT 59101

All bills for services provided to the DOI Department of Interior/FWS will be mailed to: US

Fish & Wildlife Service

Mountain Prairie Region 6
134 Union Blvd, Suite 300
Lakewood, CO 80226

- E. The non-federal Entities of Wyoming are cooperators, not contractors. Reference the Wyoming Wildland Fire Resource Mobilization Guide (Mini Mob Guide) for Wyoming Firefighters Pay Plan and Equipment Use Rates. Emergency Equipment Rental Agreements will only be executed for equipment not listed above .
- F. The Jurisdictional Entity is not obligated to reimburse the Supporting Entity for costs incurred during the Reciprocal (Mutual Aid) period unless otherwise specified in a cost share agreement.
- G. Fire Numbers: Entities will share their respective individual fire numbers for cross referencing purposes.
- H. Billing Estimates/Time Frames: On fires where costs are incurred pursuant to the terms of this agreement, the billing Entity shall submit a bill or estimate for reimbursement as soon as possible, but not later than 120 days after the fire is controlled. If the total cost is not known at the time of initial billing, a partial bill, so identified, may be submitted. A final bill, so identified, will be issued within 270 days after control of the fire.

Billing deadlines set forth herein are intended merely to encourage prompt billing, and failure to meet billing deadlines shall not be construed as a release or waiver of claims for reimbursement against the other Entity.

For obligation purposes, the Federal Entities will submit unpaid obligatory figures to the non-federal Entities by May 15. The non-federal Entities will submit unpaid obligatory figures to the appropriate federal Entity by September 15 for the previous federal fiscal year.

After the final billing has been sent and additional costs are identified, a supplemental billing may be issued if agreeable to applicable Entities.

- I. Billing Content: A separate bill will be submitted for each fire. Bills or State Form WSFD-41, Exhibit B Invoice Form for Wyoming Firefighters and Equipment (WSFD-41) will be summarized by major categories. Bills or WSFD-41 will include incident name, location, accounting code, jurisdictional unit, incident number, appropriate resource order number, inclusive dates, and will be supported by originals or copies of the following:

Fire Time Reports, OF-288

Summary of travel charges

Equipment Use Invoice and Daily Shift Tickets

Credit card bill, list of purchases

Cost Share Agreement, when applicable

Copy of Resource Order

For out of state resources used on state or private land incidents, their bills will be sent to the address below. Wyoming State Forestry Division will either make payment or forward the bill to the appropriate Entity for payment.

Shielah Esterholdt

Wyoming State Forestry Division 5500

Bishop Blvd.

Cheyenne, WY 82002

Cost Recovery:

The Authorized Representatives of affected Entities will attempt to reach mutual agreement, as soon as possible after a fire start, on the strategy that will be used to recover suppression costs and damages from the individuals liable for such costs and damages. Such strategy may alter interagency billing procedures, timing and content as otherwise provided in this Agreement.

Any Entity may independently pursue civil actions against individuals to recover suppression costs and damages.

GENERAL PROVISIONS

Personnel Policy:

Employees of the Entities to this Agreement shall be subject to the personnel rules, law and regulations of their respective Entity, unless they are employed temporarily by another Entity to this Agreement and the authority under which such temporary employment is authorized provides that such employees shall be subject to the employing Entity's personnel laws and regulations.

Modifications:

Modifications within the scope of this Operating Plan shall be made by mutual consent of the Entities, by the issuance of a written modification request with a minimum of 20 day notice, signed and dated by all Entities, prior to any changes being performed. No Entity is obligated to fund any changes not properly approved in advance.

Annual Review:

This Annual Operating Plan is reviewed annually. Wyoming State Forestry Division will be the lead Entity responsible for preparing the plan.

Duration of Agreement:

This Annual Operating Plan remains in effect until superseded. This plan becomes effective on the date signed by each Entity. It may be terminated upon 20 days written notice to all Entities.

Sovereign Immunity:

The parties do not waive sovereign immunity by entering into this Agreement and specifically retain immunity and all defenses available to them pursuant to State and Federal law.

Attachment B – District 2

This Plan is between the USDI Bureau of Land Management (BLM) High Plains District, High Desert District & Wind River/Bighorn Basin District, USDI Bureau of Reclamation (BOR), USDA Forest Service (USFS) Medicine Bow/Routt National Forests and Thunder Basin National Grassland, USDI US Fish & Wildlife Service (USFWS), National Park Service (NPS), Wyoming State Forestry Division (WSFD), Converse County, Goshen County, Natrona County, Natrona County Fire Protection District and Casper Mountain Fire District, City of Casper, Town of Bar Nunn, Town of Evansville, Town of Mills, the Wyoming Military Department-Camp Guernsey, Albany County, Albany County Fire District #1, Town of Rock River, City of Laramie, Carbon County, City of Rawlins, Laramie County Fire District #1, Laramie County Fire Authority, Laramie County Fire District #3, Laramie County Fire District #4, Laramie County Fire District #5, Laramie County Fire District #6, Laramie County Fire District #9, Laramie County Fire District #10, Laramie County, Platte County, Platte County Fire District 1F, Platte County District 2F, Guernsey Rural Fire District, Chugwater Fire Protection District, Antelope Gap Rural Fire District and Hartville Fire Department.

Forest Service County Grants and Agreements

Albany, Carbon, Converse, Natrona and Platte County – (22-FO-11020600-011).

Interagency Dispatch Centers:

1. The Entities agree to participate in the neighborhood dispatch system. The Entities give authority to the dispatch center to provide the services required in support of the appropriate center's charter and operating plan. For specifics, see the dispatch center plans.
2. For fires on or near State, BLM, USFS, USFWS & NPS ownership, Casper Interagency Dispatch Center will be used for the dispatch contact. For fires located in southwestern Natrona County and northwestern Carbon County that fall under BLM Wind River/Bighorn Basin District jurisdiction Cody Interagency Dispatch Center will be notified. Fire dispatch on private lands and within the incorporated boundaries of cities and towns will be conducted utilizing protocols and procedures adopted by the local Jurisdictional Entity.

PREPAREDNESS

Description of reciprocal fire protection zone:

1. Within the reciprocal fire protection zone, each Entity shall assume its own full

cost of expenditures until the reciprocal period described below expires, following the initial report of the fire to the jurisdictional Entity, with the exception of WSFD as described in the Sub Geographical Agreement. Costs incurred after the reciprocal fire protection period ends will be reimbursed by the protecting Entity. The protecting Entity will be determined as soon as possible. All fires will be reported to the protecting Entity.

2. All lands party to this agreement are considered a reciprocal fire protection zone, with the exception of Wyoming State Park lands, as well as human caused fires resulting from training activities occurring on Wyoming Military Department lands – Camp Guernsey. All costs associated with fire suppression, containment and control on Wyoming Military Department – Camp Guernsey lands are to be paid by the Wyoming Military Department.
3. WY-BLM became the protecting agency for all BOR lands within the state of Wyoming. As such, BOR lands shall be protected under the same terms as BLM lands; that is, mutual aid periods, billable responses, and cost share processes shall be the same for BOR as BLM. Both BLM and BOR will be signatory to this AOP. All bills for fires on BOR lands shall be sent to BLM for payment.
4. Following the initial report of the fire to the jurisdictional Entity, and within the reciprocal fire protection zones, each Entity, with the exception of WSFD as described in the Sub Geographical Agreement, shall assume its own full cost of expenditures for the first operational period (midnight) following the initial report of the fires to the jurisdictional Entity.
5. Costs incurred after the reciprocal fire protection period ends will be reimbursed by the protecting Entity. The protecting Entity will be determined as soon as possible. All fires will be reported to the protecting Entity.

For all wildfires on State Parks administered land, bills should go to the Agency with surface jurisdiction.

6. In all counties with BOR lands entities will notify the BOR Agency Administrator as listed in Attachment B-2 “Call List” as soon as possible when Initial Attack is not sufficient to control a fire.
7. Reciprocal protection is not construed as an automatic commitment for the maximum reciprocal fire protection period for each county listed above. Therefore, priority will be given to the release of a supporting Entity when it is mutually agreed upon by the initial attack forces that the fire situation is such that the protecting Entity’s forces on the scene can adequately control the incident. Furthermore, within its capabilities, the protecting Entity will render support to the supporting Entity to include but not limited to food, water, and additional forces to expedite release of the supporting Entity in advance of the

maximum reciprocal fire protection period for each county, as listed above.

8. For incidents that go beyond the reciprocal period (mutual aid) it should be noted in the Cost Share Agreement that reciprocal (mutual aid) period will not apply; all costs will begin at the start of the incident. (i.e., For the sake of the agreement, all costs will be collected from the beginning of the incident and no mutual aid period will apply.)

Reimbursable Fire Protection Services:

1. All counties, with the exception of Wyoming State Park lands are considered as a reimbursable protection zone after the first operational period (midnight) of reciprocal protection. All Wyoming State Park lands are fully reimbursable upon the initial report of the fire.
2. All counties party to this agreement are considered as a reimbursable fire protection zone after the end of first operational period (midnight) of reciprocal protection.
3. For any fires on State Park Lands located in all counties party to this agreement, State Parks administrative office will be contacted as soon as possible. State Parks contact information is listed in Attachment B-2 "Call List" of this AOP.

OPERATIONS

Special Management Considerations:

Federal Partners Party to this Agreement

All unplanned fires on federal land require a response and a decision. This is best communicated with clear objectives and an "incident strategy". The incident strategy is based on the following criteria:

- Should lead to meeting the objectives
- Risk to firefighters (Life First Concepts/Risk Management – probability and the consequences of fire impacting values at risk vs. the risk to firefighters put in place to mitigate the risk of fire impacting values.)
- Fuels, Weather and Topography influencing the fire and the anticipated spread of the fire
- Values truly at Risk: Communities, Infrastructure, Watersheds, Social, Ecological, Cultural, etc.
- Partner agencies and their objectives (if the fire is or is expected to be multi-jurisdictional)
- Cost of meeting objectives
- Smoke Management: Coordination with the States and monitoring
- Desired conditions (outlined in the Land Management Plan Objectives or other

- documents)
- Resource Availability
- Fire modelling Tools
- Seasonality – duration of fire/change in conditions

Agency Administrators and Fire Managers assess the criteria above and then develop a strategy to successfully manage the fire, and meet objectives. The strategy may use natural barriers, changes in weather, fuel changes or rely heavily on the efforts of firefighters and aircraft. It could be a combination of all these elements (and usually is).

Fire Operations Guidance in Bark Beetle Killed Stands – USFS/R2

Due to altered fuel conditions, personnel operating within the bark beetle environment should be aware of the imminent danger presented by dead and dying trees, falling at an increasing rate across a broad forested landscape.

Purpose and Intent

Fire Operations Guidance is mindful of Foundational Fire Suppression Doctrine in the Forest Service. The first principle is: No resource or facility is worth the loss of human life; however, the wildland fire suppression environment is complex and possesses inherent hazards that can---even with reasonable mitigation---result in harm to firefighters engaged in fire suppression operations. In recognition of this fact, we are committed to the aggressive management of risk.

This guidance provides a collection of potential hazards unique to bark beetle forests, including appropriate practices that have evolved over time within the wildland fire service. It does not provide absolute solutions to the unlimited number of situations that could occur.

This guidance within bark beetle stands was provided with the intention of being used in conjunction with existing fire risk management documents. No further protocols or rules are necessary to make informed risk management decisions for fire operations in bark beetle stands.

The following hazard guidance is provided:

Tactical Hazards

- Withdrawal and/or reassessment should be considered if any of the following are present:
 - o Thunderstorms in the immediate vicinity.
 - o Wind speeds are strong enough that canopy movement is observed (consider that wind speeds at eye level in sheltered areas may not indicate the much greater winds aloft).

- o Reliable communication cannot be established with the appropriate Dispatch Center and remain in place 24/7 when resources are engaged.

- Due to limited ingress or egress in remote areas or in terrain without vantage points, consider using an aerial platform for risk assessment and size up.

Potential Fire Behavior Hazards

- Due to increased potential of extreme fire behavior, when ERCs approach the 90th percentile, air reconnaissance should be on scene within 1 hour of detection.
- The following situations, though possible on any wildfire, may be accentuated in bark beetle stands:
 - o Accelerated transition to crown fire (when needles are present)
 - o Increased rate of spread (surface fire)
 - o Resistance to control (heavy dead and down)
 - o Frequent spotting, including long range (>.25 miles)

Special Lands Designations:

If a wildfire is responded to that occurs on or near lands with special designations (such as Congressionally designated Wilderness, Wilderness Study Areas (BLM), Recommended/Proposed/Potential Wilderness, Areas of Critical Concerns (BLM) or Sage Grouse Habitat), the jurisdictional agency will be contacted and coordinated with to ensure allowable tactics are used. Agencies with lands that have these special designations will provide the corresponding layer to dispatch, so that responding resources can be made aware of the special designation.

Other Considerations:

On Mortenson and Hutton Lake NWR's, all use of fire retardant or other suppression chemicals will require prior approval from the Project Leader or alternate due to Threatened and Endangered species concerns with the Wyoming Toad. If there is any discharge of fire suppression chemicals into the water sources for these two locations, then the Project Leader or alternate will be notified immediately.

Entirety of Agreement:

This Agreement consisting of 58 pages, the current Wyoming Wildland Fire Resource Mobilization Guide, and interagency dispatch operating plans represents the entire and integrated Agreement between the Entities.

DISTRICT 2 AOP DIRECTORY

Listed below are the Entity positions in order of authority for decisions within each Entity. For the purpose of notification, request of assistance, approval of retardant or equipment use, and for representatives for the Unit Administrator Group use the call list which is arranged according to the order each Entity wants their representatives called. Each Entity representative will be responsible to follow the proper procedure for their Entity. **Federal firefighter ICS can request retardant on Federal lands without approval.**

Bureau of Land Management Lands - District Fire Management Officer or their designated representative.

State Trust Lands - Assistant State Forester - Fire Management Officer/District Forester/or their designated representative.

National Forest Service Lands - District Ranger/Forest Fire Management Officer or their designated representative.

National Park Service Lands - Fire Management Officer/Superintendent or their designated representative.

U.S. Fish & Wildlife Service Lands - Manager or their designated representative.

Bureau of Reclamation Lands – BOR Agency Administrator or 24 hour control center, unless BOR parcel is administered by a State Park.

State Park Lands – Agency Administrator or their designated representative.

Private Lands - County Fire Warden, Assistant Fire Warden, County Commissioner/ District Fire Board/ or their designated representative.

City of Casper Lands – City Manager or their designated representative

Camp Guernsey, Wyoming Military Department Lands – Camp Guernsey Fire Chief / Fire Officer/ Base Operations Manager or their designated representative

CALL LIST

CASPER FIRE DISPATCH

(Also Smokebusters)

Phone Number

1-800-295-9952

Center Manager - Bill Roach

O: 307-233-1145

C: 435-590-8358

Assistant Center Manager - Eddie Hutton

O: 307-233-1147

Assistant Center Manager - Vacant

O: 307-233-1146

C:

Aviation - Kyle Adams

O: 307-223-1155

BUREAU OF LAND MANAGEMENT

HIGH PLAINS DISTRICT

Fire Management Officer - Craig Short

O: 307-261-7698

C: 307-258-0292

Assistant Fire Management Officer - Curtis Rasmuson

O: 307-684-1100

C: 307-763-0474

Assistant Fire Management Officer - Casey Cheesbrough

O: 307-261-7586

C: 307-399-2689

Casper Field Manager - Ben Begalke

O: 307-261-7776

C: 307-262-9974

Associate District Manager - Amelia Savage

O: 307-261-7559

C: 307-480-8665

District Manager - Kevin Christensen

O: 307-261-7777

C: 307-277-1873

HIGH DESERT DISTRICT

Fire Management Officer - Frank Keeler

O: 307-352-0282

C: 307-350-6994

Assistant Fire Management Officer - Mike Wengert

O: 307-352-0217

C: 307-231-6054

Assistant Fire Management Officer - Mark Randall

C: 307-231-9092

Rawlins Field Manager - Tim Novotny

O: 307-328-4209

C: 307-274-7239

District Manager - Jason C. Gay

O: 307-352-0202

C: 307-389-1100

CODY FIRE DISPATCH

1-800-295-9954

Center Manager - Vacant

O: 307-578-5740

Assistant Center Manager - Tyler Kuhn

O: 307-578-5740

WIND RIVER/BIGHORN BASIN DISTRICT

Fire Management Officer - Brian Cresto

O: 307-578-5951

C: 307-899-1221

Assistant Fire Management Officer - Fred Tucker

O: 307-578-5923

C: 307-272-0155

Assistant Fire Management Officer - Rance Neighbors

O: 307-347-5148

C: 307-431-9879

Worland Field Manager - Mike Phillips

O: 307-347-5297

C: 307-431-9881

District Manager - Matt Marsh

O: 307-347-5243

C: 307-431-1113

MEDICINE BOW NATIONAL FOREST

SUPERVISOR'S OFFICE

Forest Fire Manager Officer - Jay Miller

O: 307-745-2415

C: 307-399-1422

H: 307-745-8400

Deputy Fire Staff Officer - Jeramy Dietz

O: 307-745-2358

C: 307- 760-6165

Forest Supervisor - Russell Bacon

O: 307-745-2400

C: 970-596-0886

Deputy Forest Supervisor - Leslie Crossland

O: 307-745-2440

C: 307-286-4415

NORTH ZONE - DOUGLAS DISTRICT

Fire Management Officer - Klayton "Shay" Rogge

O: 307-358-7119

C: 307-359-8963

Assistant Fire Management Officer - Operations - Chris Rankin O: 307-358-7120
C: 307-359-1997

Assitant Fire Management Officer - Fuels - Nick Collard O: 307-358-7118
C: 970-688-0079

District Ranger - Rob Robertson O: 307-358-7101
C: 307-340-1495

Black Mountain Lookout Tower O: 307-351-2502

CENTRAL ZONE - LARAMIE & BRUSH CREEK/HAYDEN RANGER DISTRICTS

Fire Management Officer - Jeremy McMahon O: 307-745-2373
C: 530-410-3930

Assistant Fire Management Officer - Blake Creagan O: 307-326-2517
C: 307- 250-8687

Laramie District Ranger - Frank Romero O: 307-745-2337
C: 307-760-8820

Brush Creek/Hayden Ranger District Ranger - Jason Armbruster O: 307-326-2501
C: 970-462-8456

UNITED STATES FISH AND WILDLIFE SERVICE

MORTENSON, HUTTON LAKE, AND BAMFORTH NATIONAL WILDLIFE REFUGE SERVICES

Refuge Manager - Keeley Lopez O: 970-723-8202
Arapahoe NWR Complex C: 509-412-2028

Rocky Basin FMZ FMO - Erik Haberstick O: 435-734-6421
C: 435-881-5715

Rocky Basin Fire Tech - Andy Buyers C: 435-230-3598

BUREAU OF RECLAMATION

Area Manager - Lyle Myler (Acting) O: 307-261-5628

Resources Mgt. Division Chief - Mahonri Williams O: 307-261-5624
C: 307-253-0600

Chief of Land Management - Tim Lingle O: 307-261-5675

Natural Resource Specialist - Jay Dallman

O: 307-261-5608

24 Hour Control Center

O: 307-261-5670

NATIONAL PARK SERVICE

FORT LARAMIE NATIONAL HISTORIC SITE

Superintendent - Mark Davison

O: 307-837-2221 Ext. 3004

WYOMING MILITARY DEPARTMENT

CAMP GUERNSEY

Camp Guernsey Fire Dept. Fire Chief - Chad E. Brush - Acting

O: 307-836-7717

C: 435-315-3902

Camp Guernsey Fire Dept. Assistant Fire Chief - Vacant

O:

C:

Base Operations Manager - Robby Cain

O: 307-836-7834

C: 307-331-8190

WYOMING STATE FORESTRY DIVISION

District Forester - Bryan Anderson

O: 307-234-6116

C: 307-631-8347

Assistant District Forester - Travis Pardue

C: 307-286-6945

Fire Management Officer - Jerod DeLay

O: 307-777-3368

C: 307-286-6315

Assistant Fire Management Officer - Chris Fallbeck

O: 307-777-8017

C: 307-631-2594

Fire Operations Specialist - Aviation - Chris Norquest

C: 307-631-8271

Fire Duty Officer Contact Number

307-777-5566

PRIVATE LANDS

ALBANY COUNTY

Laramie Dispatch

O: 307-721-2526

Fire Warden - Chad Dinges

O: 307-721-1885

C: 307-760-3641

Assistant County Fire Warden - Robert Clark Jr. C: 307-331-5815

Albany County Commissioners

Commissioner - Pete Gosar C: 307-760-3219

Chariman - Sue Ibarra C: 307-760-4387

Commissioner - Herber Richardson O: 307-760-0448

Albany County Clerk O: 307-721-2541

Albany County Fire District #1

Board President - Luke Hawkins C: 307-760-8802

Board Secretary - Matt Borwhant C: 307-399-4960

Board Treasurer - Brett Wadsworth C: 307-399-4192

GARRETT FIRE ZONE

Zone Warden - Celia Corson C: 307-223-5354

LARAMIE PEAK FIRE ZONE

Zone Warden: Bob Shoemaker C: 307-331-3691

Assistant Zone Warden: Jim Johnson C: 307-640-7138

LARAMIE FIRE DEPARTMENT

Fire Chief - Dan Johnson O: 307-721-5302
C: 307-760-6129

Wildland Coordinator - Justin Cowger O: 307-721-5332
C: 307-760-7275

On Duty Shift Commander C: 307-721-5332

ROCK RIVER FIRE DEPARTMENT

Fire Chief - Ricky Stricklin C: 307-460-8441

Assistant Fire Chief - John Chase C: 307-343-2005

SYBILLE VOLUNTEER FIRE DEPARTMENT

Fire Chief - John Wilson C: 307-331-5267

H: 307-322-2863

Assistant Fire Chief - Sean Kennedy

C: 307-331-3369

H: 307-322-3810

CARBON COUNTY

County Fire Warden - John Rutherford

C:

H:

Deputy County Fire Warden - ?

C:

Fire Station (Non-Emergency)

O: 307-328-2721

Carbon County Sheriff's Department

O: 307-324-2776

CONVERSE COUNTY

County Fire Warden - Tom Reed

O: 307-358-2118

C: 307-351-7694

H: 307-351-2696

Deputy County Fire Warden - Travis Wills

C: 307-351-0206

H: 307-358-3535

Chairman County Commissioners - Rob Short

O: 307-262-6977

H: 307-436-2421

Converse County Sheriff's Office

O: 307-358-4700

Zone 1: Zone Warden - Monte Reed

C: 307-351-0537

Zone 2: Zone Warden - Mark Horr

C: 307-351-4414

H: 307-351-1122

Zone 3: Zone Warden - Steve Wintermote

C: 307-359-0623

H: 307-358-4879

Zone 4: Zone Warden - Shawn Daly

H: 307-358-6007

C: 307-351-6007

Zone 5: Zone Warden - Thad Isenberger

H: 307-351-1093

Zone 6: Zone Warden - Rick Grant

C: 307-262-6977

H: 307-436-2421

Zone 7: Glenrock Fire Chief - Rob Brewer

Fire Hall: 307-436-9745

C: 307-277-9619

President - Hershel Wickett

H: 307-436-2647

Zone 8: Zone Warden - Keith Moore H: 307-358-3716

Zone 9: Zone Warden - Cowboy Hildebrand C: 307-359-1043

GOSHEN COUNTY

County Fire Warden- Bill Law C: 307-532-0305
O: 307-532-7952
H: 307-532-2647

Deputy Fire Warden - Chuck Kenyon C: 307-532-1748

Chairman County Comissioners - John Ellis O: 307-330-4623

LARAMIE COUNTY

County Fire Warden - Matt Butler C: 307-274-1405
O: 307-633-4335

Deputy Fire Warden - Jeanine West C: 307-274-5800
O: 307-633-4333

Laramie County Sheriff's Office O: 307-637-6410

NATRONA COUNTY

County Fire Warden - Mike Haigler C: 307-258-2950
O: 307-235-9311

Deputy County Fire Warden - Travis Cozine C: 307-262-6530
O: 307-235-9311

Chairman County Commissioners - Paul Bertoglio C: 307-262-2395

NATRONA COUNTY FIRE PROTECTION DISTRICT

Fire Chief - Brian Oliver C: 307-258-4384
O: 307-234-8826

Chairman - Dean Jackett C: 307-262-2272

Vice Chairman - George Tillman H: 307-315-7211

Secretary/Treasurer - John Bently C: 307-258-5873
H: 307-234-3930

BAR NUNN FIRE DEPARTMENT

Fire Chief - Robert Hoover
C: 307-247-4277
O: 307-337-1288
H: 307-265-4623

Assistant Fire Chief - Wes Gilmore
C: 307-259-3831
O: 307-266-5667
H: 307-333-2611

CASPER MOUNTAIN FIRE DISTRICT

Fire Chief - Lisa Evers
C: 307-258-1213

Assistant Fire Chief - Joe Dutro
C: 307-315-3483

Chairman - Julie Bradley
C: 307-277-8611

CASPER FIRE DEPARTMENT

Fire Chief - Tom Solberg
C: 307-277-4577
O: 307-235-8221

Deputy Chief - Mark Harshman
C: 307-267-9102
O: 307-235-8324

PLATTE COUNTY

Wheatland Dispatch
307-322-2140

County Fire Warden - Aaron Clark
C: 307-331-6431
H: 307-322-1811

Assistant County Fire Warden - Ken Small
C: 307-331-9092
H: 307-322-2303

Authorized Representatives/Signatures:

By signature below, all signatories to this Annual Operating Plan certify that the individuals listed in this document are authorized to act in their respective areas for matters related to this Annual Operating Plan. By my signature below, I authorize my signature to be photocopied into each and all of the Annual Operating Fire Plans for the Wyoming Interagency Cooperative Fire Management Agreement.

I understand that my Entity will be provided a copy of the agreement with a photocopied signature page when the required signatures are obtained.

Counterpart Signatures. For the convenience of the parties, this agreement may be executed in one or more counterparts and each executed counterpart shall for all purposes be deemed an original and shall have the same force and effect as the original, but all of which shall together constitute in the aggregate one and the same instrument.

PREPARED AND APPROVED BY:

Albany County Fire Warden	Printed Name	Date
---------------------------	--------------	------

Chairman - Albany County Commissioners	Printed Name	Date
----------------------------------------	--------------	------

Laramie City Fire Chief	Printed Name	Date
-------------------------	--------------	------

President, Albany County Fire District No. 1	Printed Name	Date
----------------------------------------------	--------------	------

Mayor, President Laramie City Council	Printed Name	Date
---------------------------------------	--------------	------

Rock River VFD Chief	Printed Name	Date
----------------------	--------------	------

Carbon County Fire Warden	Printed Name	Date
---------------------------	--------------	------

Chairman Carbon County Commissioners	Printed Name	Date
--------------------------------------	--------------	------

Rawlins Fire Department	Printed Name	Date
-------------------------	--------------	------

Forest Supervisor, Medicine Bow Routt National Forests and Thunder Basin National Grasslands, USDA	Printed Name	Date
-------------------------------------------------------------------------------------------------------	--------------	------

Grants/Agreements Specialist, Forest Service, USDA	Printed Name	Date
----------------------------------------------------	--------------	------

District Manager, Wind River/Bighorn Basin District Bureau of Land Management, USDI	Printed Name	Date
----------------------------------------------------------------------------------------	--------------	------

District Manager, High Desert District Bureau of Land Management, USDI	Printed Name	Date
---------------------------------------------------------------------------	--------------	------

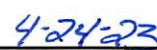
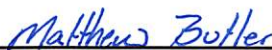
District Manager, High Plains District Bureau of Land Management, USDI	Printed Name	Date
---------------------------------------------------------------------------	--------------	------

Project Leader Central Sage Steppe Refuge Complex USFWS	Printed Name	Date
------------------------------------------------------------	--------------	------

Fort Laramie National Historic Site

Printed Name

Date



Laramie County Fire Warden
3962 Archer Parkway
Cheyenne, WY 82009

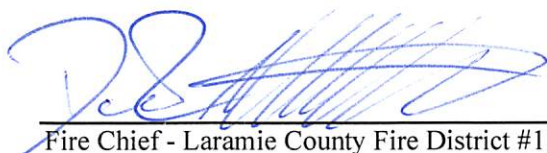
Printed Name

Date

Chairman - Laramie County Commissioners
310 W. 19th Street
Cheyenne, WY 82001

Printed Name

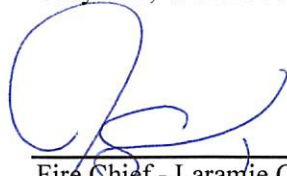
Date



Fire Chief - Laramie County Fire District #1
207 East Allison Rd.
Cheyenne, WY 82007

Printed Name

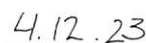
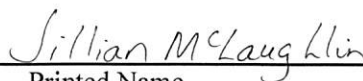
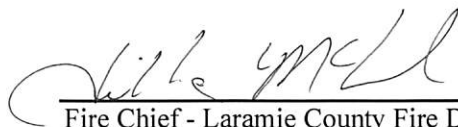
Date



Fire Chief - Laramie County Fire Authority
5800 North College Dr.
Cheyenne, WY 82009

Printed Name

Date



Fire Chief - Laramie County Fire District #3
P.O. Box 131
Albin, WY 82050

Printed Name


Date



Fire Chief - Laramie County Fire District #4
P.O. Box S, 4832 Main Ave.
Carpenter, WY 82054

Printed Name

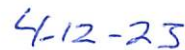
Date



Fire Chief - Laramie County Fire District #5
P.O. Box 870
Pine Bluffs, WY 82082



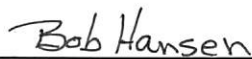
Printed Name



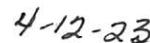
Date



Fire Chief - Laramie County Fire District #6
P.O. Box 103
Burns, WY 82053



Printed Name



Date



Fire Chief - Laramie County Fire District #9
P.O. Box 155
Chugwater, WY 82210



Printed Name



Date



Fire Chief - Laramie County Fire District #10
88 Harriman Rd.
Granite Canon, WY 82059

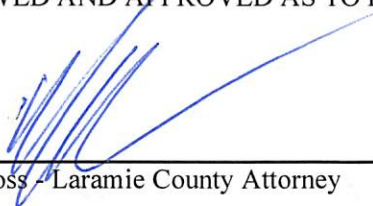


Printed Name



Date

REVIEWED AND APPROVED AS TO FORM ONLY



Mark Voss - Laramie County Attorney



Printed Name



Date

Converse County Fire Warden	Printed Name	Date
-----------------------------	--------------	------

Chairman - Converse County Commissioners	Printed Name	Date
------------------------------------------	--------------	------

Goshen County Fire Warden	Printed Name	Date
---------------------------	--------------	------

Chairman- Goshen County Commissioners	Printed Name	Date
---------------------------------------	--------------	------

Ft. Laramie Fire Protection District	Printed Name	Date
--------------------------------------	--------------	------

LaGrange Fire Protection District	Printed Name	Date
-----------------------------------	--------------	------

Prairie Center Fire District	Printed Name	Date
------------------------------	--------------	------

Hawk Springs Fire District	Printed Name	Date
----------------------------	--------------	------

Jay Em Fire District	Printed Name	Date
----------------------	--------------	------

Torrington Fire District #3	Printed Name	Date
-----------------------------	--------------	------

Veteran Fire Protection District	Printed Name	Date
----------------------------------	--------------	------

Yoder Fire District	Printed Name	Date
---------------------	--------------	------

Lingle Fire District	Printed Name	Date
----------------------	--------------	------

Huntley Fire District	Printed Name	Date
-----------------------	--------------	------

Chugwater Fire District	Printed Name	Date
-------------------------	--------------	------

Natrona County Fire Warden	Printed Name	Date
----------------------------	--------------	------

Chairman - Natrona County Commissioners	Printed Name	Date
-----------------------------------------	--------------	------

Fire Chief - Natrona County Fire Protection District	Printed Name	Date
------------------------------------------------------	--------------	------

Chairman - Natrona County Fire Protection District	Printed Name	Date
----------------------------------------------------	--------------	------

Fire Chief - Casper Mountain Fire District	Printed Name	Date
--------------------------------------------	--------------	------

Chairman - Casper Mountain Fire District	Printed Name	Date
------------------------------------------	--------------	------

Bar Nunn Fire Department	Printed Name	Date
--------------------------	--------------	------

Mills Fire Departmet	Printed Name	Date
----------------------	--------------	------

Evansville Fire Department	Printed Name	Date
----------------------------	--------------	------

City of Casper - City Manager	Printed Name	Date
-------------------------------	--------------	------

Salt Creek Emergency Service	Printed Name	Date
------------------------------	--------------	------

Platte County Fire Warden	Printed Name	Date
---------------------------	--------------	------

Chairman - Platte County Commissioners	Printed Name	Date
----------------------------------------	--------------	------

Platte County Fire District 1F	Printed Name	Date
--------------------------------	--------------	------

Platte County District 2F	Printed Name	Date
---------------------------	--------------	------

Guernsey Rural Fire District	Printed Name	Date
------------------------------	--------------	------

Chugwater Fire Protection District	Printed Name	Date
------------------------------------	--------------	------

Hartville Volunteer Fire Department	Printed Name	Date
-------------------------------------	--------------	------

Antelope Gap Rural Fire District	Printed Name	Date
----------------------------------	--------------	------

Base Operations Manager Wyoming Military Department	Printed Name	Date
--------------------------------------------------------	--------------	------

The Adjutant General Wyoming Military Department	Printed Name	Date
-----------------------------------------------------	--------------	------

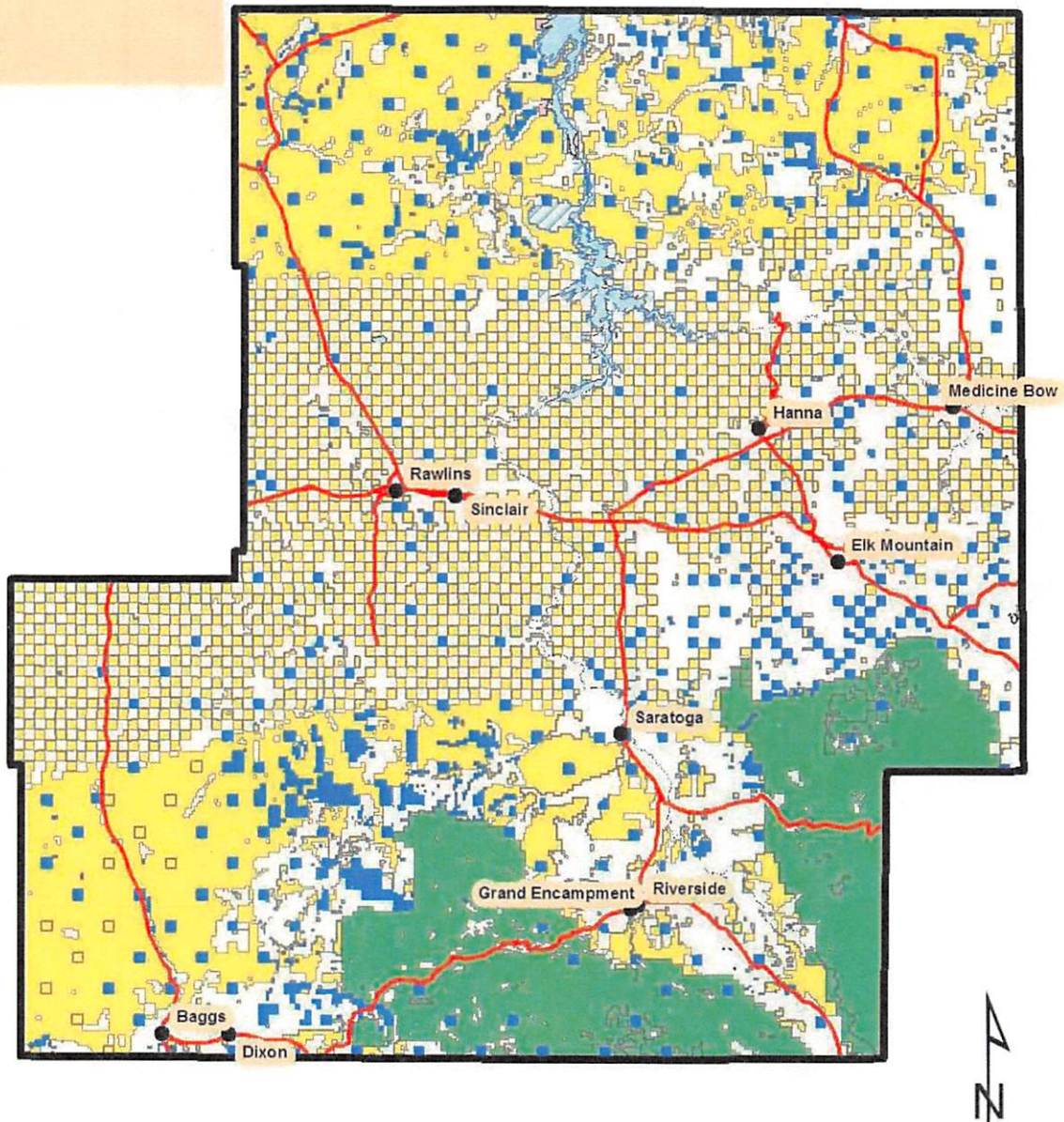
The United States Property and Fiscal Officer Wyoming Military Department	Printed Name	Date
------------------------------------------------------------------------------	--------------	------

District Forester - Wyoming State Forestry Division	Printed Name	Date
-----------------------------------------------------	--------------	------

Carbon County

Legend

- Bureau of Land Management
- Bureau of Reclamation
- Fish & Wildlife
- Forest Service
- Private
- State
- Water

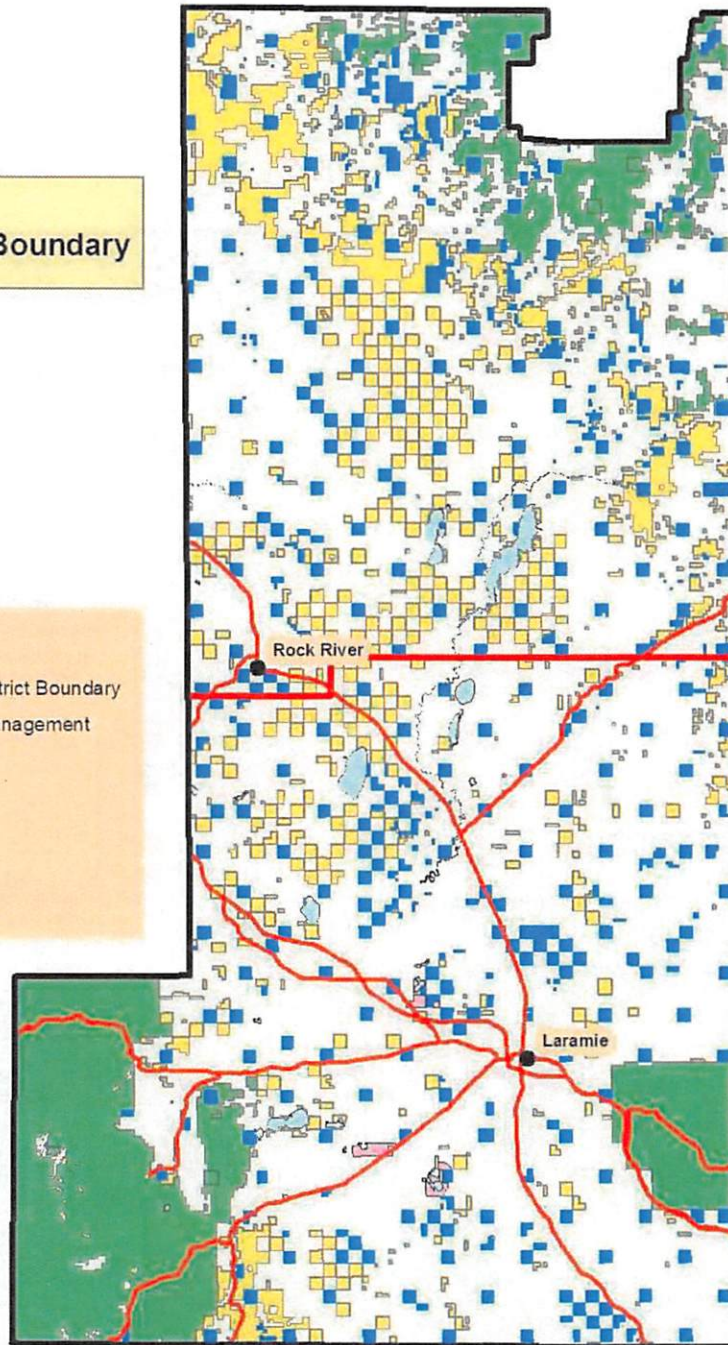


Albany County

Albany Co. Fire
North of District Boundary

Legend

- Albany Co Fire District Boundary
- Bureau of Land Management
- Fish & Wildlife
- Forest Service
- Private
- State
- Water



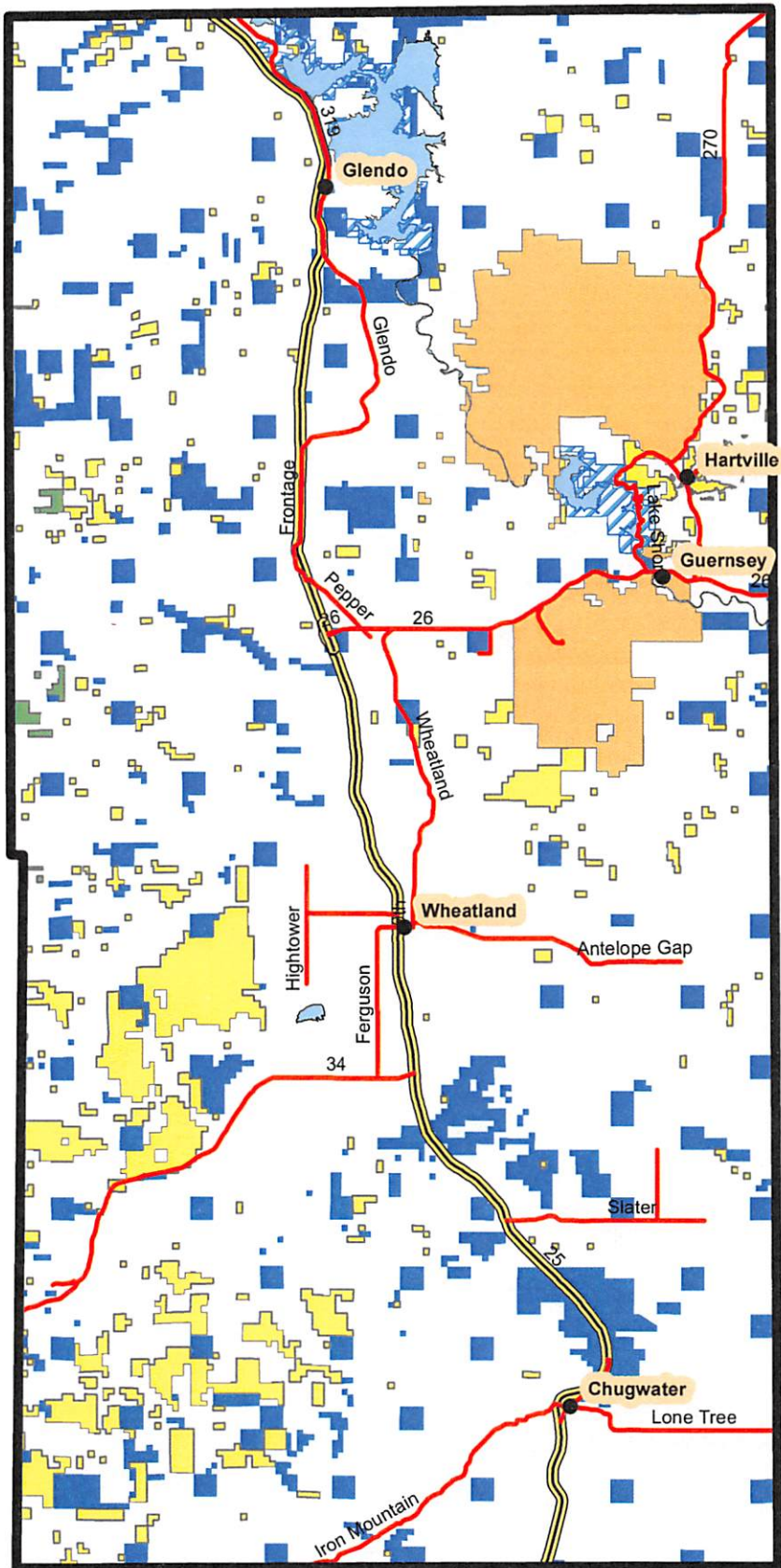
Twp. 21

Twp. 20

Fire District 1
South of District Boundary



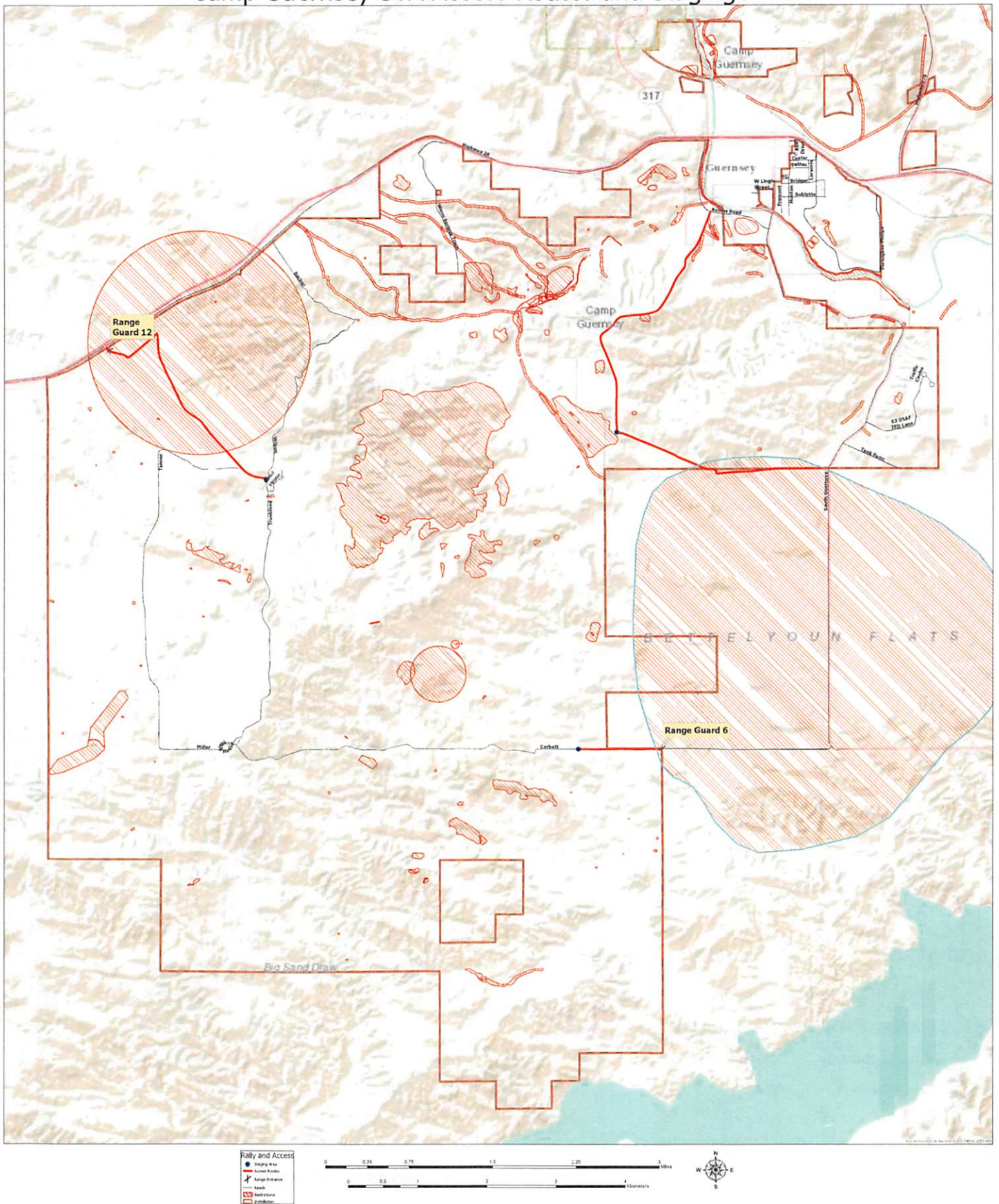
Attachment E Platte County



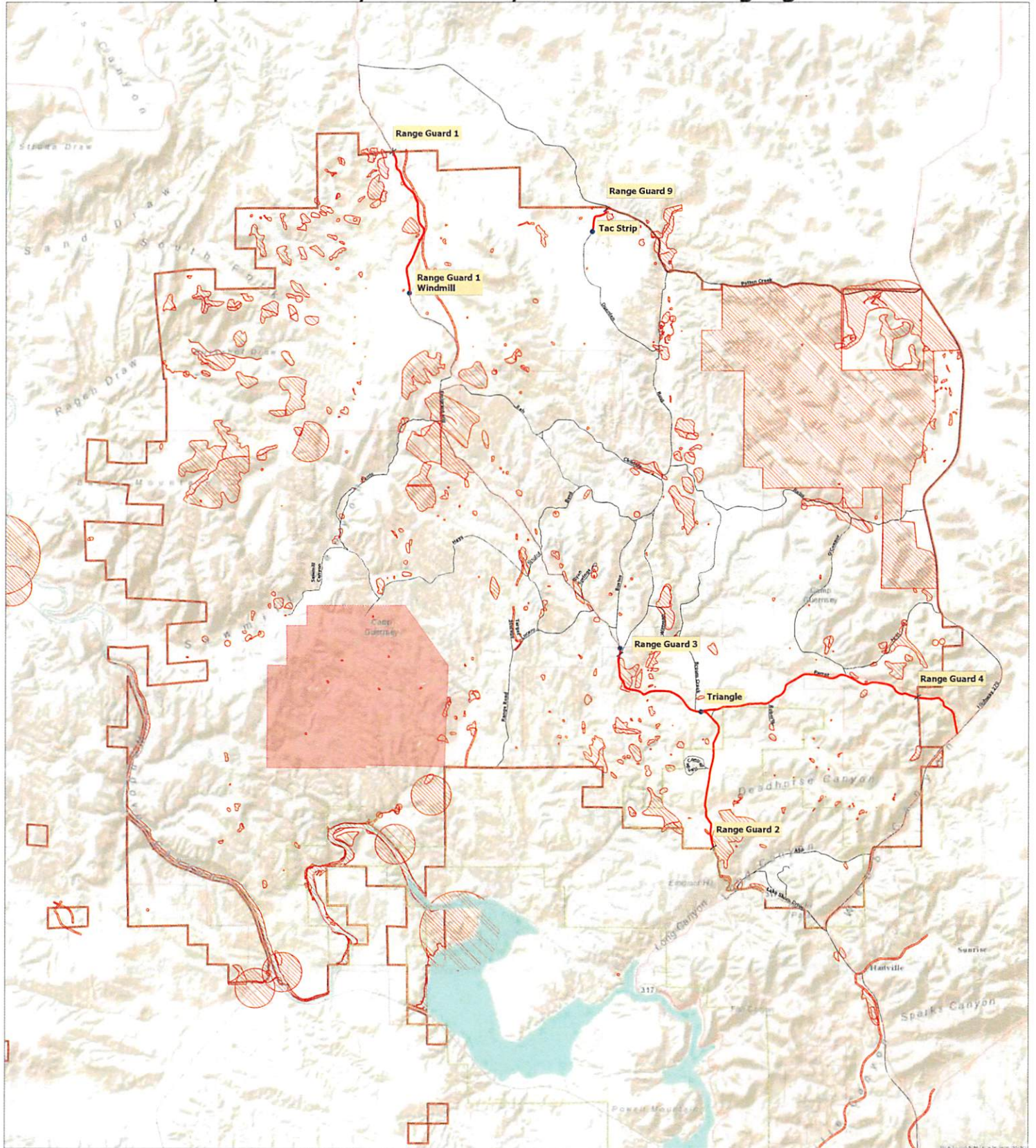
Legend

- Bureau of Land Management
- Bureau of Reclamation / State Park
- Camp Guernsey
- Forest Service
- Private
- State
- Water
- Interstate 25

Camp Guernsey STA Access Routes and Staging Areas



Camp Guernsey NTA Entry Points and Staging Areas

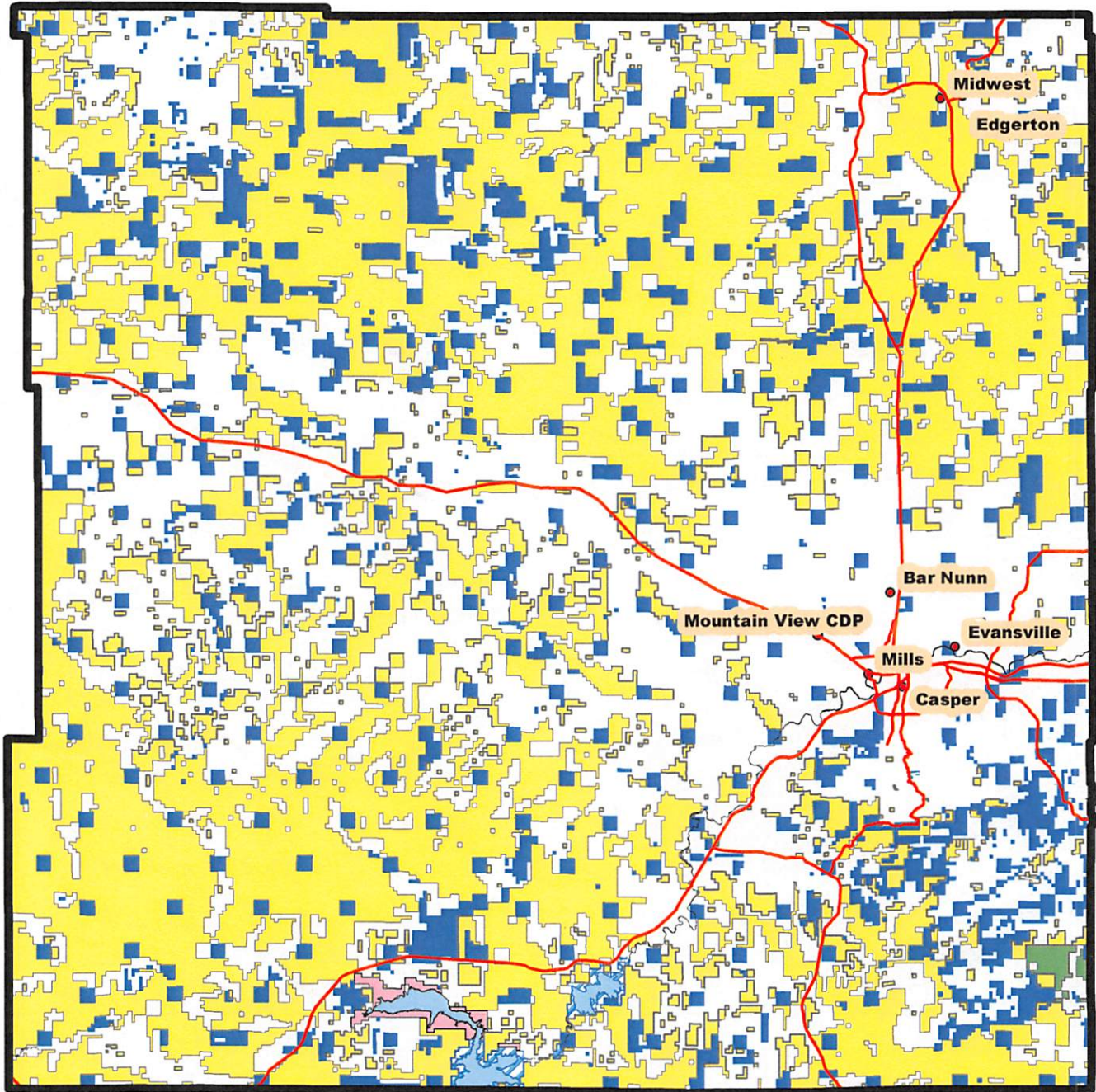


- Staging Area
- ★ Range Entrance
- Access Routes
- Roads
- ▨ Restrictions
- Installation
- Impact Area



Attachment E

Natrona County

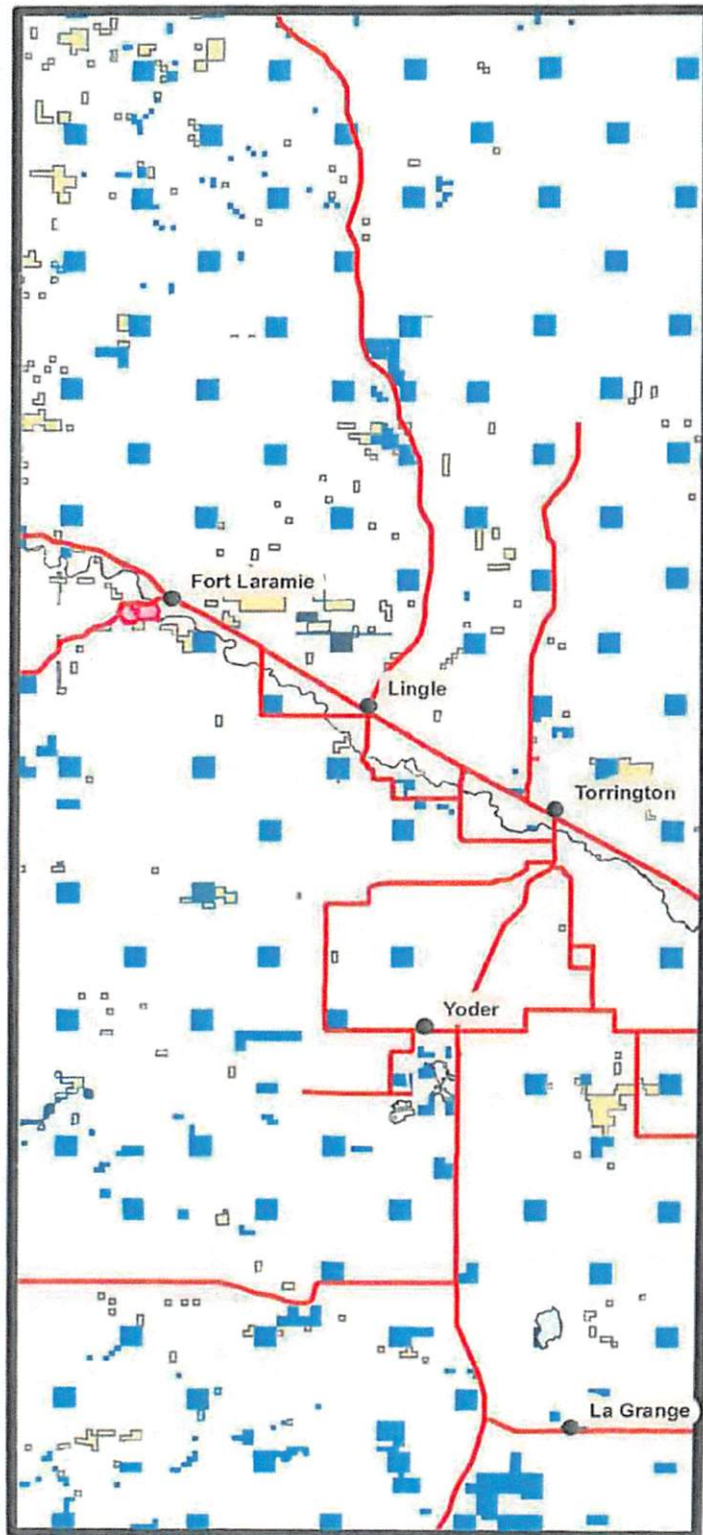


Legend

- Bureau of Land Management
- Bureau of Reclamation
- Fish & Wildlife
- Forest Service
- Private
- State
- Water



Goshen County

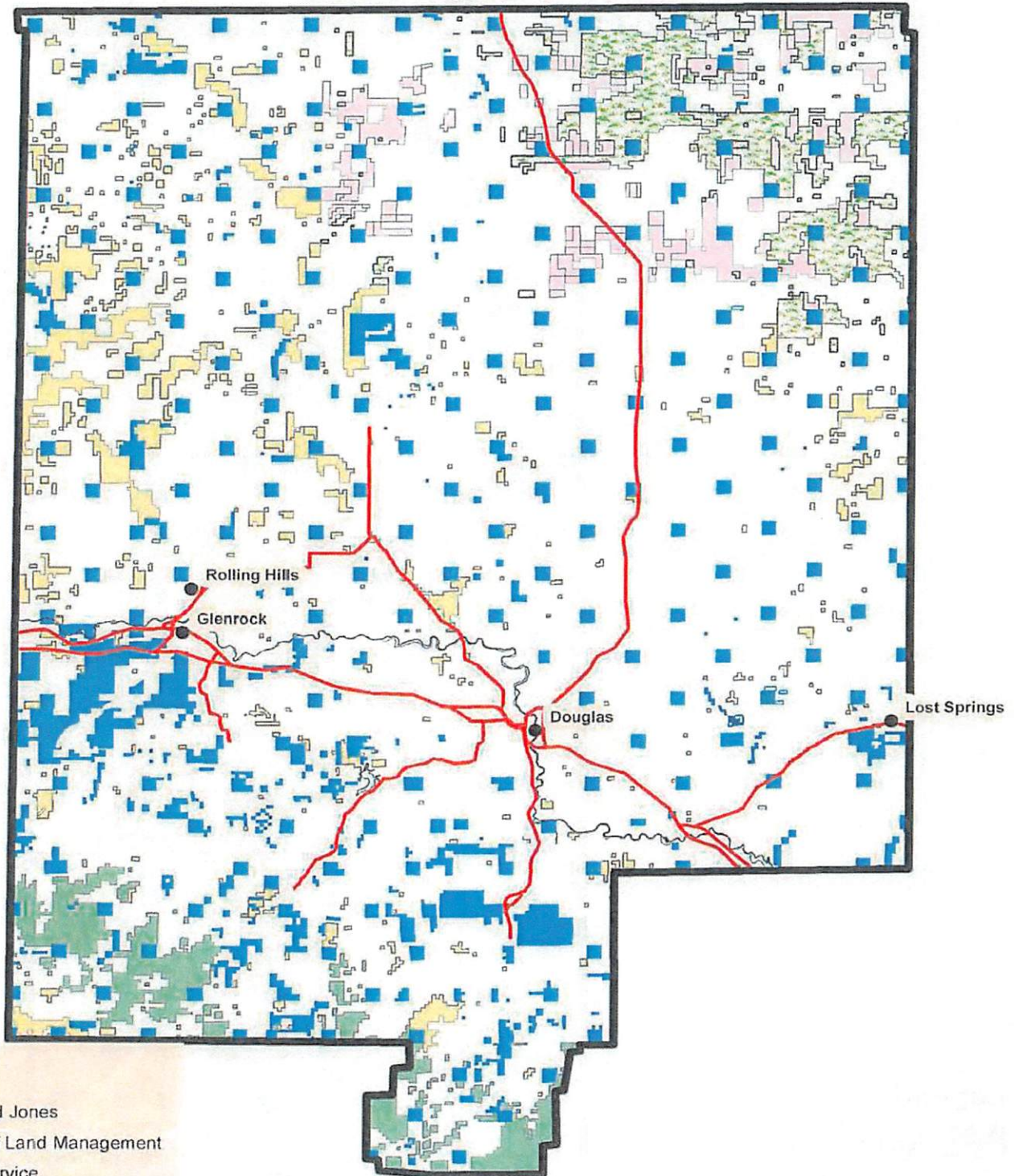


Legend

- Fort Laramie NHS
- Bureau of Land Management
- Private
- State
- Water



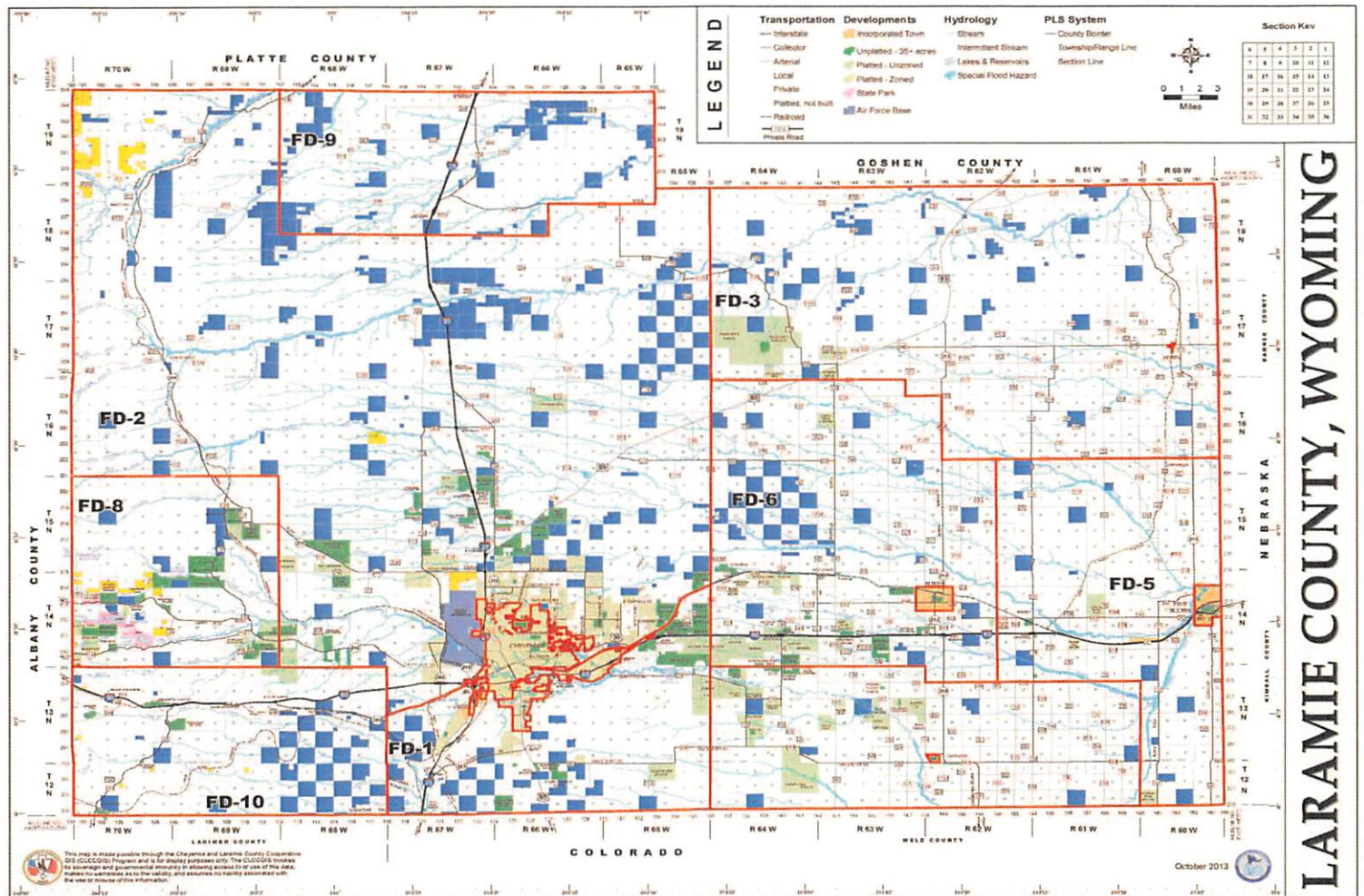
Converse County



Legend

- Bankhead Jones
- Bureau of Land Management
- Forest Service
- National Grasslands
- Private
- State
- Water





CONTROLLED UNCLASSIFIED INFORMATION//BASIC

RADIO COMMUNICATIONS PLAN			WY-HDD Group 5 Rawlins		Date Prepared: 1-23-2013		
			W= Wide Band (25.0 KHZ) N= Narrow Band (12.5 KHZ)				
Ch #	Channel Name	Function	RX Freq	RX Tone	TX Freq	Tx Tone	Remarks
1	Fire 1	BLM Tac	166.6375 N		166.6375 N		
2	Fire 2	BLM Tac	166.8250 N		166.8250 N		
3	Fire 3	BLM Tac	167.1250 N		167.1250 N		
4	Scene	BLM Tac	166.0875 N		166.0875 N		
5	Rawlins Base	HDD-BLM Base	168.2750 N		168.2750 N		
6	Rawlins Rpt	HDD-BLM RPT	168.2750 N		164.2500 N	See	Use HDD BLM-Rawlins Rpt. Pick List
7	FERN	WY State/Local	154.2800 N		154.2800 N		
8	Med Bow West Rpt	USFS RPT	171.7875 N	110.9	164.1500 N	See	Use Meb Bow West Rpt. Pick List (Saratoga Base)
9	Med Bow East Rpt	USFS RPT	171.5000 N	110.9	164.0000 N	See	Use Meb Bow East Rpt. Pick List (Laramie Base)
10	Med Bow North	USFS RPT	173.7625 N	110.9	164.8000 N	See	Use Meb Bow North Rpt. Pick List (Douglas Base)
11	Albany Co. Rpt	Co. Road & Bridge	155.7600 N	114.8	155.1450 N		Albany Co. Rpt use CH 11/ CH 12Tone (114.8) Slaved
12	Latham Draw Rpt	Carbon/SW	172.5875 N		164.2500 N	100	Carbon and Sweetwater Counties
13	Carbon County	Local Tactical	155.8050 N		155.8050 N		
14	A/G 10	Air to Ground	166.9375 N		166.9375 N		IA Zone WY04
15	A/G 15	Air to Ground	167.5250 N		167.5250 N		IA Zone WY04 & WY07
16	A/G 12	Air to Ground	167.0750 N		167.0750 N		IA Zone WY07
<u>HDD BLM-Rawlins Rpt. Tone Guard Pick List</u> CH 6			<u>Med Bow West Rpt. Tone Guard Pick List</u> CH 8		<u>Med Bow East Rpt. Tone Guard Pick List</u> CH 9 4 - Jelm Mtn.		<u>Med Bow North Rpt. Tone Guard Pick List</u> CH 10 6 - Gunny Sack Mtn. (156.7)
1 - Elk Mtn (110.9) 7 - Portable Rpt. (167)			3 - Blackhall Mtn. (131.8)		(136.5)		7 - Cow Creek Mtn. (167.9)
2 - Flattop (123.0)			10 - Kennaday Peak (107.2)		5 - Pole Mtn (146.2)		8 - Black Mtn.(103.5)
3 - Laramie Pk. (131.8)			11 - Bridger Peak (114.8)		6 - Spruce Mtn. (156.7)		Albany County Rpt. Tone Guard Pick List
4 - Copper Mtn. (136.5)							CH 11 - Albany CO. Rpt
5 - Whiskey Peak (146.2)							15 - Jelm Mountain
							12- Rock River

Group 5 User Select Tones
1
2 110.9
3 123.0
4 131.8
5 136.5
6 146.2
7 156.7
8 167.9
9 103.5
10 192.8
11 107.2
12 114.8
13
14
15
16

DISTRICT 2 ATTACHMENT B - 5

RADIO COMMUNICATIONS PLAN			WY-HDD Group 6 Rock Springs		Date Prepared: 1-23-2013		
			W= Wide Band (25.0) N= Narrow Band (12.5)				
Ch #	Channel Name	Function	RX Freq	RX Tone	TX Freq	Tx Tone	Remarks
1	Fire 1	BLM Tac	166.6375 N		166.6375 N		
2	Fire 2	BLM Tac	166.8250 N		166.8250 N		
3	Fire 3	BLM Tac	167.1250 N		167.1250 N		
4	Scene	BLM Tac	166.0875 N		166.0875 N		
5	Rock Springs Base	HDD-BLM Base	168.5750 N		168.5750 N		
6	Rock Springs Rpt.	HDD-BLM RPT	168.5750 N		165.0000 N	See	Use HDD BLM-Rock Springs Rpt. Pick List
7	FERN	WY State/Local	154.2800 N		154.2800 N		
8	Law Mutual Aid	Local Law/Fire	154.8750 N		154.8750 N		
9	Sweetwater Co.	Local Tactical	155.0550 N		155.0550 N		
10	Fire District # 1	Local Tactical	155.8725 N		155.8725 N		
11	Unita Co.	Local Tactical	154.4300 N		154.4300 N		
12	Sublette Co.	Local Tactical	154.9800 N		154.9800 N		
13	Kemmerer VFD	Local Tactical	154.4150 N		154.4150 N		
14	Nat. All Call	Crew	163.1000 N		163.1000 N		
15	A/G 10	Air to Ground	166.9375 N		166.9375 N		IA Zone WY04
16	A/G 15	Air to Ground	167.5250 N		167.5250 N		IA Zone WY04
HDD BLM-Rock Springs Rpt. Tone Guard Pick List CH 6							
1 - Hogs Back (110.9)							
2 - Twin Buttes (123.0)							
3 - Evanston (131.8)							
4 - Little Mountain (136.5)							
7 - Portable Repeater							

#	Group 6 User Select Tones
1	110.9
2	123.0
3	131.8
4	136.5
5	
6	
7	167.9
8	
9	
10	
11	
12	
13	
14	
15	
16	

CHANNEL NAME		RX	TONE	TX	TONE
Albany County	Albany CO Fire Direct R & B	155.760		155.760	
	Fire 1 Rept.	154.430		154.830	192.8
	Fire 1 direct	154.430		154.430	
	Fire 2	154.310		154.310	
	R&B Jelm	155.760		155.145	114.8
	R&B Rock River	155.760		155.145	192.8
Aviation	Flight Following	168.650		168.650	110.9
*NARROWBAND	Air Guard	168.625		168.625	110.9
Aviation IA Air to Ground Goshen, Platte & South Med Bow	WY07 – A/G 12 – Primary	167.075		167.075	
	A/G 15 – Secondary	167.525		167.525	
	WY04 – A/G 10 –Primary A/G 15 – Secondary	166.9375 167.525		166.9375 167.525	
Natrona Co in Cody Dispatch	WY05 – A/G 12 – Primary	167.0750		167.0750	
	A/G 13 – Secondary	167.4250		167.4250	
	A/G 35 - Secondary	167.2250		167.2250	
Natrona & Converse Co.	WY03 – A/G 15 – Primary	167.525		167.525	
	A/G 35 – Secondary	167.2250		167.2250	
	A/G 31 – Secondary	166.7875		166.7875	
BLM					
BLM-Rawlins	Sheep Mtn Rptr	168.275		164.250	136.5
High Desert Dist.	Elk Mountain Rptr	168.275		164.250	110.9
(HDD)	Flat Top Rptr	168.275		164.250	123.0
	Whiskey Peak Rptr	168.275		164.250	146.2
	Laramie Peak Rptr	168.275		164.250	131.8
	Lincoln Head Rptr	168.275		164.250	156.7
	Portable Rptr 1	168.275		164.250	167.9
	Portable Rptr 2	168.275		164.250	103.5
BLM-Casper	Casper Mtn Rptr	168.300		171.725	
High Plains Dist.	Laramie Peak BLM-Casper (PR) RPT	168.300		171.725	131.8
(HPD)	Pumpkin Butte RPT	168.300		171.725	110.9
BLM Tactical					
High Desert-Rawlins & Rock Springs Field Offices	High Desert Dist. -Fire 2	166.825		166.825	
High Plains-Casper Field Office	High Plains Dist. -Fire 3	167.125		167.125	
Wind River-Worland & Cody Field Offices	Wind River Dist. – Fire 1	166.6375		166.6375	
Carbon County	Carbon CO Baggs	155.805		158.760	107.2
	Carbon CO Elk Mountain	155.805		158.760	100.0

	Carbon CO Fire Direct	155.805		155.805	100.0
	Carbon CO Whiskey Peak	155.805		158.760	114.8
Converse County	Converse CO Rural Fire	154.0700	123.0	154.0700	123.0
	Glenrock Fire	154.340		154.340	
	Glenrock Fire TAC	154.160		154.160	

Goshen County	Channel Name	RX		TX	
	Torrington Fire	154.145		154.145	
	Lingle Fire	154.235		154.235	
	Fort Laramie Fire	154.205		154.205	
	Prairie Center Fire	154.490		154.490	
	Jay'Em Fire	154.160		154.160	
	Yoder Fire	154.040		154.040	
	Hawk Springs Fire	154.430		154.430	
	LaGrange Fire	154.830		154.830	
	Chugwater Fire	154.805		154.805	
	Veteran Fire	154.130		154.130	
	WyoLink Trucking Talk Groups:				
	MAT 07				
	07 CAT 1				
	07 CAT 2				
	07 FIRE 1				
	07 FIRE 2				
Laramie County	Laramie CO Repeater	155.715		153.995	100.0
	Laramie CO SO – Repeater	155.655	100.0	154.890	
	Laramie CO Fire Direct	155.715		155.715	
	Laramie CO So – Direct	155.655		155.655	
	WyoLink Trucking Talk Groups:				
	MAT 07				
	02 CAT 1-4				
Med-Emergency	Life Flight WY Med Center	155.340		155.340	
VFire 21	Alternative for Life Flight commo	154.280		154.280	156.7

Natrona County	Natrona CO Fire	155.745		155.745	
	Natrona CO TAC	154.430		154.430	
	Natrona CO Parks	155.895		155.895	
Platte County	Platte CO Fire	155.805		155.805	
	Wheatland Fire	154.430		154.430	
	North Tower	153.845		153.845	162.2
Statewide	Air/Ground 1, 4	171.500		171.500	
Statewide	Air/Ground 2, 6 Primary, 3 Sec	168.675		168.675	
Statewide	Air/Ground 3 Primary, 1, 6 Sec	171.500		171.500	

WY State Forestry	WY State Forestry TAC	151.295		151.295	
	WY State Forestry Direct	151.160		151.160	
Air Ambulance/ Air Medevac	VMED28	155.34		155.34	156.7

Laramie County Fire Talkgroups				
	RX	Tone	TX	Tone
02 FDISP A	WyoLink			
02 FDISP B	WyoLink			
Tac 1	153.9275		153.9275	
Tac 2	154.16		154.16	
Tac 3	159.375		159.375	
Tac 4	154.25		154.25	
911 CHEY	155.7150 N	CSQ	153.9950 N	100
911 ALBIN	155.7150 N	CSQ	153.9950 N	192.8
911 BURNS	155.7150 N	CSQ	153.9950 N	118.8
911 CRPNTR	153.9950 N	CSQ	155.7150 N	141.3
911 HARR	155.7150 N	CSQ	153.9950 N	162.2
911 HRSCK	155.7150 N	CSQ	153.9950 N	123
02 CAT 1	WyoLink			
02 CAT 2	WyoLink			
02 CAT 3	WyoLink			
02 CAT 4	WyoLink			
*National Interoperable Channels Available				

CHANNEL NAME		RX	TONE	TX	TONE
Albany County	Albany CO Fire Direct R & B	155.760		155.760	
	Fire I Rept.	154.430		154.830	192.8
	Fire I direct	154.430		154.430	
	Fire 2	154.310		154.310	
	R&B Jelm	155.760		155.145	114.8
	R&B Rock River	155.760		155.145	192.8
Aviation	Flight Follow	168.650		168.650	110.9
*NARROWBAND	Air Guard	168.625		168.625	110.9
Aviation IA Air to Ground Goshen, Platte & South Med Bow	WY07 - A/G 12 - Primary A/G 15 - Secondary	167.075 167.525		167.075 167.525	
	WY04 - A/G 10 - Primary A/G 15 - Secondary	166.9375 167.525		166.9375 167.525	
Natrona Co in Cody Dispatch	WY05 - A/G 12 - Primary A/G 13 - Secondary A/G 35 - Secondary	16 7.0750 167.4250 16 7.2250		167.0750 167.4250 16 7.2250	
Natrona & Converse Co.	WY03 - A/G 15 - Primary A/G 35 - Secondary A/G 3 I - Secondary	167.525 167.2250 166.7875		167.525 167.2250 166.7875	
BLM					
BLM-Rawlins	Rawlins Base	168.275		168.275	
High Desert Dist. (HOD)	Elk Mountain repeater	168.275		164.250	110.9
	Flat Top repeater	168.275		164.250	123.0
	Whiskey Peak repeater	168.275		164.250	146.2
	Laramie Peak BLM-Rawlins(PR) RPT	168.275		164.250	131.8
BLM-Casper	Casper Base (Casper Mtn)	168.300		168.300	
High Plains Dist. (HPD)	Laramie Peak BLM-Casper (PR) RPT	168.300		171.725	131.8
	Pumpkin Butte RPT	168.300		171.725	110.9
BLM Tactical					
High Desert-Rawlins & Rock Springs Field Offices	High Desert Dist. -Fire 2	166.825		166.825	
High Plains-Casper Field Office	High Plains Dist. -Fire 3	167.125		167.125	
Wind River-Worland & Cody Field Offices	Wind River Dist. - Fire I	166.6375		166.6375	
Carbon County	Carbon CO Baggs	155.805	107.2	158.760	
	Carbon CO Elk Mountain	155.805		158.760	100.0
	Carbon CO Fire Direct	155.805		155.805	100.0
	Carbon CO Whiskey Peak	155.805	114.8	158.760	
Converse County	Converse CO Rural Fire	154.0700		154.0700	
	Glenrock Fire	154.340		154.340	
	Glenrock Fire TAC	154.160		154.160	

	Channel Name	RX		TX	
Goshen County	Torrington Fire	154.145		154.145	
	Lingle Fire	154.235		154.235	
	Fort Laramie Fire	154.205		154.205	
	Prairie Center Fire	154.490		154.490	
	Jay' Em Fire	154.160		154.160	
	Yoder Fire	154.040		154.040	
	Hawk Springs Fire	154.430		154.430	
	LaGrange Fire	154.830		154.830	
	Chugwater Fire	154.805		154.805	
	Veteran Fire	154.130		154.130	
	WyoLink Trucking Talk Groups:				
	MAT07				
	07 CAT 1				
	07 CAT 2				
	07 FIRE 1				
	07 FIRE 2				
Laramie County	Laramie CO Repeater	155.715		153.995	100.0
	Laramie CO SO - Repeater	155.655	100.0	154.890	
	Laramie CO Fire Direct	155.715		155.715	
	Laramie CO So - Direct	155.655		155.655	
	WyoLink Trucking Talk Groups:				
	MAT07				
	07 CAT 1				
Med-Emergency	Life Flight WY Med Center	155.340		155.340	
VFire 21	Alternative for Life Flight commo	154.280		154.280	156.7
Natrona County	Natrona CO Fire	155.745		155.745	
	Natrona CO TAC	154.430		154.430	
	Natrona CO Parks	155.895		155.895	
Platte County	Platte CO Fire	155.805		155.805	
	Wheatland Fire	154.430		154.430	
	North Tower	153.845		153.845	162.2
Statewide	Air/Ground 1, 4	171.500		171.500	
Statewide	Air/Ground 2, 6 Primary, 3 Sec	168.675		168.675	
Statewide	Air/Ground 3 Primary, 1, 6 Sec	171.500		171.500	
WY State Forestry	WY State Forestry TAC	151.295		151.295	
	WY State Forestry Direct	151.160		151.160	
Air Ambulance/ Air Medevac	VMED28	155.34		155.34	156.7

Medicine Bow-Routt NF and Thunder Basin NG (Medicine Bow NF)

2018 Radio Communications Plan **NORTH**

Group #1 MB-TB Repeaters

CH #	Site Name	RX Freq	RX CTCSS	TX Freq	TX CTCSS	Narrow/Wide	8-CHR Name
1	Warren Peak Repeater	171.5000	103.5	164.0000	123.0	N	WARREN
2	Elk Mtn Repeater	171.5000	103.5	164.0000	131.8	N	ELK MT
3	Rochelle Hills Repeater	171.5000	103.5	164.0000	107.2	N	ROCHELLE
4	LPU Direct (Douglas)	173.7625	110.9	173.7625	110.9	N	LPU DIR
5	Black Mtn Repeater	173.7625	110.9	164.8000	103.5	N	BLACK MT
6	Cow Creek Mtn Repeater	173.7625	110.9	164.8000	167.9	N	COW CREK
7	Gunny Sack Repeater	173.7625	110.9	164.8000	156.7	N	GUNY SAK
8	Southeast Direct (Laramie)	171.5000	110.9	171.5000	110.9	N	SE DIREC
9	Pole Mtn Repeater	171.5000	110.9	164.0000	146.2	N	POLE
10	Spruce Mtn Repeater	171.5000	110.9	164.0000	156.7	N	SPRUCE
11	Jelm Mtn Repeater [MB]	171.5000	110.9	164.0000	136.5	N	JELM MB
12	Southwest Direct (Saratoga)	171.7875	110.9	171.7875	110.9	N	SW DIREC
13	Kennaday Peak Repeater	171.7875	110.9	164.1500	107.2	N	KENNADAY
14	Blackhall Repeater [MB]	171.7875	110.9	164.1500	131.8	N	BLKHAL M
15	Bridger Peak Repeater	171.7875	110.9	164.1500	114.8	N	BRIDGER
16	MBRTB Work 1	163.7125	110.9	163.7125	110.9	N	WORK 1

Group #3 Thunder Basin [Douglas RD]

CH #	Site Name	RX Freq	RX CTCSS	TX Freq	TX CTCSS	Narrow/Wide	8-CHR Name
1	Warren Peak Repeater	171.5000	103.5	164.0000	123.0	N	WARREN
2	Elk Mtn Repeater	171.5000	103.5	164.0000	131.8	N	ELK MT
3	Rochelle Hills Repeater	171.5000	103.5	164.0000	107.2	N	ROCHELLE
4	MBRTB Work 1	163.7125	110.9	163.7125	110.9	N	WORK 1
5	Medicine Bow Fire TAC	166.5500	ø	166.5500	ø	N	MB TAC
6	VFIRE21	154.2800	ø	154.2800	156.7	N	VFIRE21
7	Converse Co. Rural Fire	154.0700	ø	154.0700	ø	N	CVC RURL
8	VMED28	155.3400	ø	155.3400	156.7	N	VMED28
9	Weston Co. Fire [R]	155.7150	ø	155.1150	156.7	N	WSTN CF
10	Weston Co. Fire TAC	151.2200	ø	151.2200	ø	N	WSTN CFT
11	Campbell Co. N [R]	153.9500	167.9	154.4150	162.2	N	CMBLC NR
12	Campbell Co. S [R]	153.9500	167.9	154.4150	151.4	N	CMBLC SR
13	BLM Hunter Mesa Repeater	168.3000	ø	171.7250	156.7	N	HUNTER B
14	BLM Pumpkin Butte Repeater	168.3000	ø	171.7250	110.9	N	PUMPKN B
15	Air-to-Ground 15	167.5250	ø	167.5250	ø	N	A/G 15
16	Air-to-Ground 35	167.2250	ø	167.2250	ø	N	A/G 35

Group #4 Medicine Bow Laramie Pk [Douglas RD -PU]

CH #	Site Name	RX Freq	RX CTCSS	TX Freq	TX CTCSS	Narrow/Wide	8-CHR Name
1	Black Mtn Repeater	173.7625	110.9	164.8000	103.5	N	BLACK MT
2	Cow Creek Mtn Repeater	173.7625	110.9	164.8000	167.9	N	COW CREK
3	Gunny Sack Repeater	173.7625	110.9	164.8000	156.7	N	GUNY SAK
4	LPU Portable Repeater	173.7625	110.9	164.8000	100.0	N	LPU PORT
5	Medicine Bow Fire TAC	166.5500	ø	166.5500	ø	N	MB TAC
6	MBRTB Work 1	163.7125	110.9	163.7125	110.9	N	WORK 1
7	BUSBAND [D]	154.5150	ø	154.5150	ø	N	BUSBAND
8	VFIRE21	154.2800	ø	154.2800	156.7	N	VFIRE21
9	BLM Laramie Pk Repeater	168.2750	ø	171.7250	131.8	N	BLM LARP
10	Platte Co. Fire (D)	155.8050	ø	155.8050	ø	N	PLT CO
11	Converse Co. Rural Fire	154.0700	ø	154.0700	ø	N	CVC RURL
12	Albany Co. SO (D)	155.2500	192.8	155.2500	192.8	N	AC SO
13	VMED28	155.3400	ø	155.3400	156.7	N	VMED28
14	BLM Fire 3	167.1250	ø	167.1250	ø	N	BLM FR3
15	Air-to-Ground 12	167.0750	ø	167.0750	ø	N	A/G 12
16	Air-to-Ground 15	167.5250	ø	167.5250	ø	N	A/G 15

Group #5 Med Bow Southeast [Laramie RD/Supervisor's Office]							
CH #	Site Name	RX Freq	RX CTCSS	TX Freq	TX CTCSS	Narrow/Wide	8-CHR Name
1	Southeast Direct (Laramie)	171.5000	110.9	171.5000	110.9	N	SE DIREC
2	MBRTB Work 1	163.7125	110.9	163.7125	110.9	N	WORK 1
3	Medicine Bow Fire TAC	166.5500	ø	166.5500	ø	N	MB TAC
4	Pole Mtn Repeater	171.5000	110.9	164.0000	146.2	N	POLE
5	Spruce Mtn Repeater	171.5000	110.9	164.0000	156.7	N	SPRUCE
6	Jelm Mtn Repeater [MB]	171.5000	110.9	164.0000	136.5	N	JELM MB
7	Kennaday Peak Repeater	171.7875	110.9	164.1500	107.2	N	KENNADAY
8	Blackhall Repeater [MB]	171.7875	110.9	164.1500	131.8	N	BLKHAL M
9	Bridger Peak Repeater	171.7875	110.9	164.1500	114.8	N	BRIDGER
10	Albany Cnty Jelm Rptr	155.7600	114.8	155.1450	114.8	N	AC JELM
11	Albany Co. Fire 1[D]	154.4300	192.8	154.4300	192.8	N	AC FIRE1
12	VMED28	155.3400	ø	155.3400	156.7	N	VMED28
13	VFIRE21	154.2800	ø	154.2800	156.7	N	VFIRE21
14	Air-to-Ground 12	167.0750	ø	167.0750	ø	N	A/G 12
15	Air-to-Ground 15	167.5250	ø	167.5250	ø	N	A/G 15
16	Air-to-Ground 10	166.9375	ø	166.9375		N	A/G 10

Group #6 Med Bow Southwest [Brush Creek/Hayden RD]							
CH #	Site Name	RX Freq	RX CTCSS	TX Freq	TX CTCSS	Narrow/Wide	8-CHR Name
1	MBRTB Work 1	163.7125	110.9	163.7125	110.9	N	WORK 1
2	Medicine Bow Fire TAC	166.5500	ø	166.5500	ø	N	MB TAC
3	Blackhall Repeater [MB]	171.7875	110.9	164.1500	131.8	N	BLKHAL M
4	Kennaday Peak Repeater	171.7875	110.9	164.1500	107.2	N	KENNADAY
5	Bridger Peak Repeater	171.7875	110.9	164.1500	114.8	N	BRIDGER
6	Spruce Mtn Repeater	171.5000	110.9	164.0000	156.7	N	SPRUCE
7	Pole Mtn. Repeater	171.5000	110.9	164.0000	146.2	N	POLE
8	Jelm Mtn Repeater [MB]	171.5000	110.9	164.0000	136.5	N	JELM MB
9	Encampment Fire	154.0550	131.8	154.0550	131.8	N	ENCP FR
10	Saratoga Fire	154.4500	100.0	154.4500	100.0	N	SRATGAFR
11	VFIRE21	154.2800	156.7	154.2800	156.7	N	VFIRE21
12	BLM Scene of Action[Rawlins]	166.0875	ø	166.0875	ø	N	BLM SOA
13	WY Mutual Aid	154.8750	ø	154.8750	156.7	N	WY MUTAL
14	Southwest Portable Repeater	171.7875	110.9	164.1500	100.0	N	SW PORT
15	Air-to-Ground 10	166.9375	ø	166.9375		N	A/G 10
16	Air-to-Ground 15	167.5250	ø	167.5250		N	A/G 15

Carbon County

Zone 19 – North					
Chan. Num.	Channel Name	RX	Tone	TX	Tone
1	MB TAC	166.5500		166.5500	
2	BLMFIRE1	166.6375		166.6375	
3	VFIRE21	154.2800		154.2800	156.7
4	CCFD TAC2	155.6700		155.6700	
5	Mutual Aid	154.8750		154.8750	156.7
6	CF Elk	155.8050	100.0	158.7600	100.0
7	CF Main	155.8050	100.0	155.8050	100.0
8	SO Seperation	155.5200	107.2	154.6500	107.2
9	SO Chalk	155.8050	107.2	154.6500	151.4
10	BLM Sheep	168.2750		164.2500	136.5
11	BLM Elk	168.2750		164.2500	110.9
12	BLM Whiskey	168.2750		164.2500	146.2
13	A/G 10	166.9375		166.9375	
14	A/G 15	167.5250		167.5250	
15	VMED28	155.3400		155.3400	156.7
16	Air Guard	168.6250		168.6250	110.9

Zone 20 – South					
Chan. Num.	Channel Name	RX	Tone	TX	Tone
1	MB TAC	166.5500		166.5500	
2	BLMFIRE1	166.6375		166.6375	
3	VFIRE21	154.2800		154.2800	156.7
4	CCFD TAC2	155.6700		155.6700	
5	CF Blackhall	155.8050	100.0	158.7600	141.3
6	CF Ryan Park	155.8050	100.0	158.7600	123.0
7	CF Baggs	155.8050	100.0	158.7600	107.2
8	BLM Sheep	168.2750		164.2500	136.5
9	BLM Elk	168.2750		164.2500	110.9
10	FS Blackhall	171.7875	110.9	164.1500	131.8
11	FS Kennady	171.7875	110.9	164.1500	107.2
12	FS Bridger	171.7875	110.9	164.1500	114.8
13	A/G 10	166.9375		166.9375	
14	A/G 15	167.5250		167.5250	
15	VMED28	155.3400		155.3400	156.7
16	Air Guard	168.6250		168.6250	110.9

Zone 21 – Tactical					
Chan. Num.	Channel Name	RX	Tone	TX	Tone
1	MB TAC	166.5500		166.5500	
2	BLMFIRE1	166.6375		166.6375	
3	BLMFIRE2	166.8250		166.8250	
4	VFIRE21	154.2800		154.2800	156.7
5	CCFD TAC2	155.6700		155.6700	
6	Mutual Aid	154.8750		154.8750	156.7
7	CCFD Repeaters	155.8050		155.8050	User
8	CCSO Repeaters	155.5200	107.2	154.6500	User
9	BLM Repeaters	168.2750		164.2500	User
10	USFS Repeaters	171.7875	110.9	158.7600	User
11	Rawlins FD	155.0250		155.0250	
12	Rawlins TAC	154.2650		154.2650	
13	A/G 10	166.9375		166.9375	
14	A/G 15	167.5250		167.5250	
15	VMED28	155.3400		155.3400	156.7
16	Air Guard	168.6250		168.6250	110.9

Glossary of Terms

Term	Definitions
Agency	An administrative division of a government with a specific function, or a non-governmental organization (e.g., private contractor, business, etc.) that offers a particular kind of assistance. A federal, tribal, state or local agency that has direct fire management or land management responsibilities or that has programs and activities that support fire management activities.
Agency Administrator	The official responsible for the management of a geographic unit or functional area. The managing officer of an agency, division thereof, or jurisdiction having statutory responsibility for incident mitigation and management. Examples: NPS Park Superintendent, BIA Agency Superintendent, USFS Forest Supervisor, BLM District Manager, FWS Refuge Manager, State Forest Officer, Tribal Chairperson, Fire Chief, Police Chief.
Area of Critical Environmental Concern (ACEC)	An area of public lands where special management attention is required to protect and prevent irreparable damage to important historic, cultural, or scenic values, fish, and wildlife resources, or other natural system or processes, or to protect life or provide safety from natural hazards.
BLM	Bureau of Land Management
BOR	Bureau of Reclamation
County and local fire service Entities	County Fire Organizations, City Fire Organizations, Joint Powers Boards, or Fire Protection Districts.
Entities (Entity)	All Federal agencies, Wyoming State Forestry Division, counties, fire districts and local fire service organizations having jurisdictional responsibility for land and resource management and protection.
Escaped Prescribed Fire	Prescribed fire that has exceeded or is expected to exceed prescription parameters or otherwise meets the criteria for conversion to wildfire. Criteria for conversion are specified in, "Interagency Prescribed Fire-Planning and Implementation Procedures Reference Guide."

Extended Attack	Actions taken on a wildfire that has exceeded the initial response.
Initial Attack (IA)	A preplanned response to a wildfire given the wildfire's potential. Initial attack may include size up, patrolling, monitoring, holding action or suppression.
Jurisdictional Entity	The Entity which has overall land and resource management, and/or protection responsibility as provided by Federal, State, or local law.
Line Officer	Managing officer, or designee, of the agency, division thereof, or jurisdiction having statutory responsibility for incident mitigation and management.
Prescribed Fire	Any fire intentionally ignited by management actions in accordance with applicable laws, policies, and regulations to meet specific objectives.
Protecting Entity	An entity responsible for providing direct incident management within a specific geographical area pursuant to its jurisdictional responsibility or as specified and provided by contract, cooperative agreement, etc.
Protection Area Maps	Official maps of the annual operating plans. Example: Maps showing protection area responsibilities.
Reciprocal Fire Protection	A Supporting Entity will take initial attack in support of the Protecting Entity. The Protecting Entity will not be required to reimburse the Supporting Entity for costs incurred following the initial dispatch of any ground resources to the fire for the duration of the reciprocal period as defined in this plan, not to exceed 24 hours.
Reimbursable Fire Protection	Fire suppression resources will be paid for by the requesting Protecting Entity per the conditions in the Wyoming Interagency Fire Management Agreement, Wyoming Interagency Cooperative Fire Management Agreement and this Annual Operating Plan.
Research Natural Area (RNA)	A physical or biological unit in which current natural conditions are maintained insofar as possible. These conditions are ordinarily achieved by allowing natural, physical and biological processes to prevail without human intervention. However, under unusual circumstances, deliberate manipulation may be utilized to maintain the unique feature that the Research Natural Area was established to protect.

State Lands	All lands under the jurisdiction of the Board of Land Commissioners.
State Park Lands	All lands under the jurisdiction of Wyoming State Parks, Historic Sites & Trails.
Structure Fire Protection	The protection of homes or other structures from an active wildland fire.
Supporting Entity	An entity providing suppression or other support and resource assistance to a Protecting Entity.
Suppression	A wildfire response strategy to "put the fire out", as efficiently and effectively as possible, while providing for firefighter and public safety.
Unit Administrator Group	A group consisting of all Jurisdictional Entities, consisting of two or more individuals assigned administrative responsibilities, to make coordinating decisions and recommendations within the framework of the Annual Operating Plan.
Wildfire	An unplanned, unwanted wildland fire including unauthorized human-caused fires, escaped wildland fire use events, escaped prescribed fire projects, and all other wildland fires where the objective is to put the fire out.
Wildland Fire	Any non-structure fire that occurs in vegetation or natural fuels. Wildland fire includes prescribed fire and wildfire.
Wildland Fire (Unplanned Ignition)	Any non-structure fire, other than prescribed fire, that occurs in the wildland.
Wildland Fire Decision Support System (WFDSS)	The Wildland Fire Decision Support System (WFDSS) is a web-based decision support system that provides a single dynamic documentation system for use beginning at the time of discovery and concluding when the fire is declared out. WFDSS is the decision support documentation platform for all federal wildfires. WFDSS allows the Agency Administrator to describe and assess the fire Situation, develop Incident Objectives and Requirements, develop a Course of Action, evaluate Relative Risk, complete an Organization Assessment, document the Rationale and publish a Decision.

<u>Wildland Fire Situation Analysis (WFSa)</u>	A decision making process that evaluates alternative management strategies against selected safety, environmental, social, economical, political, and resource management objectives as selection criteria.
<u>Wilderness Study Area (WSA)</u>	An area under study for possible inclusion as a Wilderness Area in the National Wilderness Preservation System. These areas are roadless, undeveloped, federal lands that retain their primeval character and influence, without permanent improvements or human habitation, and are managed to preserve their natural conditions.
<u>Wildland Urban Interface (WUI)</u>	The line, area, or zone where structures and other human development meet or intermingle with undeveloped wildland or vegetative fuels. Describes an area within or adjacent to private and public property where mitigation actions can prevent damage or loss from wildfire.
<p>Wyoming Greater Sage-Grouse (GRSG)</p> <p><i>*These terms and definitions were pulled directly out of the:</i></p> <p>Wyoming Greater Sage-Grouse RMP/LRMP Amendments</p>	<p><i>Core Habitat:</i> Sage-grouse core habitat (as defined in the WY EO 2015-4) is one of two components of Sage-grouse Priority Habitat Management Areas. Core habitats are state-designated areas identified as the most important for GRSG (Greater Sage-Grouse) and include breeding, late brood-rearing, winter concentration areas. It does not include known, migration or connectivity corridors. Sage-grouse core habitat plus connectivity habitat together make up Sage-grouse Priority Habitat Management Areas.</p> <p><i>General Habitat Management Areas:</i> Occupied (seasonal or year-round) habitat outside of priority habitat. These areas have been identified by the BLM in coordination with respective state wildlife agencies.</p> <p><i>Priority Habitat Management Area:</i> Sage-grouse priority habitats are areas that have the highest conservation value to maintaining or increasing Sage-grouse populations. These areas would include breeding, late brood-rearing, winter concentration areas, and where known, migration or connectivity corridors. Sage-grouse Priority Habitat Management Area includes core plus connectivity habitat.</p>