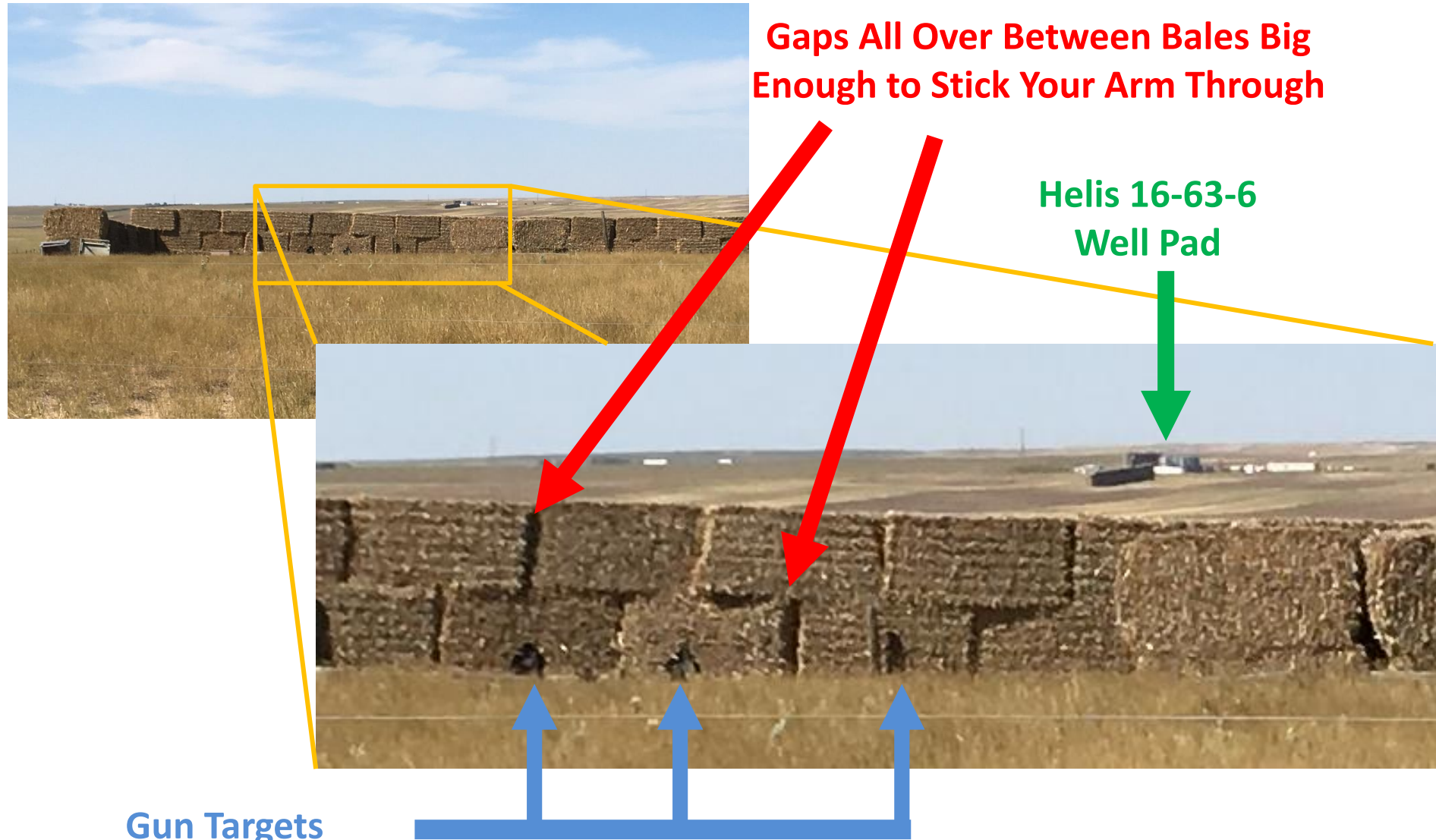


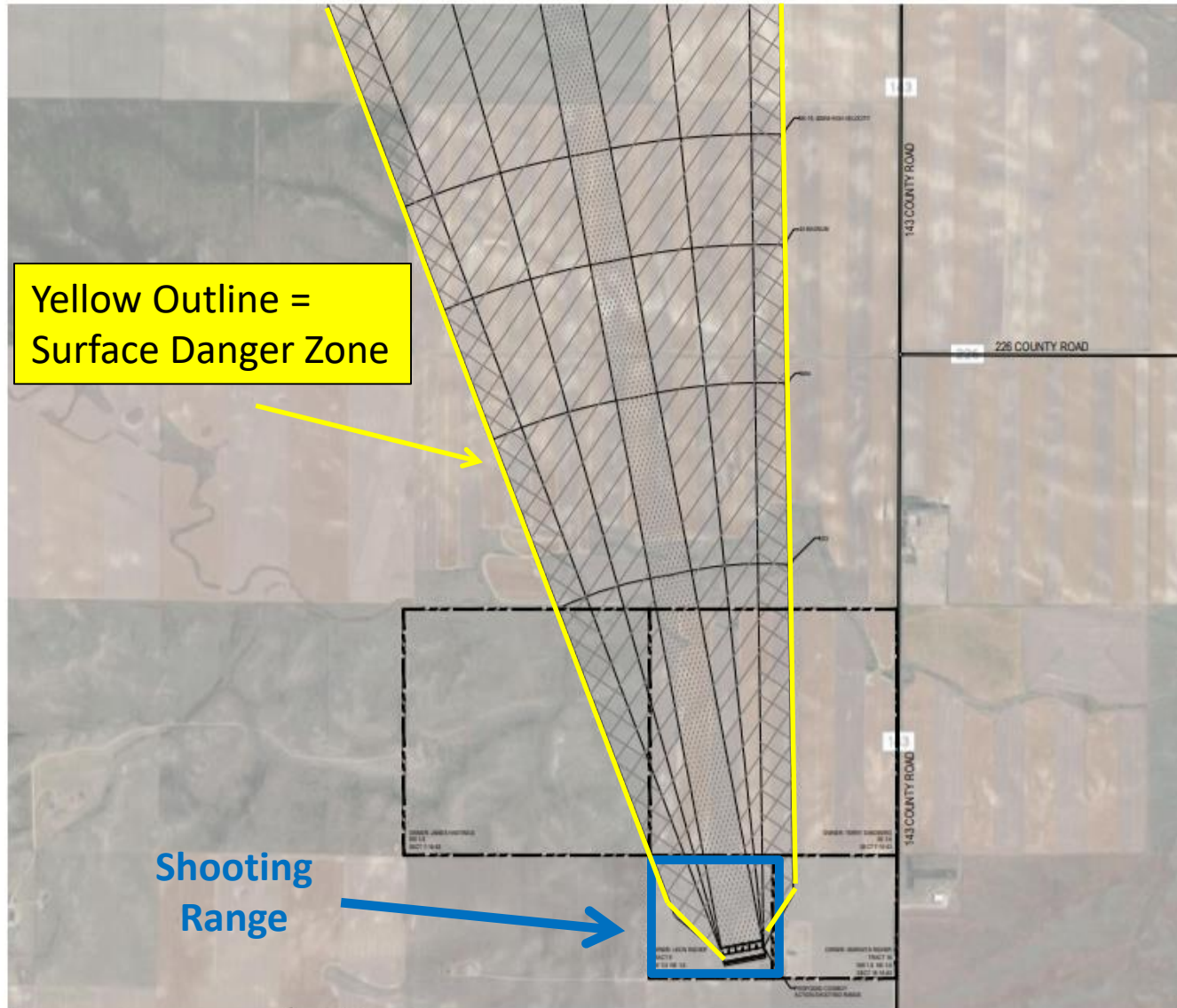
**Gaps All Over Between Bales Big
Enough to Stick Your Arm Through**

**Helis 16-63-6
Well Pad**

Gun Targets



Shooting Range Design Expert RD Design Works Ballistics Trajectory Map



Yellow Outline =
Surface Danger Zone

Shooting
Range

EXISTING BALLISTICS PROGRAM			
Caliber	Impact media	Under 100'	100'
12 gauge slug	Earth/Vol	1372	138
	Steel/Concrete	1372	181
12 cal Long Rifle, M&A	Earth/Vol	1400	36
	Steel/Concrete	1400	28
30 cal 06A1 Bul	Earth/Vol	1500	58
	Steel/Concrete	1500	28
3000 0002 Bul	Earth/Vol	1500	13
	Steel/Concrete	1500	28
40 cal M107 1 P&G/2000	Earth/Vol	1500	120
	Steel/Concrete	1500	180
6.50mm, 0700 Bul	Earth/Vol	2100	27
	Steel/Concrete	2100	27
6.50mm, 0700	Earth/Vol	2100	27
	Steel/Concrete	2100	27
Total	Earth/Vol	3407	120
	Steel/Concrete	3407	120
6.50mm, 0000 Bul	Earth/Vol	3000	27
	Steel/Concrete	3000	27
6.50mm, 0000	Earth/Vol	3000	27
	Steel/Concrete	3000	27
6.50mm, 0000	Earth/Vol	250	18
	Steel/Concrete	250	8
7.62mm, 0018	Earth/Vol	5000	170
	Steel/Concrete	5000	170
7.62mm, 0018	Earth/Vol	4700	170
	Steel/Concrete	4700	170
30 cal, 0000 Bul	Earth/Vol	4700	170
	Steel/Concrete	4700	170
30 cal, M100 Bul, Phase	Earth/Vol	170	4
	Steel/Concrete	170	4
30 cal, M100 Tracer, Phase	Earth/Vol	170	4
	Steel/Concrete	170	4
30 cal M2 AP	Earth/Vol	6100	40
	Steel/Concrete	6100	40
30 cal M2 Bul	Earth/Vol	6000	30
	Steel/Concrete	6000	30
20mm, M200 30-T	Air	3000	17
	Water	3000	17
20mm, M552 30-T	Air	4000	17
	Water	4000	17
20mm, M552 30-T	Air	4000	17
	Water	4000	17
30mm, M100 30-T	Air	4000	17
	Water	4000	17
30mm, M100 30-T	Air	4000	17
	Water	4000	17

SURFACE DANGER ZONE ANALYSIS

THIS ANALYSIS DETERMINES THE TRAJECTORY OF VARIOUS AMMUNITION FIRED FROM THE PROPOSED SHOOTING RANGE. THE ANALYSIS IS BASED ON THE PROPOSED SHOOTING RANGE. THE ANALYSIS IS BASED ON THE PROPOSED SHOOTING RANGE. THE ANALYSIS IS BASED ON THE PROPOSED SHOOTING RANGE.

LEGEND	
SYM	
	IMPACT AREA (DIRECT FIRE ZONE)
	BOCCHET AREA
	SECONDARY TARGET ZONE



**DESIGN
WORKS**

COMB COUNTY:
1400 Shook Road NW
Suite 3000
Kennesaw, GA 30144
Phone 770.790.3655
Fax 770.790.3655

FANNIN COUNTY:
722 Black Dog Trail
P.O. Box 639
Blue Ridge, GA 30513
Phone 706.374.4304

LARAMIE COUNTY CONBOY ACTION SHOOTING RANGE

SURFACE DANGER ZONE (SDZ)

TERRY SANDBERG GUN RANGE

4276 CALICO HILL RANCH RD
BURNS, WY 82803

TITLE

PROJECT

ISSUE

REVISIONS

SEAL

DRAWN BY:

DATE:

PROJECT NO.

SHEET NO.

1808

A-0.1

Copyright © 2018
RD Design Works

COWBOY ACTION SHOOTING™

SHOOTER'S HANDBOOK



Version 22.3

November 2017

COPYRIGHT 1987 – 2017

SINGLE ACTION SHOOTING SOCIETY, INC.

ALL RIGHTS RESERVED

Rifle Calibers Page 39 of SASS Handbook:

- Must be centerfire of at least .32 caliber and not larger than .45 caliber.
- Must be in a caliber commonly available in revolvers. Examples include, but are not limited to, .32-20, .32 Magnum, .357 Magnum, .38 Special, .38-40, .44-40, .44 Special, .44 Magnum, and .45 Colt. The only allowed exceptions are the .25-20 and .56-50. No rifle calibers such as .30-30 or .38-55 are allowed.
- Buckaroo/Buckarett Category competitors choosing to utilize .22 caliber firearms must use standard velocity .22 caliber rim-fire ammunition only.

These Guns Qualify

Revolver Calibers Page 37 of SASS Handbook:

- Must be centerfire calibers of at least .32 caliber and no larger than .45 caliber or percussion calibers of at least .36 caliber and no larger than .45 caliber.
- Must be in a caliber commonly available in revolvers. Examples include, but are not limited to, .32-20, .32 Magnum, .357 Magnum, .38 Special, .44 Magnum, .44-40, and .45 Colt.

These Guns Qualify

Page 25 of SASS Handbook:

The maximum velocities are 1000 fps for revolvers and 1400 fps for rifles. Ammunition that exceeds these velocities is considered illegal (this does not include ammunition that does not meet the power factor). Pocket pistols, derringers, and long-range rifles are exempt from the power factor and velocity requirements.

Oil Wells Inside Direct Line of Fire

**Yellow Outline =
Surface Danger Zone**

**.44 REM MAG
.357 MAGNUM**

**Red Outline =
Property Owned
By Terry and
Joanne Sandberg**

**Shooting
Range**

