

# WHITNEY ROAD CORRIDOR PLAN



Laramie County Commissioners  
October 6, 2020



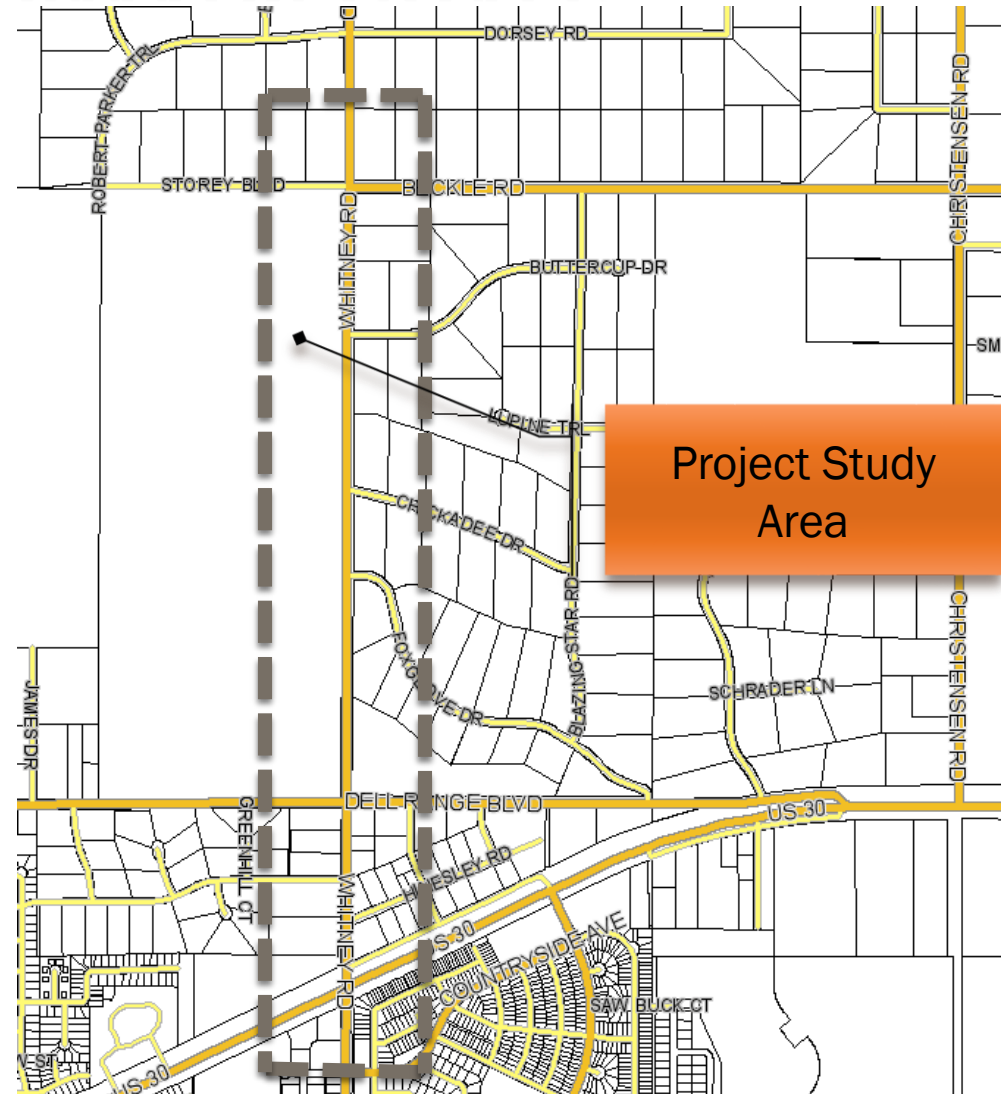
# STUDY AREA AND PRIMARY GOALS

## ✘ Limits

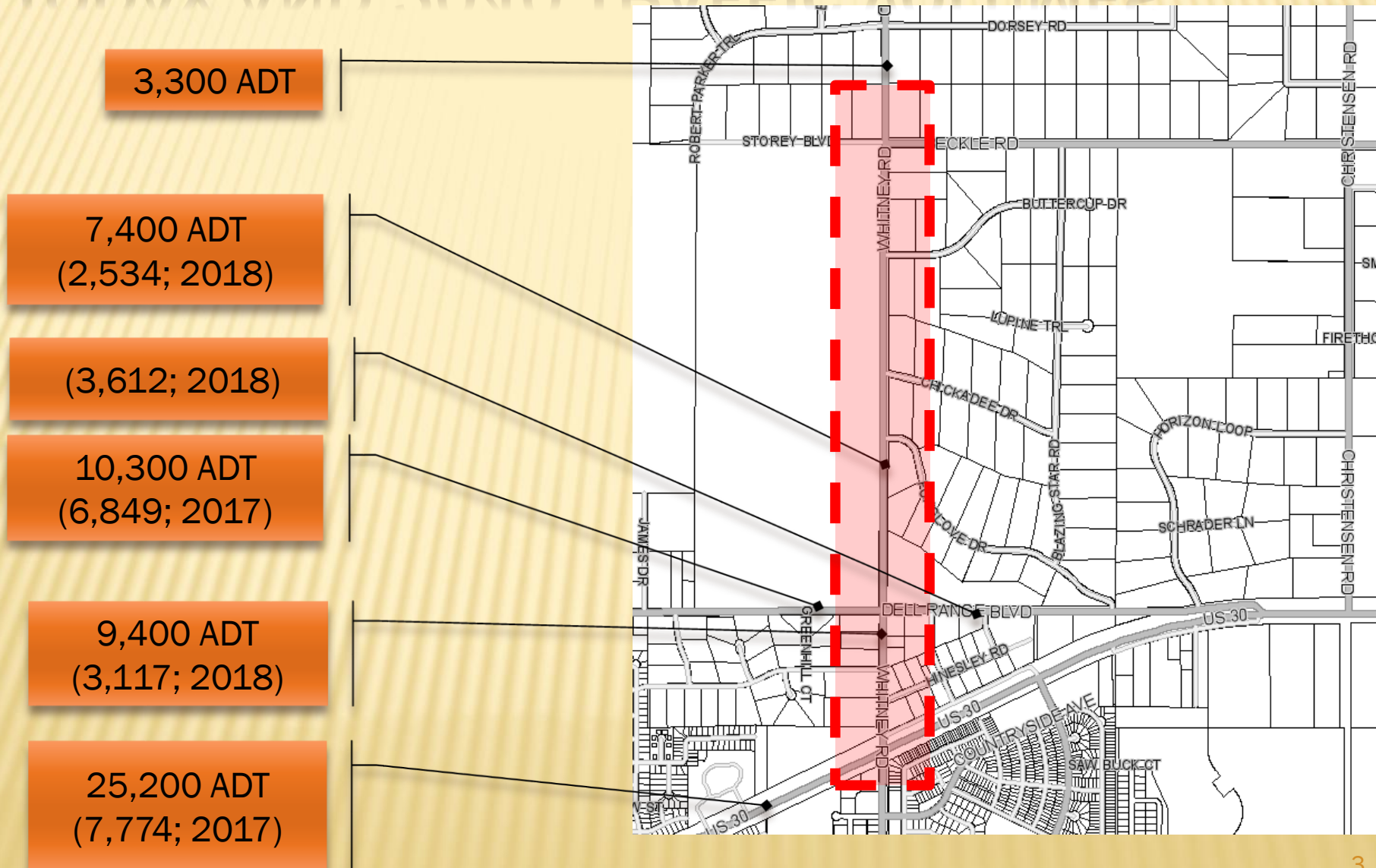
- + Northern Limit – Storey Blvd./ Beckle Road
- + Southern Limit – U.S. 30

## ✘ Primary Goals

- + Understand the community and neighborhood vision for the roadway
- + Improve roadway and intersection safety and function
- + Address drainage and snow drifting



# TODAY AND 2040 TRAFFIC VOLUMES





# CRASH DATA

## ✘ Intersection Crash Data (January 2014 to September 2017)

Whitney Road / US 30		Whitney Road / Dell Range Boulevard		Whitney Road / Beckle Road	
Type	Number	Type	Number	Type	Number
Angle	5	Angle	5	Angle	0
Rear End	3	Rear End	0	Rear End	1
Fixed Object	3	Fixed Object	0	Fixed Object	0
<b>Total</b>	<b>11</b>	<b>Total</b>	<b>5</b>	<b>Total</b>	<b>1</b>
<b>Rate</b>	<b>0.88</b>	<b>Rate</b>	<b>0.50</b>	<b>Rate</b>	<b>0.33</b>

Crash rates are expressed in crashes per million entering vehicles.

### Severity

Property Damage	9	Property Damage	3	Property Damage	1
Injury	2	Injury	1	Injury	0
Fatality	0	<b>Fatality</b>	<b>1</b>	Fatality	0
<b>Total</b>	<b>11</b>	<b>Total</b>	<b>5</b>	<b>Total</b>	<b>1</b>

### Cause

Failure to Yield ROW	5	<b>Failure to Yield ROW</b>	<b>5</b>	Failure to Yield ROW	0
Following too Closely	2	Following too Closely	0	Following too Closely	1
Speeding	1	Speeding	0	Speeding	0
Drove too Fast for Conditions	3	Drove too Fast for Conditions	0	Drove too Fast for Conditions	0
<b>Total</b>	<b>11</b>	<b>Total</b>	<b>5</b>	<b>Total</b>	<b>1</b>

# WHERE WE HAVE BEEN AND WHAT TO EXPECT?

## Public Outreach Matrix

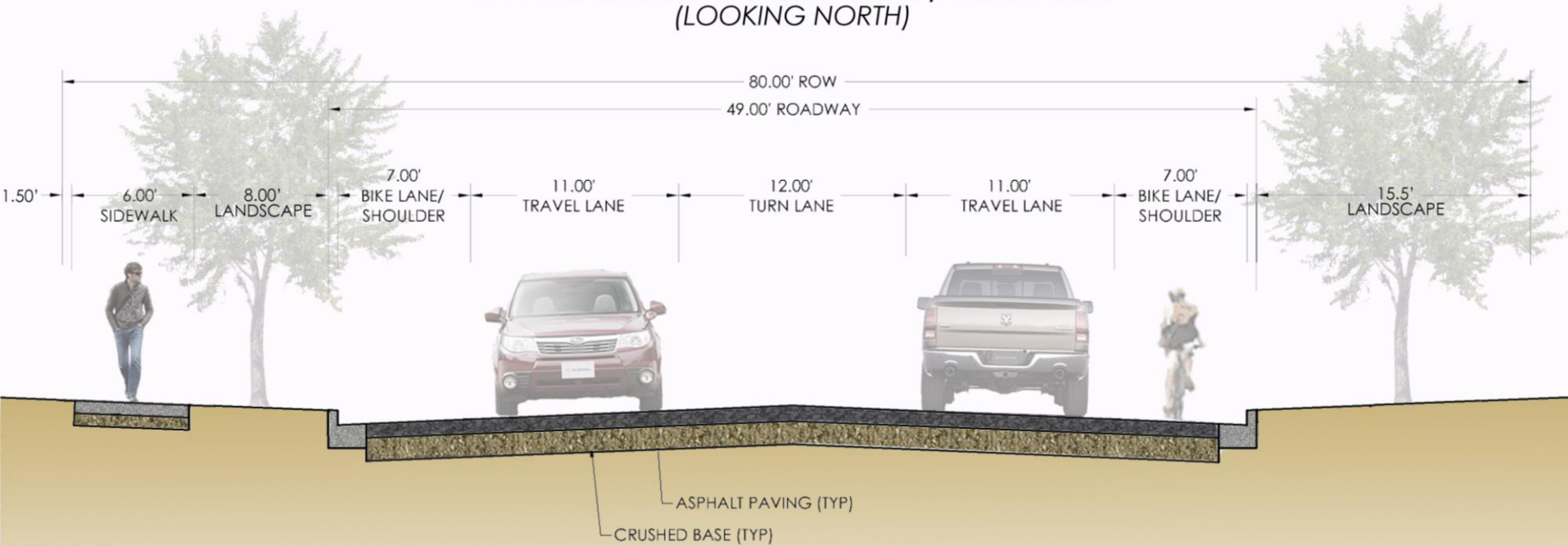
- ✘ September 21  
City Planning Commission  
Public Hearing
- ✘ September 24  
County Planning  
Commission Public Hearing
- ✘ September 28  
Introduced to City Governing  
Body
- ✘ October 6  
City Public Service  
Committee
- ✘ October 6  
County Commission Meeting
- ✘ October 12  
City Final Governing Body
- ✘ October tbd  
MPO Policy Committee Final  
Special Meeting

Activity	Date(s)
<b>Steering Committee (2)</b>	5.09.2017 10.19.2017 2.13.2019
<b>Public Open House (2)</b>	11.08.2017 6.28.2018
<b>Individual One-on-one Meetings (12)</b>	5.07.2018 8.08.2018 & 8.09.2018 10.30.2018 & 10.31.2018 11.13.2018 & 11.16.2018 1.15.2019 3.11.2019 & 3.12.2019 4.23.2019 5.02.2019
<b>Utility Meetings:</b> Suncor Energy USA Pipeline Plains All American Pipeline	5.09.2017 6.23.2018
<b>MPO Technical Advisory Committee (TAC) (6)</b>	9.12.2018 11.14.2018 3.13.2019 5.15.2019 8.15.2019
<b>MPO Citizen's Advisory Committee (CAC) (3)</b>	9.12.2018 5.15.2019 8.15.2019
<b>Planning Commissions</b>	
City of Cheyenne	12.12.2018 7.15.2019
Laramie County	12.19.2018 7.11.2019
<b>Governing Bodies (2)</b>	
City Council	TBD
County Commissioners	TBD

# RECOMMENDED TYPICAL SECTIONS

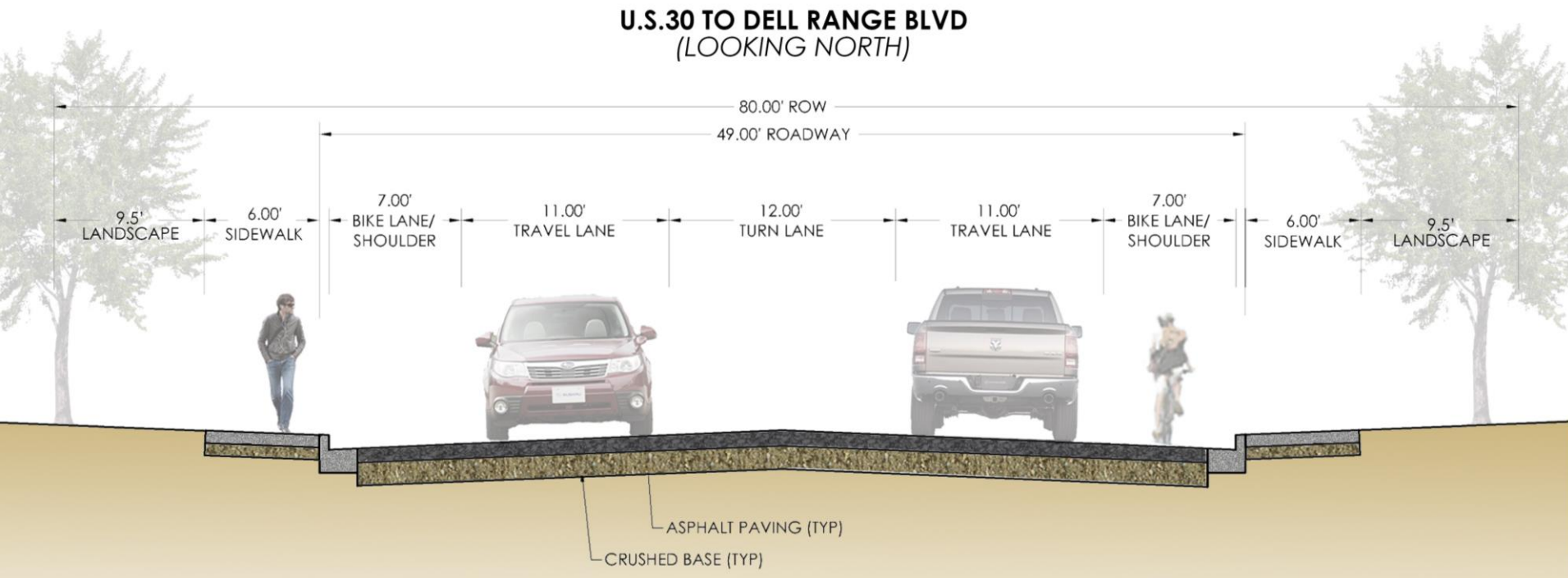
- ✘ Dell Range Blvd. to Beckle Road (Looking North)
  - + Urban 3 – Lane Roadway Typical Section (Special)

DELL RANGE BLVD TO BECKLE ROAD / STOREY BLVD  
(LOOKING NORTH)



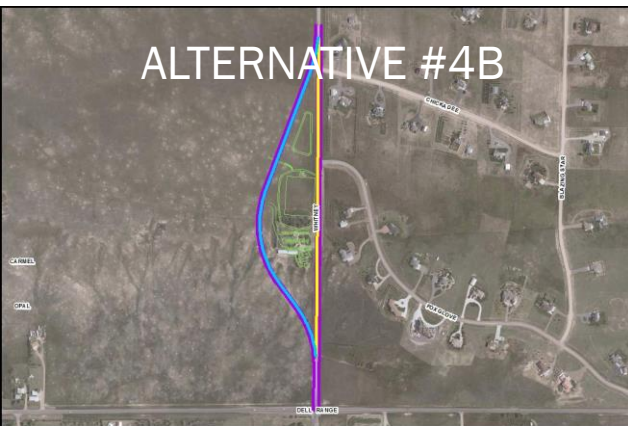
# RECOMMENDED TYPICAL SECTIONS

- ✘ U.S. 30 to Dell Range Blvd.
- + Urban 3 – Lane Roadway Typical Section





# WHITNEY RANCH REIMAGINED

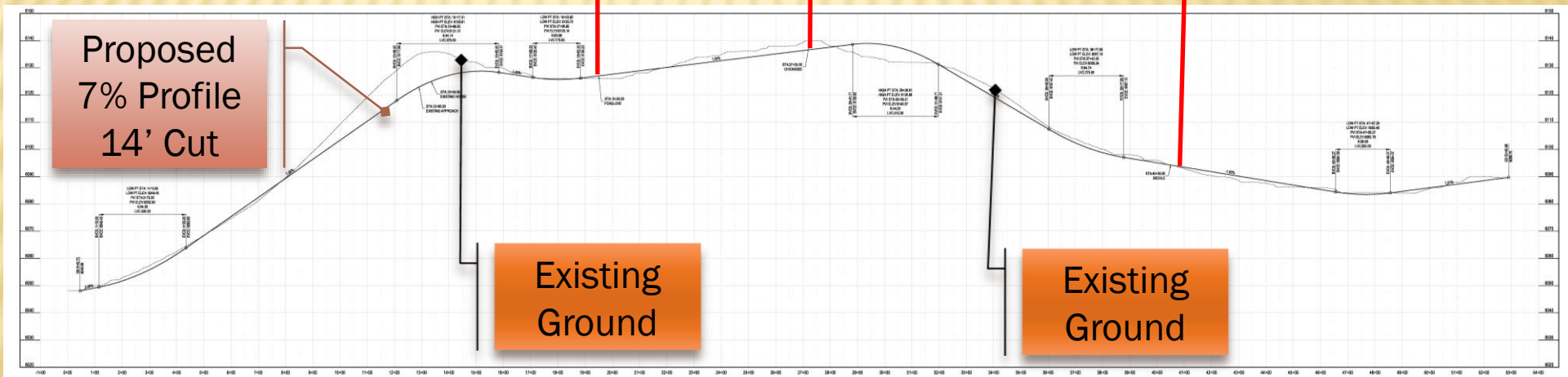




# WHITNEY RANCH



Proposed  
7% Profile  
14' Cut



# GENERAL CORRIDOR RECOMMENDATIONS

## Short Term Plan Implementation

Action / Goal	Specific Tasks	Roles & Responsibilities	Time Frame	
Interim Safety Improvements Whitney Road at Dell Range Blvd.	1	Install larger Stop Signs (30" x 30" to 36 x 36 or 48 x 48)	Laramie County	Now
	2	Install Stop Bars on Whitney Road at Dell Range Blvd.	Laramie County	Now
	3	Install Stop Bars on Dell Range Blvd.	Laramie County	Now
	4	Install solar powered Flashing Beacon on Stop Signs at Dell Range Blvd.	Laramie County	Near
	5	Install Intersection Down Lighting on Existing Power Poles at Dell Range Blvd.	Laramie County/ City of Cheyenne	Near
Interim Safety Improvements Whitney Road at U.S. 30	1	Install larger Stop Signs (30" x 30" to 36 x 36 or 48 x 48)	WYDOT	Complete
	2	Install Stop Bar pavement markings on Whitney Road	WYDOT/ City of Cheyenne	Complete
	3	Install Flashing Beacon for Stop Control and Warning	WYDOT	Complete
	4	Remove pedestrian refuge median for improved stacking	City of Cheyenne	Complete
	5	Widen EB to SB auxiliary turn to improve visibility and remove "ghosting" effect	WYDOT	Complete
	6	Extend center pavement markings on the north leg of the intersection at U.S. 30	Laramie County WYDOT	Now
	7	Relocate pedestrian greenway crossing until intersection is reconstructed	City of Cheyenne	Mid

# GENERAL CORRIDOR RECOMMENDATIONS

## Long Term Plan Implementation

Action / Goal	Specific Tasks	Roles & Responsibilities	Time Frame	
	1	Implement Construction Phased Strategies along the Corridor	Laramie County City of Cheyenne	Mid to Long
	2	Install Uniform Roadway and Pedestrian Lighting	Laramie County City of Cheyenne	Long
	3	Investigate Possible Posted Speed Reduction <ul style="list-style-type: none"> <li>a. U.S. 30 East West of Whitney (Pershing to Christensen Road) from 55 mph to 45 mph</li> <li>b. Whitney Road from Storey Blvd. from 45 mph to 30 mph</li> </ul>	Laramie County WYDOT	Mid
	4	Implement wet and dry utility priority projects as funding resources become available or development becomes the catalyst.	City of Cheyenne BOPU	Mid
	5	Develop/ Create additional egress/ access routes north of Dell Range (i.e. Storey Blvd. West, Four Mile, Riding Club)	Laramie County/ City of Cheyenne	Mid to Long
	6	Reserve and/ or purchase right-of-way as development occurs along the undeveloped corridor.	Laramie County/ City of Cheyenne	Near, Mid, Long
	7	Explore opportunities, as area develops, to provide roadway storm water detention / retention features / facilities.	Laramie County/ City of Cheyenne	Near, Mid, and Long
	8	Explore public/ private partnerships to implement	Laramie County/ City of Cheyenne	Near, Mid, and Long



# WHITNEY ROAD AT DELL RANGE BLVD.



- ✘ Alternative 1
  - + Standard Signalized Intersection

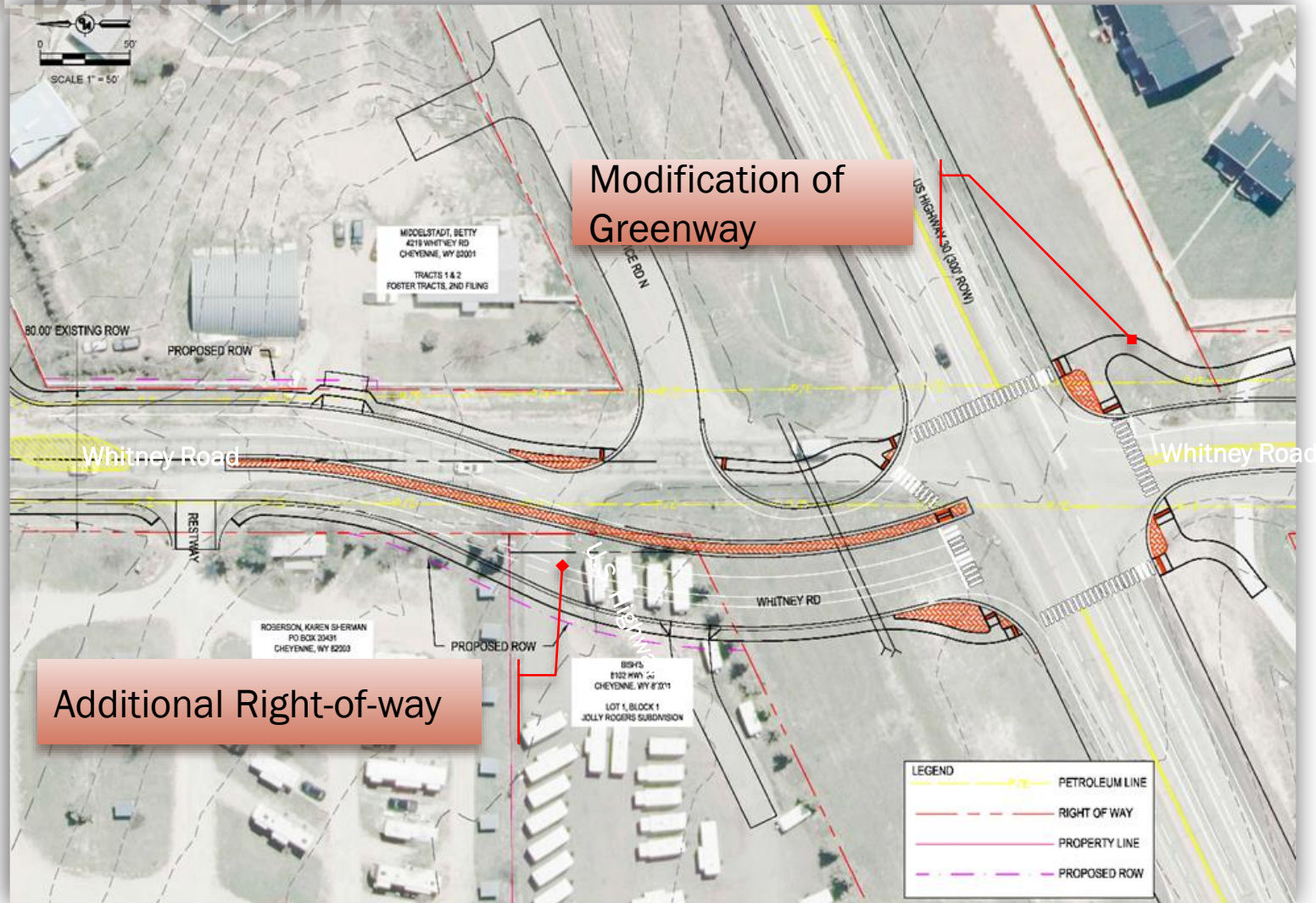


- ✘ Alternative 2
  - + Single Lane RAB





# RECOMMENDED ALTERNATIVE – REALIGN INTERSECTION





# ESTIMATED COSTS

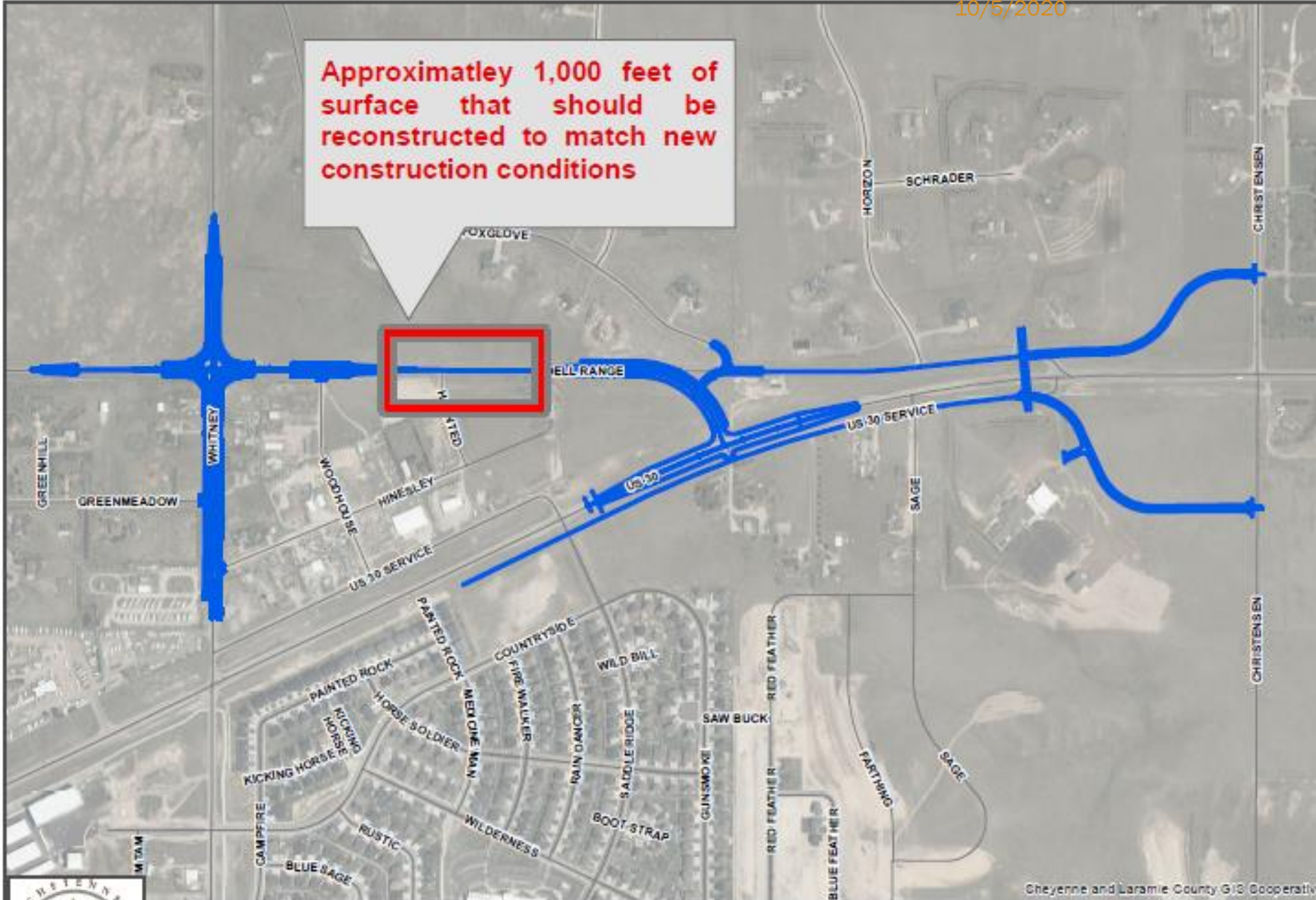
Description of Area	Estimated Costs					
	Construction	Right-of-way	Engineering	Contingency	Total	For Estimate
Whitney Road at Dell Range Blvd. Intersection (RAB)	\$ 1,010,036	\$ 47,853	\$ 101,004	\$ 151,505	\$ 1,310,398	<b>\$ 1,320,000</b>
Dell Range Blvd. to U.S. 30	\$ 1,245,878	\$ 108,070	\$ 124,588	\$ 249,176	\$ 1,727,712	<b>\$ 1,730,000</b>
<b>Sub-total Phase I</b>	\$ 2,255,913	\$ 155,924	\$ 225,592	\$ 400,681	\$ 3,038,110	<b>\$ 3,050,000</b>
Storey Blvd. to Dell Range Blvd.	\$ 244,625	\$ -	\$ 3,190,000	\$ 244,625	\$ 3,679,250	<b>\$ 3,680,000</b>
<b>Whitney Road Totals</b>						<b>\$6,730,000.00</b>

# FINAL THOUGHTS

---

- ✘ **Collaborative** effort with input of over 250+ people including professionals, users, property owners, business owners, and other stakeholders
- ✘ Provides recommendations that attempt to balance the needs of **all** the users of roadway
- ✘ Provides a vision and framework for the corridor for year 2040 and is **not** a construction document
- ✘ Purpose of the plan is to be guide document for short- and long-term development of the area. The final plan is dynamic and should be updated to reflect future changes not seen at this time.
- ✘ And.....

Approximatley 1,000 feet of surface that should be reconstructed to match new construction conditions



# Dell Range Reconstruction

- CAD Preliminary Plans
- Street Centerlines



CHEYENNE  
LARAMIE  
COUNTY  
GIS

Cheyenne and Laramie County GIS Cooperative

This map data is made possible through the Cheyenne and Laramie County Cooperative GIS (CLOGGIS) Program and is for display purposes only. The CLOGGIS invokes its sovereign and governmental immunity in allowing access to or use of this data.