

RESOLUTION NO.

CONSIDERATION OF A RESOLUTION AUTHORIZING THE RATIFIED SUBMISSION OF A GRANT APPLICATION TO THE WYOMING STATE FORESTRY DIVISION, URBAN AND COMMUNITY FORESTRY PROGRAM FOR A 2025 INFLATION REDUCTION ACT (IRA) GRANT IN THE AMOUNT OF \$100,000.00, ON BEHALF OF THE GOVERNING BODY OF LARAMIE COUNTY, WYOMING.

FOR THE PURPOSE OF: REQUESTED FUNDS WILL BE USED TO PURCHASE NINETY-THREE TREES ALONG WITH THE REMOVAL OF UP TO THREE LARGE TREES AT CLEAR CREEK PARK.

WITNESSETH

WHEREAS, the Governing Body of Laramie County desires to participate in the 2025 Wyoming State Forestry Division, Urban and Community Forestry Program Inflation Reduction Act by sponsoring this grant application to assist in financing this project; and

WHEREAS, the Governing Body of Laramie County has been provided with preliminary cost estimates and information on this project; and

NOW, THEREFORE, BE IT RESOLVED BY THE GOVERNING BODY OF LARAMIE COUNTY that a grant application in the amount of \$100,000.00 be submitted to the Wyoming State Forestry Division, Urban and Community Forestry Program for consideration of funding for the purchase of up to ninety-three trees to be located at Clear Creek Park along with the removal of two to three large trees.

BE IT FURTHER RESOLVED, that Sandra Bay, or her successor in the position of Laramie County Grants Manager, is appointed as agent of the Laramie County Board of Commissioners to execute and submit applications and certifications for these funds and to receive funds and implement the programs funded under this grant.

PASSED, APPROVED AND ADOPTED THIS 6th DAY OF JANUARY 2026.

By: _____
Chairman Laramie County Commissioners


Date: _____

ATTEST:

Debra Lee, Laramie County Clerk

Date: _____

Received and Approved as to Form only By:



Laramie County Attorney's Office

Date: 12/17/25

2025 WYOMING URBAN AND COMMUNITY FORESTRY PROGRAM
IRA PROJECT APPLICATION

1. **NAME OF PROJECT:** Clear Creek Park - 93 Tree Enhancement Project
 2. **PROJECT LOCATION or COMMUNITY:** Clear Creek Park, 251 Southwest Drive, Cheyenne, Wyoming 82007
 3. **SPONSORING AUTHORITY or ORGANIZATION:** Laramie County, Wyoming
 4. **PROJECT COORDINATOR:** John Poelma
 5. **MAILING ADDRESS:** 13797 Prairie Center Circle, Cheyenne, Wyoming 82009
 6. **PHONE:** 307-633-4302
 7. **DOES YOUR COMMUNITY/ORGANIZATION HAVE A GRANTS MANAGER? YES/NO**
IF SO, PROVIDE CONTACT INFORMATION.
 - 7A. **GRANTS MANAGER NAME:** Sandra Bay
 - 7B. **EMAIL:** sandra.bay@laramiecountwy.gov
 - 7C. **PHONE:** 307-633-4201
 - 7D. **MAILING ADDRESS:** 310 West 19th Street, Suite 410, Cheyenne, Wyoming 82001
 8. **PLANNED DATE OF PROJECT COMPLETION:** November 1, 2026
 9. **PROJECT NAME AND DESCRIPTION and/or PURPOSE:** The "Clear Creek Park - 93 Tree Enhancement Project," will plant 93 trees to replace lost or aging trees and expand the canopy with new trees in designated areas. The project supports the Inflation Reduction Act of 2025 by improving access to urban forestry benefits for underserved populations. Community members will participate in planting and ongoing stewardship to build capacity. The initiative strengthens climate resilience and delivers measurable environmental, social, and recreational benefits to the park and surrounding neighborhoods.
 10. **NUMBER OF TREES EXPECTED TO BE REMOVED/PRUNED/PLANTED:** 93 trees to be planted. This includes 49 shade trees, 38 ornamental trees, and 6 spruce trees.
 11. **WHO WILL BE RESPONSIBLE FOR AT LEAST FIVE YEARS OF MAINTENANCE?** Public Works, 13797 Prairie Center Circle, Cheyenne, Wyoming 82009. Please see attached maintenance plan.
 12. **NAMES OF VOLUNTEER GROUPS/PARTNERS INVOLVED IN THE PROJECT:** Laramie County Recreation Planning & Advisory Board.
 13. **PROJECT FUNDING:**
 - 13A. **REQUESTED URBAN & COMMUNITY FORESTRY GRANT FUNDS** \$100,000.00
 - 13B. **LOCAL CASH MATCH** \$0.00
 - 13C. **TOTAL PROJECT EXPENSE (A + B)** \$100,000.00
- ATTACH GRANT NARRATIVE, MAPS, AND A BUDGET WITH A BREAKDOWN OF ALL EXPECTED EXPENSES AND ALL PROJECTED INCOME INCLUDING GRANT FUNDS. (LIMIT OF 10 PAGES, EXCLUDING MAPS)**
14. **SIGNATURE OF PROJECT COORDINATOR:** John Poelma **DATE:** 12/17/2025

RETURN COMPLETED APPLICATION TO:
U&CF GRANTS
WYOMING STATE FORESTRY DIVISION
5500 Bishop Boulevard
CHEYENNE, WY 82002

INCOMPLETE APPLICATIONS WILL NOT BE
CONSIDERED FOR FUNDING

Wyoming Urban & Community Forestry – Inflation Reduction Act Grant (2025)

Grant Narrative:

Laramie County, Wyoming seeks funding through the Wyoming Urban and Community Forestry (UCF) 2025 Inflation Reduction Act (IRA) grant program to implement a large-scale tree planting project at Clear Creek Park, located at 251 Southwest Drive, Cheyenne, Wyoming. Clear Creek Park has been identified as a priority planting site due to its location within a low-income and underserved census tract and its limited existing environmental amenities. As such, 100 percent of the project benefits will directly serve an underserved community, aligning closely with IRA and Wyoming UCF priorities for equity, climate resilience, and environmental justice.

Clear Creek Park currently lacks adequate tree canopy to provide sufficient shade, cooling, wind protection, and other ecosystem services for park users. This project will address those gaps by planting approximately ninety-three (93) new trees, substantially increasing canopy cover and improving the environmental quality and usability of this public park. By implementing the planting as a single, concentrated effort rather than incrementally over time, the project will “jump-start” canopy development and deliver immediate and visible benefits to the surrounding community.

This project directly supports four core Urban and Community Forestry program goals:

1. Expanding and enhancing urban tree canopy, particularly in areas with limited existing canopy.
2. Promoting equitable distribution of environmental benefits to historically underserved and low-income neighborhoods.
3. Supporting climate resilience and adaptation through increased shade, improved air quality, carbon sequestration, and wind mitigation.
4. Enhancing community well-being and engagement through improvements to a highly visible, publicly accessible green space.

The accelerated planting of a large number of trees will provide numerous environmental and social benefits, including increased shade and cooling, reduced urban heat impacts, improved air quality, carbon sequestration, enhanced wildlife habitat, wind protection, stormwater interception, and improved park aesthetics. Clear Creek Park is open to the public and serves nearby residents, families, and visitors; increasing tree canopy will directly improve comfort, safety, and year-round usability of the park.

Urban Forestry estimates the cost of hiring professional planting services at approximately \$950–\$1,150 per tree for 2-inch caliper deciduous trees and 5-foot coniferous trees. This cost includes the purchase of nursery stock and all associated planting supplies, such as stakes, arbor ties, and mulch. The estimated total cost for tree purchase and installation is \$89,550, with the remaining

\$10,450 allocated for the removal of two to three large trees that are necessary to support safe planting locations, improve site conditions, and ensure long-term success of the new canopy.

As required by Laramie County procurement policies, three competitive estimates will be obtained from licensed landscapers or certified arborists. Final tree quantities and species selections will be confirmed upon vendor selection. Urban Forestry will ensure that all trees meet industry nursery stock standards and are planted in accordance with Wyoming tree planting guidelines.

Tree planting locations will be clearly identified in the field using painted white “X” markings and white pin flags and will correspond with mapped locations in Tree Plotter. The selected contractor will be required to complete utility locates for all planting locations and will be provided with detailed maps identifying planting areas and approved species. Trees will be planted in Spring 2026, with all work completed no later than November 1, 2026. Urban Forestry staff will inspect trees prior to planting and provide on-site oversight to ensure proper installation, mulching, and watering.

The project will include a diverse mix of native and climate-adapted deciduous and coniferous species selected for cold hardiness, drought tolerance, wind resistance, and long-term resilience in southeastern Wyoming. Species will be selected based on nursery availability and may include, but are not limited to:

- Cottonwood
- Bur Oak
- Willow
- Crabapple
- Chokecherry
- Prairie Gem Pear
- Colorado Blue Spruce
- Ponderosa Pine
- Austrian Pine

Tree diversity will reduce vulnerability to pests, disease, and climate stressors while strengthening the long-term health of the urban forest.

Long-term maintenance is a core component of this project. Laramie County Public Works and the Recreation Board will be responsible for ensuring adequate watering and care. Trees will be watered weekly during the growing season and hand-watered monthly during the dormant season for a minimum of five years. Hand watering will be conducted at a rate of at least 10 gallons per inch of caliper. All trees will be planted in areas served by automatic irrigation systems that will provide supplemental moisture throughout the life of the trees.

Trees will be inspected after the first year to determine whether staking materials can be removed; all remaining stakes will be removed no later than the end of the second year. Trees will be re-mulched with wood chips on a semi-annual basis, and vegetation within mulch rings will be managed annually using targeted herbicide application or other approved vegetation

management methods. Once established—typically within one to three years—trees will be evaluated for clearance and structural pruning and incorporated into a regular pruning rotation tracked through Tree Plotter. Any trees that fail will be replaced using Laramie County or Recreation Board funds.

Through careful planning, professional installation, and long-term maintenance commitments, this project will significantly enhance the urban forest of Clear Creek Park. The project will deliver immediate, measurable, and lasting environmental, social, and aesthetic benefits while fully supporting the objectives of the Wyoming Urban and Community Forestry Inflation Reduction Act grant program.

Budget Summary:

Budget Category	Description	IRA Funds Requested
Tree Purchase & Installation	Purchase and professional installation of approximately 93 trees (2" caliper deciduous and 5' coniferous), including stakes, arbor ties, mulch, and labor	\$89,550
Tree Removals (Site Preparation)	Removal of 2–3 large trees to improve safety, site conditions, and long-term success of new plantings	\$10,450
Total Project Cost		\$100,000

Budget Narrative & Justification:

Tree Purchase & Installation (\$89,550):

Professional planting services are estimated at \$950–\$1,150 per tree, which includes the cost of nursery stock and all necessary planting materials such as stakes, arbor ties, and mulch. Approximately 93 trees will be planted at Clear Creek Park in a single, coordinated planting effort to rapidly increase tree canopy in an underserved area. All trees will meet industry nursery stock standards and be planted in accordance with Wyoming tree planting guidelines. Competitive pricing will be ensured through Laramie County procurement requirements, including obtaining three estimates from licensed landscapers or certified arborists.

Tree Removals – Site Preparation (\$10,450):

Funds will be used to remove 2–3 large trees where necessary to address safety concerns, correct conflicts, and improve growing conditions for new trees. These removals are essential to support successful canopy expansion and long-term project sustainability.

Non-Grant Contributions (In-Kind):

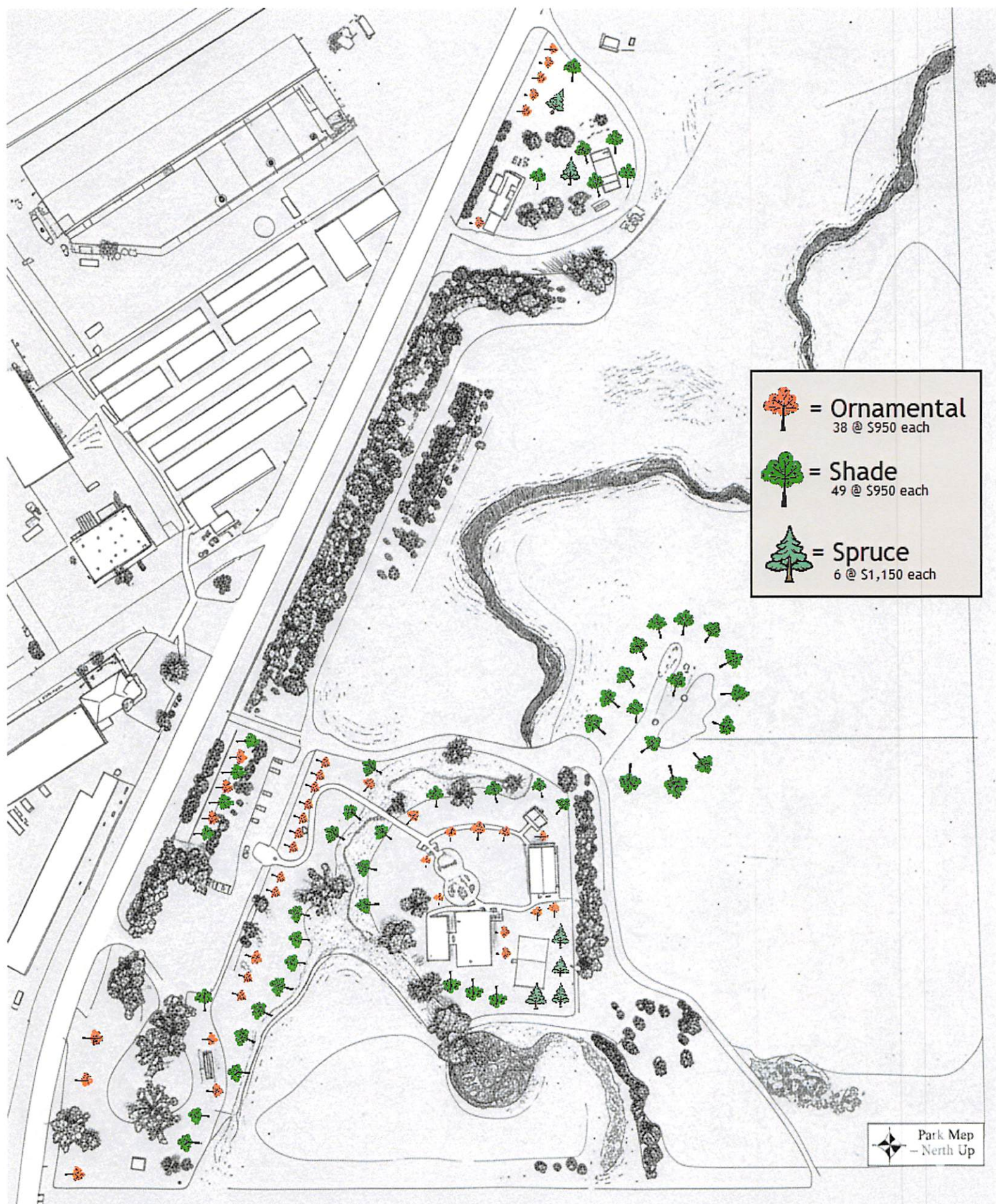
While no local cash match is requested, **Laramie County Public Works and the Recreation Board** will provide significant in-kind contributions, including:

- Site coordination and project oversight
- Weekly watering during the growing season and monthly hand watering during the dormant season for a minimum of five years
- Ongoing mulching, weed management, pruning, and tree inspections
- Replacement of any failed trees using County or Recreation Board funds


These in-kind services ensure long-term care, maximize the effectiveness of IRA funding, and demonstrate strong local commitment to project success.


Budget Notes:


- All work will comply with Laramie County procurement policies.
- Final tree quantities and species selections will be confirmed upon vendor award.
- All IRA funds will be used for eligible urban and community forestry activities in an underserved census tract, consistent with program requirements.



 = Ornamental
38 @ \$950 each

 = Shade
49 @ \$950 each

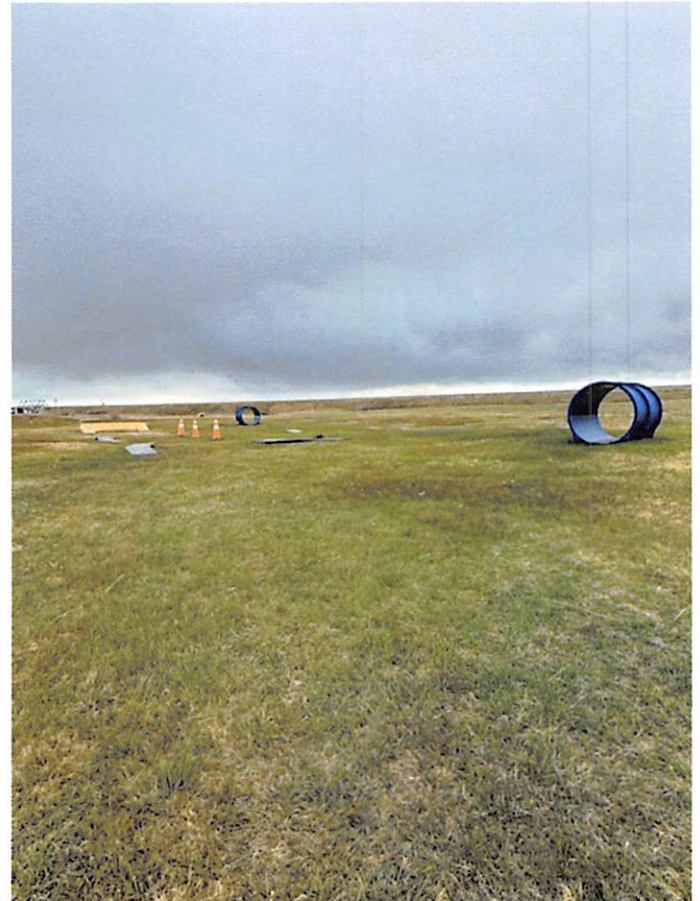
 = Spruce
6 @ \$1,150 each

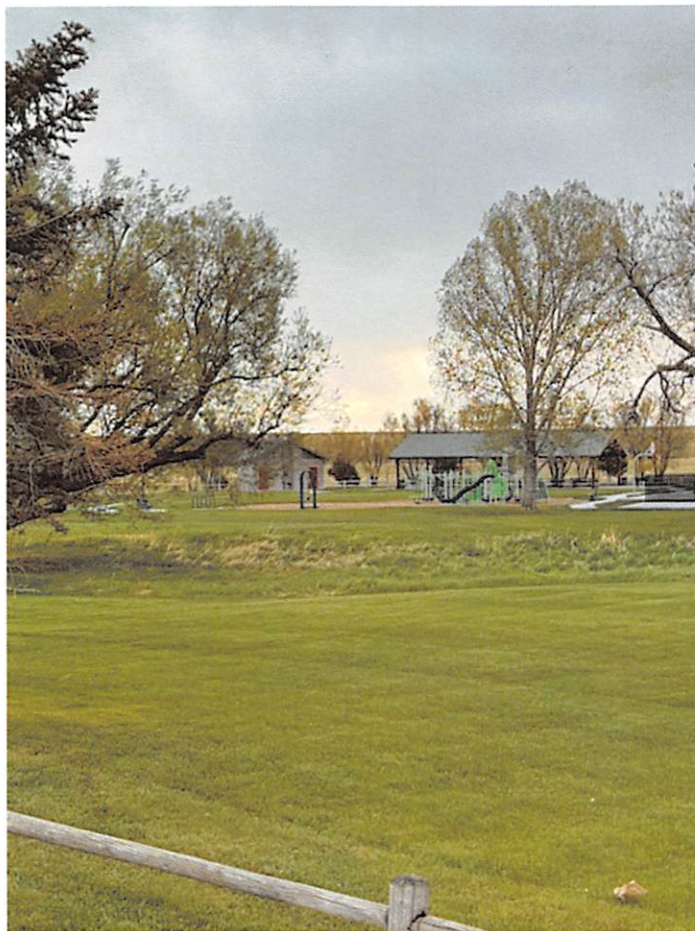
 Park Map
— North Up





Pictures of Clear Creek Park





5-Year Tree Maintenance Plan for Clear Creek Park

Larmie County, WY

Summary

Purpose:

To ensure long-term tree health, structural stability, and resilience to Cheyenne's semi-arid climate, wind, and cold winters through consistent watering, protection, inspection, and mulching practices.

Key Goals

1. Establish strong root systems and trunk structure in the first 3 years.
2. Maintain health and stability through proper watering, mulching, and pruning.
3. Protect trees from environmental stresses such as wind, drought, pests, and temperature extremes.
4. Implement an annual inspection and recordkeeping routine for sustainable tree management.

Core Maintenance Activities

Category	Summary of Practices
Watering & Irrigation	<ul style="list-style-type: none">- Deep watering 1–2 times per week during establishment (Years 1–2), tapering to monthly or as-needed watering for mature trees (Years 4–5).- Winter watering during dry, unfrozen periods.
Mulching	<ul style="list-style-type: none">- Maintain 2–4 inches of organic mulch around trees, keeping it away from trunks.- Refresh annually and expand mulch ring as the tree grows.
Tree Protection	<ul style="list-style-type: none">- Use stakes (first 2–3 years) and trunk wraps (winter).- Keep grass and mowers away from trunks to prevent injury.
Pruning & Structural Care	<ul style="list-style-type: none">- Light pruning of dead/damaged wood in early years.- Structural pruning in Year 3 and ongoing light maintenance thereafter.
Inspection	<ul style="list-style-type: none">- Semiannual inspections in early years (spring/fall).- Annual professional inspection starting Year 3 for pests, disease, and structural integrity.
Recordkeeping & Planning	<ul style="list-style-type: none">- Keep yearly logs of watering, inspections, and maintenance.- Reassess and renew the maintenance cycle every 5 years.

Climate-Specific Recommendations

- Use drought-tolerant and cold-hardy species suitable for USDA Zone 5a–5b.
- Prioritize deep, infrequent watering to encourage deep roots.
- Protect young trees from wind, sunscald, and rodents during winter months.
- Monitor for chlorosis (nutrient deficiency from alkaline soils).

Climate Context

- **USDA Hardiness Zone:** 5a–5b
- **Average Precipitation:** ~15 inches/year (mostly spring/summer)
- **Challenges:** High winds, cold winters, alkaline soils, drought conditions

Year 1: Establishment and Protection

Watering/Irrigation

- **Frequency:** 1–2 times per week (Apr–Oct) depending on rainfall.
- **Amount:** 10–15 gallons per inch of trunk diameter each watering.
- **Method:** Deep watering (soaker hose or drip irrigation).
- **Winter watering:** Once monthly (Nov–Mar) during dry, unfrozen periods.

Mulching

- Apply **3–4 inches of wood chips** around the base, keeping mulch **3–6 inches away** from the trunk.
- Maintain mulch ring **3–4 feet in diameter**.

Tree Protection

- Install **sturdy stakes** (2–3 years max) for wind protection.
- Use **trunk guards** or wraps (Nov–Apr) to prevent sunscald and rodent damage.
- Maintain grass-free zone around base to reduce mower/trimmer injury.

Inspection

- **Spring & Fall:** Check for moisture stress, staking tension, pests, and bark damage.
- **Corrective pruning:** Only dead/damaged branches; structural pruning delayed until Year 3.

Year 2: Root and Canopy Development

Watering

- Reduce frequency to **every 7–10 days** (Apr–Oct) depending on weather.
- Continue **deep, slow watering** to encourage deep roots.

Mulching

- Top-dress mulch to maintain **3-inch depth**; widen ring as tree grows.

Protection

- Remove or adjust stakes if tree is stable.
- Continue trunk protection in winter.

Inspection

- Spring and fall checks for pests (especially borers, aphids, scale) and signs of chlorosis (yellowing leaves from alkaline soil).

Year 3: Early Maturity

Watering

- Every **10–14 days** in summer, only during extended dry periods.
- Continue winter watering as needed.

Mulching

- Refresh annually; maintain clean mulch bed, removing weeds and grass.

Tree Protection

- Remove staking if still present.
- Consider pruning to develop strong structure (crossing branches, double leaders).

Inspection

- **Annual professional inspection** recommended.
- Soil test for nutrient and pH balance; apply amendments if necessary.

Year 4: Growth and Health Maintenance

Watering

- Mature trees: Water every **2–4 weeks** during drought.
- Newly established trees (planted within 5 years) still need monthly deep watering.

Mulching

- Continue 2–3 inches of organic mulch; replace as it decomposes.

Protection

- Maintain mower/weed trimmer clearance.
- Inspect for structural issues and prune lightly as needed.

Inspection

- Annual inspection for:
 - Deadwood or broken limbs
 - Pests/disease (bores, beetles, aphids, etc.)
 - Root flare visibility and mulch depth

Year 5: Long-Term Health and Monitoring

Watering

- Mature trees may require deep watering **once monthly** during dry spells.
- Maintain soil moisture but avoid waterlogging.

Mulching

- Maintain healthy mulch bed, expanding with tree canopy.

Protection

- Replace trunk wraps each winter if needed.
- Monitor for storm or wind damage.

Inspection

- Conduct **comprehensive annual inspection** by a certified arborist:
 - Structural pruning for long-term form
 - Root zone health check
 - Pest and disease management
- Develop new 5-year cycle for ongoing care.

Additional Best Practices

- **Fertilization:** Only if soil tests indicate deficiency; avoid high-nitrogen fertilizers in fall.
- **Pruning Schedule:** Light annual maintenance; major pruning only in late winter or early spring.
- **Recordkeeping:** Keep yearly logs of watering, inspections, and treatments.
- **Storm Response Plan:** After heavy winds or snow, inspect for cracks, splits, or uprooting.

Outcome

By following this plan, trees will develop strong root systems, healthy canopies, and resilience to Cheyenne's environmental stresses. The consistent 5-year cycle establishes a sustainable foundation for long-term urban and landscape tree management.