

Attachment B – District 2

This Plan is between the USDI Bureau of Land Management (BLM) High Plains District, High Desert District & Wind River/Bighorn Basin District, USDI Bureau of Reclamation (BOR), USDA Forest Service (USFS) Medicine Bow/Routt National Forests and Thunder Basin National Grassland, USDI US Fish & Wildlife Service (USFWS), National Park Service (NPS), Wyoming State Forestry Division (WSFD), Converse County, Goshen County, Natrona County, Natrona County Fire Protection District and Casper Mountain Fire District, City of Casper, Town of Bar Nunn, Town of Evansville, Town of Mills, the Wyoming Military Department-Camp Guernsey, Albany County, Albany County Fire District #1, Town of Rock River, City of Laramie, Carbon County, Carbon County Fire Protection District, City of Rawlins, Laramie County Fire District #1, Laramie County Fire Authority, Laramie County Fire District #3, Laramie County Fire District #4, Laramie County Fire District #5, Laramie County Fire District #6, Laramie County Fire District #9, Laramie County Fire District #10, Laramie County, Platte County, Platte County Fire District 1F, Platte County District 2F, Guernsey Rural Fire District, Chugwater Fire Protection District, Antelope Gap Rural Fire District, Wheatland Fire Department and Hartville Fire Department.

Forest Service County Grants and Agreements

Albany, Carbon, Converse, Natrona and Platte County – (22-FO-11020600-011).

Interagency Dispatch Centers:

1. The Entities agree to participate in the neighborhood dispatch system. The Entities give authority to the dispatch center to provide the services required in support of the appropriate center's charter and operating plan. For specifics, see the dispatch center plans.
2. For fires on or near State, BLM, USFS, USFWS & NPS ownership, Casper Interagency Dispatch Center will be used for the dispatch contact. For fires located in southwestern Natrona County and northwestern Carbon County that fall under BLM Wind River/Bighorn Basin District jurisdiction Cody Interagency Dispatch Center will be notified. Fire dispatch on private lands and within the incorporated boundaries of cities and towns will be conducted utilizing protocols and procedures adopted by the local Jurisdictional Entity.

PREPAREDNESS

Description of reciprocal fire protection zone:

1. Within the reciprocal fire protection zone, each Entity shall assume its own full cost of expenditures until the reciprocal period described below expires, following the initial report of the fire to the jurisdictional Entity, with the exception of WSFD as described in the Sub Geographical Agreement. Costs incurred after the reciprocal fire protection period ends will be reimbursed by the protecting Entity. The protecting Entity will be determined as soon as possible. All fires will be reported to the protecting Entity.
2. All lands party to this agreement are considered a reciprocal fire protection zone, with the exception of Wyoming State Park lands. All fires associated with Wyoming military department managed land that go beyond the reciprocal period will have costs reimbursed through the approval from the Wyoming State Forester and the Wyoming Governor. All costs attributable to Wyoming military department managed land fires will be sent to the Wyoming State Forestry Division for reimbursement.
3. BLM-WY became the protecting agency for a majority of BOR lands within the state of Wyoming. BOR lands shall be protected under the same terms as BLM lands; that is, mutual aid periods, billable responses, and cost share processes shall be the same for BOR as BLM. Both BLM and BOR will be signatory to this AOP. All bills for fires on BOR lands shall be sent to BLM for payment. Immediate notification of all fires either on or threatening BOR lands will be given to the appropriate interagency dispatch center. Notification of wildfires or serious injury will be made to BOR Wildfire Coordinator within 24 hours by the BLM Duty Officer.
4. Following the initial report of the fire to the jurisdictional Entity, and within the reciprocal fire protection zones, each Entity, with the exception of WSFD as described in the Sub Geographical Agreement, shall assume its own full cost of expenditures for the first operational period (midnight) following the initial report of the fires to the jurisdictional Entity.
5. Costs incurred after the reciprocal fire protection period ends will be reimbursed by the protecting Entity. The protecting Entity will be determined as soon as possible. All fires will be reported to the protecting Entity.

For all wildfires on State Parks administered land, bills should go to the Agency with surface jurisdiction.

6. Reciprocal protection is not construed as an automatic commitment for the maximum reciprocal fire protection period for each county listed above. Therefore, priority will be given to the release of a supporting Entity when it is mutually agreed upon by the initial attack forces that the fire situation is such that the protecting Entity's forces on the scene can adequately control the incident. Furthermore, within its capabilities, the protecting Entity will render support to the supporting Entity to include but not limited to food, water, and

additional forces to expedite release of the supporting Entity in advance of the maximum reciprocal fire protection period for each county, as listed above.

7. For incidents that go beyond the reciprocal period (mutual aid) it should be noted in the Cost Share Agreement that reciprocal (mutual aid) period will not apply; all costs will begin at the start of the incident. (i.e., For the sake of the agreement, all costs will be collected from the beginning of the incident and no mutual aid period will apply.)
8. To promote safe and aggressive initial attack, fires on all jurisdictions that pose an imminent threat to State and/or Private lands; WSFD shall assume the costs of the Wyoming State SEATs. Any prepositioned SEATs in the Cody Dispatch and Great Plains Dispatch Zones will be treated similar to Wyoming contracted SEATs during initial attack.

Fires on Federal lands or those fires that pose no imminent threat to State and/or Private lands; WSFD may seek reimbursement for all costs associated with the Wyoming State SEATs with the exception of the aircraft daily availability.

Reimbursable Fire Protection Services:

1. All counties, with the exception of Wyoming State Park lands are considered as a reimbursable protection zone after the first operational period (midnight) of reciprocal protection. All Wyoming State Park lands are fully reimbursable upon the initial report of the fire.
2. All counties party to this agreement are considered as a reimbursable fire protection zone after the end of first operational period (midnight) of reciprocal protection.
3. For any fires on State Park Lands located in all counties party to this agreement, State Parks administrative office will be contacted as soon as possible. State Parks contact information is listed in Attachment B-2 "Call List" of this AOP.

OPERATIONS

Special Management Considerations:

Federal Partners Party to this Agreement

All unplanned fires on federal land require a response and a decision. This is best communicated with clear objectives and an "incident strategy". The incident strategy is based on the following criteria:

- Should lead to meeting the objectives
- Risk to firefighters (Life First Concepts/Risk Management – probability and the consequences of fire impacting values at risk vs. the risk to firefighters put in place to mitigate the risk of fire impacting values.)

ATTACHMENT B – DISTRICT 2

Page 3 of 6

- Fuels, Weather and Topography influencing the fire and the anticipated spread of the fire
- Values truly at Risk: Communities, Infrastructure, Watersheds (including Municipal Watersheds), Social, Ecological, Cultural, etc.
- Partner agencies and their objectives (if the fire is or is expected to be multi-jurisdictional)
- Cost of meeting objectives
- Smoke Management: Coordination with the States and monitoring
- Desired conditions (outlined in the Land Management Plan Objectives or other documents)
- Resource Availability
- Fire modelling Tools
- Seasonality – duration of fire/change in conditions

Agency Administrators and Fire Managers assess the criteria above and then develop a strategy to successfully manage the fire, and meet objectives. The strategy may use natural barriers, changes in weather, fuel changes or rely heavily on the efforts of firefighters and aircraft. It could be a combination of all these elements (and usually is).

Fire Operations Guidance in Bark Beetle Killed Stands – USFS/R2

Due to altered fuel conditions, personnel operating within the bark beetle environment should be aware of the imminent danger presented by dead and dying trees, falling at an increasing rate across a broad forested landscape.

Purpose and Intent

Fire Operations Guidance is mindful of Foundational Fire Suppression Doctrine in the Forest Service. The first principle is: No resource or facility is worth the loss of human life; however, the wildland fire suppression environment is complex and possesses inherent hazards that can---even with reasonable mitigation---result in harm to firefighters engaged in fire suppression operations. In recognition of this fact, we are committed to the aggressive management of risk.

This guidance provides a collection of potential hazards unique to bark beetle forests, including appropriate practices that have evolved over time within the wildland fire service. It does not provide absolute solutions to the unlimited number of situations that could occur.

This guidance within bark beetle stands was provided with the intention of being used in conjunction with existing fire risk management documents. No further protocols or rules are necessary to make informed risk management decisions for fire operations in bark beetle stands.

The following hazard guidance is provided:

Tactical Hazards

- Withdrawal and/or reassessment should be considered if any of the following are present:
 - o Thunderstorms in the immediate vicinity.
 - o Wind speeds are strong enough that canopy movement is observed (consider that wind speeds at eye level in sheltered areas may not indicate the much greater winds aloft).
 - o Reliable communication cannot be established with the appropriate Dispatch Center and remain in place 24/7 when resources are engaged.
- Due to limited ingress or egress in remote areas or in terrain without vantage points, consider using an aerial platform for risk assessment and size up.

Potential Fire Behavior Hazards

- Due to increased potential of extreme fire behavior, when ERCs approach the 90th percentile, air reconnaissance should be on scene within 1 hour of detection.
- The following situations, though possible on any wildfire, may be accentuated in bark beetle stands:
 - o Accelerated transition to crown fire (when needles are present)
 - o Increased rate of spread (surface fire)
 - o Resistance to control (heavy dead and down)
 - o Frequent spotting, including long range (>.25 miles)

Special Lands Designations:

If a wildfire is responded to that occurs on or near lands with special designations (such as Congressionally designated Wilderness, Wilderness Study Areas (BLM), Recommended/Proposed/Potential Wilderness, Areas of Critical Concerns (BLM) or Sage Grouse Habitat), the jurisdictional agency will be contacted and coordinated with to ensure allowable tactics are used. Agencies with lands that have these special designations will provide the corresponding layer to dispatch, so that responding resources can be made aware of the special designation.

Other Considerations:

On Mortenson and Hutton Lake NWR's, all use of fire retardant or other suppression chemicals will require prior approval from the Project Leader or alternate due to Threatened and Endangered species concerns with the Wyoming Toad. If there is any discharge of fire suppression chemicals into the water sources for these two locations, then the Project Leader or alternate will be notified immediately.

Entirety of Agreement:

This Agreement consisting of 58 pages, the current Wyoming Wildland Fire Resource Mobilization Guide, and interagency dispatch operating plans represents the entire and integrated Agreement between the Entities.

DISTRICT 2 AOP DIRECTORY

Listed below are the Entity positions in order of authority for decisions within each Entity. For the purpose of notification, request of assistance, approval of retardant or equipment use, and for representatives for the Unit Administrator Group use the call list which is arranged according to the order each Entity wants their representatives called. Each Entity representative will be responsible to follow the proper procedure for their Entity. **Federal firefighter ICS can request retardant on Federal lands without approval.**

Bureau of Land Management Lands - District Fire Management Officer or their designated representative.

State Trust Lands - Assistant State Forester - Fire Management Officer/District Forester/or their designated representative.

National Forest Service Lands - District Ranger/Forest Fire Management Officer or their designated representative.

National Park Service Lands - Fire Management Officer/Superintendent or their designated representative.

U.S. Fish & Wildlife Service Lands - Manager or their designated representative.

Bureau of Reclamation Lands – BOR Agency Administrator or 24 hour control center, unless BOR parcel is administered by a State Park.

State Park Lands – Agency Administrator or their designated representative.

Private Lands - County Fire Warden, Assistant Fire Warden, County Commissioner/ District Fire Board/ or their designated representative.

City of Casper Lands – City Manager or their designated representative

Camp Guernsey, Wyoming Military Department Lands – Camp Guernsey Fire Chief / Fire Officer/ Base Operations Manager or their designated representative

CALL LIST

CASPER FIRE DISPATCH

(Also Smokebusters)

Phone Number

1-800-295-9952

Center Manager - Eddie Hutton	O: 307-233-1147 C:
Assistant Center Manager - Brandon Duncan	O: 307-233-1146 C: 307-554-0419
Assistant Center Manager - Josh McGee	O: 307-233-1145 C: 307-340-1797
Aviation - Kyle Adams	O: 307-223-1155

BUREAU OF LAND MANAGEMENT

HIGH PLAINS DISTRICT

Fire Management Officer - Craig Short	O: 307-261-7698 C: 307-258-0292
Assistant Fire Management Officer - Curtis Rasmuson	O: 307-684-1100 C: 307-763-0474
Assistant Fire Management Officer - Casey Cheesbrough	O: 307-261-7586 C: 307-399-2689
Casper Field Manager - Larry Sandoval	O: 307-261-7597 C: ?
Associate District Manager - Ben Begalke	O: 307-261-7559 C: 307-262-9974
District Manager - Kevin Christensen	O: 307-261-7777 C: 307-277-1873

HIGH DESERT DISTRICT

Fire Management Officer - Mark Randall	O: 307-352-0282 C: 307-231-9092
Assistant Fire Management Officer - Mike Wengert	O: 307-352-0217 C: 307-231-6054
Assistant Fire Management Officer - Chris Otto	C: 307-231-7561
Rawlins Field Manager - Tim Novotny	O: 307-328-4311

C: 307-274-7239

District Manager - Frank Keeler

O: 307-352-0282

C: ?

CODY FIRE DISPATCH

1-800-295-9954

Center Manager - Matthew Moralis

O: 307-578-5740

C: 202-677-9335

Assistant Center Manager - Lauren Bellinger

O: 307-578-5740

C: 307-250-7094

Assistant Center Manager - Mike Holloway

O: 307-578-5740

C: 970-389-5528

WIND RIVER/BIGHORN BASIN DISTRICT

Fire Management Officer - Brian Cresto

O: 307-578-5951

C: 307-899-1221

Assistant Fire Management Officer - Joel Peters

O: 307-322-8482

C: 307-388-4691

Assistant Fire Management Officer - Rance Neighbors

O: 307-347-5148

C: 307-431-9878

Worland Field Manager - Mike Phillips

O: 307-347-5297

C: 307-431-9881

District Manager - Johanna Kramer

O: 307-332-4808

C: 307-552-8127

MEDICINE BOW NATIONAL FOREST

SUPERVISOR'S OFFICE

Forest Fire Manager Officer - Jay Miller

O: 307-745-2415

C: 307-399-1422

H: 307-745-8400

Deputy Fire Staff Officer - Jeramy Dietz

O: 307-745-2358

C: 307- 760-6165

Forest Supervisor - Vacant

O: 307-745-2400

C:

Deputy Forest Supervisor - Milton Stubbs

O: 307-745-2440

C: 307-286-4415

NORTH ZONE - DOUGLAS DISTRICT

Fire Management Officer - Nick Collard	O: 307-358-7118 C: 907-688-0079
Assistant Fire Management Officer - Operations - Chris Rankin	O: 307-358-7120 C: 307-359-1997
Assitant Fire Management Officer - Fuels - Blake Cobb	O: 307-358-7122 C: 307-629-1243
District Ranger - Rob Robertson	O: 307-358-7101 C: 307-340-1495
Black Mountain Lookout Tower	O: 307-351-2502

CENTRAL ZONE - LARAMIE & BRUSH CREEK/HAYDEN RANGER DISTRICTS

Fire Management Officer - Jeremy McMahon	O: 307-745-2373 C: 307-760-0168
Assistant Fire Management Officer - Operations - Vacant	O: 307-326-2517 C:
Assistant Fire Management Officer - Fuels - Nick Zaczek	O: C: 307- 274-7905
Laramie District Ranger - Frank Romero	O: 307-745-2337 C: 307-760-8820
Brush Creek/Hayden Ranger District Ranger - Sevi Shperun	O: 307-326-2501 C: 307-761-2997

UNITED STATES FISH AND WILDLIFE SERVICE

MORTENSON, HUTTON LAKE, AND BAMFORTH NATIONAL WILDLIFE REFUGE SERVICES

Project Leader - Ross Flagen Central Sage Steppe Refuge Complex	O: 307-875-2187 C: 701-296-3102
Rocky Basin FMZ FMO - Erik Haberstick	O: 435-734-6421 C: 435-881-5715
Rocky Basin Fire Tech - Andy Buyers	C: 435-230-3598

BUREAU OF RECLAMATION

Area Manager - Lyle Myler (Acting)	O: 307-261-5628
Resources Mgt. Division Chief - Mahonri Williams	O: 307-261-5624 C: 307-253-0600
Regional Wildfire Officer - Robert Farrell	O: 406-247-7718
24 Hour Control Center	O: 307-261-5670

NATIONAL PARK SERVICE

FORT LARAMIE NATIONAL HISTORIC SITE

Superintendent - Mark Davison	O: 307-837-2221 Ext. 3004
-------------------------------	---------------------------

WYOMING MILITARY DEPARTMENT

CAMP GUERNSEY

Camp Guernsey Fire Dept. Fire Chief - Chad E. Brush - Acting	O: 307-836-7717 C: 435-315-3902
Camp Guernsey Fire Dept. Assistant Fire Chief - Vacant	O: C:
Base Operations Manager - Robby Cain	O: 307-836-7834 C: 307-331-8190

WYOMING STATE FORESTRY DIVISION

District Forester - Bryan Anderson	O: 307-234-6116 C: 307-631-8347
Assistant District Forester - Anna Thompson	C: 307-631-3799
Fire Management Officer - Jerod DeLay	O: 307-777-3368 C: 307-286-6315
Assistant Fire Management Officer - Chris Fallbeck	O: 307-777-8017 C: 307-631-2594
Fire Operations Specialist - Aviation - Chris Norquest	C: 307-631-8271
Fire Duty Officer Contact Number	307-777-5566

PRIVATE LANDS

ALBANY COUNTY

Laramie Dispatch O: 307-721-2526

Fire Warden - Chad Dinges O: 307-721-1885
C: 307-760-3641

Assistant County Fire Warden - Robert Clark Jr. C: 307-331-5815

Albany County Commissioners

Chairman - Terri Jones C: 307-760-7878

Commissioner - Pete Gosar C: 307-760-3219

Commissioner - Thad Hoff O: 307-760-3025

Albany County Clerk O: 307-721-2541

Albany County Fire District #1

Board President - Matt Burkart C: 307-399-4960

Board Secretary - Jon Essley C: 307-760-0091

Board Treasurer - James Jackson C: 760-805-2747

GARRETT FIRE ZONE

Zone Warden - Celia Corson C: 307-223-5354

LARAMIE PEAK FIRE ZONE

Zone Warden: Jon Osland C: 507-829-7660

LARAMIE FIRE DEPARTMENT

Fire Chief - Dan Johnson O: 307-721-5302
C: 307-760-6129

Wildland Coordinator - Justin Cowger O: 307-721-5332
C: 307-760-7275

On Duty Shift Commander C: 307-721-5332

ROCK RIVER FIRE DEPARTMENT

Fire Chief - Ricky Stricklin C: 307-460-8441

Assistant Fire Chief - John Chase C: 307-343-2005

SYBILLE VOLUNTEER FIRE DEPARTMENT

Fire Chief - John Wilson	C: 307-331-5267 H: 307-322-2863
--------------------------	------------------------------------

Assistant Fire Chief - Sean Kennedy	C: 307-331-3369
-------------------------------------	-----------------

CARBON COUNTY

County Fire Warden - John Rutherford	C: 307-320-7964 H:
--------------------------------------	-----------------------

Deputy County Fire Warden - David Gier	C: 307-321-8940
--	-----------------

Fire Station (Non-Emergency)	O: 307-328-2721
------------------------------	-----------------

Carbon County Sheriff's Department	O: 307-324-2776
------------------------------------	-----------------

CONVERSE COUNTY

County Fire Warden - Tom Reed	O: 307-358-2118 C: 307-351-7694 H: 307-351-2696
-------------------------------	---

Deputy County Fire Warden - Travis Wills	C: 307-351-0206 H: 307-358-3535
--	------------------------------------

Chairman County Commissioners - Jim Willox	O: 307-358-2244 H: 307-358-3551
--	------------------------------------

Converse County Sheriff's Office	O: 307-358-4700
----------------------------------	-----------------

Zone 1: Zone Warden - Monte Reed	C: 307-351-0537
----------------------------------	-----------------

Zone 2: Zone Warden - Mark Horr	C: 307-351-4414 H: 307-351-1122
---------------------------------	------------------------------------

Zone 3: Zone Warden - Steve Wintermote	C: 307-359-0623 H: 307-358-4879
--	------------------------------------

Zone 4: Zone Warden - Shawn Daly	H: 307-358-6007 C: 307-351-6007
----------------------------------	------------------------------------

Zone 5: Zone Warden - Steve Goutenburger	H: 307-298-5025 C: 307-716-0003
--	------------------------------------

Zone 6: Zone Warden - Rick Grant	C: 307-262-6977 H: 307-436-2421
----------------------------------	------------------------------------

Zone 7: Shawn Hildebrand C: 307-262-3429

Zone 8: Zone Warden - Keith Moore H: 307-358-3716

Zone 9: Zone Warden - Cowboy Hildebrand C: 307-359-1043

GOSHEN COUNTY

County Fire Warden- Thomas Bozeman C: 307-534-6764
O: 307-532-7039
H: 757-755-5533

Deputy Fire Warden - Chuck Kenyon C: 307-532-1748

Chairman County Comissioners - Micheal McNamee O: 307-534-5156

LARAMIE COUNTY

County Fire Warden - Matt Butler C: 307-274-1405
O: 307-633-4335

Deputy Fire Warden - Jeanine West C: 307-274-5800
O: 307-633-4333

Laramie County Sheriff's Office O: 307-637-6410

NATRONA COUNTY

County Fire Warden - Mike Haigler C: 307-258-2950
O: 307-235-9311

Deputy County Fire Warden - Travis Cozine C: 307-262-6530
O: 307-235-9311

Chairman County Commissioners - Dave North C: 307-262-6710

NATRONA COUNTY FIRE PROTECTION DISTRICT O: 307-265-8656

Fire Chief - Brian Oliver C: 307-258-4384
O: 307-234-8826

Chairman - Dean Jackett C: 307-262-2272

Vice Chairman - Jerry Wyatt H: 307-267-9107

Secretary/Treasurer - George Tillman H: 307-315-7211

BAR NUNN FIRE DEPARTMENT

Fire Chief - Eugene Zahara C: 530-945-8803

Assistant Fire Chief - Vacant C:

CASPER MOUNTAIN FIRE DISTRICT

Fire Chief - Lisa Evers C: 307-258-1213

Asssistant Fire Chief - Jim Barton C: 307-262-3651

Chairman - Kevin Knopik C: 307-277-1666

CASPER FIRE DEPARTMENT

Fire Chief - Jacob Black O: 307-235-8222

Deputy Chief - Devin Garvin O: 307-235-8222

PLATTE COUNTY

Wheatland Dispatch 307-322-2140

County Fire Warden - Tony Krotz C:
O: 307-322-1356 or 2331

Assistant County Fire Warden - Ken Small C: 307-331-9092
H: 307-322-2303

Authorized Representatives/Signatures:

By signature below, all signatories to this Annual Operating Plan certify that the individuals listed in this document are authorized to act in their respective areas for matters related to this Annual Operating Plan. By my signature below, I authorize my signature to be photocopied into each and all of the Annual Operating Fire Plans for the Wyoming Interagency Cooperative Fire Management Agreement.

I understand that my Entity will be provided a copy of the agreement with a photocopied signature page when the required signatures are obtained.

***Counterpart Signatures.** For the convenience of the parties, this agreement may be executed in one or more counterparts and each executed counterpart shall for all purposes be deemed an original and shall have the same force and effect as the original, but all of which shall together constitute in the aggregate one and the same instrument.*

PREPARED AND APPROVED BY:

Albany County Fire Warden	Printed Name	Date
---------------------------	--------------	------

Chairman- Albany County Commissioners	Printed Name	Date
---------------------------------------	--------------	------

Laramie City Fire Chief	Printed Name	Date
-------------------------	--------------	------

President, Albany County Fire District No. 1	Printed Name	Date
--	--------------	------

Mayor, President Laramie City Council	Printed Name	Date
---------------------------------------	--------------	------

Rock River VFD Chief	Printed Name	Date
----------------------	--------------	------

Carbon County Fire Warden	Printed Name	Date
---------------------------	--------------	------

Chairman- Carbon County Fire Protection District	Printed Name	Date
--	--------------	------

Rawlins Fire Department	Printed Name	Date
-------------------------	--------------	------

Forest Supervisor, Medicine Bow Routt National Forests and Thunder Basin National Grasslands, USDA	Printed Name	Date
---	--------------	------

Grants/Agreements Specialist, Forest Service, USDA	Printed Name	Date
--	--------------	------

District Manager, Wind River/ Bighorn Basin District Bureau of Land Management, USDI	Printed Name	Date
---	--------------	------

District Manager, High Desert District Bureau of Land Management, USDI	Printed Name	Date
---	--------------	------

District Manager, High Plains District Bureau of Land Management, USDI	Printed Name	Date
---	--------------	------

Project Leader Central Sage Steppe
Refuge Complex USFWS

Printed Name

Date

Area Manager,
Bureau of Reclamation, USDI

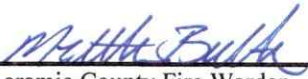
Printed Name

Date


Fort Laramie National Historic Site


Printed Name

Date



Laramie County Fire Warden
3962 Archer Parkway, Cheyenne WY 82009



Printed Name


Date

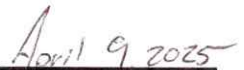

Chairman- Laramie County Commissioners
310 W. 19th Street, Cheyenne, WY 82001

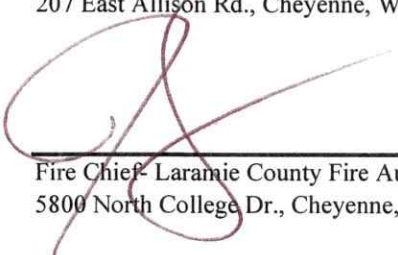

Printed Name


Date

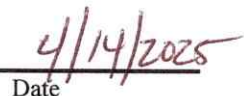

Fire Chief- Laramie County Fire District #1
207 East Allison Rd., Cheyenne, WY 82007

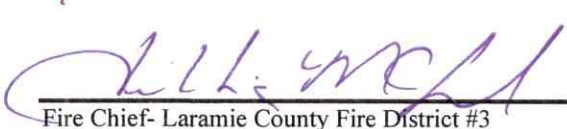

Printed Name

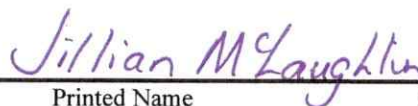

Date

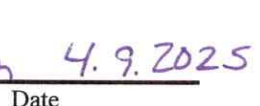

Fire Chief- Laramie County Fire Authority
5800 North College Dr., Cheyenne, WY 82009


Printed Name


Date


Fire Chief- Laramie County Fire District #3
P.O. Box 131, Albin, WY 82050


Printed Name


Date



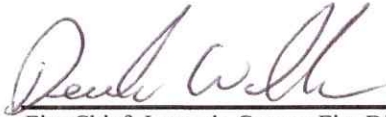
Fire Chief- Laramie County Fire District #4
P.O. Box S, 4832 Main Ave., Carpenter, WY 82054

Cy Thorup

Printed Name

4-9-25

Date



Fire Chief- Laramie County Fire District #5
P.O. Box 870, Pine Bluffs, WY 82082

Derek Walls

Printed Name

4/9/25

Date



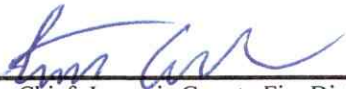
Fire Chief- Laramie County Fire District #6
P.O. Box 103, Burns, WY 82053

Bob Hansen

Printed Name

4-9-25

Date



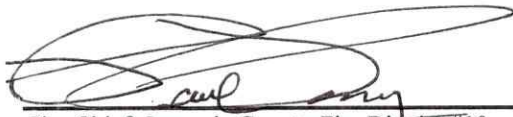
Fire Chief- Laramie County Fire District #9
P.O. Box 155, Chugwater, WY 82210

Tim Ash

Printed Name

6/6/25

Date



Fire Chief- Laramie County Fire District #10
88 Harriman Rd., Granite Canon, WY 82059

Paul Pomeroy

Printed Name

4-9-25

Date

REVIEWED AND APPROVED AS TO FORM ONLY



Mark Voss- Laramie County Attorney

Mark Voss

Printed Name

4-9-25

Date

Converse County Fire Warden

Printed Name

Date

Chairman- Converse County Commissioners

Printed Name

Date

Goshen County Fire Warden	Printed Name	Date
---------------------------	--------------	------

Chairman- Goshen County Commissioners	Printed Name	Date
---------------------------------------	--------------	------

Ft. Laramie Fire Protection District	Printed Name	Date
--------------------------------------	--------------	------

LaGrange Fire Protection District	Printed Name	Date
-----------------------------------	--------------	------

Prairie Center Fire District	Printed Name	Date
------------------------------	--------------	------

Hawk Springs Fire District	Printed Name	Date
----------------------------	--------------	------

Jay Em Fire District	Printed Name	Date
----------------------	--------------	------

Torrington Fire District #3	Printed Name	Date
-----------------------------	--------------	------

Veteran Fire Protection District	Printed Name	Date
----------------------------------	--------------	------

Yoder Fire District	Printed Name	Date
---------------------	--------------	------

Lingle Fire District	Printed Name	Date
----------------------	--------------	------

Huntley Fire District	Printed Name	Date
-----------------------	--------------	------

Chugwater Fire District	Printed Name	Date
-------------------------	--------------	------

Natrona County Fire Warden	Printed Name	Date
----------------------------	--------------	------

Chairman-Natrona County Commissioners	Printed Name	Date
---------------------------------------	--------------	------

Fire Chief- Natrona County Fire Protection District	Printed Name	Date
---	--------------	------

Chairman- Natrona County Fire Protection District	Printed Name	Date
---	--------------	------

Fire Chief- Casper Mountain Fire District	Printed Name	Date
---	--------------	------

Chairman- Casper Mountain Fire District	Printed Name	Date
---	--------------	------

Bar Nunn Fire Department	Printed Name	Date
--------------------------	--------------	------

Mills Fire Department	Printed Name	Date
-----------------------	--------------	------

Evansville Fire Department	Printed Name	Date
----------------------------	--------------	------

City of Casper- City Manager	Printed Name	Date
------------------------------	--------------	------

Salt Creek Emergency Service	Printed Name	Date
------------------------------	--------------	------

Platte County Fire Warden	Printed Name	Date
---------------------------	--------------	------

Chairman- Platte County Commissioners	Printed Name	Date
---------------------------------------	--------------	------

Platte County Fire District 1F	Printed Name	Date
--------------------------------	--------------	------

Platte County Fire District 2F	Printed Name	Date
--------------------------------	--------------	------

Guernsey Rural Fire District	Printed Name	Date
------------------------------	--------------	------

Chugwater Fire Protection District	Printed Name	Date
------------------------------------	--------------	------

Hartville Volunteer Fire Department	Printed Name	Date
-------------------------------------	--------------	------

Antelope Gap Rural Fire District	Printed Name	Date
----------------------------------	--------------	------

Wheatland Fire Department	Printed Name	Date
---------------------------	--------------	------

Base Operations Manager Wyoming Military Department	Printed Name	Date
--	--------------	------

The Adjutant General Wyoming Military Department	Printed Name	Date
---	--------------	------

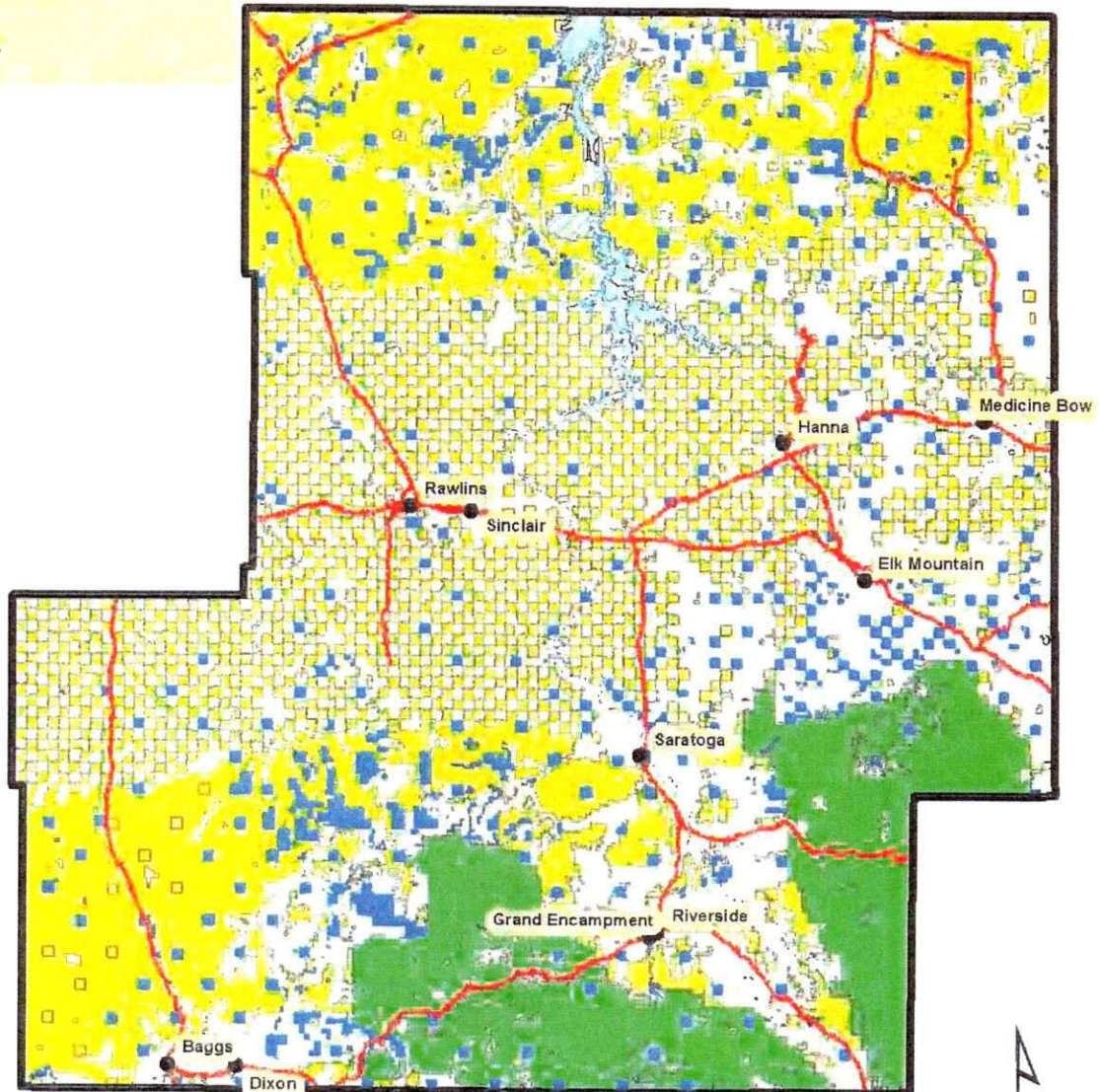
The United States Property and Fiscal Officer Wyoming Military Department	Printed Name	Date
--	--------------	------

District Forester- Wyoming State Forestry Division	Printed Name	Date
--	--------------	------

Carbon County

Legend

-  Bureau of Land Management
-  Bureau of Reclamation
-  Fish & Wildlife
-  Forest Service
-  Private
-  State
-  Water

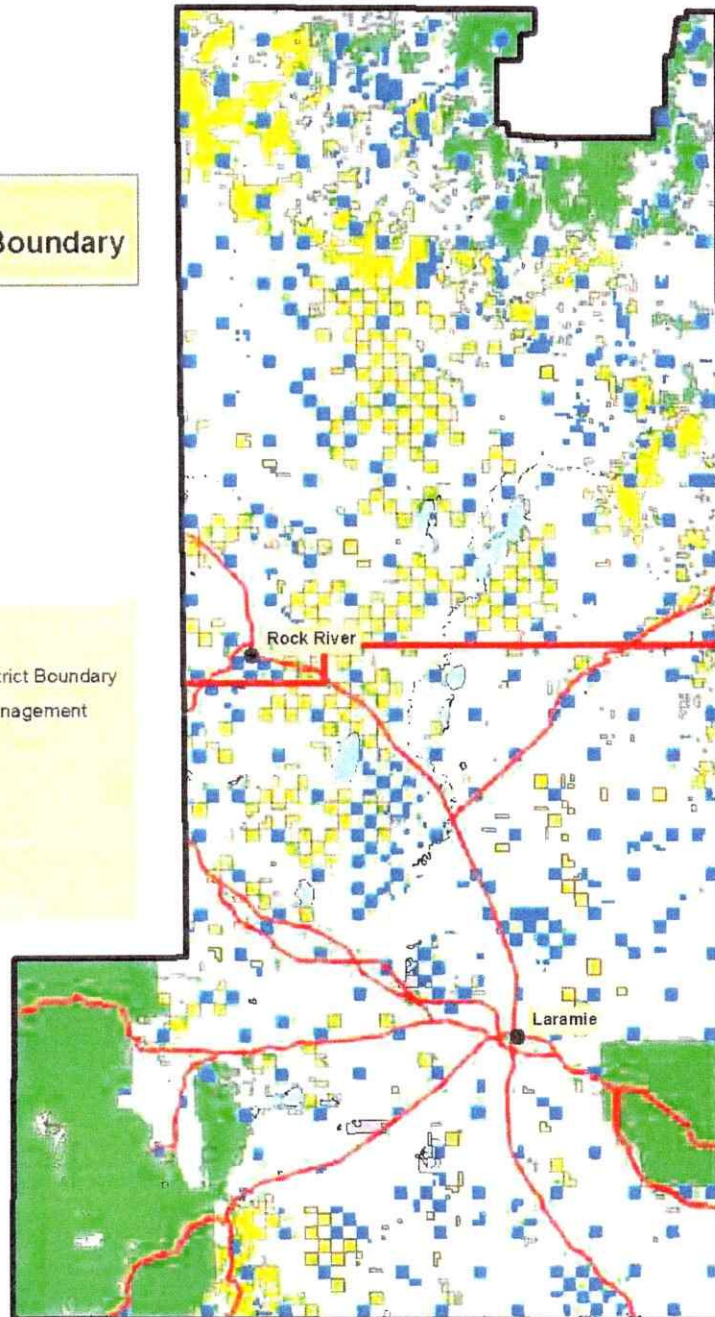


Albany County

Albany Co. Fire
North of District Boundary

Legend

- Albany Co Fire District Boundary
- Bureau of Land Management
- Fish & Wildlife
- Forest Service
- Private
- State
- Water



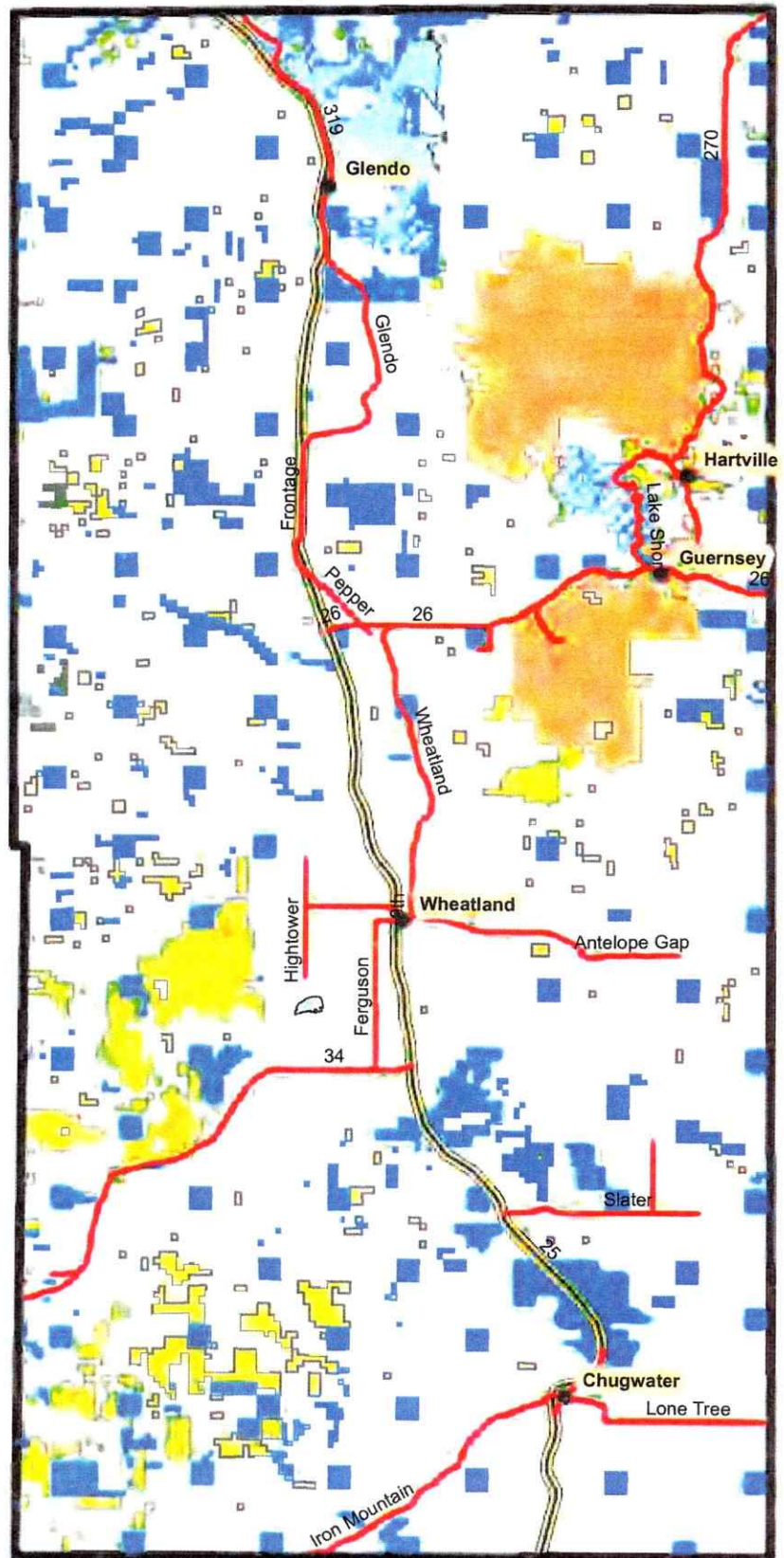
Twp. 21

Twp. 20

Fire District 1
South of District Boundary



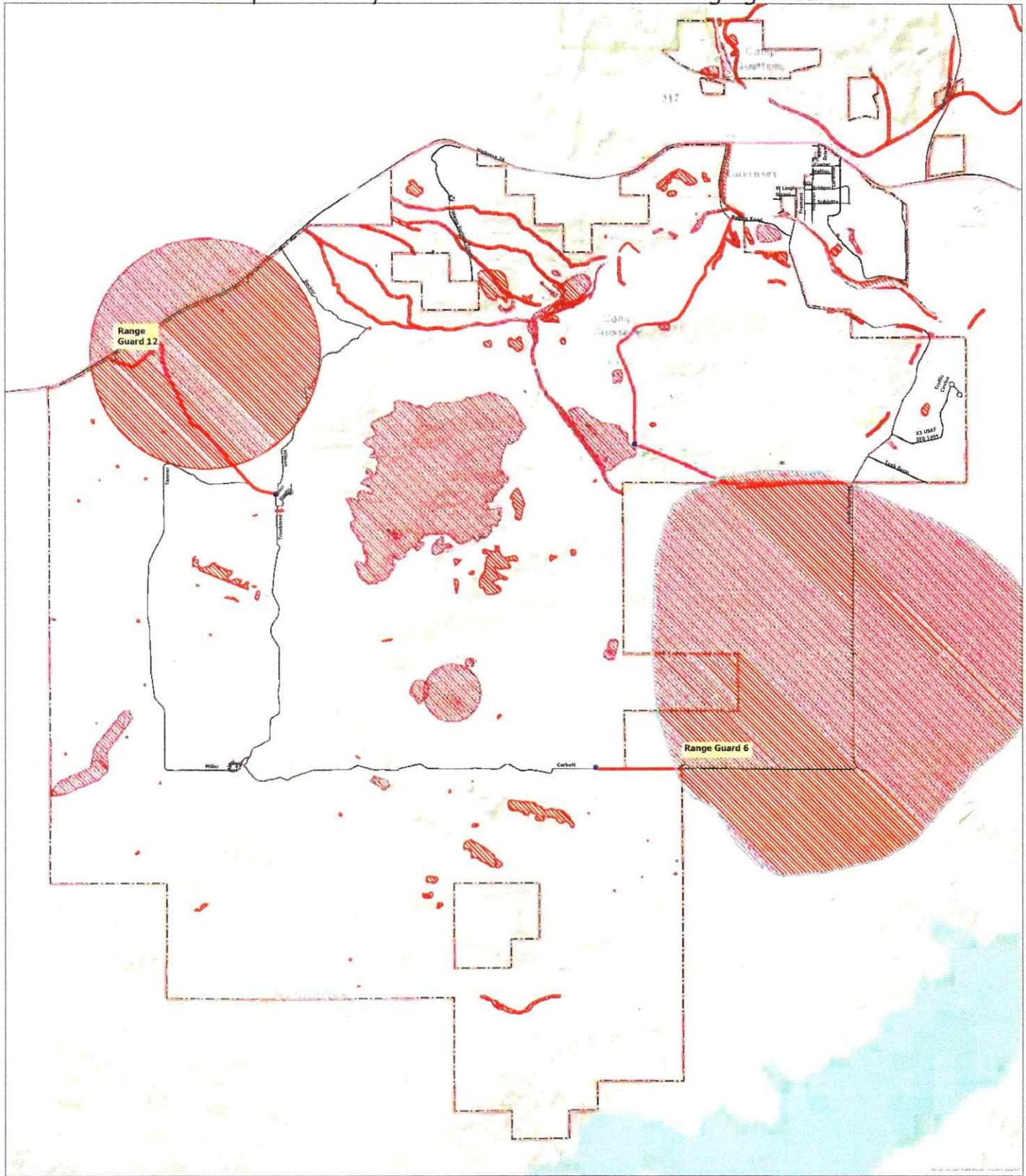
Attachment E Platte County



Legend

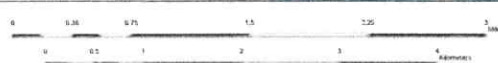
- Bureau of Land Management
- Bureau of Reclamation / State Park
- Camp Guernsey
- Forest Service
- Private
- State
- Water
- Interstate 25

Camp Guernsey STA Access Routes and Staging Areas

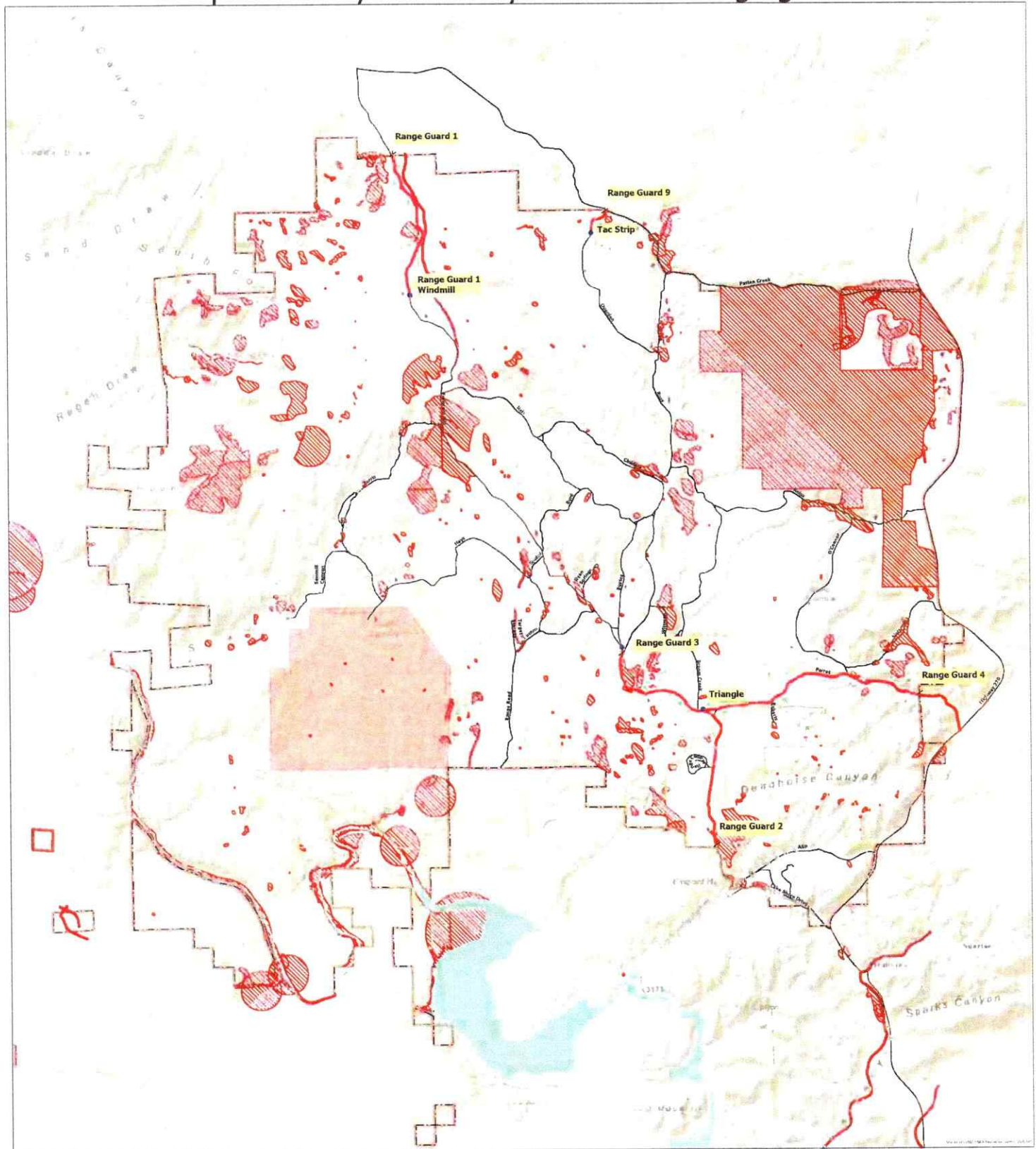


Rally and Access

- Rally Area
- Access Route
- Range Guard
- Road
- Boundary
- Structure



Camp Guernsey NTA Entry Points and Staging Areas

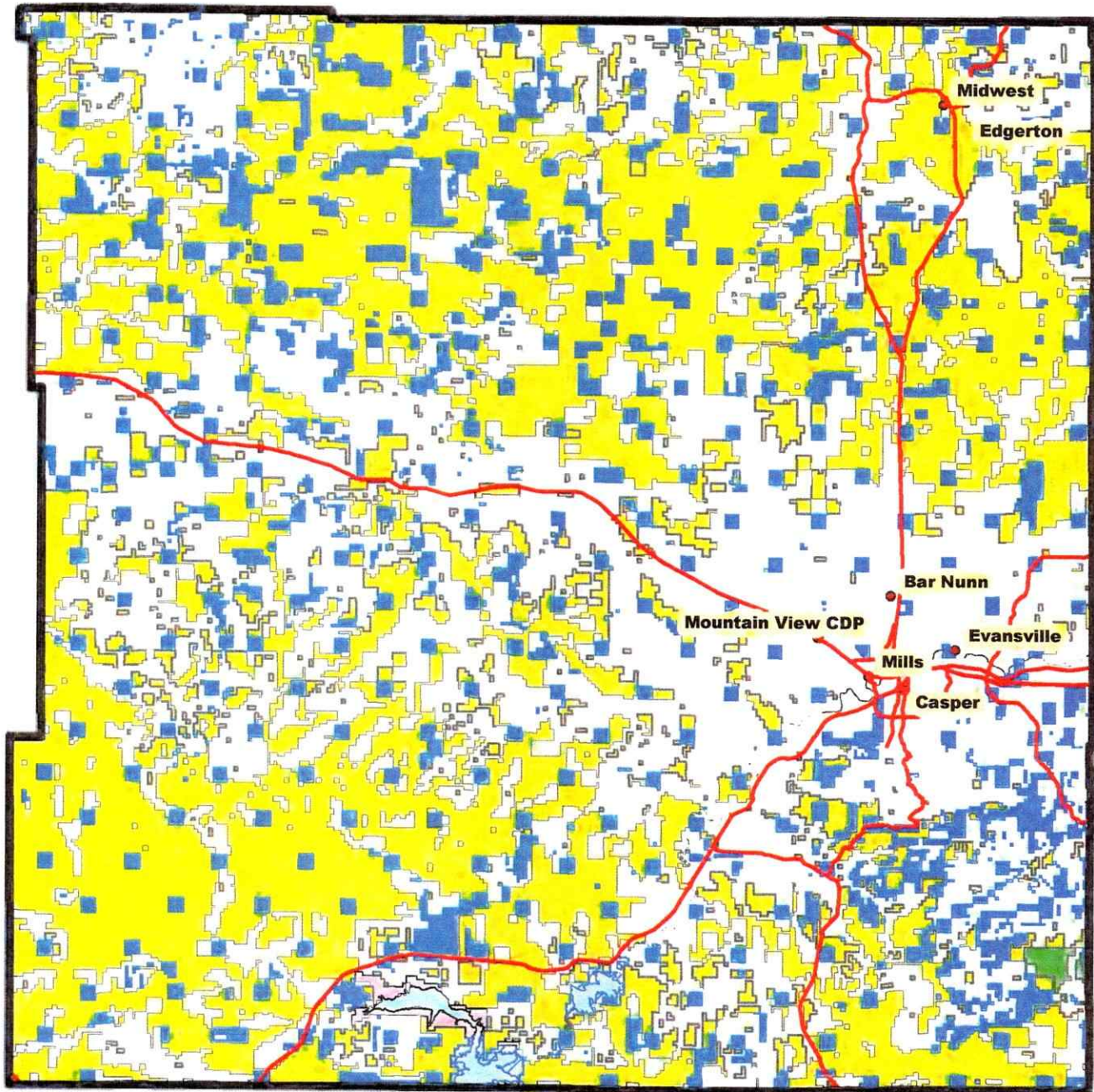


- Staging Area
- ✂ Range Entrance
- Access Routes
- Roads
- Restrictions
- Installation
- Impact Area



Attachment E

Natrona County



Legend

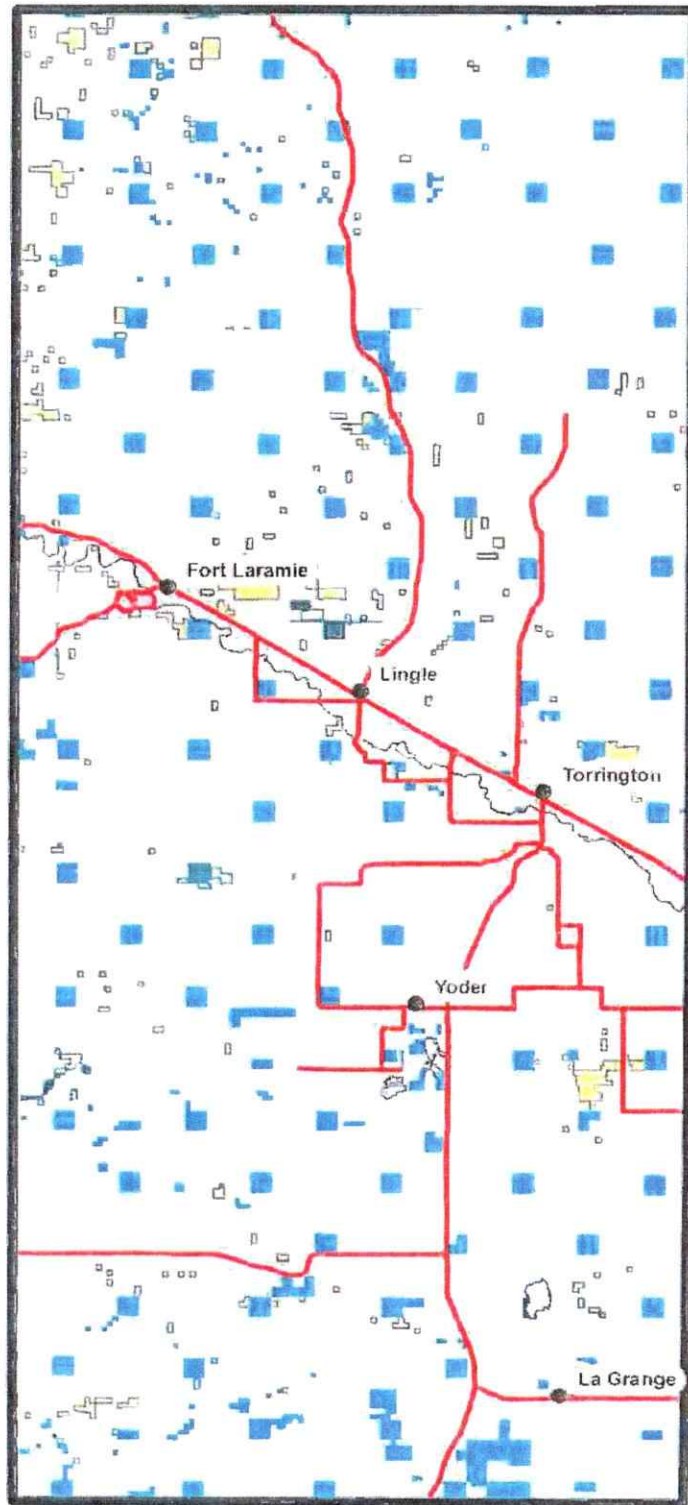
- Bureau of Land Management
- Bureau of Reclamation
- Fish & Wildlife
- Forest Service
- Private
- State
- Water



Goshen County

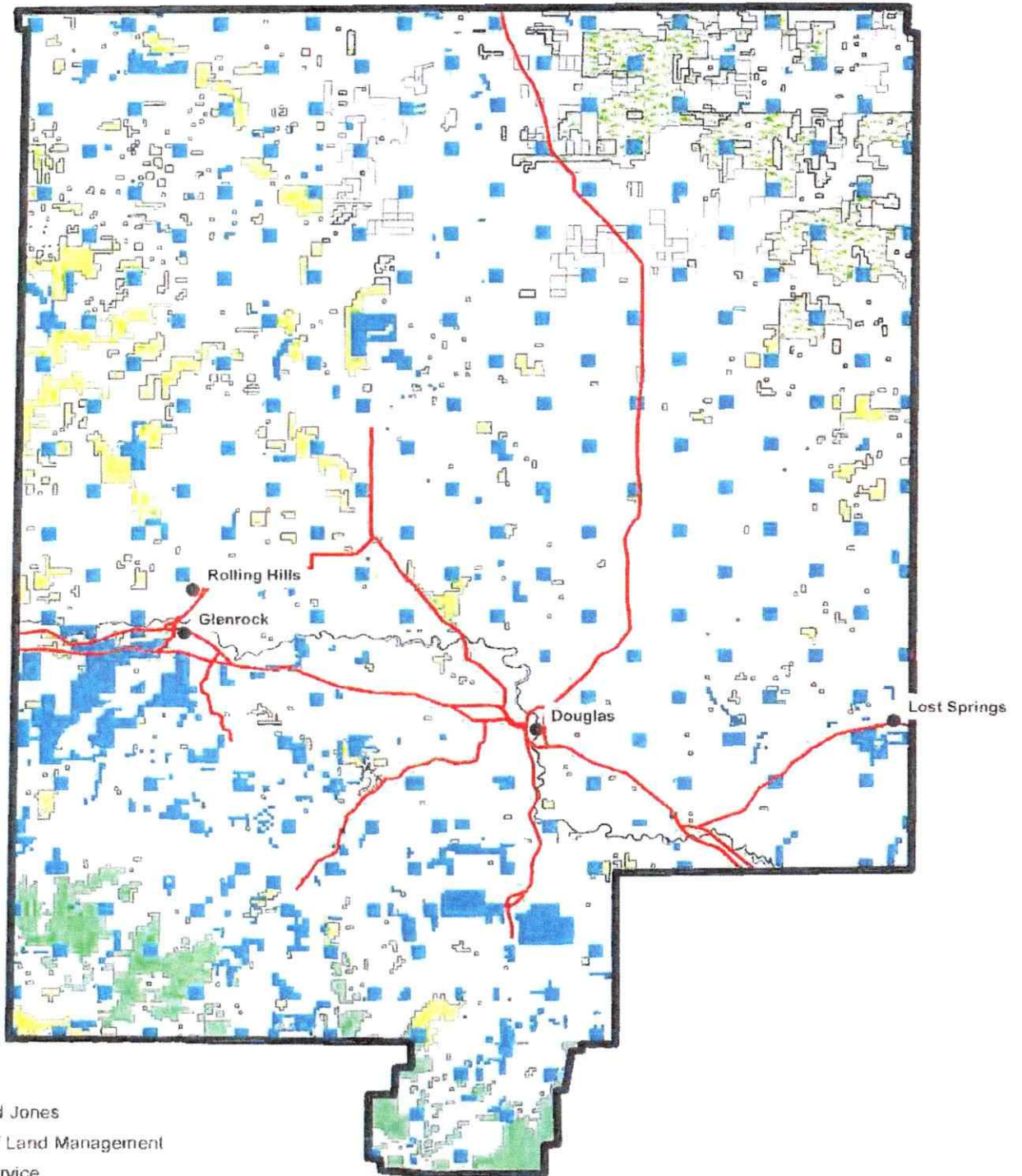
Legend

-  Fort Laramie NHS
-  Bureau of Land Management
-  Private
-  State
-  Water



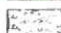




42

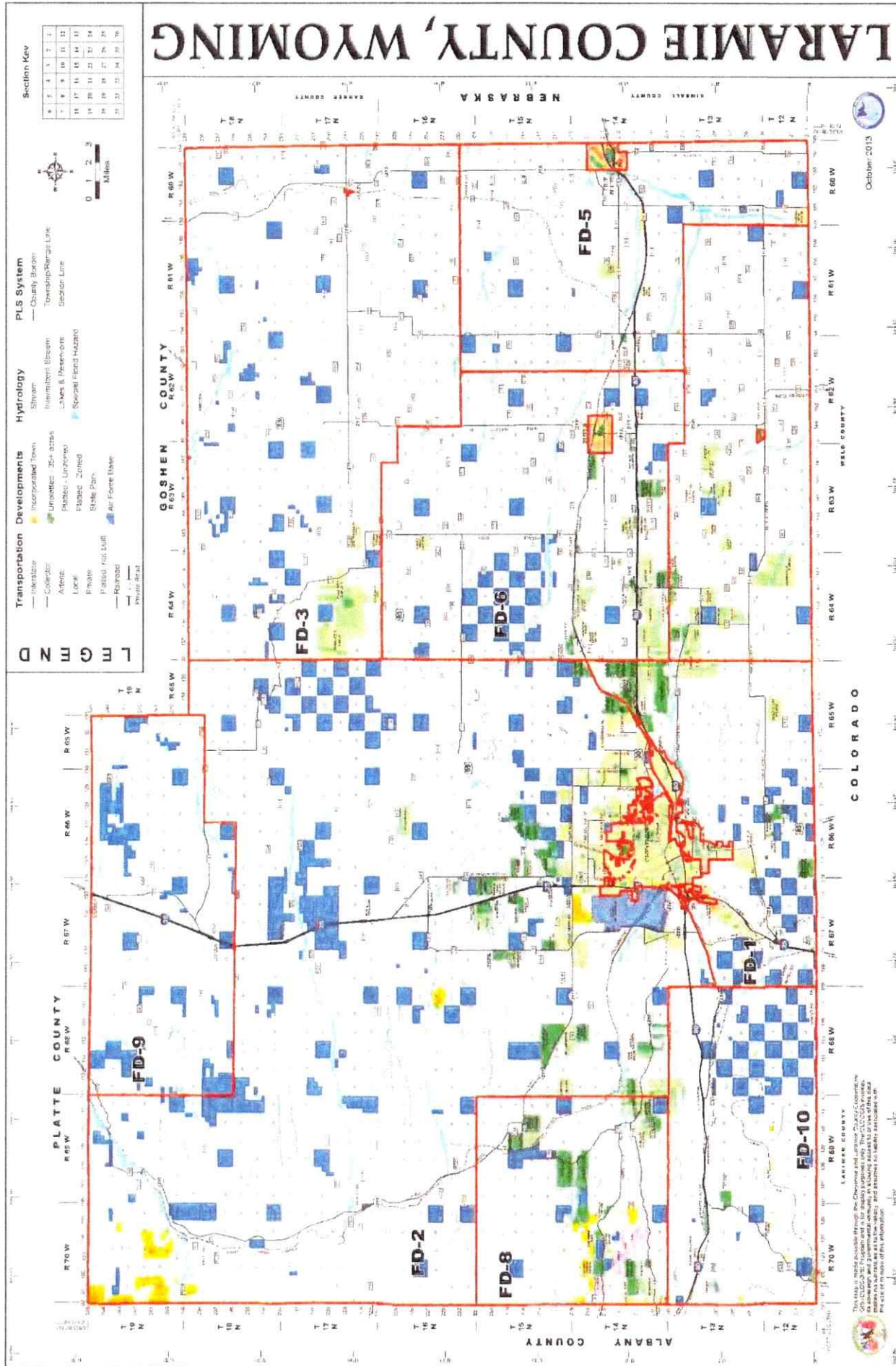
Converse County



Legend

-  Private
-  Bureau of Land Management
-  Forest Service
-  National Grasslands
-  State
-  Water





RADIO COMMUNICATIONS PLAN				WY-HDD Group 5 Rawlins		Date Prepared: 1-23-2013			Group 5 User Select Tones
Ch #	Channel Name	Function	RX Freq	RX Tone	TX Freq	TX Tone	Remarks		
W= Wide Band (25.0 kHz) N= Narrow Band (12.5 kHz)									
1	Fire 1	BLM Tac	166.6375 N		166.6375 N			110.9	
2	Fire 2	BLM Tac	166.8250 N		166.8250 N			123.0	
3	Fire 3	BLM Tac	167.1250 N		167.1250 N			131.8	
4	Scene	BLM Tac	166.0875 N		166.0875 N			136.5	
5	Rawlins Base	HDD-BLM Base	168.2750 N		168.2750 N			146.2	
6	Rawlins Rpt	HDD-BLM RPT	168.2750 N		164.2500 N	See	Use HDD BLM-Rawlins Rpt. Pick List	156.7	
7	FERN	WY State/Local	154.2800 N		154.2800 N			167.9	
8	Med Bow West Rpt	USFS RPT	171.7875 N	110.9	164.1500 N	See	Use Meb Bow West Rpt. Pick List (Saratoga Base)	103.5	
9	Med Bow East Rpt	USFS RPT	171.5000 N	110.9	164.0000 N	See	Use Meb Bow East Rpt. Pick List (Laramie Base)	192.8	
10	Med Bow North	USFS RPT	173.7625 N	110.9	164.8000 N	See	Use Meb Bow North Rpt. Pick List (Douglas Base)	107.2	
11	Albany Co. Rpt	Co. Road & Bridge	155.7600 N	114.8	155.1450 N		Albany Co. Rpt use CH 11/ CH 12Tone (114.8) Slaved	114.8	
12	Latham Draw Rpt	Carbon/SW	172.5875 N		164.2500 N	100	Carbon and Sweetwater Counties		
13	Carbon County	Local Tactical	155.8050 N		155.8050 N				
14	A/G 10	Air to Ground	166.9375 N		166.9375 N		IA Zone WY04		
15	A/G 15	Air to Ground	167.5250 N		167.5250 N		IA Zone WY04 & WY07		
16	A/G 12	Air to Ground	167.0750 N		167.0750 N		IA Zone WY07		
HDD BLM-Rawlins Rpt. Tone Guard Pick List.									
CH 6									
1 - Elk Mtn (110.9) 7 - Portable Rpt.									
(167)									
2 - Flattop (123.0)									
3 - Laramie Pk. (131.8)									
4 - Copper Mtn. (136.5)									
5 - Whiskey Peak (146.2)									
Med Bow East Rpt.									
Tone Guard Pick List									
CH 8									
3 - Blackhall Mtn. (131.8)									
10 - Kennaday Peak (107.2)									
11 - Bridger Peak (114.8)									
Med Bow West Rpt.									
Tone Guard Pick List									
CH 9 4 - Jelm Mtn. (136.5)									
5 - Pole Mtn (146.2)									
6 - Spruce Mtn. (156.7)									
Med Bow North Rpt. Tone Guard Pick List									
CH 10 6 - Gunny Sack Mtn. (156.7)									
7 - Cow Creek Mtn. (167.9)									
8 - Black Mtn.(103.5)									
Albany County Rpt. Tone Guard Pick List									
CH 11 - Albany CO. Rpt									
15 - Jelm Mountain									
12- Rock River									

RADIO COMMUNICATIONS PLAN				WY-HDD Group 6 Rock Springs		Date Prepared: 1-23-2013		Group 6 User Select Tones	
Ch #	Channel Name	Function	RX Freq	RX Tone	TX Freq	Tx Tone	#		
1	Fire 1	BLM Tac	166.6375 N		166.6375 N		1	110.9	
2	Fire 2	BLM Tac	166.8250 N		166.8250 N		2	123.0	
3	Fire 3	BLM Tac	167.1250 N		167.1250 N		3	131.8	
4	Scene	BLM Tac	166.0875 N		166.0875 N		4	136.5	
5	Rock Springs Base	HDD-BLM Base	168.5750 N		168.5750 N		5		
6	Rock Springs Rpt.	HDD-BLM RPT	168.5750 N		165.0000 N	See	6		
7	FERN	WY State/Local	154.2800 N		154.2800 N		7	167.9	
8	Law Mutual Aid	Local Law/Fire	154.8750 N		154.8750 N		8		
9	Sweetwater Co.	Local Tactical	155.0550 N		155.0550 N		9		
10	Fire District # 1	Local Tactical	155.8725 N		155.8725 N		10		
11	Unita Co.	Local Tactical	154.4300 N		154.4300 N		11		
12	Sublette Co.	Local Tactical	154.9800 N		154.9800 N		12		
13	Kemmerer VFD	Local Tactical	154.4150 N		154.4150 N		13		
14	Nat. All Call	Crew	163.1000 N		163.1000 N		14		
15	A/G 10	Air to Ground	166.9375 N		166.9375 N		15	1A Zone WY04	
16	A/G 15	Air to Ground	167.5250 N		167.5250 N		16	1A Zone WY04	
HDD BLM-Rock Springs Rpt. Tone Guard Pick List CH 6									
1 - Hogs Back (110.9)									
2 - Twin Buttes (123.0)									
3 - Evanston (131.8)									
4 - Little Mountain (136.5)									
7 - Portable Repeater									

CHANNEL NAME		RX	TX	TONE
Albany County	Albany CO Fire Direct R & B	155.760	155.760	
	Fire 1 Rept.	154.430	154.830	192.8
	Fire 1 direct	154.430	154.430	
	Fire 2	154.310	154.310	
	R&B Jelm	155.760	155.145	114.8
	R&B Rock River	155.760	155.145	192.8
Aviation	Flight Following	168.650	168.650	110.9
*NARROWBAND	Air Guard	168.625	168.625	110.9
Aviation IA Air to Ground Goshen, Platte & South Med Bow	WY07 – A/G 12 – Primary A/G 15 – Secondary	167.075 167.525	167.075 167.525	
	WY04 – A/G 10 – Primary A/G 15 – Secondary	166.9375 167.525	166.9375 167.525	
Natrona Co in Cody Dispatch	WY05 – A/G 12 – Primary A/G 13 – Secondary A/G 35 - Secondary	167.0750 167.4250 167.2250	167.0750 167.4250 167.2250	
Natrona & Converse Co.	WY03 – A/G 15 – Primary A/G 35 – Secondary A/G 31 – Secondary	167.525 167.2250 166.7875	167.525 167.2250 166.7875	
BLM				
BLM-Rawlins	Sheep Mtn Rptr	168.275	164.250	136.5
High Desert Dist. (HDD)	Elk Mountain Rptr	168.275	164.250	110.9
	Flat Top Rptr	168.275	164.250	123.0
	Whiskey Peak Rptr	168.275	164.250	146.2
	Laramie Peak Rptr	168.275	164.250	131.8
	Lincoln Head Rptr	168.275	164.250	156.7
	Portable Rptr 1	168.275	164.250	167.9
	Portable Rptr 2	168.275	164.250	103.5
BLM-Casper	Casper Mtn Rptr	168.300	171.725	
High Plains Dist. (HPD)	Laramie Peak BLM-Casper (PR) RPT	168.300	171.725	131.8
	Pumpkin Butte RPT	168.300	171.725	110.9
BLM Tactical				
High Desert-Rawlins & Rock Springs Field Offices	High Desert Dist. -Fire 2	166.825	166.825	
High Plains-Casper Field Office	High Plains Dist. -Fire 3	167.125	167.125	
Wind River-Worland & Cody Field Offices	Wind River Dist. – Fire 1	166.6375	166.6375	
Carbon County	Carbon CO Baggs	155.805	158.760	107.2
	Carbon CO Elk Mountain	155.805	158.760	100.0

	Carbon CO Fire Direct	155.805		155.805	100.0
	Carbon CO Whiskey Peak	155.805		158.760	114.8
Converse County	Converse CO Rural Fire	154.0700	123.0	154.0700	123.0
	Glenrock Fire	154.340		154.340	
	Glenrock Fire TAC	154.160		154.160	

Goshen County	Channel Name	RX		TX	
	Torrington Fire	154.145		154.145	
	Lingle Fire	154.235		154.235	
	Fort Laramie Fire	154.205		154.205	
	Prairie Center Fire	154.490		154.490	
	Jay'Em Fire	154.160		154.160	
	Yoder Fire	154.040		154.040	
	Hawk Springs Fire	154.430		154.430	
	LaGrange Fire	154.830		154.830	
	Chugwater Fire	154.805		154.805	
	Veteran Fire	154.130		154.130	
	WyoLink Trucking Talk Groups:				
	MAT 07				
	07 CAT 1				
	07 CAT 2				
	07 FIRE 1				
	07 FIRE 2				
Laramie County	Laramie CO Repeater	155.715		153.995	100.0
	Laramie CO SO -- Repeater	155.655	100.0	154.890	
	Laramie CO Fire Direct	155.715		155.715	
	Laramie CO So -- Direct	155.655		155.655	
	WyoLink Trucking Talk Groups:				
	MAT 07				
	02 CAT 1-4				
Med-Emergency	Life Flight WY Med Center	155.340		155.340	
VFire 21	Alternative for Life Flight commo	154.280		154.280	156.7

Natrona County	Natrona CO Fire	155.745		155.745	
	Natrona CO TAC	154.430		154.430	
	Natrona CO Parks	155.895		155.895	
Platte County	Platte CO Fire	155.805		155.805	
	Wheatland Fire	154.430		154.430	
	North Tower	153.845		153.845	162.2
Statewide	Air/Ground 1, 4	171.500		171.500	
Statewide	Air/Ground 2, 6 Primary, 3 Sec	168.675		168.675	
Statewide	Air/Ground 3 Primary, 1, 6 Sec	171.500		171.500	

WY State Forestry	WY State Forestry TAC	151.295		151.295	
	WY State Forestry Direct	151.160		151.160	
Air Ambulance/ Air Medevac	VMED28	155.34		155.34	156.7

Laramie County Fire Talkgroups				
	RX	Tone	TX	Tone
02 FDISP A	WyoLink			
02 FDISP B	WyoLink			
Tac 1	153.9275		153.9275	
Tac 2	154.16		154.16	
Tac 3	159.375		159.375	
Tac 4	154.25		154.25	
911 CHEY	155.7150 N	CSQ	153.9950 N	100
911 ALBIN	155.7150 N	CSQ	153.9950 N	192.8
911 BURNS	155.7150 N	CSQ	153.9950 N	118.8
911 CRPNTR	153.9950 N	CSQ	155.7150 N	141.3
911 HARR	155.7150 N	CSQ	153.9950 N	162.2
911 HRSCK	155.7150 N	CSQ	153.9950 N	123
02 CAT 1	WyoLink			
02 CAT 2	WyoLink			
02 CAT 3	WyoLink			
02 CAT 4	WyoLink			
*National Interoperable Channels Available				

CHANNEL NAME		RX	TONE	TX	TONE
Albany County	Albany CO Fire Direct R & B	155.760		155.760	
	Fire I Rept.	154.430		154.830	192.8
	Fire I direct	154.430		154.430	
	Fire 2	154.310		154.310	
	R&B Jelm	155.760		155.145	114.8
	R&B Rock River	155.760		155.145	192.8
Aviation	Flight Follow	168.650		168.650	110.9
*NARROWBAND	Air Guard	168.625		168.625	110.9
Aviation IA Air to Ground	WY07 - A/G 12 - Primary	167.075		167.075	
Goshen, Platte & South Med Bow	A/G 15 - Secondary	167.525		167.525	
	WY04 - A/G 10 - Primary	166.9375		166.9375	
	A/G 15 - Secondary	167.525		167.525	
Natrona Co in Cody Dispatch	WY05 - A/G 12 - Primary	167.0750		167.0750	
	A/G 13 - Secondary	167.4250		167.4250	
	A/G 35 - Secondary	167.2250		167.2250	
Natrona & Converse Co.	WY03 - A/G 15 - Primary	167.525		167.525	
	A/G 35 - Secondary	167.2250		167.2250	
	A/G 3 I - Secondary	166.7875		166.7875	
BLM					
BLM-Rawlins	Rawlins Base	168.275		168.275	
High Desert Dist. (HOD)	Elk Mountain repeater	168.275		164.250	110.9
	Flat Top repeater	168.275		164.250	123.0
	Whiskey Peak repeater	168.275		164.250	146.2
	Laramie Peak BLM-Rawlins(PR) RPT	168.275		164.250	131.8
BLM-Casper	Casper Base (Casper Mtn)	168.300		168.300	
High Plains Dist. (HPD)	Laramie Peak BLM-Casper (PR) RPT	168.300		171.725	131.8
	Pumpkin Butte RPT	168.300		171.725	110.9
BLM Tactical					
High Desert-Rawlins & Rock Springs Field Offices	High Desert Dist. -Fire 2	166.825		166.825	
High Plains-Casper Field Office	High Plains Dist. -Fire 3	167.125		167.125	
Wind River-Worland & Cody Field Offices	Wind River Dist. - Fire I	166.6375		166.6375	
Carbon County	Carbon CO Baggs	155.805	107.2	158.760	
	Carbon CO Elk Mountain	155.805		158.760	100.0
	Carbon CO Fire Direct	155.805		155.805	100.0
	Carbon CO Whiskey Peak	155.805	114.8	158.760	
Converse County	Converse CO Rural Fire	154.0700		154.0700	
	Glenrock Fire	154.340		154.340	
	Glenrock Fire TAC	154.160		154.160	

	Channel Name	RX		TX	
Goshen County	Torrington Fire	154.145		154.145	
	Lingle Fire	154.235		154.235	
	Fort Laramie Fire	154.205		154.205	
	Prairie Center Fire	154.490		154.490	
	Jay' Em Fire	154.160		154.160	
	Yoder Fire	154.040		154.040	
	Hawk Springs Fire	154.430		154.430	
	LaGrange Fire	154.830		154.830	
	Chugwater Fire	154.805		154.805	
	Veteran Fire	154.130		154.130	
	WyoLink Trucking Talk Groups:				
	MAT07				
	07 CAT 1				
	07 CAT 2				
	07 FIRE 1				
	07 FIRE 2				
Laramie County	Laramie CO Repeater	155.715		153.995	100.0
	Laramie CO SO - Repeater	155.655	100.0	154.890	
	Laramie CO Fire Direct	155.715		155.715	
	Laramie CO So - Direct	155.655		155.655	
	WyoLink Trucking Talk Groups:				
	MAT07				
	07 CAT 1				
Med-Emergency	Life Flight WY Med Center	155.340		155.340	
VFire 21	Alternative for Life Flight commo	154.280		154.280	156.7
Natrona County	Natrona CO Fire	155.745		155.745	
	Natrona CO TAC	154.430		154.430	
	Natrona CO Parks	155.895		155.895	
Platte County	Platte CO Fire	155.805		155.805	
	Wheatland Fire	154.430		154.430	
	North Tower	153.845		153.845	162.2
Statewide	Air/Ground 1, 4	171.500		171.500	
Statewide	Air/Ground 2, 6 Primary, 3 Sec	168.675		168.675	
Statewide	Air/Ground 3 Primary, 1, 6 Sec	171.500		171.500	
WY State Forestry	WY State Forestry TAC	151.295		151.295	
	WY State Forestry Direct	151.160		151.160	
Air Ambulance/ Air Medevac	VMED28	155.34		155.34	156.7

Group #1 Thunder Basin [Douglas RD]

CH	Site Name	RX	TONE	TX	TONE
1	+TBNG RPT	171.5000	103.5	164.0000	> 107.2
2	+HPD BLM RPT	172.6750	0	166.4250	> 110.9
3	MEDBOW FIRE TAC	166.5500	0	166.5500	0
4	BLM FIRE TAC 1	166.6375	0	166.6375	0
5	VFIRE 21	154.2800	0	154.2800	156.7
6	WORK 1	163.7125	0	163.7125	0
7	CC MAIN FIRE	153.9500	167.9	154.4150	151.4
8	CC TAC 2	154.2200	0	154.2200	0
9	WESTON CO TAC	151.2200	131.8	151.2200	131.8
10	WESTON CO RPT	155.7150	156.7	155.1150	156.7
11	CNVCORU	154.0700	123.0	154.0700	123.0
12	Air to Ground 31	168.7875	0	168.7875	0
13	Air to Ground 15	167.5250	0	167.5250	0
14	Air to Ground 35	167.2250	0	167.2250	0
15	VMED 28	155.3400	0	155.3400	156.7
16	AIR GUARD	168.6250	0	168.6250	110.9

Group #2 Medicine Bow Laramie Peak [Douglas RD]

CH	Site Name	RX	TONE	TX	TONE
1	+LPU RPT	173.7625	110.9	164.8000	>103.5
2	CASPER MTN	172.6750	0	166.4250	136.5
3	LARAMIE PEAK BLM	172.5875	0	164.2500	131.8
4	ROCHELLE Hills RPT	171.5000	103.5	164.0000	107.2
5	VFIRE 21	154.2800	0	154.2800	156.7
6	MEDBOW FIRE TAC	166.5500	0	166.55000	0
7	BUSBAND [D]	154.5150	0	154.5150	0
8	WORK 1	163.7125	0	163.7125	0
9	BLM FIRE 3	167.1250	0	167.1250	0
10	Platte Co. Fire [D]	155.8050	0	155.8050	0
11	Converse County Rural	154.0700	123.0	154.0700	123.0
12	Air to Ground 12	167.0750	0	167.0750	0
13	Air to Ground 15	167.5250	0	167.5250	0
14	Air to Ground 10	166.9375	0	166.9375	0
15	VMED 28	155.3400	0	155.3400	156.7
16	AIR GUARD	168.6250	0	168.6250	110.9
17	ALBANY CO SO	155.2500	192.8	155.2500	192.8
18	Air to Ground 31	168.7875	0	168.7875	0
19	Air to Ground 35	167.2250	0	167.2250	0

Group #3 Med Bow Southeast [Laramie RD/Supervisor's Office]

CH	Site Name	RX	TONE	TX	TONE
1	MB TAC	166.5500	ø	166.5500	ø
2	MBRTB Work 1 [Wide Area]	163.7125	ø	163.7125	ø
3	VFIRE 21	154.2800	ø	154.2800	156.7
4	+BCHGR P	172.3500	110.9	164.1500	>107.2
5	+LRDGR P	171.5000	110.9	164.0000	>146.2
6	+Rawlins BLM GRP	172.5875	ø	164.2500	>110.9
7	AC JELM	155.7600	114.8	155.1450	114.8
8	+Carbon County GRP	155.8050	100.0	158.7600	>141.3
9	Saratoga Fire [D]	154.4450	100.0	154.4450	100.0
10	Encampment Fire [D]	154.0550	131.8	154.0550	131.8
11	Air to Ground 10	166.9375	ø	166.9375	ø
12	Air to Ground 14	167.5000	ø	167.5000	ø
13	Air to Ground 15	167.5250	ø	167.5250	ø
14	Air to Ground 35	167.2250	ø	167.2250	ø
15	VMED28	155.3400	ø	155.3400	156.7
16	AIR GUARD	168.6250	ø	168.6250	110.9

Group #4 Med Bow Southwest [Brush Creek/Hayden RD]

CH	Site Name	RX	TONE	TX	TONE
1	MBRTB Work 1 [Wide Area]	163.7125	ø	163.7125	ø
2	Medicine Bow Fire TAC	166.5500	ø	166.5500	ø
3	Blackhall Repeater [Med Bow]	172.3500	110.9	164.1500	131.8
4	Kennaday Peak Repeater	172.3500	110.9	164.1500	107.2
5	Bridger Repeater	172.3500	110.9	164.1500	114.8
6	Spruce Mtn Repeater	171.5000	110.9	164.0000	156.7
7	Pole Mtn Repeater	171.5000	110.9	164.0000	146.2
8	Jelm Mtn Repeater [Med Bow]	171.5000	110.9	164.0000	136.5
9	Southwest Portable Repeater	172.3500	110.9	164.1500	100.0
10	Encampment Fire	154.0550	131.8	154.0550	131.8
11	Saratoga Fire	154.4450	100.0	154.4450	100.0
12	VFIRE21	154.2800	ø	154.2800	156.7
13	Air to Ground 10	166.9375	ø	166.9375	ø
14	Air to Ground 15	167.5250	ø	167.5250	ø
15	VMED 28	155.3400	ø	155.3400	156.7
16	AIR GUARD	168.6250	ø	168.6250	110.9

Glossary of Terms

Term	Definitions
Agency	An administrative division of a government with a specific function, or a non-governmental organization (e.g., private contractor, business, etc.) that offers a particular kind of assistance. A federal, tribal, state or local agency that has direct fire management or land management responsibilities or that has programs and activities that support fire management activities.
Agency Administrator	The official responsible for the management of a geographic unit or functional area. The managing officer of an agency, division thereof, or jurisdiction having statutory responsibility for incident mitigation and management. Examples: NPS Park Superintendent, BIA Agency Superintendent, USFS Forest Supervisor, BLM District Manager, FWS Refuge Manager, State Forest Officer, Tribal Chairperson, Fire Chief, Police Chief.
Area of Critical Environmental Concern (ACEC)	An area of public lands where special management attention is required to protect and prevent irreparable damage to important historic, cultural, or scenic values, fish, and wildlife resources, or other natural system or processes, or to protect life or provide safety from natural hazards.
BLM	Bureau of Land Management
BOR	Bureau of Reclamation
County and local fire service Entities	County Fire Organizations, City Fire Organizations, Joint Powers Boards, or Fire Protection Districts.
Entities (Entity)	All Federal agencies, Wyoming State Forestry Division, counties, fire districts and local fire service organizations having jurisdictional responsibility for land and resource management and protection.
Escaped Prescribed Fire	Prescribed fire that has exceeded or is expected to exceed prescription parameters or otherwise meets the criteria for conversion to wildfire. Criteria for conversion are specified in, "Interagency Prescribed Fire-Planning and Implementation Procedures Reference Guide."

Extended Attack	Actions taken on a wildfire that has exceeded the initial response.
Initial Attack (IA)	A preplanned response to a wildfire given the wildfire's potential. Initial attack may include size up, patrolling, monitoring, holding action or suppression.
Jurisdictional Entity	The Entity which has overall land and resource management, and/or protection responsibility as provided by Federal, State, or local law.
Line Officer	Managing officer, or designee, of the agency, division thereof, or jurisdiction having statutory responsibility for incident mitigation and management.
Prescribed Fire	Any fire intentionally ignited by management actions in accordance with applicable laws, policies, and regulations to meet specific objectives.
Protecting Entity	An entity responsible for providing direct incident management within a specific geographical area pursuant to its jurisdictional responsibility or as specified and provided by contract, cooperative agreement, etc.
Protection Area Maps	Official maps of the annual operating plans. Example: Maps showing protection area responsibilities.
Reciprocal Fire Protection	A Supporting Entity will take initial attack in support of the Protecting Entity. The Protecting Entity will not be required to reimburse the Supporting Entity for costs incurred following the initial dispatch of any ground resources to the fire for the duration of the reciprocal period as defined in this plan, not to exceed 24 hours.
Reimbursable Fire Protection	Fire suppression resources will be paid for by the requesting Protecting Entity per the conditions in the Wyoming Interagency Fire Management Agreement, Wyoming Interagency Cooperative Fire Management Agreement and this Annual Operating Plan.
Research Natural Area (RNA)	A physical or biological unit in which current natural conditions are maintained insofar as possible. These conditions are ordinarily achieved by allowing natural, physical and biological processes to prevail without human intervention. However, under unusual circumstances, deliberate manipulation may be utilized to maintain the unique feature that the Research Natural Area was established to protect.

State Lands	All lands under the jurisdiction of the Board of Land Commissioners.
State Park Lands	All lands under the jurisdiction of Wyoming State Parks, Historic Sites & Trails.
Structure Fire Protection	The protection of homes or other structures from an active wildland fire.
Supporting Entity	An entity providing suppression or other support and resource assistance to a Protecting Entity.
Suppression	A wildfire response strategy to "put the fire out", as efficiently and effectively as possible, while providing for firefighter and public safety.
Unit Administrator Group	A group consisting of all Jurisdictional Entities, consisting of two or more individuals assigned administrative responsibilities, to make coordinating decisions and recommendations within the framework of the Annual Operating Plan.
Wildfire	An unplanned, unwanted wildland fire including unauthorized human-caused fires, escaped wildland fire use events, escaped prescribed fire projects, and all other wildland fires where the objective is to put the fire out.
Wildland Fire	Any non-structure fire that occurs in vegetation or natural fuels. Wildland fire includes prescribed fire and wildfire.
Wildland Fire (Unplanned Ignition)	Any non-structure fire, other than prescribed fire, that occurs in the wildland.
Wildland Fire Decision Support System (WFDSS)	The Wildland Fire Decision Support System (WFDSS) is a web-based decision support system that provides a single dynamic documentation system for use beginning at the time of discovery and concluding when the fire is declared out. WFDSS is the decision support documentation platform for all federal wildfires. WFDSS allows the Agency Administrator to describe and assess the fire Situation, develop Incident Objectives and Requirements, develop a Course of Action, evaluate Relative Risk, complete an Organization Assessment, document the Rationale and publish a Decision.

<u>Wildland Fire Situation Analysis (WFSa)</u>	A decision making process that evaluates alternative management strategies against selected safety, environmental, social, economical, political, and resource management objectives as selection criteria.
<u>Wilderness Study Area (WSA)</u>	An area under study for possible inclusion as a Wilderness Area in the National Wilderness Preservation System. These areas are roadless, undeveloped, federal lands that retain their primeval character and influence, without permanent improvements or human habitation, and are managed to preserve their natural conditions.
<u>Wildland Urban Interface (WUI)</u>	The line, area, or zone where structures and other human development meet or intermingle with undeveloped wildland or vegetative fuels. Describes an area within or adjacent to private and public property where mitigation actions can prevent damage or loss from wildfire.
<p>Wyoming Greater Sage-Grouse (GRSG)</p> <p><i>*These terms and definitions were pulled directly out of the:</i></p> <p>Wyoming Greater Sage-Grouse RMP/LRMP Amendments</p>	<p><i>Core Habitat:</i> Sage-grouse core habitat (as defined in the WY EO 2015-4) is one of two components of Sage-grouse Priority Habitat Management Areas. Core habitats are state-designated areas identified as the most important for GRSG (Greater Sage-Grouse) and include breeding, late brood-rearing, winter concentration areas. It does not include known, migration or connectivity corridors. Sage-grouse core habitat plus connectivity habitat together make up Sage-grouse Priority Habitat Management Areas.</p> <p><i>General Habitat Management Areas:</i> Occupied (seasonal or year-round) habitat outside of priority habitat. These areas have been identified by the BLM in coordination with respective state wildlife agencies.</p> <p><i>Priority Habitat Management Area:</i> Sage-grouse priority habitats are areas that have the highest conservation value to maintaining or increasing Sage-grouse populations. These areas would include breeding, late brood-rearing, winter concentration areas, and where known, migration or connectivity corridors. Sage-grouse Priority Habitat Management Area includes core plus connectivity habitat.</p>

WILDLAND FIRE MANAGEMENT OPERATING PLAN

PREAMBLE

Plan is hereby made and entered into by and between the parties pursuant to the current Master Cooperative Wildland Fire Management and Stafford Act Response Agreement (Agreement) and the 23 state/county interagency agreements referenced in their respective sub-geographic operating plan. This Sub-Geographic Operating Plan further referenced as OP, inclusive of any referenced attachments of Exhibits, is tiered to the Agreement. A formal modification to the Agreement is unnecessary but shall not contradict the Agreement.

PURPOSE

This is a Sub-Geographic Area Operating Plan (OP) meant to address issues affecting cooperation, interagency working relationships and protocols, financial arrangements, and joint activities across the State of Wyoming. The OP details operating procedures applicable across the State and those applicable to specific districts. Procedures applicable to specific districts are included in Attachments (A, B, C, D, and E), District Specific Procedures, which are incorporated herein by this reference. Signatories to this OP agree to the procedures applicable across the State and to those applicable to their specific district.

RECITALS

Stafford Act Responses and related National Response Framework (NRF) activities will be accomplished utilizing established dispatch coordination concepts. Situation and damage assessment information will be transmitted through established fire suppression intelligence channels. Jurisdictional Entities are responsible for all planning documents i.e., land use, resource and fire management plans and decision support documents, for a unit's wildland fire and fuels management program. Protecting Entities implement the actions documented and directed by the appropriate planning documents and decision support documents for initial and extended attack on wildfire incidents. They provide the supervision and support including operational oversight, direction and logistical support to Incident Management Teams.

INTERAGENCY COOPERATION

Interagency Dispatch Centers:

The entities agree to participate in the neighborhood dispatch system. The Entities give authority to the interagency dispatch center to provide the services requested in support of the appropriate center's charter and operating plan. Interagency Dispatch Centers will work together to ensure a positive communication flow and closest available resources will be utilized within capability. For specifics, see individual district attachments.

Mobilization Process for State and County Resources:

When resources, stated in IROC, are ordered from their local dispatch center for initial attack, it is their responsibility to notify their respective Interagency Dispatch Center of their assignment. It is also their responsibility to notify the respective Interagency Center when they return home.

Standards:

Non-Federal Firefighter Qualifications:

1. Qualifications for local resources utilized for fire suppression within that respective county will meet local standards.
2. Except for County-to-County resources, all resources ordered through an interagency dispatch center will meet NWCG 310-1 standards. Certification for positions are in accordance with the Wyoming Redcard Manual. The BLM National Office has mandated that the following statement be in all fire Operating Plans that include BLM lands nationwide:

BLM will ensure the following minimum required elements are included in the agreement:

1. Local fire department personnel responding to incidents on BLM lands must:
 - a. Be 18 years of age or older
 - b. Have and use the required personal protective equipment (PPE) found in the Interagency Standards for Fire and Fire Aviation Operations ("Red Book" Ch.7);
 - c. Have a basic level of wildland fire training. The National Wildfire Coordinating Group (NWCG) course S-190 and S-130 are recommended, both courses can be modified to fit local needs.
2. Pre-identified incident communication protocols will be established and followed (e.g., frequencies plans, points of contact, and interoperable radio hardware).
3. The Incident Command System (ICS) will be used to manage all incidents.

The minimum elements are critical to ensure safe and effective response to wildfires. While on a Federal incident, local fire department leadership is responsible to only deploy personnel that are in compliance with these minimum elements.

PREPAREDNESS

Protection Areas and Boundaries:

If applicable, each entity will provide a Protection Area Map to be included in district specific attachments.

Reciprocal (Mutual Aid) Fire Assistance: Mutual Aid Period will be up to 24 hours and counties will provide their mutual aid periods in their respective sub-geographic OP. For incidents that exceed the reciprocal period, no mutual aid will apply, and all costs will be collected from the beginning of the incident and it should be noted in the Cost Share Agreement

WSFD:

WSFD shall assume cost of its ground related resources. This shall not be construed as automatic 24- hour dispatch. Any deviation or variation will be at the discretion of the WSFD Fire Duty Officer or their designee. An exception to the 24-hour reciprocal period (Mutual Aid) is the Wyoming State Helitack, provisions are as follows:

1. Wyoming State Forestry Division (WSFD) shall assume costs of its ground initial attack resources
2. To promote safe and aggressive initial attack, fires on all jurisdictions that pose an imminent threat to State and/or Private lands: WSFD shall assume all associated costs of the Wyoming State Helitack for a full operational period to be determined by the WSFD Fire Duty Officer. Federal/other out of state personnel assigned to the Helitack will be considered Reimbursable Assistance.
3. Fires on Federal lands or those fires that pose no imminent threat to State and/or Private land, WSFD may seek reimbursement for costs associated with the Wyoming State Helitack.
4. Rates for the Helicopter and supporting costs shall be distributed upon execution of the contract.

Agreements/Memorandum of Understanding (MOUs) for Fire Suppression Responsibilities:

Agreements/MOUs between entities establishing fire suppression responsibilities will be recognized by this Operating Plan. Entities providing this protection may represent the interest of the jurisdictional entity whose lands are being protected. Unless specified otherwise, the lands protected under Agreement/MOU will be afforded the same conditions/terms as the protecting entity's lands (i.e., mutual aid periods, etc.). All signatories to this Operating Plan will be notified, in writing, of changes or modifications to fire suppression responsibilities by the entity providing protection at the time of an approved Agreement/MOU. On fires that threaten, or involve, the Wildland Urban Interface, the County's Community Wildfire Protection Plan should be referred to for suppression priorities and other information that could prove beneficial to the suppression efforts.

Joint Projects and Project Plans:

These projects may involve such activities as prescribed fire/fuels management, preparedness, fire analysis/planning, rehabilitation, training, prevention, public affairs, and other beneficial efforts in support of interagency fire management. Implementation of such projects will require a separate, local agreement, or other appropriate written documentation executed by the authorized signatures of the involved Parties. This may include a Supplemental Project Agreement.

Fire Prevention/Education /Mitigation:

The Entities agree to cooperate in the development and implementation of fire prevention/education/mitigation programs. Entities will collaborate on ways to prevent unwanted wildfires. This program will have an overarching goal of lessening the risk of wildfire impacts to the public and private land and structures especially in the WUI.

Fire Restrictions:

Fire Restrictions and/or Closures will be communicated and coordinated between the Entities to include initiating, implementing, and lifting.

Prescribed Fire (Planned Ignitions) and Fuels Management:

1. Fuels management and prescribed fire projects will be coordinated with the Entities to this agreement.
2. Wildland fires(s) resulting from escaped prescribed fires at the direction or under the supervision of one of the Entities to this agreement shall be the responsibility of that Entity. All suppression costs exclusive of reciprocal periods shall be borne by the responsible Entity. The responsible agency on federal lands shall be the jurisdictional agency. An Entity may take appropriate suppression action when lands under its protection responsibility are involved in or threatened by the fire. Such suppression action may be taken on its own initiative or at the request of the responsible Entity. An Entity may take appropriate suppression action, at the request of the responsible Entity, when lands under its protection are not involved in or threatened by the fire. The responsible Entity shall reimburse the other Entity for all suppression costs incurred in accordance with this clause.
3. Escaped prescribed fires ignited by individual(s) not party to this agreement will be considered as wildland fires requiring suppression action under the terms and conditions of this agreement.
4. Entities agree to share and reimburse, according to the rates established in the Wyoming Wildland Fire Resource Mobilization Guide for resources used on prescribed fire projects, based on availability, qualifications, and need. For Forest Service prescribed fire projects, a separate agreement will be executed.

Smoke Management:

Within their authorities, the Parties to this Agreement agree to cooperate in smoke management efforts. The Wyoming Department of Environmental Quality, Air Quality Division, Smoke Management Program has access to the Wyoming State Forestry Division Wildfire Reporting Program and will assist in the coordination of smoke management within the state in support of the Wyoming Air Quality Standards & Regulations Chapter 10, Section 4, Smoke Management Requirements.

OPERATIONS**Fire Notifications and Reporting:**

All fires and initial action on or near private, State or Federal land under the protection of an Entity to this agreement will be reported as soon as possible to the protecting Entity through the appropriate Interagency Dispatch Center and further instructions agreed upon. The appropriate Interagency Dispatch Center will in turn, notify the appropriate Entity of all fires within their respective fire District boundaries.

Initial Attack:

If one or more Entities to this agreement arrive on initial attack, the first Entity on the scene will assume command or what is mutually agreed upon between those entities first arriving to the incident. Once protection responsibilities are established, the protecting Entity will either assume command or request a supporting Entity to do so.

Independent Action on Lands Protected by Another Entity:

Nothing herein shall prohibit any Entity, on its own initiative, with notification and coordination with the protecting Entity and without requesting reimbursement from going upon lands known to be protected by another Entity to engage in suppression of wildland fires, when such fires are a threat to lands within that Entity's protection responsibility.

Special Management Considerations:

Special provisions will be defined in district attachments to the Operating

Plan Heavy Equipment Use

Heavy equipment use special provisions will be defines in district attachments to the Operating Plan.

Use of Aerial Retardant on Federal Lands

Pursuant to agency policy, each federal management unit has identified areas where aerial retardant may not be applied, unless a decision by the Incident Commander determines that human life or safety is threatened, and retardant will mitigate that threat. These areas are identified on a map for each unit and may include areas within 300 feet of waterways (streams and lakes); where threatened, endangered, or sensitive species habitat occurs that could be impacted by retardant; and/or where cultural resources exist that have been identified for exclusion from retardant. If retardant is applied in these areas, the agency administrator must be notified for reporting requirements to be met.

Special Lands Designations

On Wilderness lands (Congressional Designated, Wilderness Study Areas, and Recommended/Proposed/Potential Wilderness), and Areas of Critical Concerns (BLM) special tactics must be used. No motorized equipment may be used without proper approval including chainsaws, portable pumps and helicopter landings. Minimum Impact Suppression Tactics (MIST) will be utilized in order to minimize adverse impacts of management actions. Fire management resources will be advised of this and briefed on MIST. Sage Grouse - General Habitat, Priority Habitat and Sagebrush Focal Areas are identified as high value areas to protect from disturbances from wildfires. Aggressive actions and coordination will be taken on all wildfire incidents with these identified areas.

Decision Process:**Escaped Fires or Fires Threatening Other Jurisdictions**

The Protecting Agency taking fire suppression action will contact the other protecting Entities as soon as possible after a fire escapes or threatens to escape initial attack near intermingled ownership (defined as different ownership within 1 mile of the fire or it is anticipated that other ownerships may be involved) and a Unit Administrator Group (see Glossary) will be assembled by the hosting Entity to represent the jurisdictional Entities involved with that fire. For a list of the designated representatives for creating a unit administrator group, see the directory in (Attachment A, B, C, D, and E)

1. Guidelines for assembling the Unit Administrator Group:
 - a. A wildland fire that escapes initial attack or threatens other jurisdictions.
 - b. The fire is to be determined at a Type III or higher complexity level.
 - c. Containment is not anticipated before the next burning period.
2. The Unit Administrator Group's functions is:
 - a. To participate in development and approval of wildfire decision documents for managing a fire incident in accordance to each agency's policy, including mop-up, suppression repair, rehab, and patrol.
 - b. To recommend to the appropriate Line Officer(s) the level at which the incident should be managed.
 - c. To prepare a Delegation of Authority for Line Officer(s) signature.
 - d. To act as the representative for the respective Entity.
 - e. To develop incident management objectives and agree on management actions needed.
 - f. To initiate a written cost share agreement for Line Officer(s) approval with signatures prior to the end of the fire. (See Example in Wyoming Wildland Fire Resource Mobilization Guide)
 - g. To agree to all expenditures whenever the suppression plan must be modified including mop-up, rehab and patrol after demobilization of the fire.
 - 1) The Incident Commander/Unified Command will provide the Unit Administrator Group with an estimated fire cost daily.
 - 2) The Incident Commander/Unified Command and the Unit Administrator Group will reach mutual agreement when the fire situation is such that the group can be demobilized.

Delegation of Authority:

It is recognized that initial attack and rapidly expanding incidents often involve multi-jurisdictions. Determining the appropriate jurisdictions and obtaining delegations of authority in an efficient and effective manner is often difficult and may be further hampered by the remoteness of incidents in relationship to Entities having authority and jurisdictional responsibility.

The Entities which are party to the Operating Plan agree that initial attack delegation will be valid until a qualified incident commander from the entity having jurisdiction is on scene, or a revised or updated incident specific delegation of authority is signed. The Incident Commander being delegated authority should be confirmed through the dispatch log for that position from the Interagency Dispatch Center. Incidents that have been declared as exceeding initial attack and transition to extended attack should have an incident specific delegation of authority in place as soon as possible.

Preservation of Evidence/Fire Cause Determination:

Each Entity is responsible for investigating and taking appropriate law enforcement action for all fires on lands under their jurisdiction. The initial attack Incident Commander will take all responsible precautions to preserve evidence found, including protection of the area of origin until such time as the fire origin and cause investigation occurs. Entities shall render mutual assistance in investigation

and law enforcement activities and in court prosecutions to the fullest extent possible. Each Entity shall be responsible for fire-related law enforcement activities on wildfires that originate on their respective lands. To the extent permitted by Federal and State law the protecting Entity will provide investigation files relative to the fire to the Jurisdictional Entity for legal action and/or prosecution.

USE AND REIMBURSEMENT OF INTERAGENCY FIRE RESOURCES

Cost Share Agreement:

In situations where an incident encompasses land under the protection or jurisdictional responsibility of more than one Entity and the fire has exceeded the mutual aid period, a cost share agreement should be initiated prior to fire being declared controlled. If beyond the mutual aid period, it is recommended that agencies document why a cost share was not used.

For incidents that go beyond the reciprocal period (mutual aid) it should be noted in the Cost Share Agreement that reciprocal (mutual aid) period will not apply; all costs will begin at the start of the incident, unless otherwise specified by an individual district attachment. (i.e., For the sake of this cost share agreement, all cost will be collected from the beginning of the incident and no mutual aid period will apply.)

Private Lands:

Costs associated with the protection of privately owned land and structures are the responsibility of the local Entity that has jurisdiction for the private property.

Costs associated with the suppression of wildland fire on private land or structure protection of private structures against an active threat from an ongoing wildland fire are the responsibility of the protecting entity that has jurisdiction for that private property. These costs may be considered for inclusion in the cost-share agreement for a wildland fire incident.

Federal Lands w/Private Structures:

The structure protection of privately owned structures on federal lands against an active threat from an ongoing wildland fire are the responsibility of the protecting local Entity that has jurisdiction for the private structures. Structure protection responsibilities of the protecting local

Entity includes actions taken directly on the structure or the immediate area surrounding the structure. The federal agencies will be responsible for the cost associated with keeping the fire from reaching the structures. These costs may be considered for inclusion in the cost-share agreement for a wildland fire incident.

State Trust Lands w/Private Structures:

The structure protection of privately owned structures on state trust lands against an active threat from an ongoing wildland fire are the responsibility of the protecting local fire service Entity that has jurisdiction for the private structures. Structure protection responsibilities of the protecting local fire service Entity include actions taken directly on the structure of the immediate area surrounding structure. Wyoming State Forestry Division will be responsible for costs associated with keeping the fire from reaching the structures. These costs may be considered for inclusion in the cost-share agreement for a wildland fire incident.

Training:

The Entities party to this agreement will coordinate wildland fire training locally, within the county, state and the Geographic Area.

Communication Systems:

Communication frequencies to be used for initial attack are included in each district's attachment. All Entities will utilize the current year Standard Air to Ground naming convention adopted by the National Interagency Incident Communication Division. All Entities to this agreement give permission for the use of their respective entities radio frequencies for emergency use only.

Aviation Operations:

1. Aerial resources may be used with prior approval of the jurisdictional Entity unless otherwise specified under "Special Management Considerations" of this plan.
2. Aerial resources will be paid for by the requesting Entity if prior approval has not been obtained.
3. Air to air and air to ground frequencies with designated ground contacts need to be established with dispatch.
4. Aviation use will be requested through the appropriate interagency dispatch center.

Billing Procedures:

A. Out of State:

1. Federal Agencies will not bill each other for fire suppression. See Section C for State and County billings.
2. When non-federal resources respond to incidents outside the State of Wyoming, bill should be submitted to WSFD Headquarters.
3. Wyoming State Forestry Division will audit, may reimburse, and forward all completed bills for services to the Forest Service under these qualifying conditions:
 - I. When non-federal resources respond to incidents which are outside the State of Wyoming but are within USDA Forest Service Jurisdiction.
 - II. When the USDA Forest Service is the Lead Agency for Payment. All completed bills will then be sent to the appropriate Forest Service at the address listed in Section C.
4. When non-federal resources respond outside the State of Wyoming to incidents that are under US DOI Jurisdiction or where the US DOI is the Lead Agency for Payment, Wyoming State Forestry Division will audit, may reimburse, and forward all completed bills for services to the appropriate DOI Agency at the address listed below in Section C.
5. Payment Due Dates: All bills will have a payment due date 30 days after the date of issuance. If payment cannot be made before the 30 days expire, then a 30-day extension, with oral or written justification, may be requested. Voucher difference statements will accompany any payment made that is different than the amount billed.
6. Disputed Billings: Written notice that a bill is contested will be mailed to the billing agency within 30 days of issuance of the final bill and will fully explain the area of dispute. Contested items will be resolved within the designated waiver period.
7. All supporting Entities are subject to examination and audits.
8. In order to receive EFT payments, Wyoming counties shall register in SAM, www.sam.gov, and follow the instructions online.

B. In-State:

1. When State or County resources are used and the fire management activity is within the State of Wyoming, the State or County will bill either: WSFD or the protecting host unit.
 2. When the State is the jurisdictional Agency, the Federal Agencies will submit their individual billings to the State and the State will reimburse each individual Agency. When the County is the jurisdictional entity, the Federal Agencies may submit their individual billings to the County and the County will reimburse each individual Agency.
 3. Payment for Wyoming State/County resources will be made direct to the appropriate State/County identified in the billing. The State will coordinate billing questions or disputes with the appropriate County.
-

- C. **Billing Addresses:** All bills for services provided to the Wyoming State Forestry Division or to Counties will be submitted to addresses identified in the Appropriate Operating Plans or as listed below:

All bills for services provided to **Wyoming State Forestry Division** will be submitted to:

Wyoming State Forestry Division
Headquarters Office
5500 Bishop Blvd.
Cheyenne, WY 82002

All bills for services provided to a **County in Wyoming:**

Refer to the Wyoming Wildland Fire Resource Mobilization Guide on the following website for the County are you to bill: <http://wsfd.wyo.gov/fire-management/fire-business>

All bills for services provided to the **Bureau of Reclamation** will be mailed to:

Environmental Division Manager
Bureau of Reclamation, Dakotas Area Office
P.O. Box 1017 Bismarck,
ND 58502

All bills for services provided to the **Rocky Mountain Region - Forest Service** will be mailed to:

USDA Forest Service, Rocky Mountain Region
Attn: Incident Business - Regional Safety, Fire and Aviation Management Office 1617
Cole Boulevard, Building 17
Lakewood, CO 80401-3305

All bills for services provided to the **Intermountain Region - Forest Service** will be mailed to:

USDA Forest Service, Intermountain Region
Attn: Incident Business - Regional Budget Office
324 25th Street
Ogden, UT 84401

All bills for services provided **out of state** to the **DOI Department of Interior/BLM** will be mailed to:

BLM Wyoming State office
Attn: Fire Program and Management Analyst
5353 Yellowstone Road
Cheyenne, WY 82009

All bills for services provided **in state** to the **DOI Department of Interior/BLM** will be mailed to appropriate BLM WY District:

BLM High Plains District Attn:
Fire Management Officer 2987
Prospector Drive
Casper, WY 82604

BLM Wind River/Bighorn Basin District
Attn: Fire Business Specialist
101 S. 23rd Street
Worland, WY 82401

BLM High Desert District
Attn: Fire Business Specialist
280 Highway 191 North Rock Springs, WY 82901

All bills for services provided to the **DOI Department of Interior/NPS Intermountain Region** will be mailed to:

NPS - Intermountain Region
Attn: Fire Budget Analyst 12795 W. Alameda Parkway
Lakewood, CO 80228

All bills for services provided to the **DOI Department of Interior/BIA** will be mailed to:

Bureau of Indian Affairs - Rocky Mountain Region
Branch of Fire &
Forestry Attn: Budget
Analyst 2021 4th Avenue
North Billings, MT 59101

All bills for services provided to the **DOI Department of Interior/FWS** will be mailed to:

US Fish & Wildlife Service
Mountain Prairie
Region 6 134 Union
Blvd, Suite 300
Lakewood, CO 80226

- D. The non-federal Entities of Wyoming are cooperators, not contractors. Reference the Wyoming Wildland Fire Resource Mobilization Guide (Mini Mob Guide) for Wyoming Firefighters Pay Plan and Equipment Use Rates. Emergency Equipment Rental Agreements will only be executed for equipment not listed in above.
- E. The Jurisdictional Entity is not obligated to reimburse the Supporting Entity for costs incurred during the Reciprocal (Mutual Aid) period unless otherwise specified in a cost share agreement.
- F. Fire Numbers: Entities will share their respective individual fire numbers for cross referencing purposes.
- G. Billing Estimates/Time Frames: Agencies will submit invoices within 180 days of the demobilization of the incident. Extensions beyond 180 days for invoice submittal must be presented in writing to the reimbursing agency. It should be noted that some categories of expenses may often require subsequent billings outside of the 180-day period, such as: outstanding cost shares, claims, aircraft expenses, and fire cache costs.

Operating plans will include contact information for written requests for extensions. Absent a written extension of time granted by the reimbursing agency, the final itemized bill should be submitted to the reimbursing agency within 180 days of the demobilization of the incident. After a final billing has been sent, and if additional costs are identified, a supplemental billing may be issued if agreeable to applicable Parties.

Each Party to this Agreement will strive to provide appropriate Parties of an estimate of the amount of reimbursable bills they expect to submit within 90 calendar days in each reimbursable action.

H. **Billing Content:** A separate bill will be submitted for each fire. The following items will be included as a minimum for each bill, noting that a resource order is not always required or available in order for a bill to be valid. Provide as a minimum on each invoice/bill:

- Agency name, address, phone number, and agency financial contact,
- Invoice or bill number
- Agreement number
- Incident name and number
- Dates of the incident covered by the billing,
- Location and jurisdictional unit
- Appropriate Firecode or charge code.
- Summary cost data for the amount being billed.

Summary data may include but is not limited to, a list of personnel, travel, and equipment expenses; and a listing by vendor name and amount spent for supplies and services procured. Generally, cost source documents will not be required unless summary cost data is disputed, there is a Fire Management Assistance Grant (FMAG), or unless specific agency regulations require cost source documents.

At times, supplemental information, summary data or additional billing documentation may be requested and provided if agreed upon by the Parties. The process for handling such requests should be documented in the Operating Plan.

For out of state resources used on state or private land incidents, their bills will be sent to the address below. Wyoming State Forestry Division will either make payment or forward the bill to the appropriate Entity for payment.

**Wyoming State Forestry Division 5500
Bishop Blvd.
Cheyenne, WY 82002**

Cost Recovery:

Authority to recover suppression costs and damages from those responsible for causing a fire varies depending on contracts, agreements, permits and applicable laws. As soon as possible after a fire, the Authorized Representatives of affected Parties will attempt to reach mutual agreement on the strategy that will be used to recover suppression costs and damages from the individuals responsible for such costs and damages. If possible, all costs should be determined prior to the initiation of cost recovery efforts. Such strategy may alter interagency billing procedures, timing and content as otherwise provided in this Agreement. As authorized by law, any Party may independently pursue civil actions against individuals to recover suppression costs and damages, though adequate notice should be provided the other Parties to the Agreement. In those cases where costs have been recovered from individuals or parties, reimbursement of initial attack, as well as suppression costs to the extent included in the recovery, will be made to the Party taking reciprocal action, as authorized by law.

GENERAL PROVISIONS

Personnel Policy:

Employees of the Entities to this Agreement shall be subject to the personnel rules, law and regulations of their respective Entity, unless they are employed temporarily by another Entity to this Agreement and the authority under which such temporary employment is authorized provides that such employees shall be subject to the employing Entity's personnel laws and regulations.

Modifications:

Modifications within the scope of this Agreement shall be made by mutual consent of the Entities, by the issuance of a written modification request with a minimum of 20-day notice, signed and dated by all

Entities, prior to any changes being performed. No Entity is obligated to fund any changes not properly approved in advance.

Annual Review:

This Operating Plan is reviewed annually. Wyoming State Forestry Division will be the lead Entity responsible for preparing the plan.

Duration of Agreement:

This Operating Plan remains in effect until superseded. This plan becomes effective on the date signed by each Entity. It may be terminated upon 20 days written notice to all Entities.