

LAND DESCRIPTION

A TRACT OF LAND SITUATE IN PORTIONS OF THE WEST HALF (W^{1/2}) OF SECTION 26 AND SOUTHEAST QUARTER (SE^{1/4}) OF SECTION 27, T. 14 N., R. 65 W., 6TH P.M., LARAMIE COUNTY, WYOMING, MORE PARTICULARLY DESCRIBED AS FOLLOWS:

BEGINNING AT A POINT ON THE NORTH-SOUTH CENTERLINE OF THE SOUTHWEST QUARTER OF SAID SECTION 26 A SET 1 1/2" ALUMINUM CAP SAID POINT BEARS S. 00°00'07" E. A DISTANCE OF 285.94 FEET FROM THE CENTER WEST (C-W 1/6) CORNER A SET 2 1/2" ALUMINUM CAP; THENCE S. 00°00'07" E. A DISTANCE OF 1565.19 TO A FOUND 2" ALUMINUM CAP; THENCE S. 88°48'47" W. A DISTANCE OF 1390.29 FEET TO A POINT; THENCE N. 00°05'33" E. A DISTANCE OF 683.03 FEET TO A POINT; THENCE N. 89°12'29" W. A DISTANCE OF 556.79 FEET TO A POINT; THENCE S. 60°46'04" W. A DISTANCE OF 75.45 FEET TO A POINT; THENCE S. 00°53'22" E. A DISTANCE OF 285.76 FEET TO A FOUND ALUMINUM CAP; THENCE S. 88°54'30" W. A DISTANCE OF 524.34 FEET TO A POINT; N. 58°40'07" E. A DISTANCE OF 319.28 FEET TO A POINT; THENCE N. 43°28'32" E. A DISTANCE OF 344.32 FEET TO A POINT; THENCE N. 22°04'31" E. A DISTANCE OF 127.66 FEET TO A POINT; THENCE N. 04°24'25" W. A DISTANCE OF 165.95 FEET TO A POINT; THENCE N. 65°14'54" E. A DISTANCE OF 69.44 FEET TO A POINT; THENCE N. 08°29'13" W. A DISTANCE OF 48.65 FEET TO A POINT; THENCE N. 43°43'58" W. A DISTANCE OF 57.66 FEET TO A POINT; THENCE N. 00°07'26" W. A DISTANCE OF 420.65 FEET TO A POINT; THENCE S. 89°54'13" E. A DISTANCE OF 1971.27 FEET TO THE POINT OF BEGINNING.

SAID PARCELS CONTAINS 64.85 ACRES MORE OR LESS.

LEGEND

- SET #5 X 24" LONG REBAR WITH 1 1/2" ALUMINUM CAP STAMPED "PLS 9834".
- FOUND 1 1/2" ALUMINUM CAP
- ⊙ FOUND IRON PIPE UNLESS OTHERWISE NOTED.
- (M) INDICATES MEASURED DATA THIS SURVEY.
- (R) INDICATES RECORD DATA PER THE RECORD OF SURVEY ON FILE WITH THE LARAMIE COUNTY CLERK'S OFFICE.

NOTES

- 1.) BASIS OF BEARINGS AND COORDINATE VALUES ARE BASED ON WYOMING STATE PLANE EAST ZONE NAD83. ALL DISTANCE AS SHOWN ARE U.S SURVEY FEET GROUND.
- 2.) THE SUBJECT PROPERTY DOES NOT FALL WITHIN THE SPECIAL 100 YEAR FLOOD HAZARD AREA AS SHOWN ON F.E.M.A. MAP PANEL No. 56021C1119F DATED JANUARY 17, 2007.
- 3.) ALL LOT AND TRACT CORNERS TO BE MONUMENTED WITH A 1 1/2" ALUMINUM CAP ON #5 X 24" REBAR STAMPED "P.L.S. 9834 AND APPROPRIATE DATA.

LINE #	BEARING	DISTANCE
L1	N22°04'31"E	127.66
L2	N04°24'25"W	165.95
L3	N65°14'54"E	69.44
L4	N08°29'13"W	48.65
L5	N43°43'58"W	57.66
L6	S60°46'04"W	75.45

CERTIFICATE OF SURVEYOR

I, COTTON D. JONES, A REGISTERED PROFESSIONAL LAND SURVEYOR IN THE STATE OF WYOMING, HEREBY STATE, TO THE BEST OF MY KNOWLEDGE, INFORMATION AND BELIEF, THAT THIS BOUNDARY SURVEY WAS PREPARED FROM FIELD NOTES TAKEN DURING AN ACTUAL SURVEY MADE BY ME OR UNDER MY DIRECT SUPERVISION DURING SEPTEMBER 2025; AND THAT THIS MAP CORRECTLY SHOWS THE RESULTS OF SAID SURVEY AND THAT THE MONUMENTS FOUND OR SET ARE AS SHOWN.

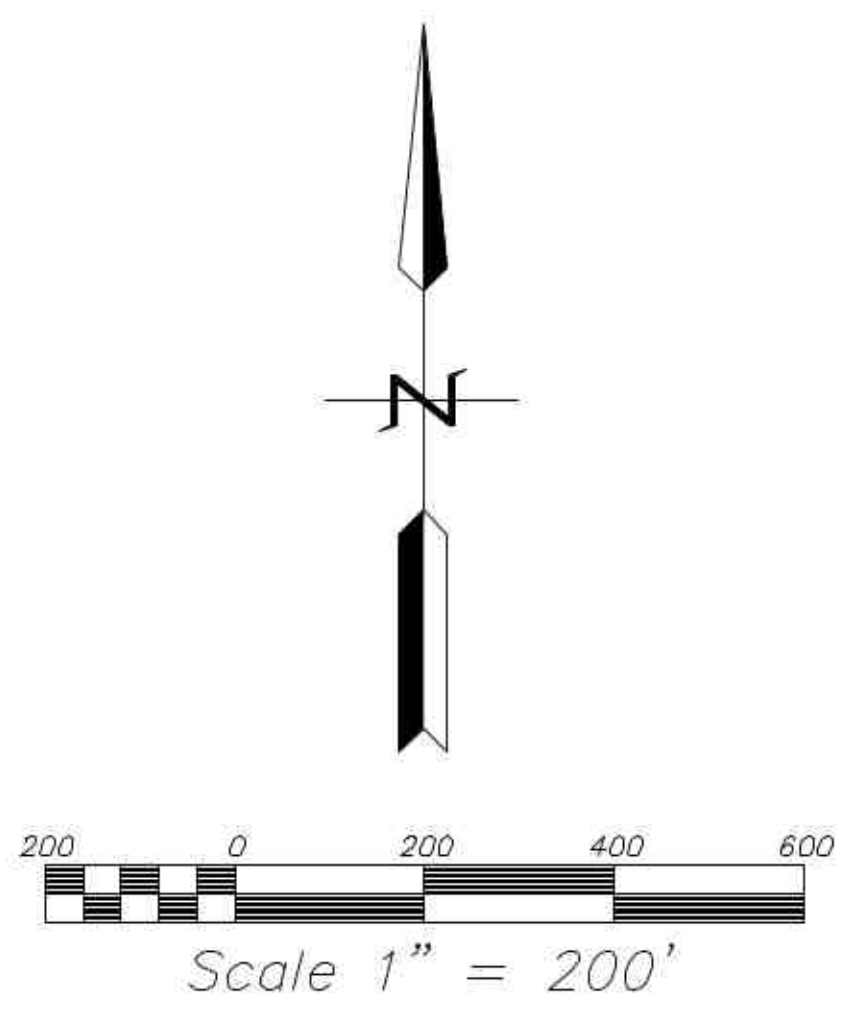
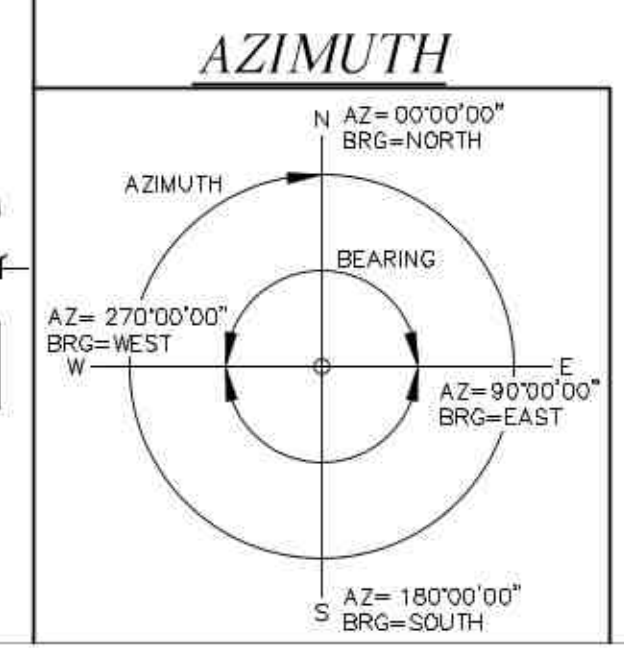
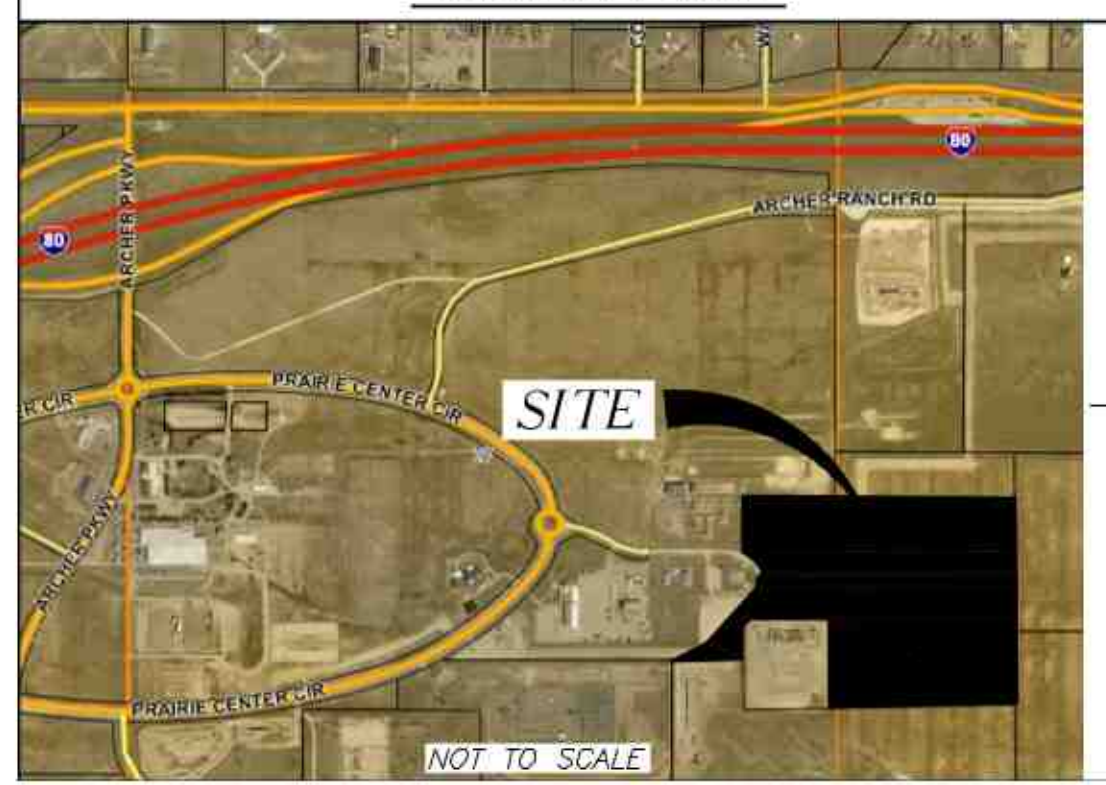


RECORD OF SURVEY

FOR PORTIONS OF THE WEST HALF (W^{1/2}) OF SECTION 26 AND SOUTHEAST QUARTER (SE^{1/4}) OF SECTION 27, T. 14 N., R. 65 W., 6TH P.M., LARAMIE COUNTY, WYOMING.

PREPARED OCTOBER 2025

VICINITY MAP



JONES LAND SURVEYING, INC.
 6750 Say Kally Rd., Cheyenne, WY 82009
 Licensed in: WY, CO, MT, SD, ND, ID, UT, NV, NM
 Ph: 307-637-7107
 Cell: 307-630-8550
 Email: cotton.jones@msn.com