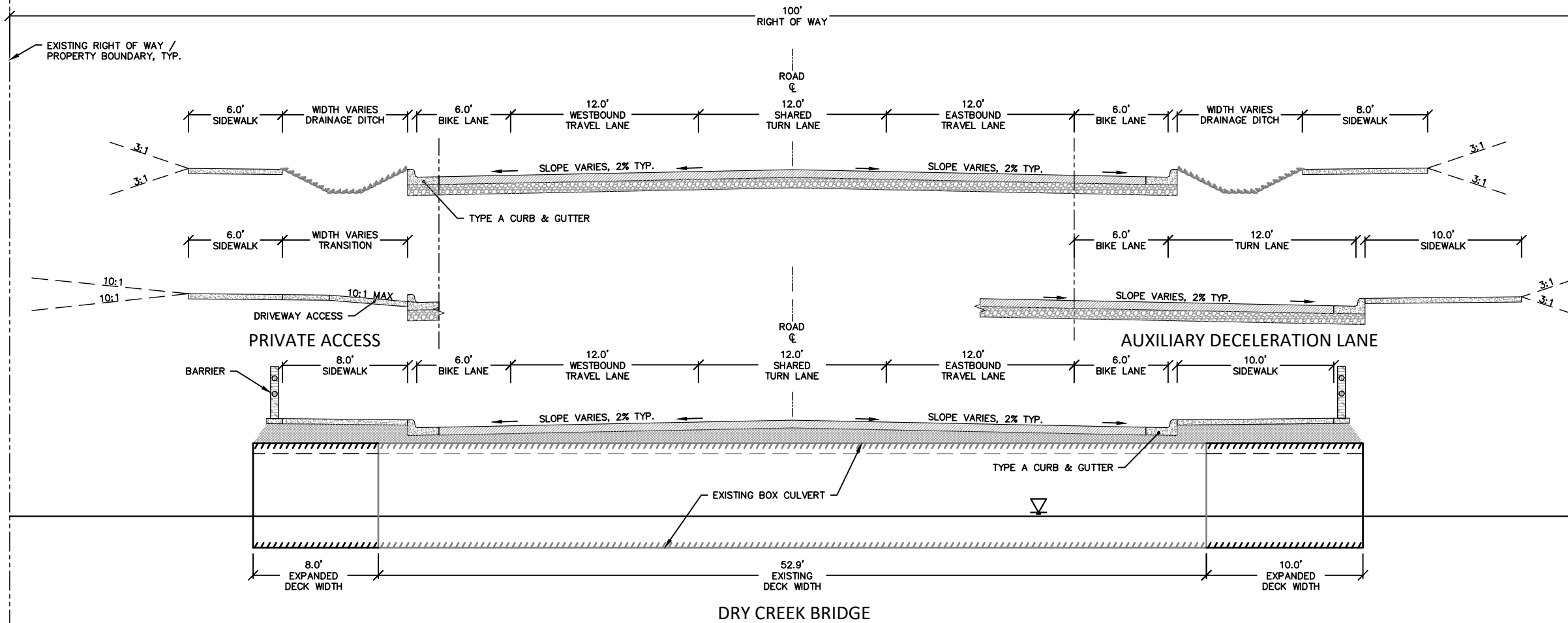
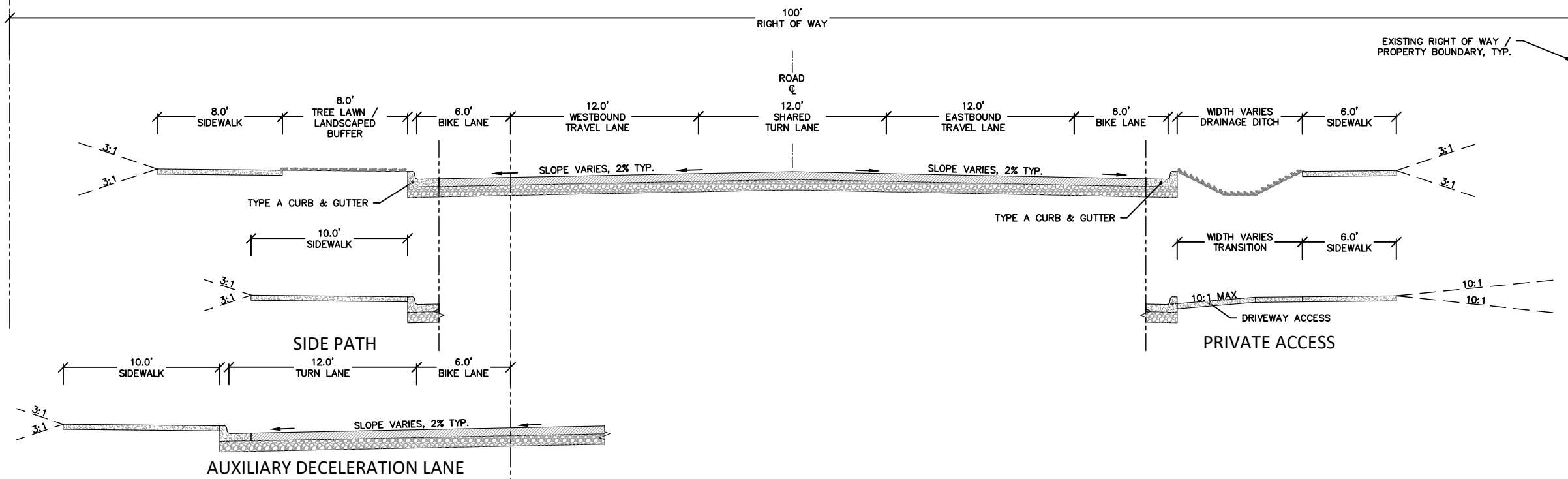


**A: 35% DESIGN SHEETS**

EAST PERSHING BOULEVARD  
US 30 TO WHITNEY



EAST PERSHING BOULEVARD  
WHITNEY TO CHRISTENSEN



DRAWING SET TITLE  
35% DRAFT  
DATE  
7/15/2022  
DRAWN BY: SAH  
CHECKED BY: SAH  
JOB #: 21072

**Y2 CONSULTANTS**  
ENGINEERING, SURVEYING & PLANNING  
LANDSCAPE ARCHITECTURE, GIS  
NATURAL RESOURCE SERVICES  
y2consultants.com  
307.733.2559

**DRAFT**  
NOT FOR  
CONSTRUCTION

E PERSHING BOULEVARD - 35%  
CHEYENNE MPO  
E PERSHING BOULEVARD  
CHEYENNE, WY

TYPICAL SECTION

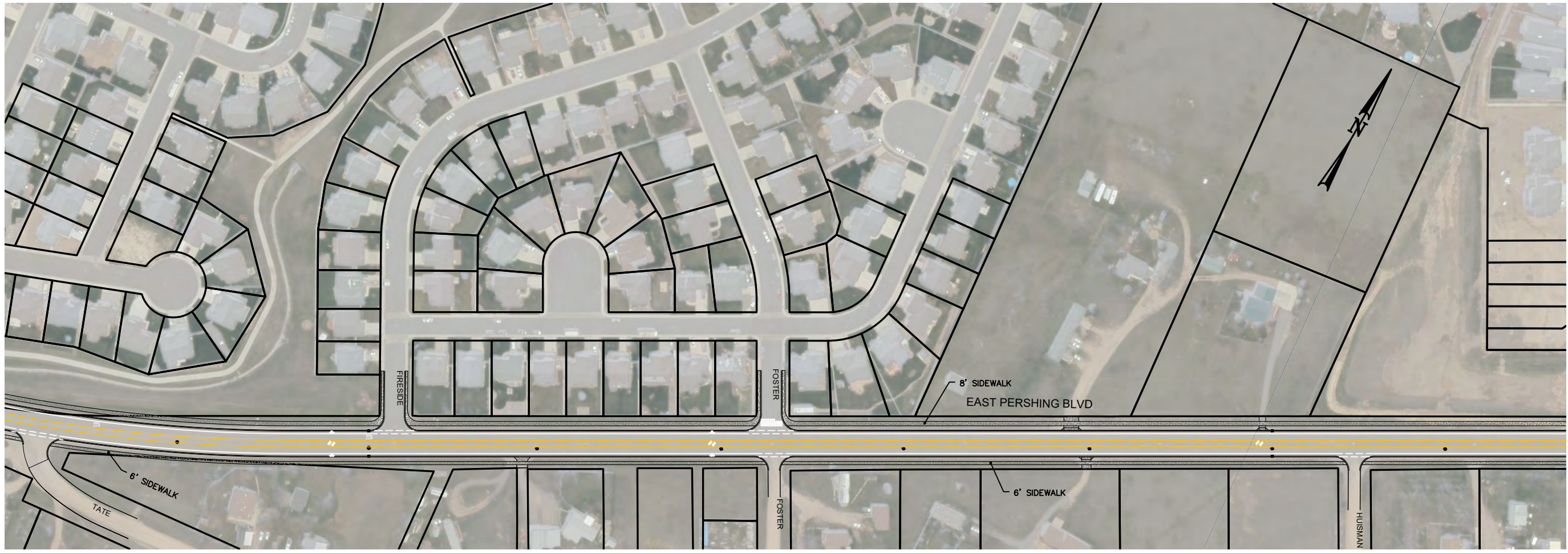
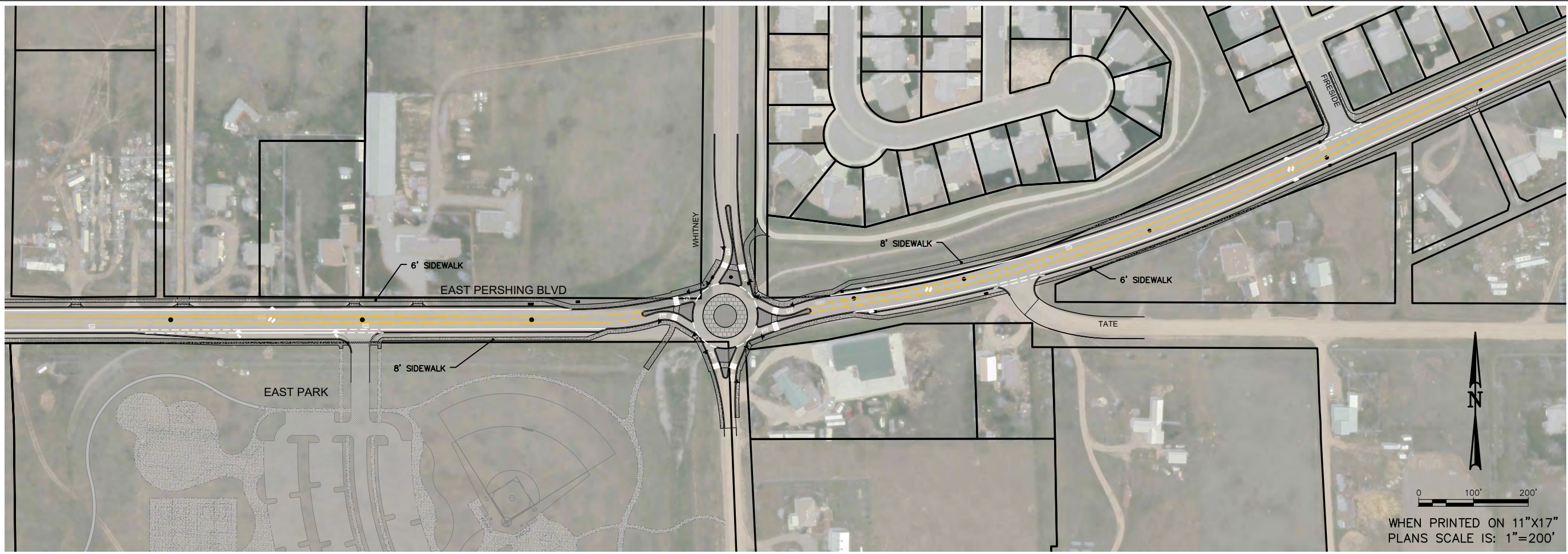
C1.1

LAST SAVED: 7/11/2022 3:52 PM BY: SKYLER HELFRICH  
C:\Users\SkylH\OneDrive - Y2 Consultants, LLC\Projects\21072-East Pershing Boulevard\Ch1\ACAD\21072\_TYPICAL.P.dwg

LAST SAVED: 7/15/2022 12:18 PM BY: SKYLER HELFRICH  
C:\Users\SkylerH\OneDrive - Y2 Consultants, LLC\Projects\21072-East Pershing Boulevard\Ch\ACAD\21072\_Overview.dwg



DRAWING SET TITLE 35% DRAFT	
DATE 7/15/2022	DRAWN BY: SAH CHECKED BY: SAH JOB #: 21072
<b>Y2 CONSULTANTS</b> ENGINEERING, SURVEYING & PLANNING LANDSCAPE ARCHITECTURE, GIS NATURAL RESOURCE SERVICES y2consultants.com 307.733.2559	
<b>DRAFT</b> NOT FOR CONSTRUCTION	
E PERSHING BOULEVARD - 35%	
CHEYENNE MPO	
E PERSHING BOULEVARD CHEYENNE, WY	
FINISHED CONDITIONS	
C2.1	



LAST SAVED: 7/15/2022 12:18 PM BY: SKYLAR HELFRICH  
 C:\Users\SkylarH\OneDrive - Y2 Consultants, LLC\Projects\21072-East Pershing Boulevard\Civil\ACAD\21072\_Overview.dwg

DATE	7/15/2022
DRAWING SET TITLE	35% DRAFT
DRAWN BY:	SAH
CHECKED BY:	SAH
JOB #:	21072

**Y2 CONSULTANTS**  
 ENGINEERING, SURVEYING & PLANNING  
 LANDSCAPE ARCHITECTURE, GIS  
 NATURAL RESOURCE SERVICES  
 y2consultants.com  
 307.733.2555

**DRAFT**  
 NOT FOR  
 CONSTRUCTION

E PERSHING BOULEVARD - 35%  
 CHEYENNE MPO  
 E PERSHING BOULEVARD  
 CHEYENNE, WY

FINISHED  
 CONDITIONS  
**C2.2**



DATE	7/15/2022
DRAWING SET TITLE	35% DRAFT
DRAWN BY:	SAH
CHECKED BY:	SAH
JOB #:	21072

**Y2 CONSULTANTS**  
ENGINEERING, SURVEYING & PLANNING  
LANDSCAPE ARCHITECTURE, GIS  
NATURAL RESOURCE SERVICES

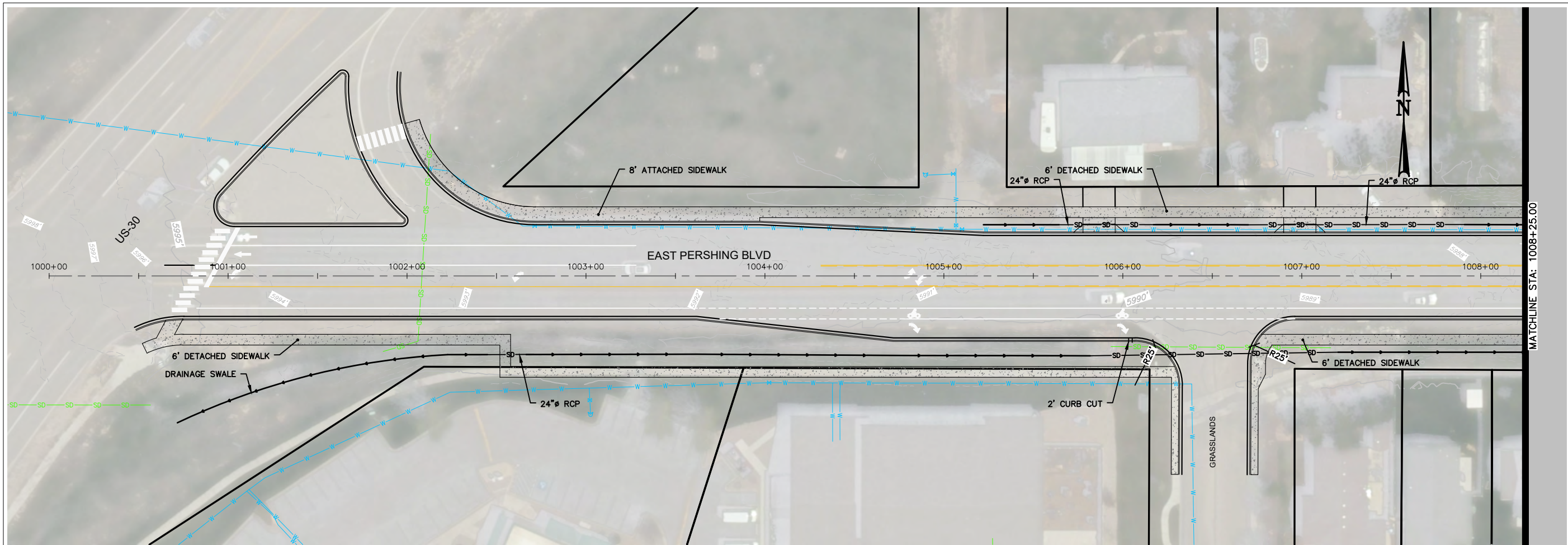
y2consultants.com  
307.733.2559

**DRAFT**  
NOT FOR  
CONSTRUCTION

E PERSHING BOULEVARD - 35%  
CHEYENNE MPO  
E PERSHING BOULEVARD  
CHEYENNE, WY

FINISHED  
CONDITIONS

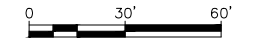
C2.3



DATE: 7/15/2022  
 DRAWING SET TITLE: 35% DRAFT  
 DRAWN BY: SAH  
 CHECKED BY: SAH JOB #: 21072

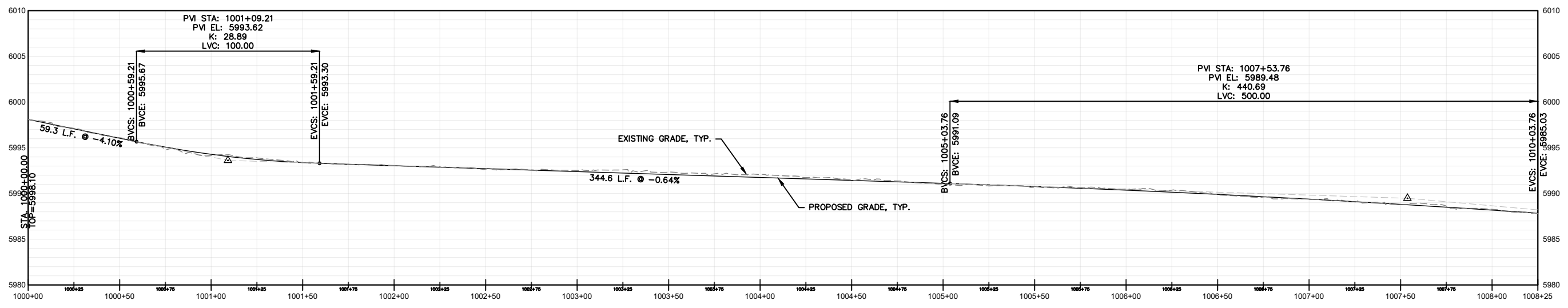
**Y2 CONSULTANTS**  
 ENGINEERING, SURVEYING & PLANNING  
 LANDSCAPE ARCHITECTURE, GIS  
 NATURAL RESOURCE SERVICES  
 y2consultants.com  
 307.733.2559

**DRAFT**  
 NOT FOR  
 CONSTRUCTION



WHEN PRINTED ON 11"X17"  
 PLANS SCALE IS: 1"=60'

**P-EAST PERSHING BOULEVARD PROFILE**  
 24x36 SHEET SCALE: HORIZ. 1" = 30' VERT. 1" = 6'  
 START STA: 1000+00.00, END STA: 1008+25.00

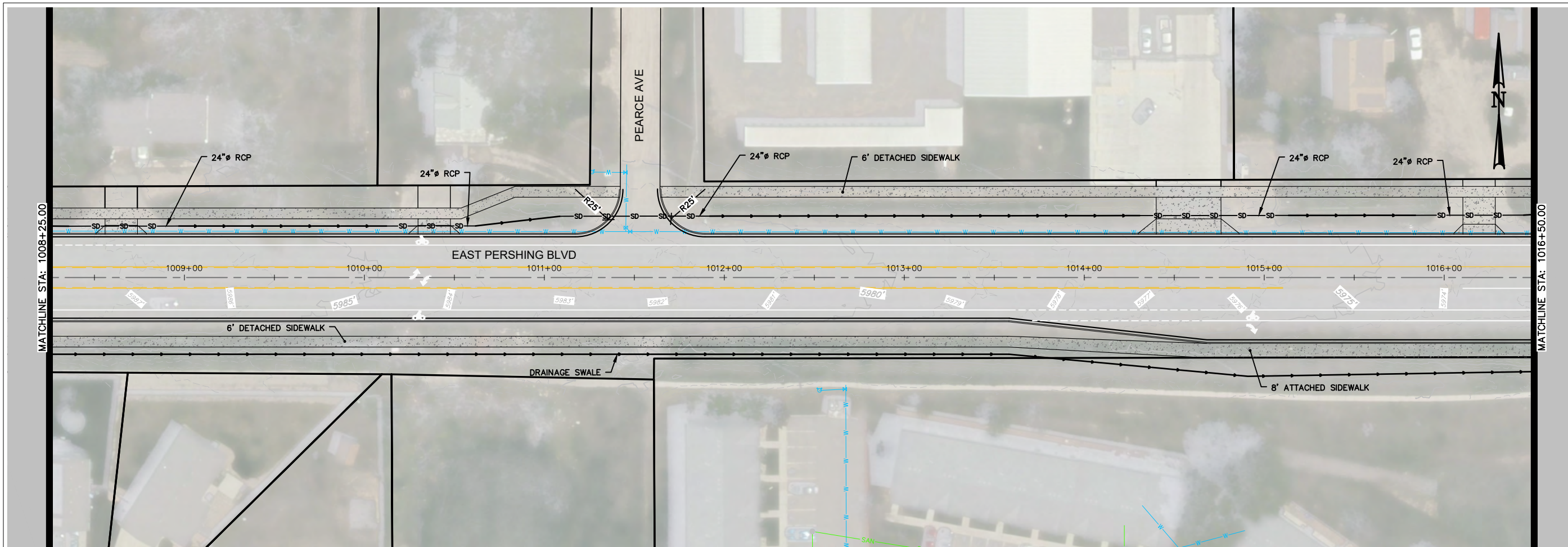


LAST SAVED: 7/15/2022 12:04 PM BY: SKYLAR HELFRICH  
 C:\Users\SkylarH\OneDrive - Y2 Consultants, LLC\Projects\21072-East Pershing Boulevard\Civil\ACAD\21072\_DESIGN\PLAN.dwg

**E PERSHING BOULEVARD - 35%**  
**CHEYENNE MPO**  
 E PERSHING BOULEVARD  
 CHEYENNE, WY

E PERSHING BLVD -  
 STA 1000+00 TO  
 1008+25

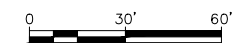
**C3.1**



DATE: 7/15/2022  
 DRAWING SET TITLE: 35% DRAFT  
 DRAWN BY: SAH  
 CHECKED BY: SAH JOB #: 21072

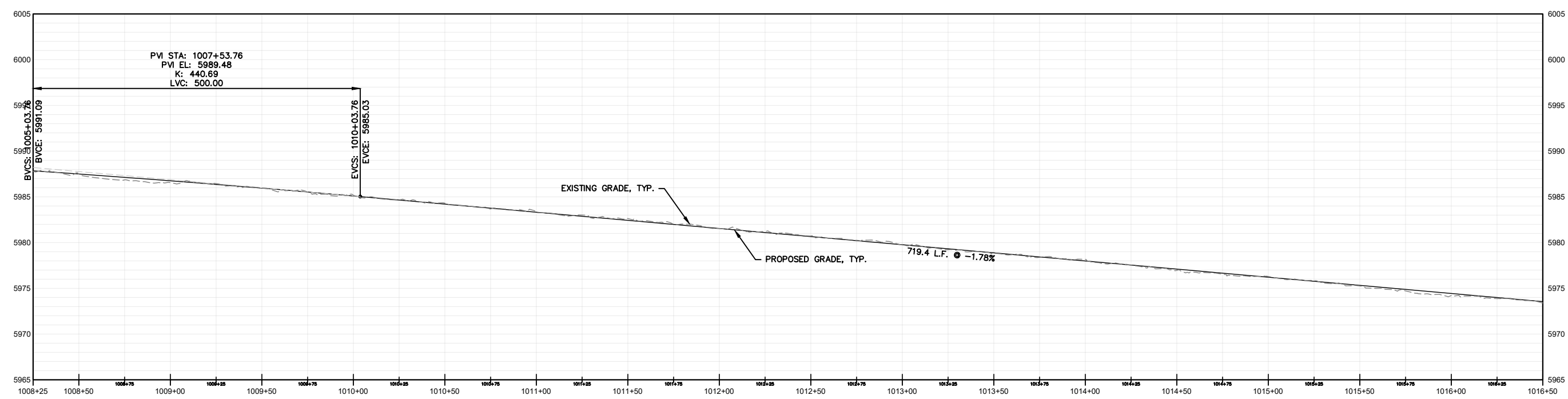
**Y2 CONSULTANTS**  
 ENGINEERING, SURVEYING & PLANNING  
 LANDSCAPE ARCHITECTURE, GIS  
 NATURAL RESOURCE SERVICES  
 y2consultants.com  
 307.733.2559

**DRAFT**  
 NOT FOR CONSTRUCTION



P-EAST PERSHING BOULEVARD PROFILE  
 24x36 SHEET SCALE: HORIZ. 1" = 30' VERT. 1" = 6'  
 START STA: 1008+25.00, END STA: 1016+50.00

WHEN PRINTED ON 11"X17"  
 PLANS SCALE IS: 1"=60'

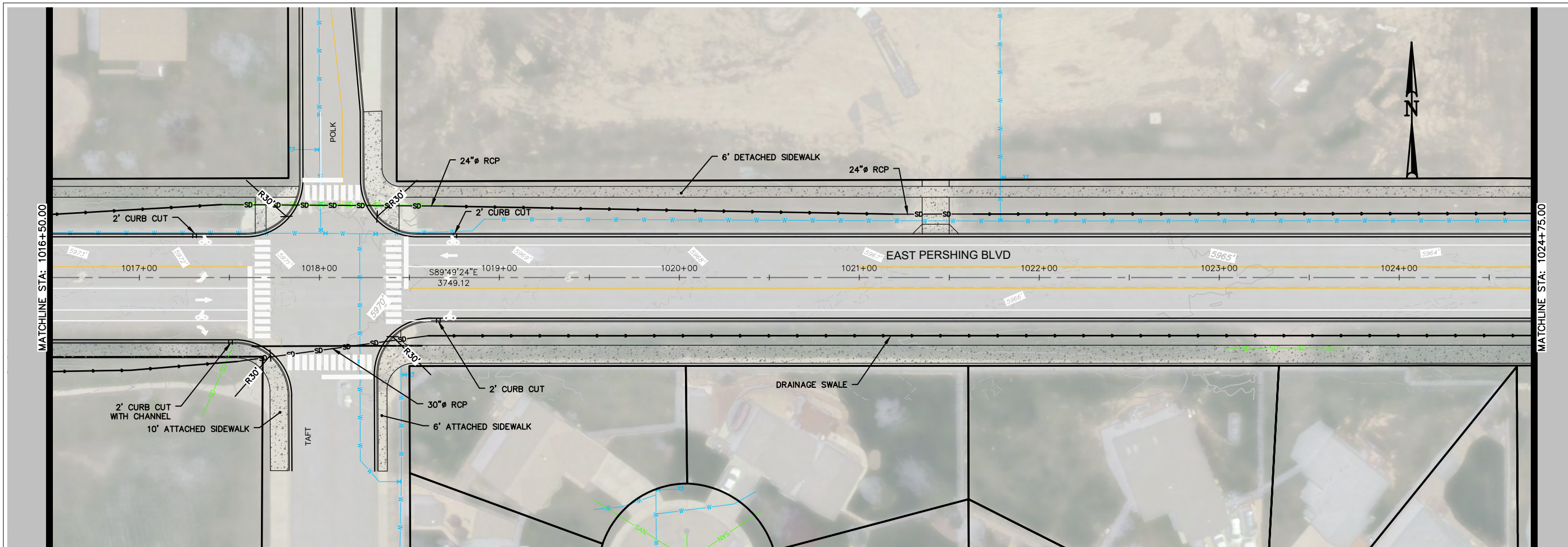


LAST SAVED: 7/15/2022 12:04 PM BY: SKYLAR HELFRICH  
 C:\Users\SkylarH\OneDrive - Y2 Consultants, LLC\Projects\21072-East Pershing Boulevard\Civil\ACAD\21072\_DESIGN\PLP.dwg

E PERSHING BOULEVARD - 35%  
 CHEYENNE MPO  
 E PERSHING BOULEVARD  
 CHEYENNE, WY

E PERSHING BLVD -  
 STA 1008+25 TO  
 1016+50

C3.2



DRAWING SET TITLE  
35% DRAFT

DATE  
7/15/2022

DRAWN BY: SAH  
CHECKED BY: SAH JOB #: 21072

**Y2 CONSULTANTS**  
ENGINEERING, SURVEYING & PLANNING  
LANDSCAPE ARCHITECTURE, GIS  
NATURAL RESOURCE SERVICES

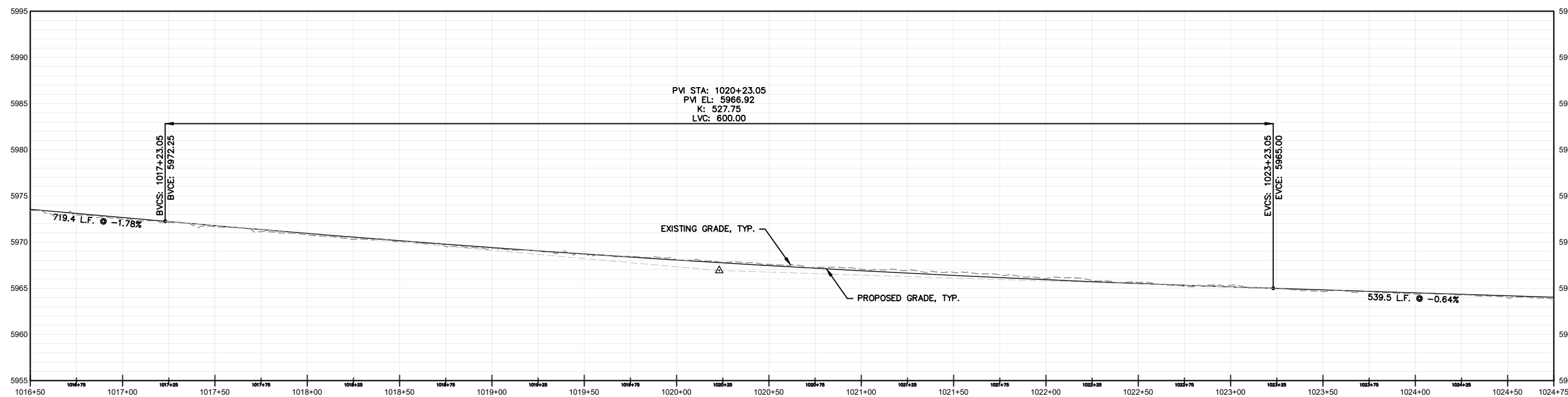
y2consultants.com  
307.733.2559

**DRAFT**  
NOT FOR  
CONSTRUCTION

0 30' 60'

WHEN PRINTED ON 11"X17"  
PLANS SCALE IS: 1"=60'

P-EAST PERSHING BOULEVARD PROFILE  
24x36 SHEET SCALE: HORIZ. 1" = 30' VERT. 1" = 6'  
START STA: 1016+50.00, END STA: 1024+75.00



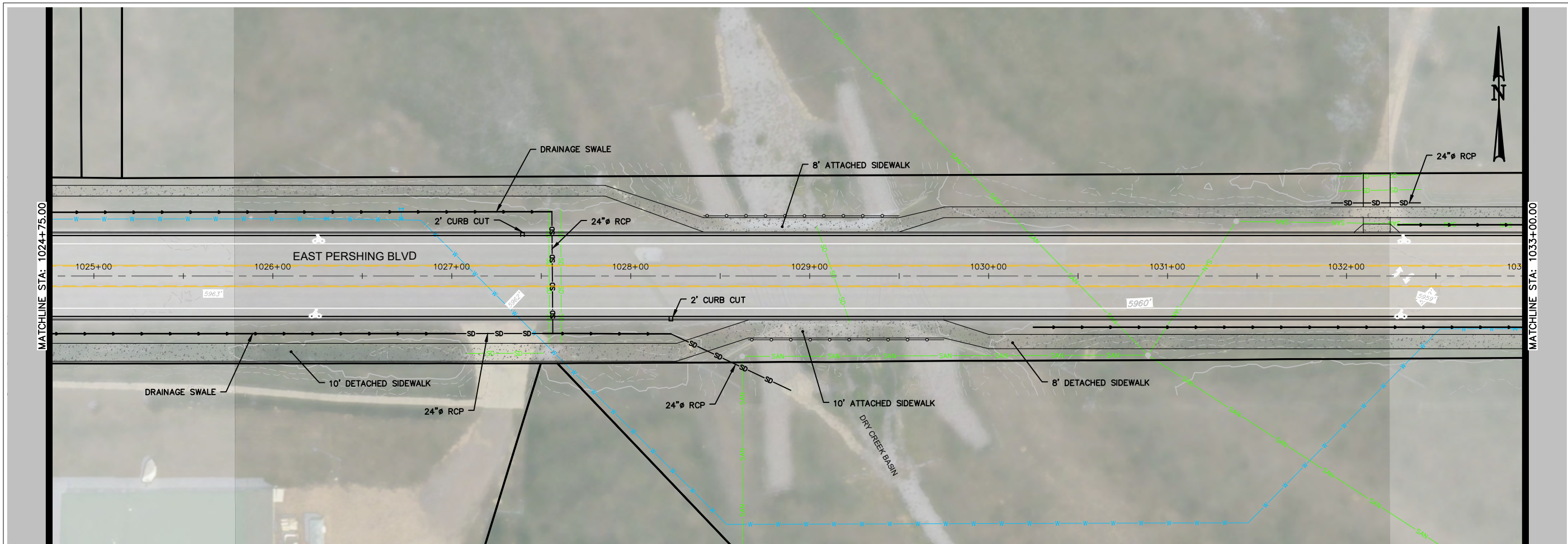
LAST SAVED: 7/15/2022 12:04 PM BY: SKYLER HELFRICH  
C:\Users\SkylrH\OneDrive - Y2 Consultants, LLC\Projects\21072-East Pershing Boulevard\Civil\ACAD\21072\_DESIGN\21072\_PAP.dwg

E PERSHING BOULEVARD - 35%  
CHEYENNE MPO  
E PERSHING BOULEVARD  
CHEYENNE, WY

E PERSHING BLVD -  
STA 1016+50 TO  
1024+75

C3.3





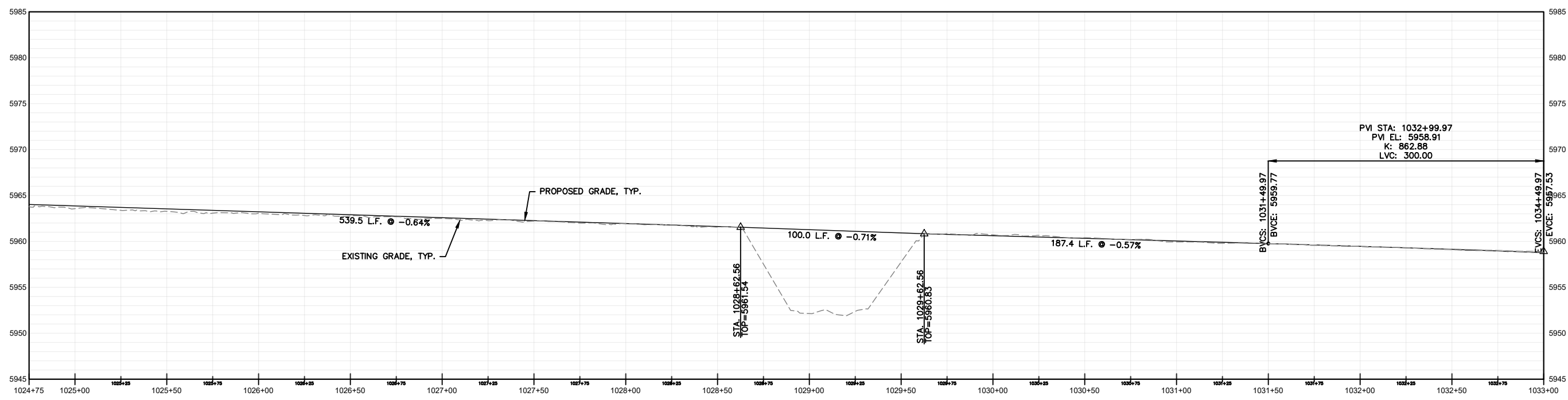
DATE: 7/15/2022  
 DRAWING SET TITLE: 35% DRAFT  
 DRAWN BY: SAH  
 CHECKED BY: SAH JOB #: 21072

**Y2 CONSULTANTS**  
 ENGINEERING, SURVEYING & PLANNING  
 LANDSCAPE ARCHITECTURE, GIS  
 NATURAL RESOURCE SERVICES  
 y2consultants.com  
 307.733.2559

**DRAFT**  
 NOT FOR  
 CONSTRUCTION

P-EAST PERSHING BOULEVARD PROFILE  
 24x36 SHEET SCALE: HORIZ. 1" = 30' VERT. 1" = 6'  
 START STA: 1024+75.00, END STA: 1033+00.00

0 30' 60'  
 WHEN PRINTED ON 11"X17"  
 PLANS SCALE IS: 1"=60'

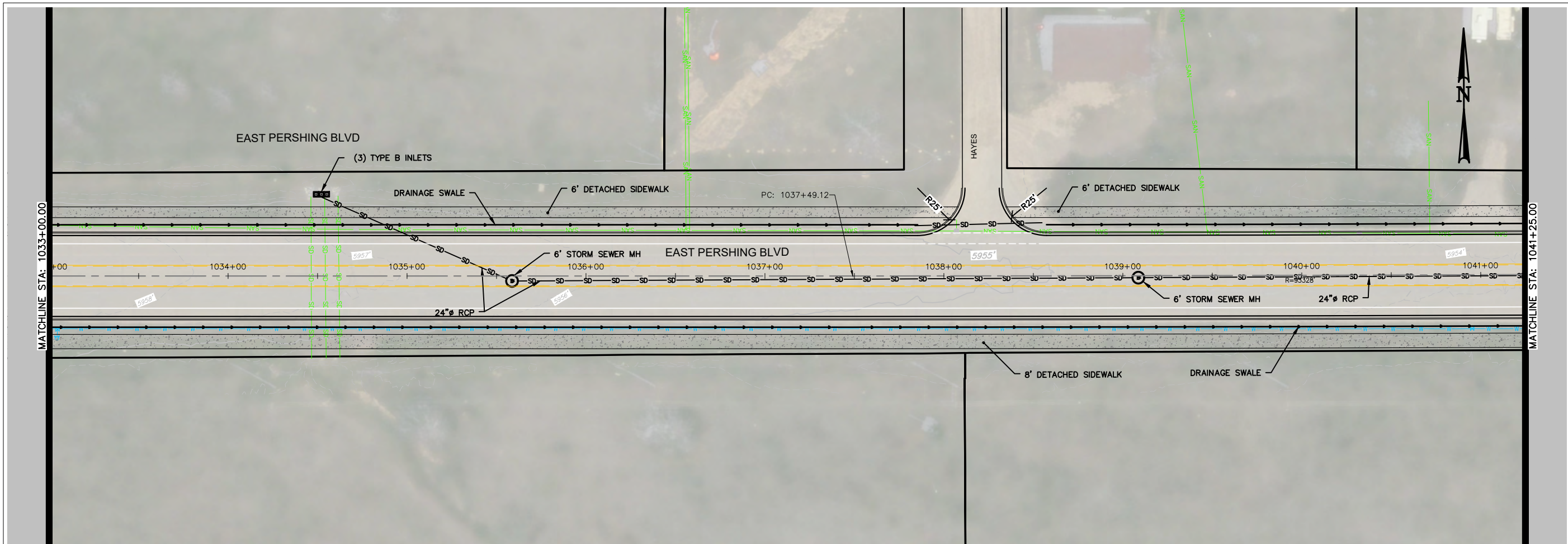


E PERSHING BOULEVARD - 35%  
 CHEYENNE MPO  
 E PERSHING BOULEVARD  
 CHEYENNE, WY

E PERSHING BLVD -  
 STA 1024+75 TO  
 1033+00

C3.4

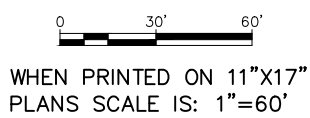
LAST SAVED: 7/15/2022 12:04 PM BY: SKYLER HILFRICH  
 C:\Users\SkylerHilfrich\OneDrive - Y2 Consultants, LLC\Projects\21072-East Pershing Boulevard\Civil\ACAD\21072\_DESIGN\24x36.dwg



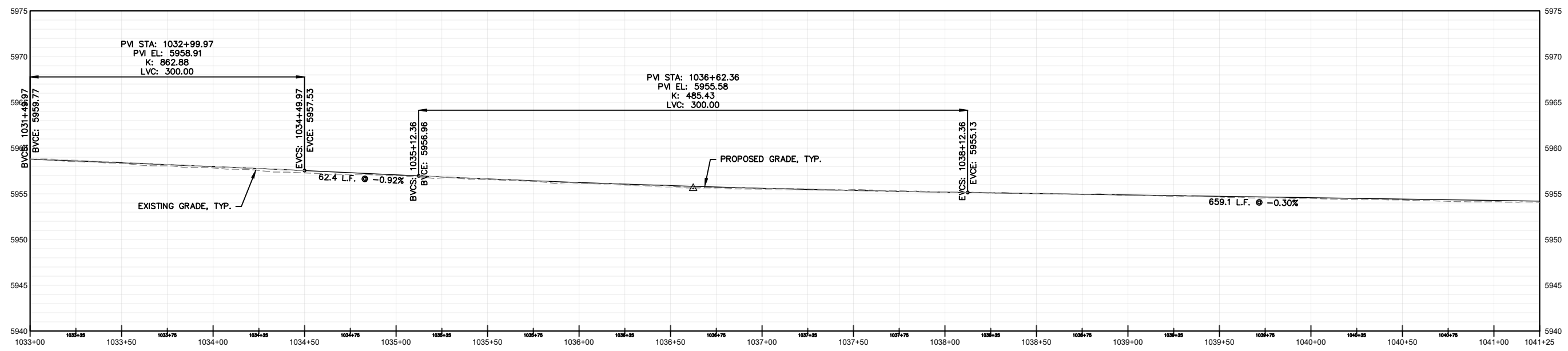
DATE: 7/15/2022  
 DRAWING SET TITLE: 35% DRAFT  
 DRAWN BY: SAH  
 CHECKED BY: SAH JOB #: 21072

**Y2 CONSULTANTS**  
 ENGINEERING, SURVEYING & PLANNING  
 LANDSCAPE ARCHITECTURE, GIS  
 NATURAL RESOURCE SERVICES  
 y2consultants.com  
 307.733.2559

**DRAFT**  
 NOT FOR CONSTRUCTION



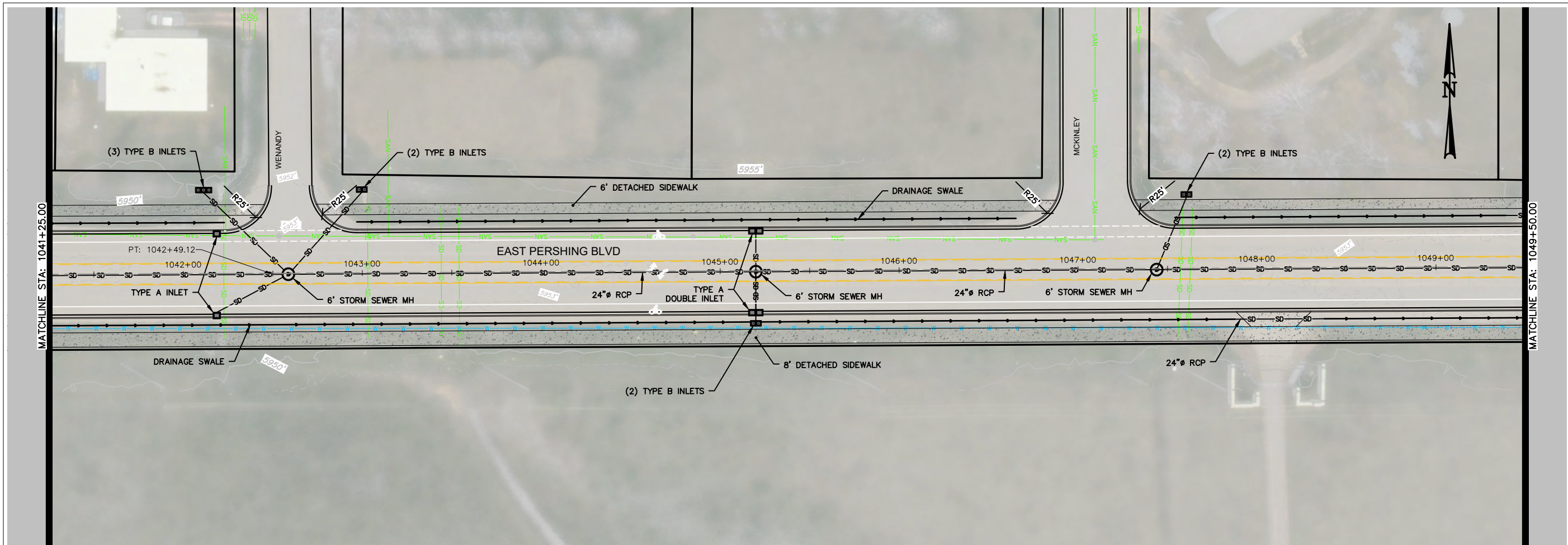
P-EAST PERSHING BOULEVARD PROFILE  
 24x36 SHEET SCALE: HORIZ. 1" = 30' VERT. 1" = 6'  
 START STA: 1033+00.00, END STA: 1041+25.00



E PERSHING BOULEVARD - 35%  
 CHEYENNE MPO  
 E PERSHING BOULEVARD  
 CHEYENNE, WY

E PERSHING BLVD -  
 STA 1033+00 TO  
 1041+25  
**C3.5**

LAST SAVED: 7/15/2022 12:04 PM BY: SKYLAR HELFRICH  
 C:\Users\SkylarH\OneDrive - Y2 Consultants, LLC\Projects\21072-East Pershing Boulevard\Civil\ACAD\21072\_DESIGN\PLAN.dwg



DRAWING SET TITLE  
35% DRAFT

DATE  
7/15/2022

DRAWN BY: SAH  
CHECKED BY: SAH JOB #: 21072

**Y2 CONSULTANTS**  
ENGINEERING, SURVEYING & PLANNING  
LANDSCAPE ARCHITECTURE, GIS  
NATURAL RESOURCE SERVICES

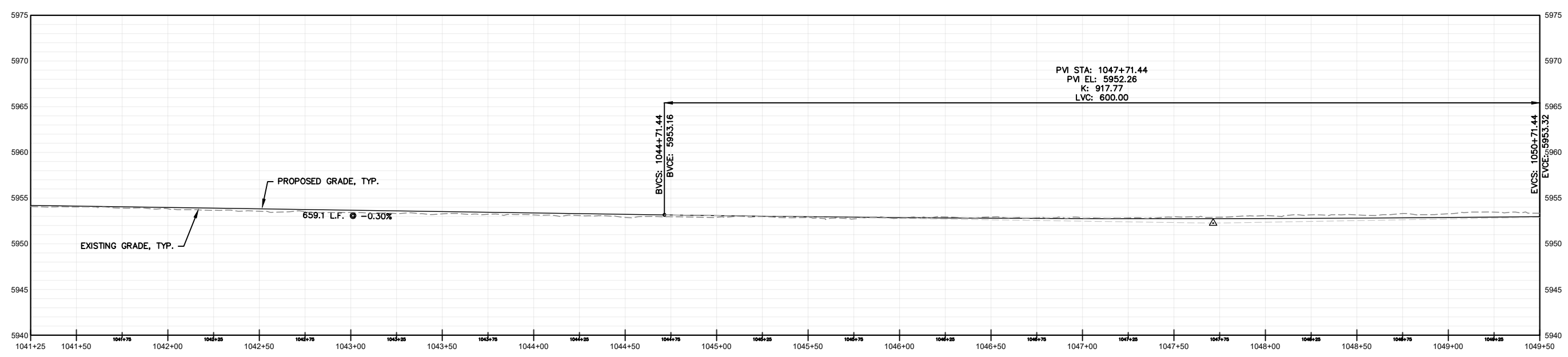
y2consultants.com  
307.733.2559

**DRAFT**  
NOT FOR  
CONSTRUCTION

0 30' 60'

WHEN PRINTED ON 11"X17"  
PLANS SCALE IS: 1"=60'

P-EAST PERSHING BOULEVARD PROFILE  
24x36 SHEET SCALE: HORIZ. 1" = 30' VERT. 1" = 6'  
START STA: 1041+25.00, END STA: 1049+50.00



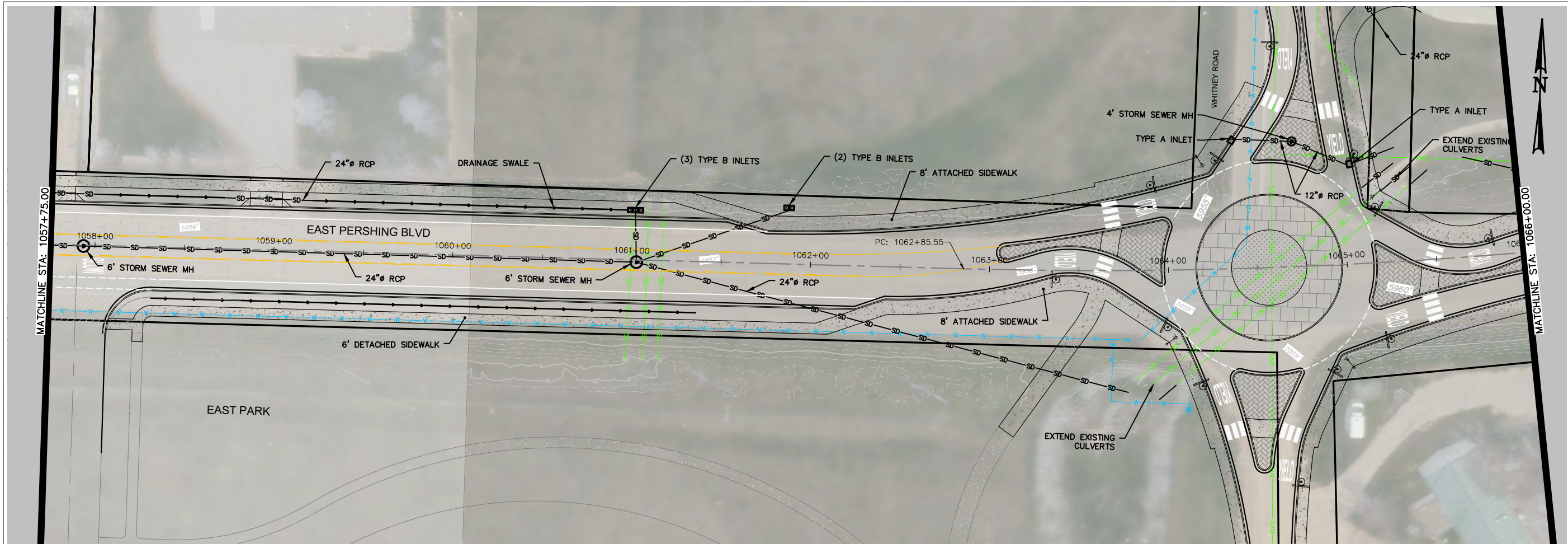
E PERSHING BOULEVARD - 35%  
CHEYENNE MPO  
E PERSHING BOULEVARD  
CHEYENNE, WY

E PERSHING BLVD -  
STA 1041+25 TO  
1049+50

**C3.6**

LAST SAVED: 7/15/2022 12:04 PM BY: SKYLAR HELFRICH  
C:\Users\SkylarH\OneDrive - Y2 Consultants, LLC\Projects\21072-East Pershing Boulevard\Ch\ACAD\21072\_DESIGN\PLP.dwg





DRAWING SET TITLE  
35% DRAFT

DATE  
7/15/2022

DRAWN BY: SAH  
CHECKED BY: SAH JOB #: 21072

**Y2 CONSULTANTS**  
ENGINEERING, SURVEYING & PLANNING  
LANDSCAPE ARCHITECTURE, GIS  
NATURAL RESOURCE SERVICES

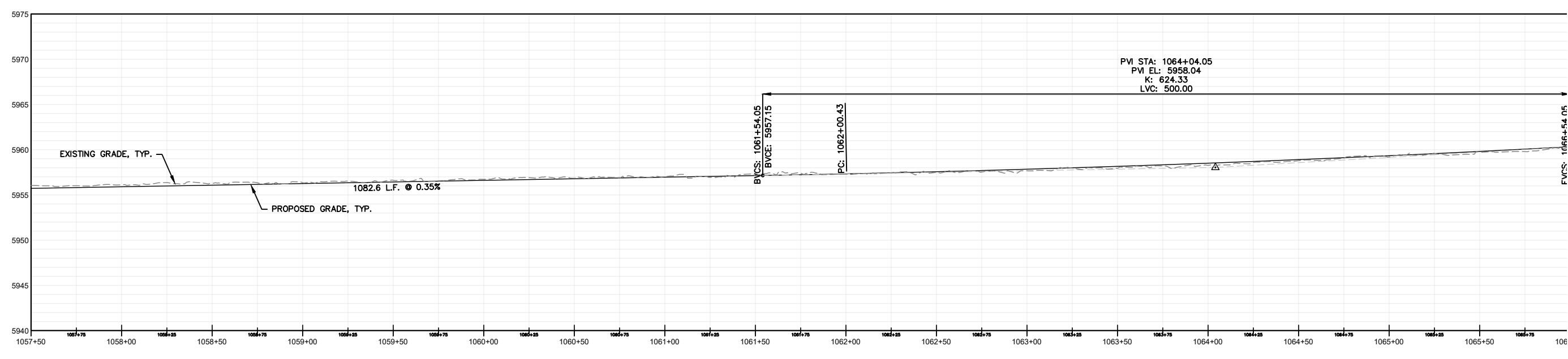
y2consultants.com  
307.733.2559

**DRAFT**  
NOT FOR  
CONSTRUCTION

0 30' 60'

WHEN PRINTED ON 11"X17"  
PLANS SCALE IS: 1"=60'

P-EAST PERSHING BOULEVARD PROFILE  
24x36 SHEET SCALE: HORIZ. 1" = 30' VERT. 1" = 6'  
START STA: 1057+50.00, END STA: 1066+00.00

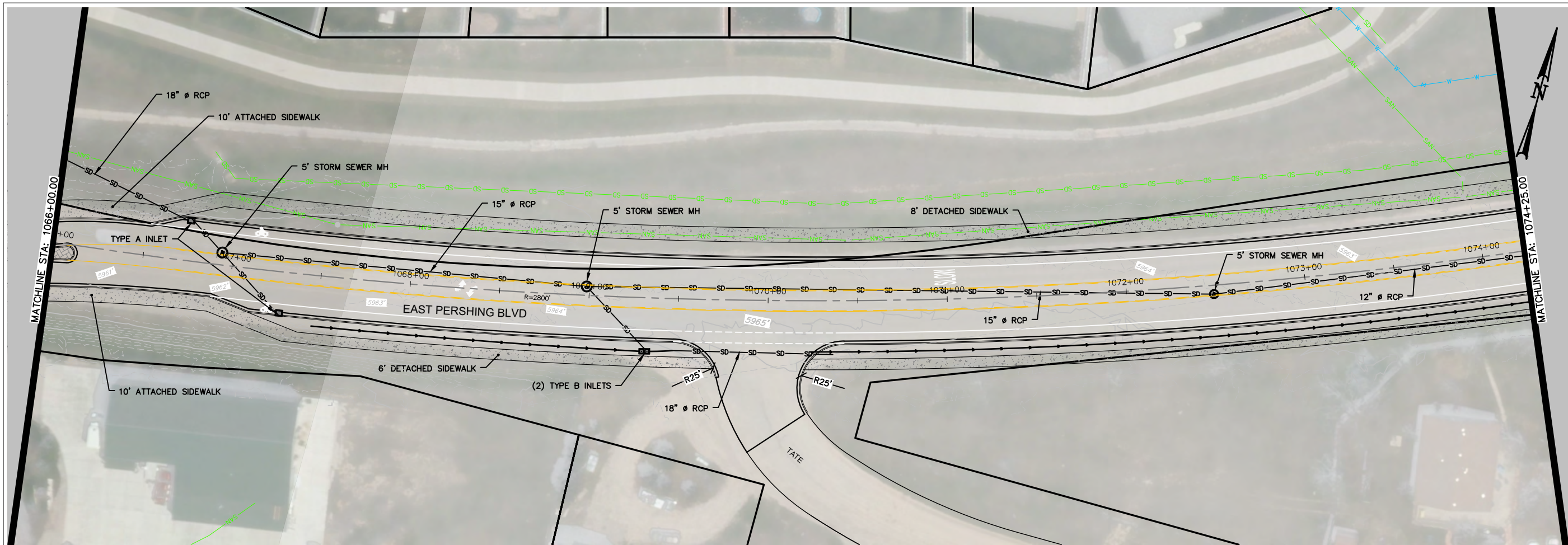


E PERSHING BOULEVARD - 35%  
CHEYENNE MPO  
E PERSHING BOULEVARD  
CHEYENNE, WY

E PERSHING BLVD -  
STA 1057+75 TO  
1066+00

**C3.8**

LAST SAVED: 7/15/2022 12:04 PM BY: SKYLAR HELFRICH  
C:\Users\SkylarH\OneDrive - Y2 Consultants, LLC\Projects\21072-East Pershing Boulevard\Chil\ACAD\21072\_DESIGN\PLP.dwg



DRAWING SET TITLE  
35% DRAFT

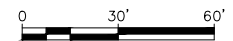
DATE  
7/15/2022

DRAWN BY: SAH  
CHECKED BY: SAH JOB #: 21072

**Y2 CONSULTANTS**  
ENGINEERING, SURVEYING & PLANNING  
LANDSCAPE ARCHITECTURE, GIS  
NATURAL RESOURCE SERVICES

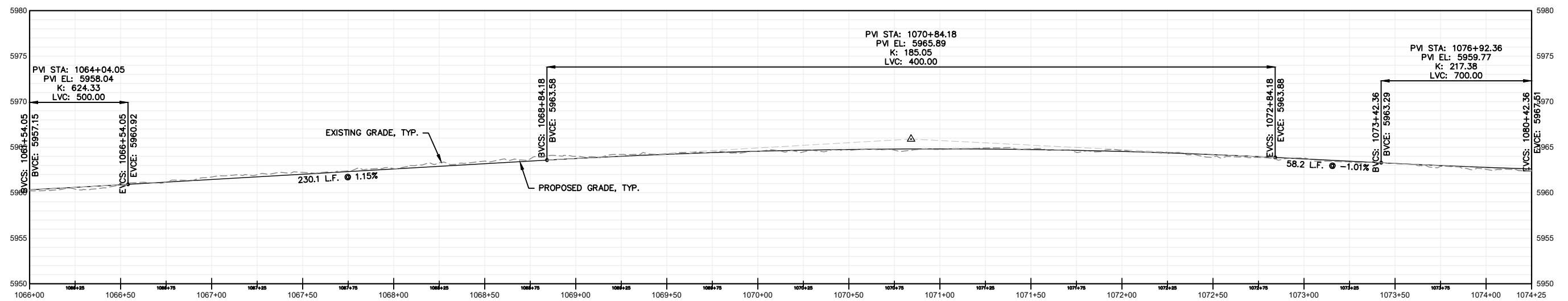
y2consultants.com  
307.733.2559

**DRAFT**  
NOT FOR  
CONSTRUCTION



WHEN PRINTED ON 11"X17"  
PLANS SCALE IS: 1"=60'

**P-EAST PERSHING BOULEVARD PROFILE**  
24x36 SHEET SCALE: HORIZ. 1" = 30' VERT. 1" = 6'  
START STA: 1066+00.00, END STA: 1074+25.00

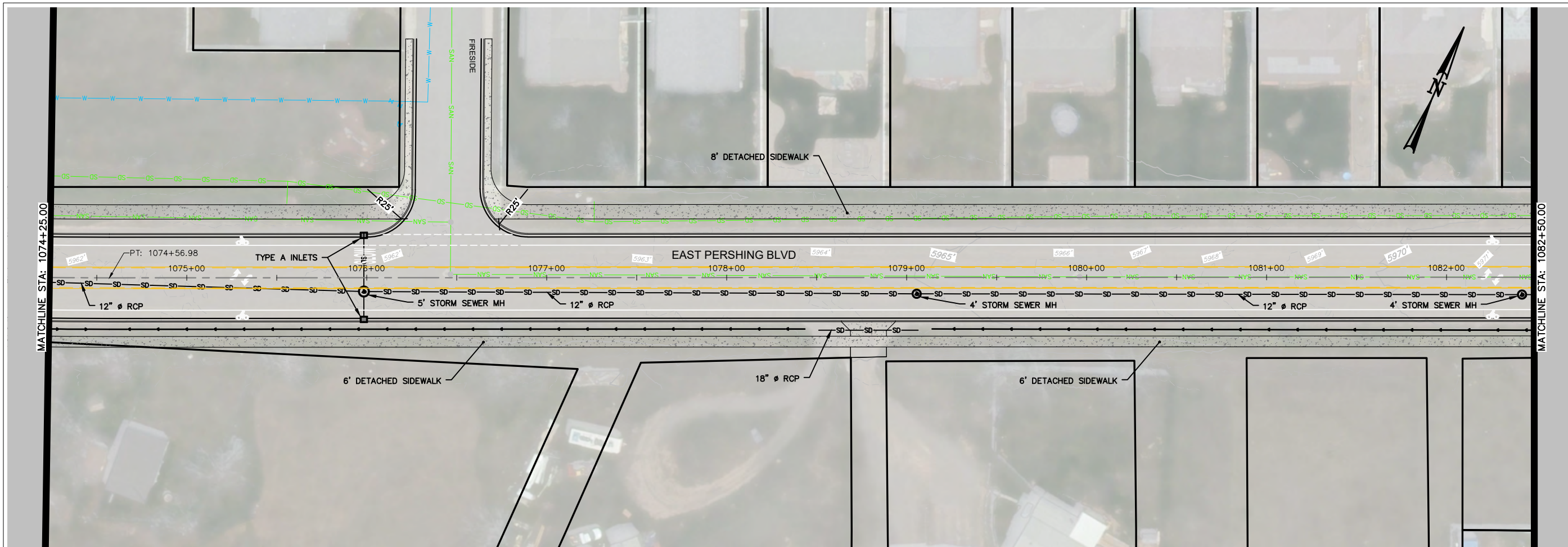


LAST SAVED: 7/15/2022 12:04 PM BY: SKYLER HILFRICH  
C:\Users\SkylH\OneDrive - Y2 Consultants, LLC\Projects\21072-East Pershing Boulevard\Civil\ACAD\21072\_DESIGN\PLP.dwg

**E PERSHING BOULEVARD - 35%**  
**CHEYENNE MPO**  
E PERSHING BOULEVARD  
CHEYENNE, WY

E PERSHING BLVD -  
STA 1066+00 TO  
1074+25

**C3.9**



DRAWING SET TITLE  
35% DRAFT

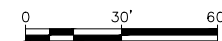
DATE  
7/15/2022

DRAWN BY: SAH  
CHECKED BY: SAH JOB #: 21072

**Y2 CONSULTANTS**  
ENGINEERING, SURVEYING & PLANNING  
LANDSCAPE ARCHITECTURE, GIS  
NATURAL RESOURCE SERVICES

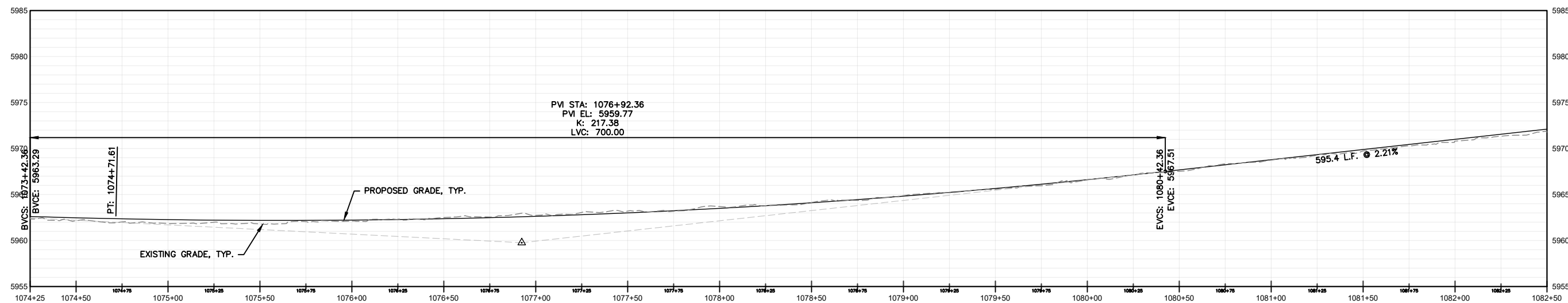
y2consultants.com  
307.733.2559

**DRAFT**  
NOT FOR  
CONSTRUCTION



WHEN PRINTED ON 11"X17"  
PLANS SCALE IS: 1"=60'

**P-EAST PERSHING BOULEVARD PROFILE**  
24x36 SHEET SCALE: HORIZ. 1" = 30' VERT. 1" = 6'  
START STA: 1074+25.00, END STA: 1082+50.00



LAST SAVED: 7/15/2022 12:04 PM BY: SKYLAR HELFRICH  
C:\Users\SkylarH\OneDrive - Y2 Consultants, LLC\Projects\21072-East Pershing Boulevard\Civil\ACAD\21072\_DESIGN\PLAN.dwg

E PERSHING BOULEVARD - 35%  
CHEYENNE MPO  
E PERSHING BOULEVARD  
CHEYENNE, WY

E PERSHING BLVD -  
STA 1074+25 TO  
1082+50

**C3.10**



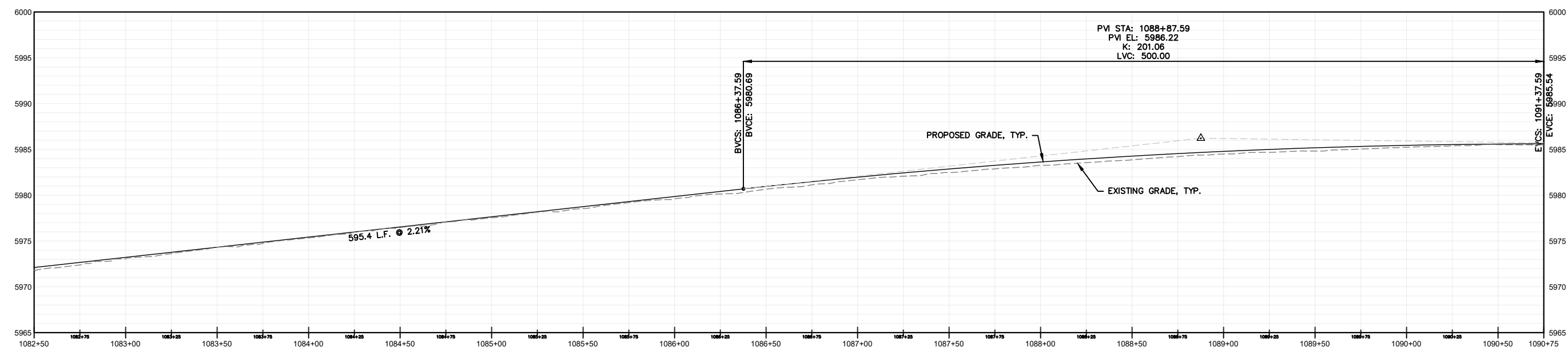
DATE: 7/15/2022  
 DRAWING SET TITLE: 35% DRAFT  
 DRAWN BY: SAH  
 CHECKED BY: SAH JOB #: 21072

**Y2 CONSULTANTS**  
 ENGINEERING, SURVEYING & PLANNING  
 LANDSCAPE ARCHITECTURE, GIS  
 NATURAL RESOURCE SERVICES  
 y2consultants.com  
 307.733.2559

**DRAFT**  
 NOT FOR CONSTRUCTION

0 30' 60'  
 WHEN PRINTED ON 11"X17"  
 PLANS SCALE IS: 1"=60'

P-EAST PERSHING BOULEVARD PROFILE  
 24x36 SHEET SCALE: HORIZ. 1" = 30' VERT. 1" = 6'  
 START STA: 1082+50.00, END STA: 1090+75.00



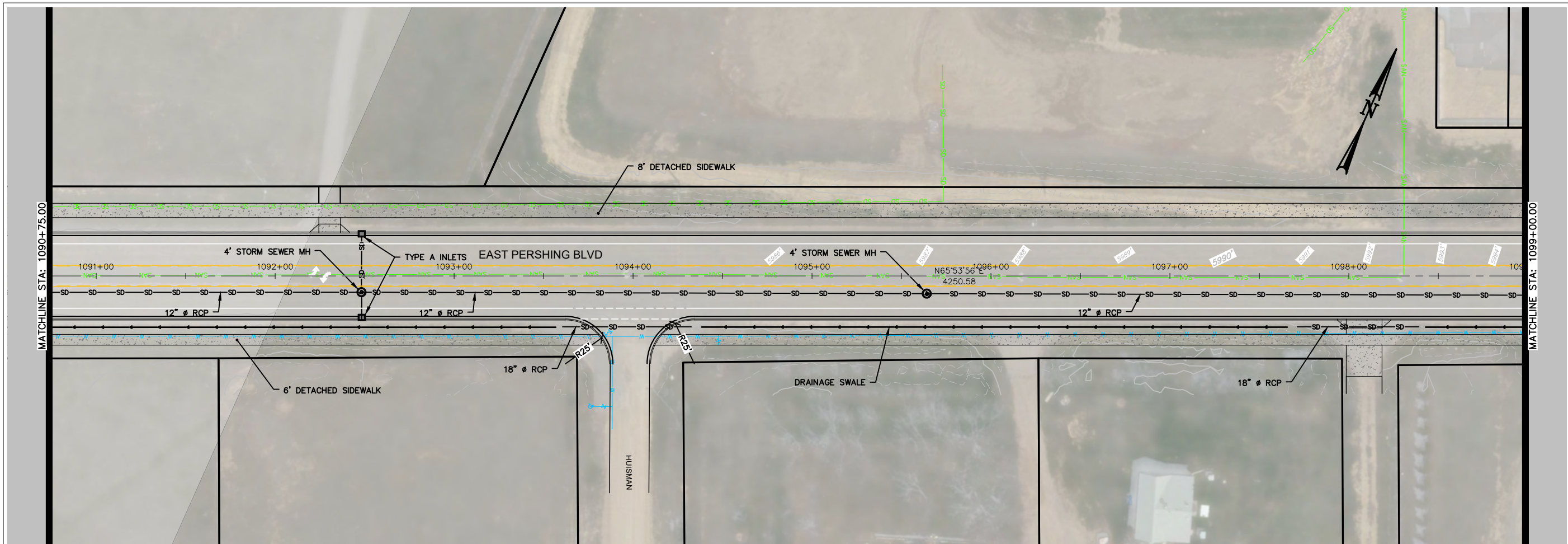
LAST SAVED: 7/15/2022 12:04 PM BY: SKYLER HELFRICH  
 C:\Users\SkylH\OneDrive - Y2 Consultants, LLC\Projects\21072-East Pershing Boulevard\Civil\ACAD\21072\_DESIGN\PLAN.dwg

E PERSHING BOULEVARD - 35%  
 CHEYENNE MPO  
 E PERSHING BOULEVARD  
 CHEYENNE, WY

E PERSHING BLVD -  
 STA 1082+50 TO  
 1090+75

**C3.11**





DATE	7/15/2022
DRAWING SET TITLE	35% DRAFT
DRAWN BY:	SAH
CHECKED BY:	SAH
JOB #:	21072

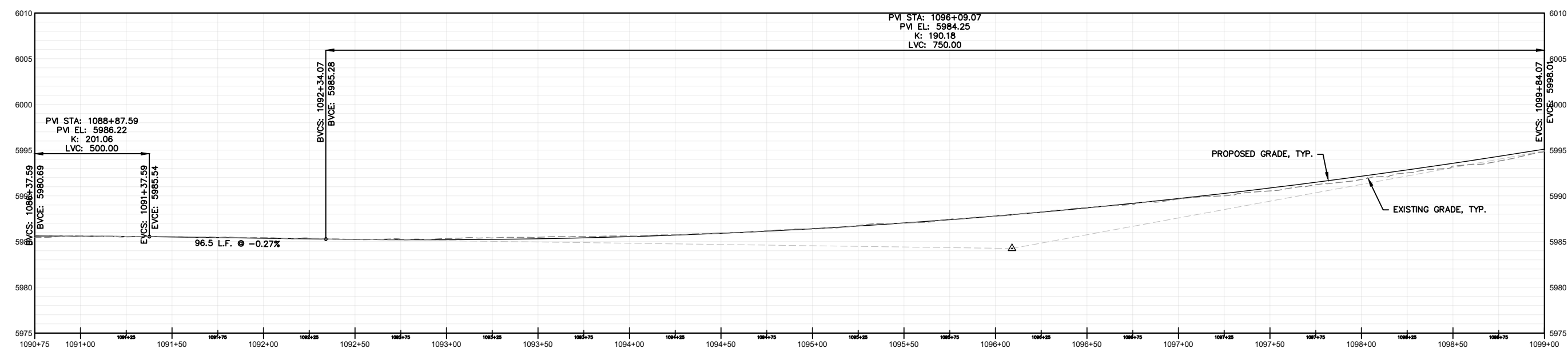
**Y2 CONSULTANTS**  
 ENGINEERING, SURVEYING & PLANNING  
 LANDSCAPE ARCHITECTURE, GIS  
 NATURAL RESOURCE SERVICES

Y2consultants.com  
 307.733.2559

**DRAFT**  
 NOT FOR  
 CONSTRUCTION

0 30' 60'  
 WHEN PRINTED ON 11"X17"  
 PLANS SCALE IS: 1"=60'

P-EAST PERSHING BOULEVARD PROFILE  
 24x36 SHEET SCALE: HORIZ. 1" = 30' VERT. 1" = 6'  
 START STA: 1090+75.00, END STA: 1099+00.00

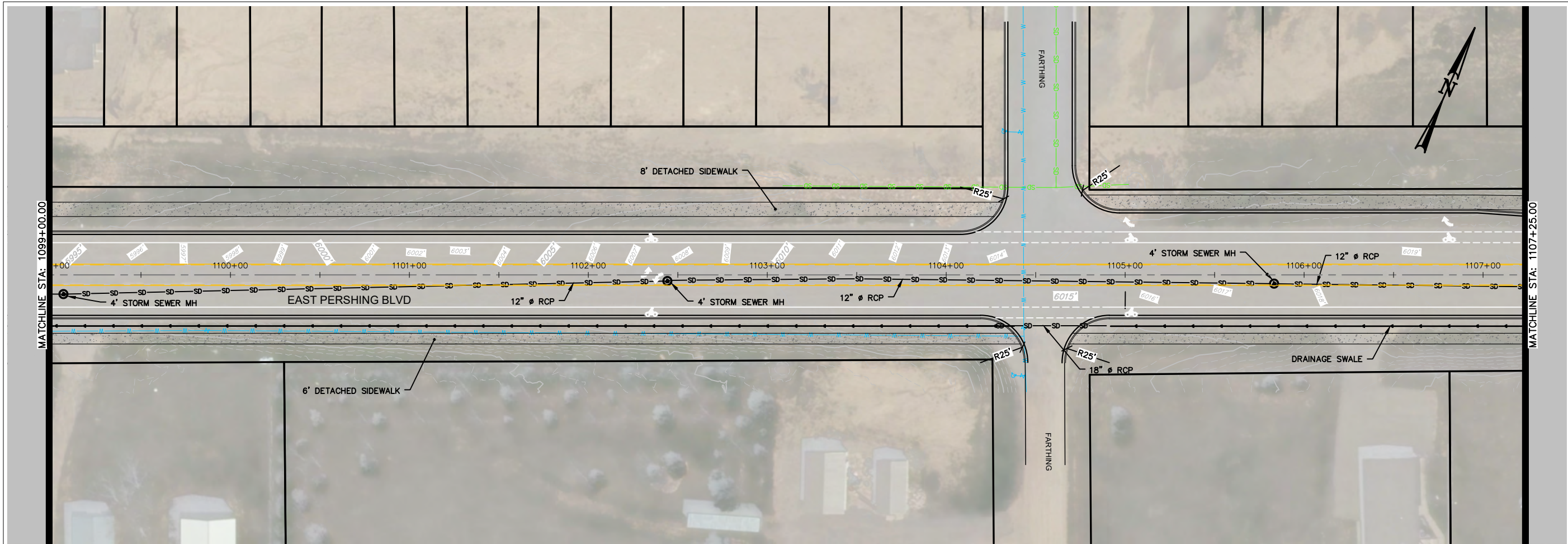


E PERSHING BOULEVARD - 35%  
 CHEYENNE MPO  
 E PERSHING BOULEVARD  
 CHEYENNE, WY

E PERSHING BLVD -  
 STA 1090+75 TO  
 1099+00

**C3.12**

LAST SAVED: 7/15/2022 12:04 PM BY: SKYLAR HELFRICH  
 C:\Users\SkylarH\OneDrive - Y2 Consultants, LLC\Projects\21072-East Pershing Boulevard\Civil\ACAD\21072\_DESIGN\PLAN.dwg



DRAWING SET TITLE  
35% DRAFT

DATE  
7/15/2022

DRAWN BY: SAH  
CHECKED BY: SAH JOB #: 21072

**Y2 CONSULTANTS**  
ENGINEERING, SURVEYING & PLANNING  
LANDSCAPE ARCHITECTURE, GIS  
NATURAL RESOURCE SERVICES

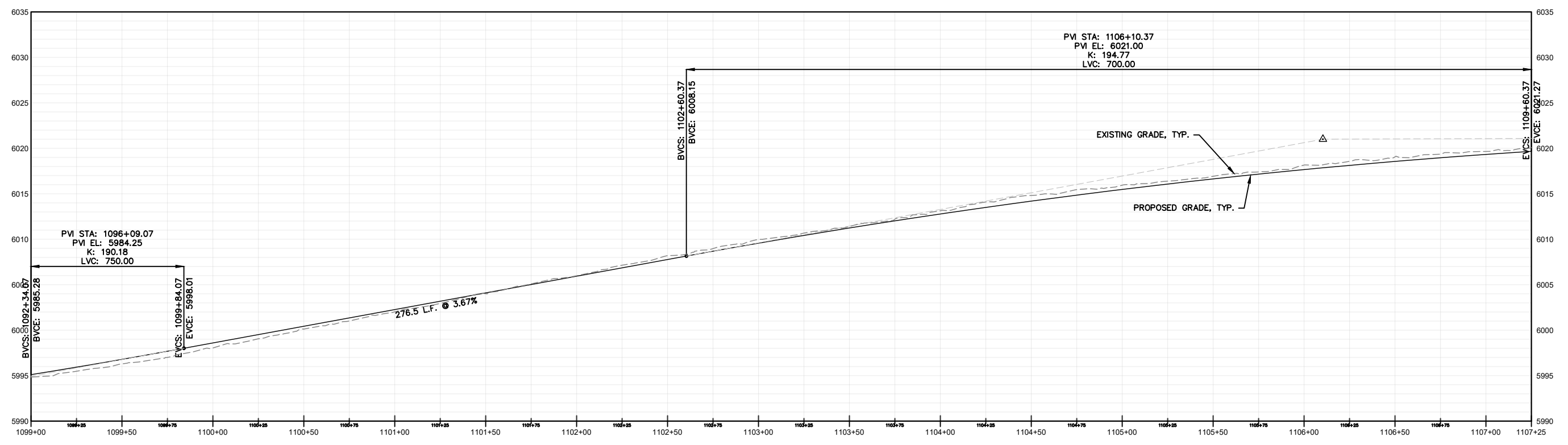
y2consultants.com  
307.735.2559

**DRAFT**  
NOT FOR  
CONSTRUCTION

P-EAST PERSHING BOULEVARD PROFILE  
24x36 SHEET SCALE: HORIZ. 1" = 30' VERT. 1" = 6'  
START STA: 1099+00.00, END STA: 1107+25.00

0 30' 60'

WHEN PRINTED ON 11"X17"  
PLANS SCALE IS: 1"=60'



E PERSHING BOULEVARD - 35%

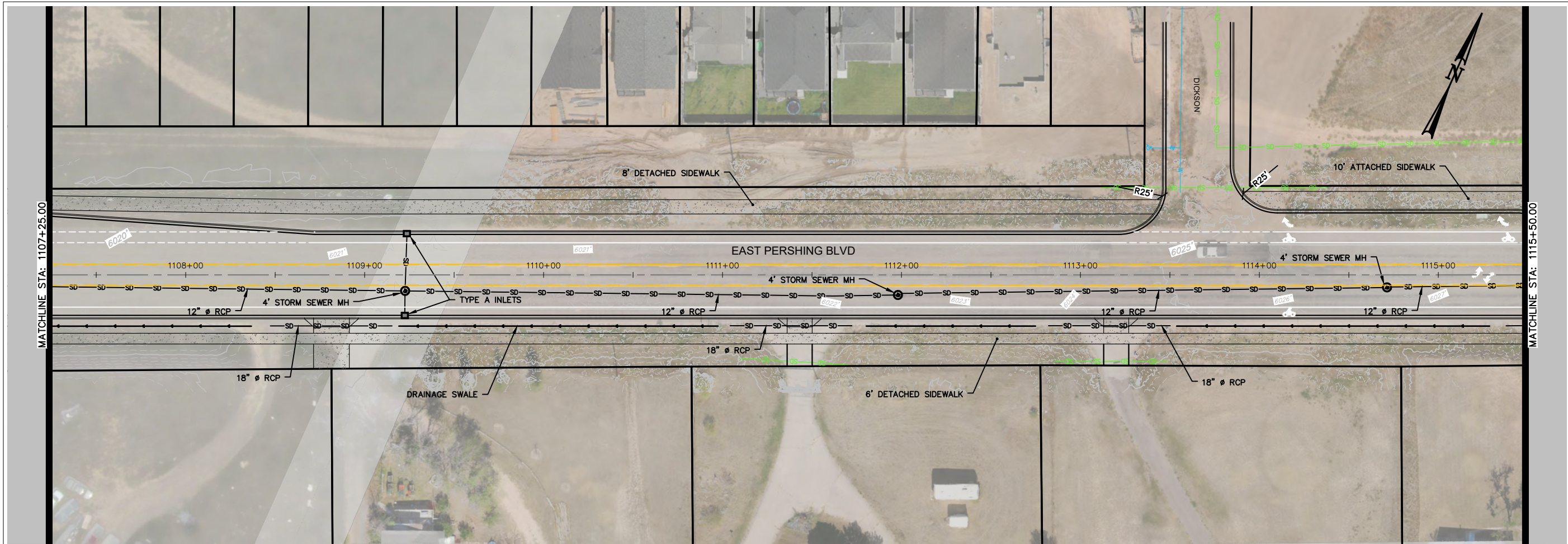
CHEYENNE MPO

E PERSHING BOULEVARD  
CHEYENNE, WY

E PERSHING BLVD -  
STA 1099+00 TO  
1107+25

**C3.13**

LAST SAVED: 7/15/2022 12:04 PM BY: SKYLER HELFRICH  
C:\Users\SkylrH\OneDrive - Y2 Consultants, LLC\Projects\21072-East Pershing Boulevard\Civil\ACAD\21072\_DESIGN\PLP.dwg



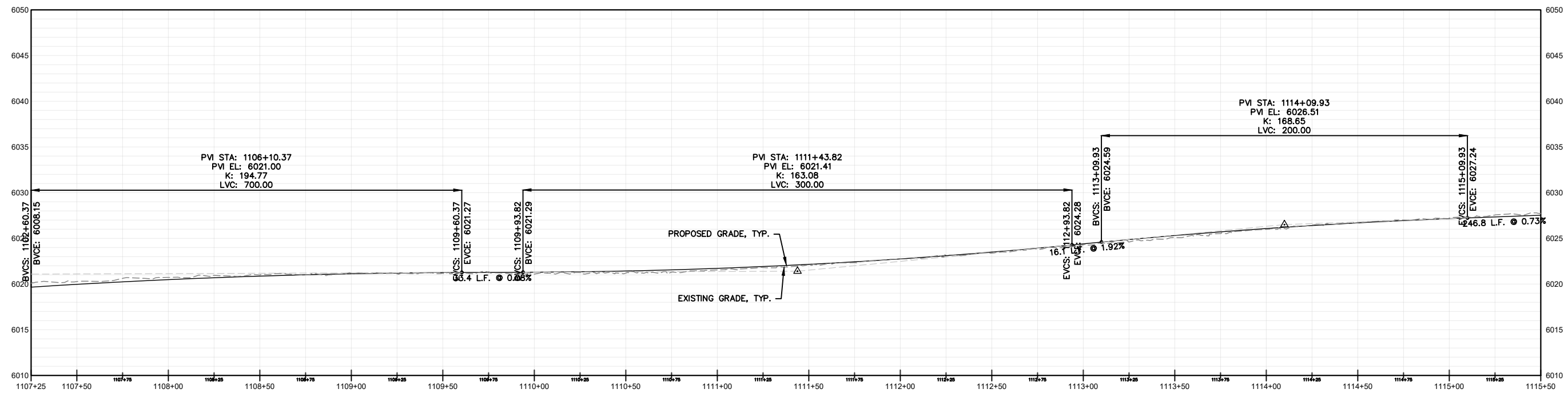
DATE: 7/15/2022  
 DRAWING SET TITLE: 35% DRAFT  
 DRAWN BY: SAH  
 CHECKED BY: SAH JOB #: 21072

**Y2 CONSULTANTS**  
 ENGINEERING, SURVEYING & PLANNING  
 LANDSCAPE ARCHITECTURE, GIS  
 NATURAL RESOURCE SERVICES  
 y2consultants.com  
 307.733.2559

**DRAFT**  
 NOT FOR CONSTRUCTION

0 30' 60'  
 WHEN PRINTED ON 11"X17"  
 PLANS SCALE IS: 1"=60'

P-EAST PERSHING BOULEVARD PROFILE  
 24x36 SHEET SCALE: HORIZ. 1" = 30' VERT. 1" = 6'  
 START STA: 1107+25.00, END STA: 1115+50.00

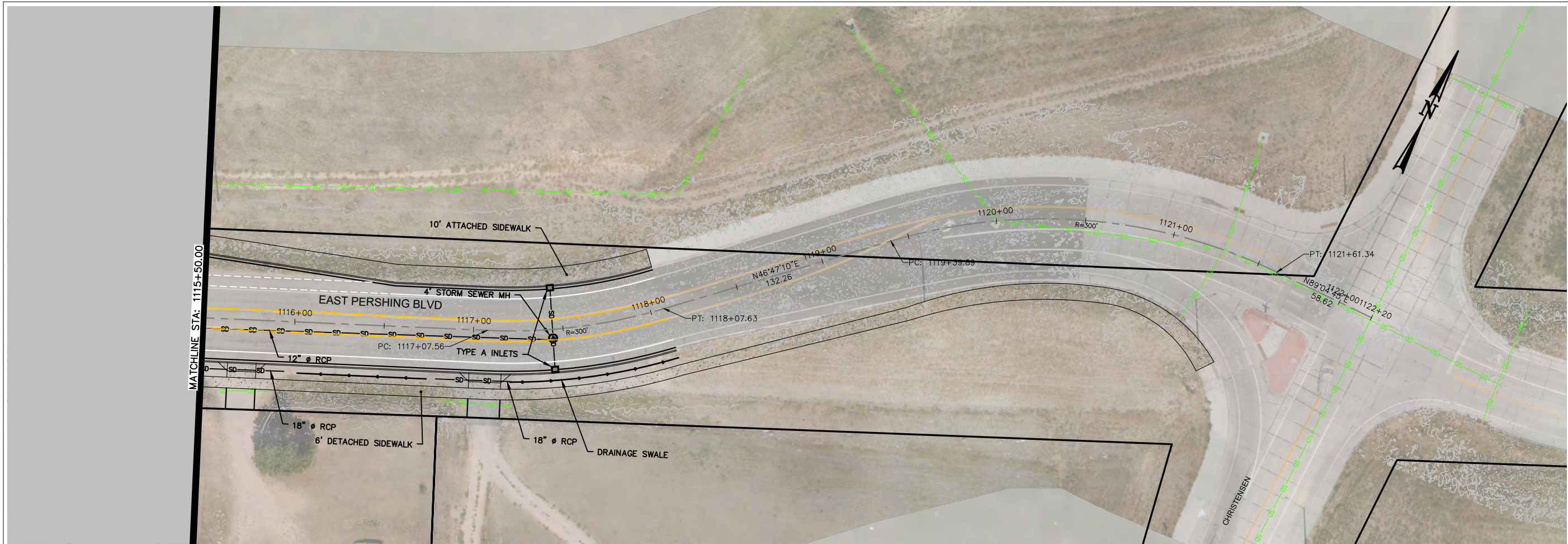


E PERSHING BOULEVARD - 35%  
 CHEYENNE MPO  
 E PERSHING BOULEVARD  
 CHEYENNE, WY

E PERSHING BLVD -  
 STA 1107+25 TO  
 1115+50

C3.14

LAST SAVED: 7/15/2022 12:04 PM BY: SKYLER HELFRICH  
 C:\Users\SkylrH\OneDrive - Y2 Consultants, LLC\Projects\21072-East Pershing Boulevard\Civil\ACAD\21072\_DESIGN\3PAP.dwg



DATE	7/15/2022
DRAWING SET TITLE	35% DRAFT
DRAWN BY:	SAH
CHECKED BY:	SAH
JOB #:	21072

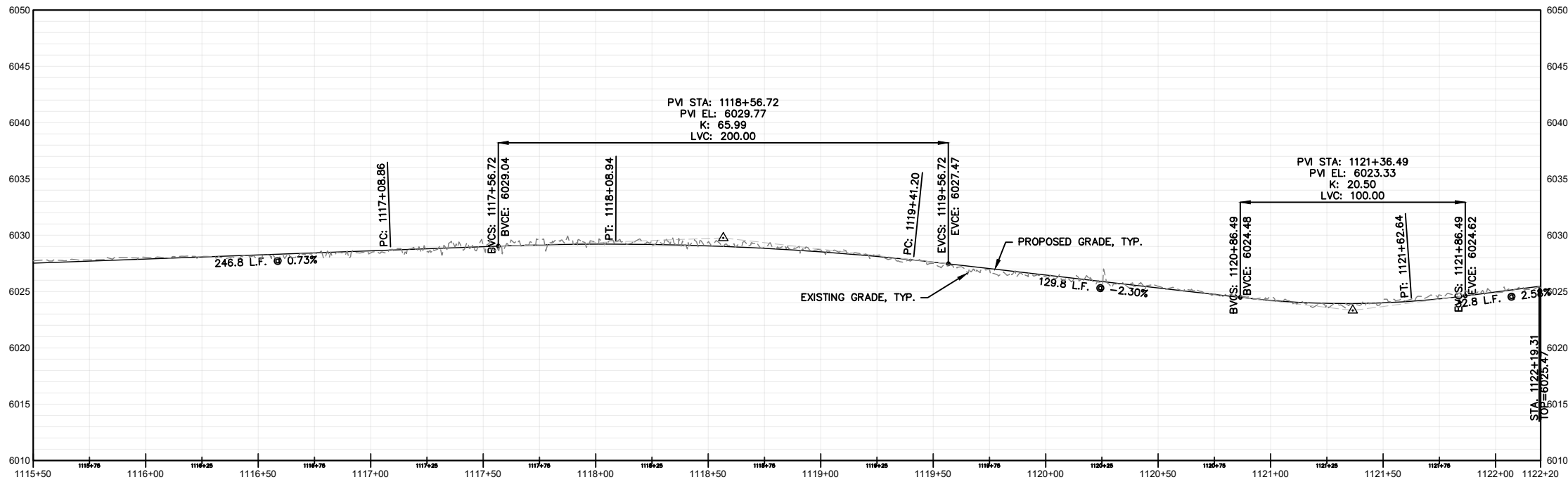
**Y2 CONSULTANTS**  
 ENGINEERING, SURVEYING & PLANNING  
 LANDSCAPE ARCHITECTURE, GIS  
 NATURAL RESOURCE SERVICES

Y2consultants.com  
 307.733.2559

**DRAFT**  
 NOT FOR  
 CONSTRUCTION

**P-EAST PERSHING BOULEVARD PROFILE**  
 24x36 SHEET SCALE: HORIZ. 1" = 30' VERT. 1" = 6'  
 START STA: 1115+50.00, END STA: 1122+19.56

0 30' 60'  
 WHEN PRINTED ON 11"X17"  
 PLANS SCALE IS: 1"=60'



LAST SAVED: 7/15/2022 12:04 PM BY: SKYLER HELFRICH  
 C:\Users\SKYLER\OneDrive - Y2 Consultants, LLC\Projects\21072-East Pershing Boulevard\Civil\ACAD\21072\_DESIGN\PLP.dwg

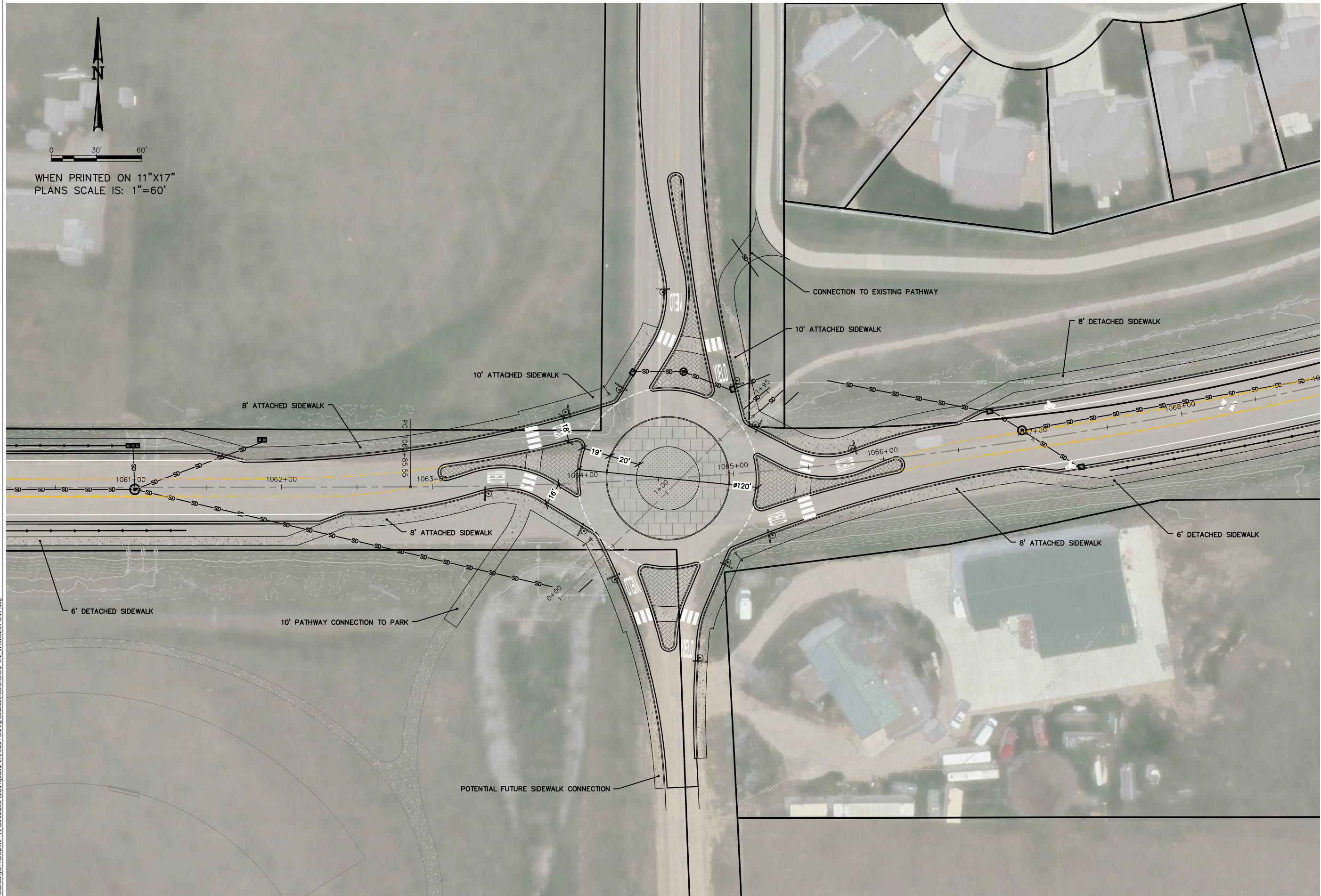
E PERSHING BOULEVARD - 35%  
 CHEYENNE MPO  
 E PERSHING BOULEVARD  
 CHEYENNE, WY

E PERSHING BLVD -  
 STA 1115+50 TO  
 1123+75

**C3.15**



WHEN PRINTED ON 11"X17"  
PLANS SCALE IS: 1"=60'



LAST SAVED: 7/10/2022 7:57 PM BY: SKYLER HELFRICH  
C:\Users\SkylereH\OneDrive - Y2 Consultants, LLC\Projects\21072-Enel Preshing Boulevard\Civil\ACAD\21072\_INTERSECTION.P.dwg

DRAWING SET TITLE	35% DRAFT
DATE	7/15/2022
DRAWN BY:	SAH
CHECKED BY:	SAH
JOB #:	21072

**Y2 CONSULTANTS**  
ENGINEERING, SURVEYING & PLANNING  
LANDSCAPE ARCHITECTURE, GIS  
NATURAL RESOURCE SERVICES

**Y2 CONSULTANTS**  
y2consultants.com  
307.733.2559

**DRAFT**  
NOT FOR  
CONSTRUCTION

E PERSHING BOULEVARD - 35%  
CHEYENNE MPO  
E PERSHING BOULEVARD  
CHEYENNE, WY

INTERSECTION -  
WHITNEY & E  
PERSHING

**C3.16**