



# EAST PERSHING BOULEVARD

CORRIDOR STUDY



Y2 Consultants, LLC



# Agenda

- Existing Conditions
- Traffic Analysis
- Public Engagement
- Proposed Corridor Treatments
- Drainage Review
- Phasing of Improvements
- Questions



# Existing Conditions

## Driving Forces:

- Development along corridor is reshaping the community
  - Saddle Ridge Sub division
  - Elementary schools
    - Sunrise
    - Saddle Ridge
    - Proposed new school in development
- Connection of Christensen to Campstool Interchange
- New East Cheyenne Park is currently under its master planning phase



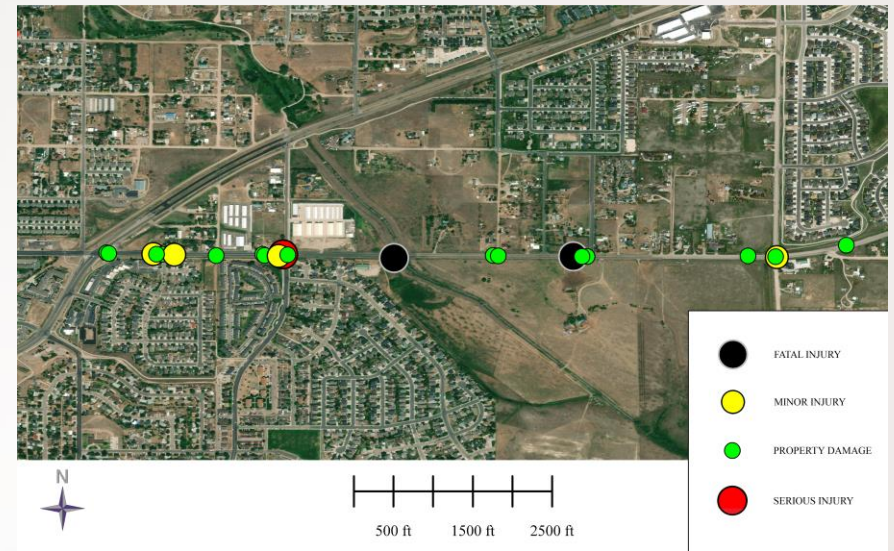
## Creating safer and connected communities:

- Existing sections promotes speeding
- Largely devoid of pedestrian and bicycle accommodations
- Need for protected pedestrian crossing for park
- Inconsistent Right Of Way from Wenandy to Fireside drive

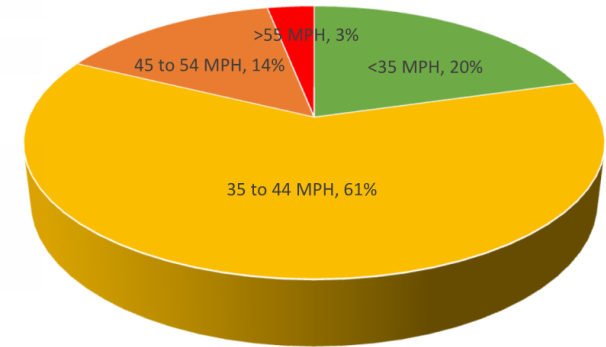


# Traffic Analysis

- Safety Review – Core Issue
  - 85<sup>th</sup> percentile speed is 10 MPH over posted speed
  - In some locations >15 MPH over
- Traffic Volumes and Capacity
  - Design year of 2045
  - A three-lane section is more than adequate
- Intersection of Whitney and Pershing
  - Anticipated to encounter issues around 2026
    - Full build out of Saddle Ridge Development
    - Creation and build out of East Park
  - Four – way stop LOS B
  - Roundabout – LOS A



Speed on E Pershing Boulevard  
West of Taft  
Speed Limit 35 MPH



■ <35 MPH ■ 35 to 44 MPH ■ 45 to 54 MPH ■ >55 MPH

# Public Engagement

## Public Engagement Phase I

- Saddle Ridge Elementary Open House #1
- Social Pinpoint website

Acknowledgement of speeding issues

Desire for pedestrian accommodations

Open to roundabout at Whitney



## Public Engagement Phase II

- Baggs Elementary Open House #2

Reaffirmed desire for pedestrian accommodations

Expressed support for addition of turn lanes

Conveyed desire for turn lane at East Park

Identified additional safety issues

Grade separated crossing



# Public Engagement – Social Pinpoint

1273

Total Visits

287

Unique Users

0:47

Avg Time (min)

63

Unique Stakeholders

4

Comments

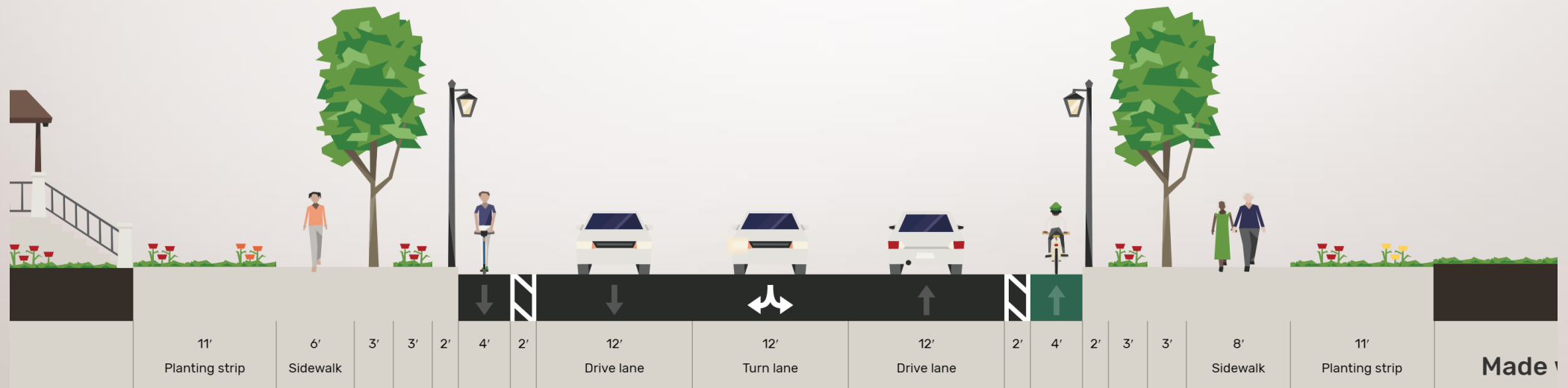
72

Survey Responses



# Proposed Corridor Treatments

- Typical Section per Cheyenne UDC
  - Three lane with Shared Left Turn
  - Curb and Gutter
  - Bike lanes
  - Alternating 6' & 8' width detached sidewalks



# Drainage Review

- Four discharge locations
  - Dry Creek
  - Private Property
  - East Park / Whitney Road South
  - Christensen Road South
- Open ditch vs Subsurface infrastructure
- Area of Concern – Drainage flowing onto Private property





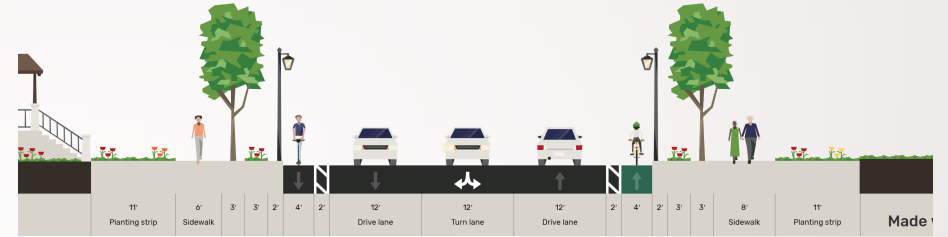
# Drainage Update

- US 30 to Dry Creek
  - Open ditch retention with controlled release into dry creek
  - Curb cuts to direct flows
  - Slight increase in required capacity
- Dry Creek to Whitney
  - Water will be directed to the east park property
  - Inlets and subsurface infrastructure has been proposed to redirect water currently flowing onto private property
  - Combination of open ditch and subsurface infrastructure
- Whitney to Christensen
  - South side has historic issues with drainage
  - Curb and gutter with inlets
  - Subsurface piping
  - Conveyed to NE corner of Whitney and Pershing



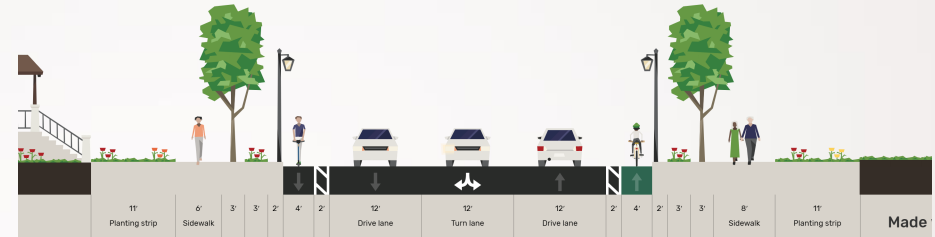
# Short Term Corridor Improvements

- Pedestrian accommodations
- Safety – signage & enforcement
- Four-way stop at Whitney and Pershing
- Enhanced crossing protection at Whitney
- Restriping bike lane



# Long Term Corridor Improvements

- Redefining jurisdictional boundaries
- Bridge widening
- Geometric realignment around Whitney
- Roundabout
- Right turn deceleration lanes
- Drainage improvements
- Lighting
- Access Management for private driveways
- Right of way Acquisition



# Project Phasing & Opinion of Cost

- I. Hayes Avenue to Fireside Drive – \$4.2 Million
  - Geometric realignment
  - Roundabout at Whitney Road
  - Subsurface drainage improvements
  - Right of way acquisition
- II. Taft / Polk Avenue to Hayes Avenue – \$2.1 Million
  - Bridge widening
- III. Fireside Drive to Christensen Road – \$4.0 Million
  - Subsurface drainage improvements
- IV. US 30 to Taft / Polk Avenue – \$1.4 Million

All estimates based on 2021 WYDOT Weighted Average Bid Prices





Thank You  
For Your Time!

Y2 Consultants, LLC

