



## **1.0 Applicant Information**

Roaring Fork Midstream, LLC  
1125 17<sup>th</sup> Street, Suite 650  
Denver, CO 80202

### **1.1 Contacts**

Tim Garnett (720) 923-5585  
tim.garnett@roaringforkmidstream.com

Tom Williams (720) 923-5586  
t.williams@roaringforkmidstream.com

## **2.0 Summary Statement of the Project**

### **2.1 Description of the Pipeline Product**

Roaring Fork Midstream (RFM) provides gathering and processing services to producers in Weld County, Colorado and Laramie County, Wyoming. RFM is proposing to construct approximately 20 miles of new 12-inch crude oil pipeline.

### **2.2 Description of the Project**

RFM is proposing to construct and operate the North Silo High Pressure Crude Oil Pipeline (Project), a 20-mile 12-inch crude oil pipeline that will begin at the future North Silo Crude Terminal (not yet constructed) located in Section 2 Township 16N Range 64W and terminate at the existing Tallgrass Pony Express Pipeline (PXP) interconnect at Section 21 Township 14N Range 64W. The Project is shown on the attached Project Overview Map.

Permanent right-of way (ROW) will be 30 to 50 feet wide with construction ROW of 50 to 150 feet (which includes the temporary and permanent ROW). The ROW is defined as the right to cross the property and does not indicate fee ownership.

Attached is a map showing the preferred route as well as a list of the land ownership and parcel information for the parcels directly impacted. RFM has obtained easements across all properties contained in this list.

RFM does not have a fee interest in any of the property crossed by the ROW; therefore, a certificate of conveyance is not necessary for this application.

This route was selected as the preferred project route as it balances environmental sensitivity, operational efficiency, cost minimization, and landowner approval. As such, RFM proposes this alignment as the preferred route as it helps meet the operational needs of the Project while minimizing impacts to the surrounding community and environment.

RFM has completed surveys for natural resources and for cultural/archeological resources on the proposed project route. The preferred project route offers the strongest combination of environmental and stakeholder sensitivity, operational efficiency, and cost minimization. As such, RFM believes that the preferred route represents the most balanced means of ensuring that the purpose and need of the project are met.

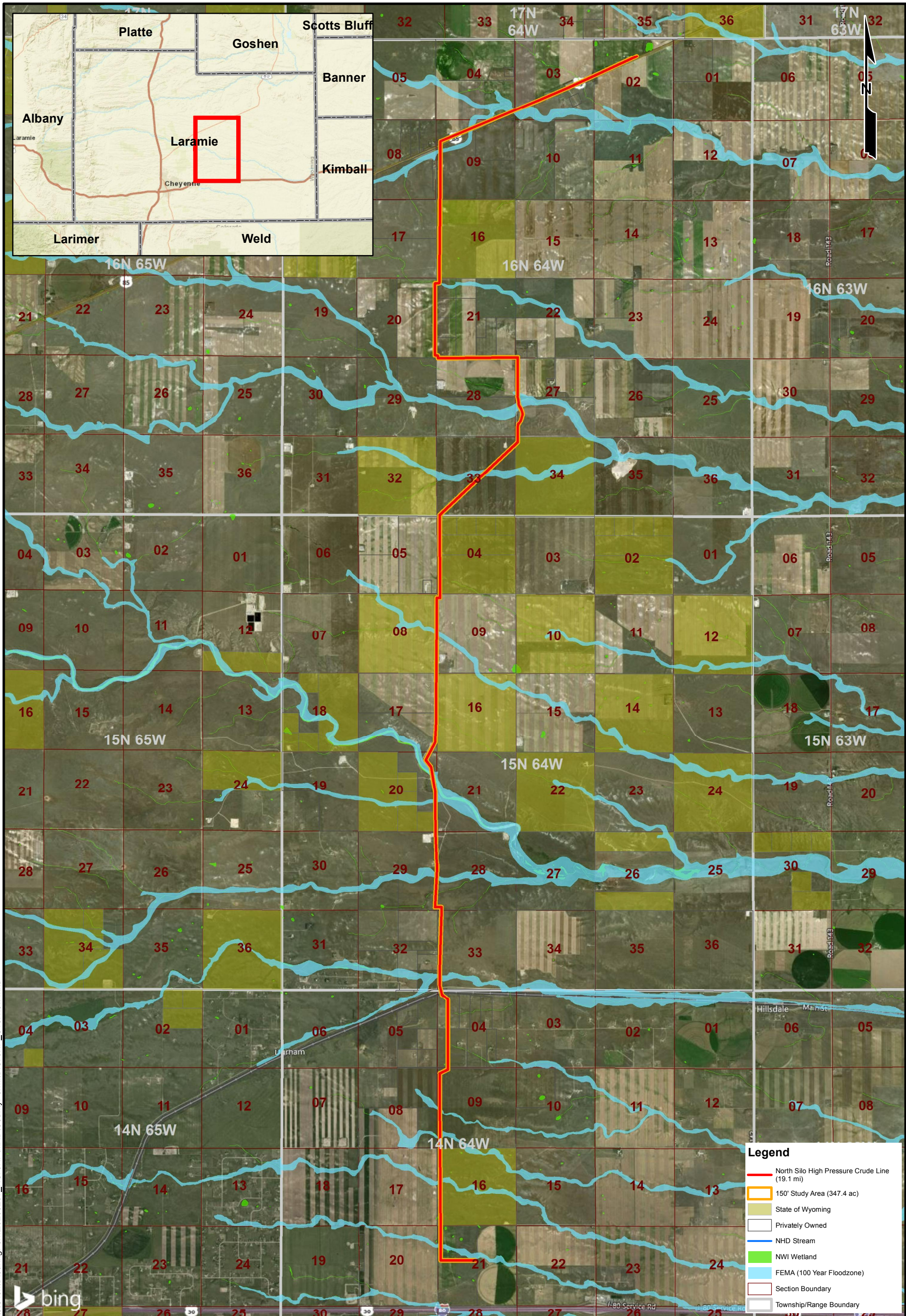


### 2.3 Floodplains

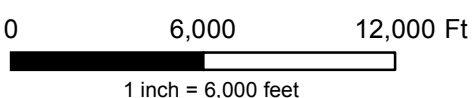
The Project will cross 15 mapped floodplains. RFM has prepared and submitted 15 Floodplain Development Permits to the Laramie County Land Planning and Development Office.

### 2.4 Grading, Erosion and Sediment Control (GESC) Permit

RFM has prepared a Storm Water Pollution Prevention Plan (SWPPP) for submittal to the Wyoming Department of Environmental Quality (DEQ) under the Wyoming Pollutant Discharge Elimination System (WyPDES) Program (General Storm Water Permit WYR10-0000). This SWPPP meets the requirements of a GESC Plan for the County. RFM will provide a copy of the approved DEQ WyPDES Permit number once it is received.



- Legend**
- North Silo High Pressure Crude Line (19.1 mi)
  - 150' Study Area (347.4 ac)
  - State of Wyoming
  - Privately Owned
  - NHD Stream
  - NWI Wetland
  - FEMA (100 Year Floodzone)
  - Section Boundary
  - Township/Range Boundary



The information included on this graphic representation has been compiled from a variety of sources and is subject to change without notice. Kleinfielder makes no representations or warranties, express or implied, as to accuracy, completeness, timeliness, or rights to the use of such information. This document is not intended for use as a land survey product nor is it designed or intended as a construction design document. The use or misuse of the information contained on this graphic representation is at the sole risk of the party using or misusing the information.



www.kleinfielder.com

PROJECT NO.	20203297
DRAWN:	2/26/2020
DRAWN BY:	SMW
CHECKED BY:	MR
FILE NAME:	NSiloHP_Overview.mxd

**PROJECT OVERVIEW MAP**

RFM North Silo High Pressure Crude Line  
Laramie County, Wyoming

FIGURE  
**1**

\\azrgis\corp01\GIS\_Projects\Client\RoaringFork\20203297\_NSiloHP\MXD\CountyPermit\NSiloHP\_Overview.mxd

RESOLUTION # \_\_\_\_\_

**ENTITLED: A RESOLUTION FOR A PUBLIC HEARING FOR THE ROARING FORK  
MIDSTREAM NORTH SILO HIGH PRESSURE CRUDE OIL PIPELINE.**

**WHEREAS**, Wyoming State Statutes §18-5-201 to 18-5-208; §18-5-301 to 18-5-315 authorize Laramie County, in promoting the public health, safety, morals and general welfare of the county, to regulate the use of land through zoning in unincorporated Laramie County; and

**WHEREAS**, The Laramie County Board of Commissioners have previously adopted the Laramie County Land Use Regulations; and

**WHEREAS**, this application conforms with Section 2-2-127 of the Laramie County Land Use Regulations governing approval criteria for energy pipelines; and

**NOW THEREFORE BE IT RESOLVED BY THE GOVERNING BODY OF LARAMIE COUNTY, WYOMING**, as follows:

The Laramie County Board of Commissioners finds that this application satisfies Section 2-2-127 of the Laramie County Land Use Regulations in that both a public hearing has occurred and a route map has been or is being reviewed by the Laramie County Planning Department.

**PRESENTED AND ADOPTED** this \_\_\_\_\_ day of \_\_\_\_\_, 2020.

LARAMIE COUNTY BOARD OF COMMISSIONERS

\_\_\_\_\_  
Board Chairman

ATTEST:

\_\_\_\_\_  
Debra K. Lee, Laramie County Clerk

Reviewed and approved as to form:

  
\_\_\_\_\_  
Laramie County Attorney's Office