



Metropolitan Planning Organization

## MEMO

**TO:** Charles Bloom, Planning and Development Director  
**FROM:** Tom Mason - Director Cheyenne MPO  
**DATE:** February 8, 2022  
**SUBJECT:** *Connect 2045 – Master Transportation Plan Amendments*

---

Following a detailed review of the *Master Transportation Plan (MTP)* in *Connect 2045* we have found the following recommended amendments. The MPO Office is preparing an update to the *City's Official Map* which is developed from the newest MTP. Comparisons were made between the *2015 Official Map*, the *2021 Existing Functional Classification Map* and the *Master Transportation Plan* from *Connect 2045*. These detailed comparisons lead us to find the following list of changes we recommend as amendments to the 2020 MTP. Additionally, some of the proposed corrections fill-in gaps on GIS line work.

1. Railroad Road (CO 215) from US 30 to Four Mile. Reclassify from a Minor Collector to a Major Collector to match the Existing Functional Classification.
2. Happy Jack Road (WYO 210) from Logistics Drive to West Urban Boundary. Reclassify from a Major Collector to a Minor Arterial to match the Existing Functional Classification.
3. South Greeley Highway (US 85) from Colorado State Line to Terry Ranch Road. Reclassify from a Minor Arterial to a Principal Arterial to match WYDOT classification on the NHS.
4. Archer Parkway (US 30) from I-80 Service Road to East Bound I-80 on- and off-ramp intersection. Reclassify from a Minor Arterial to a Principal Arterial to match the Existing Functional Classification.
5. Converse from Lincolnway to Pershing. Reclassify from a Principal Arterial to a Minor Arterial to match the Existing Functional Classification.
6. Crane Bluff between Point Bluff and Ogden should be reclassified from a Minor Collector to a local street and removed from MTP, and Crane Bluff between Ogden to Converse is not platted and removed from the MTP.
7. Point Bluff between Plainview and Wild Bluff should be reclassified from a Minor Collector to a local street and removed from the MTP.
8. Mason Way between Converse and Wal Mart parking lot should be reclassified from a local street to a Major Collector to match the Existing Functional Classification.
9. Oakhurst between Evers to Bishop should be reclassified from a Major Collector to a local Street to match the Existing Functional Classification.
10. Evers between Oakhurst to Brittney should be reclassified from a local street to a Minor Collector to match the Existing Functional Classification.



11. Brittney between Evers to Bishop should be reclassified from a local street to a Minor Collector to match the Existing Functional Classification.
12. Klipstein between I-25 Service Road (Bishop) to Telephone Road (CO 120) should be reclassified from a local road to a Minor Collector to match the Existing Functional Classification.
13. Holmes between Ridge and College should be reclassified from a local road to a Minor Collector to match the Existing Functional Classification.
14. Wilderness Trail between Farthing and Dixon should be reclassified from a local street to a Minor Collector to match Existing Functional Classification.
15. Stewart between Westedt and Railroad Road should be reclassified from a local road to a Minor Collector to match Existing Functional Classification.
16. Westedt between Stewart and end of public road should be reclassified from a local road to a Minor Collector to match Existing Functional Classification.
17. Four Mile between Reese to Railroad Road should be reclassified from a local road to a Minor Collector to match Existing Functional Classification.
18. HR Ranch Road between Hales Ranch Road to Prairie Center Circle should be reclassified from a local road to a Minor Collector to match Existing Functional Classification and complete gap.
19. York from College to Carol Ann Way should be reclassified from a local road to a Minor Collector to match Existing Functional Classification.
20. Grand Harmony from Center Drive to Allison Road should be reclassified from a local street to a Minor Collector to match Existing Functional Classification.
21. Sweetgrass Drive between College Drive to High Plains Road should be a Major Collector to match approved PUD.
22. Murray Road between US 85 and Avenue C should be reclassified from local road to a Minor Collector to match Existing Functional Classification.
23. Murray Road between Avenue C and High Plains Road should be reclassified from a Minor Arterial to a Minor Collector to accommodate the approved PUD and to permit access spacing.
24. Artesian between US 85 (SGH) and Avenue C should be reclassified from a Minor Collector to a Major Collector for signal spacing on US 85 (SGH).
25. Nation between US 85 and Avenue C should be reclassified from a local road to a Minor Collector for appropriate signal spacing on US 85.
26. Loving Trail between Wisent Road and High Plains Road as per Bison Business Park 1<sup>st</sup> and 2<sup>nd</sup> final plats classified as Major Collector and matching Existing Functional Classification.
27. Dayshia Lane between US 85 and Loving Trail as per Bison Business Park 1<sup>st</sup> and 2<sup>nd</sup> final plats classified as Major Collector and to match Existing Functional Classification.
28. Wisent Road between US 85 and east end of plat as per Bison Business Park 2<sup>nd</sup> Filing Plat as a Major Collector and to match Existing Functional Classification.



- 29.** East Terry Ranch Road extension from WYDOT Port of Entry east property line to Loving Trail as per Bison Business Park 2<sup>nd</sup> Filing as a Major Collector to match plat and MTP.
- 30.** Avenue C between College Drive to High Plains Road should be reclassified from a Major Collector to a Minor Arterial to match Sweetgrass PUD.
- 31.** Nation between Avenue C and Sweetgrass should be reclassified from a Major Collector to a Minor Collector to match amendment #25 and the Sweetgrass PUD.

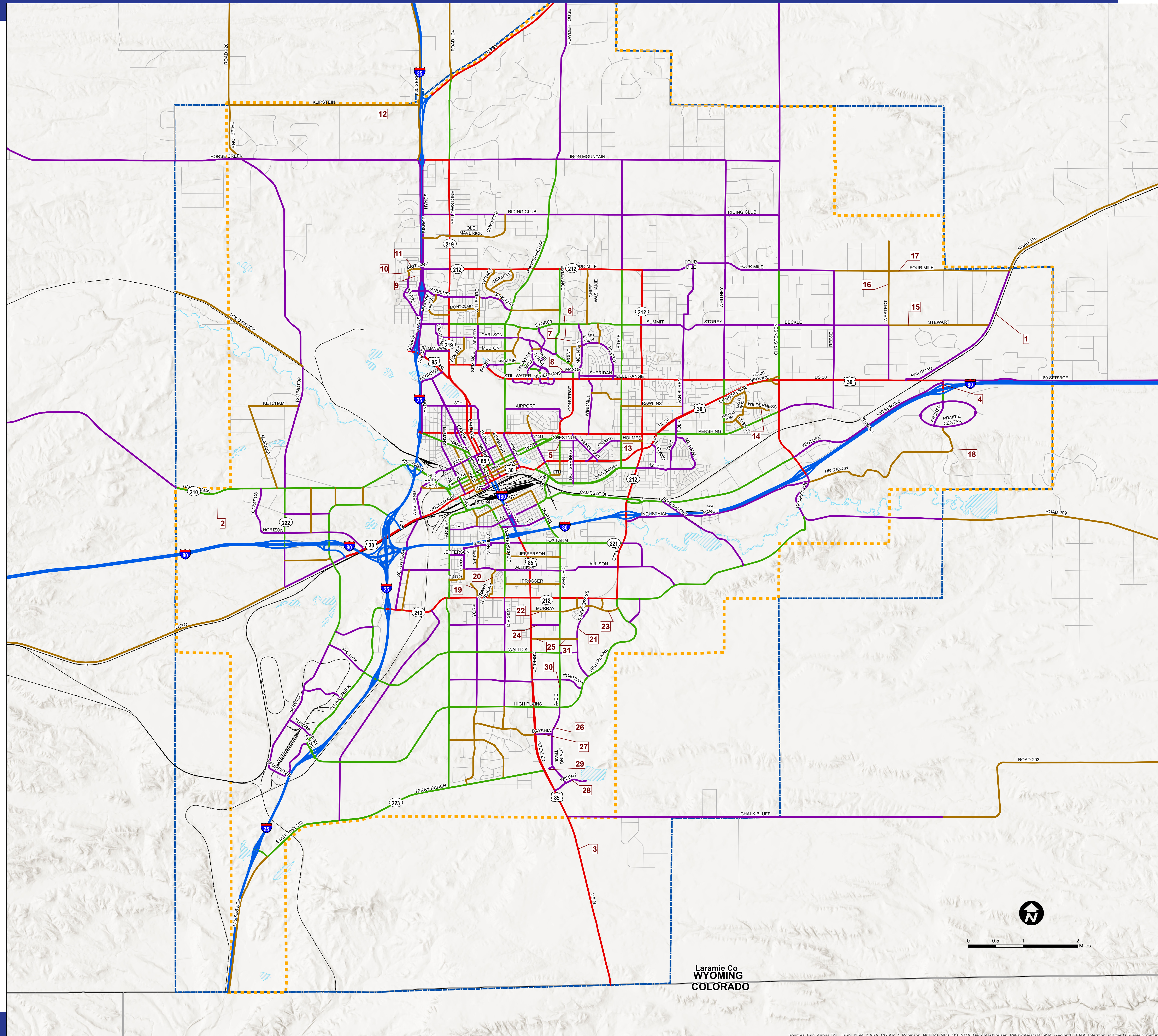


## Cheyenne Area Master Transportation Plan 2022 Update

### Legend

#### Master Transportation Plan 2022 Update

- Interstate
- Principal Arterial
- Minor Arterial
- Major Collector
- Minor Collector
- Railroad
- MPO Urban Boundary
- MPO Planning Boundary
- Laramie County Boundary
- Water Feature
- 19 MTP 2022 Updates



Sources: Esri, Airbus DS, USGS, NGA, NASA, CGIAR, N Robinson, NCEAS, NLS, OS, NMA, Geodatis/tyreisen, Rijkswaterstaat, GSA, Geoland, FEMA, Intermap and the GIS user community





**RESOLUTION NO. \_\_\_\_\_**

**ENTITLED: “A RESOLUTION AMENDING THE CHEYENNE AREA LONG-RANGE TRANSPORTATION PLAN MAP OF CONNECT 2045, THE LATEST TRANSPORTATION PLAN UPDATE OF PLANCHEYENNE.”**

**WHEREAS**, *PlanCheyenne*, as amended by *PlanCheyenne: Reflections and Progress*, adopted by the Board of County Commissioners by Resolution No. 140311-02, is the Comprehensive Plan for portions of Laramie County; and

**WHEREAS**, *Connect 2045: Update to the Master Transportation and Future Land Use Plan of PlanCheyenne* adopted by the Board of County Commissioners by Resolution No. 201201-8, is the Transportation Master Plan Update for portions of Laramie County; and

**WHEREAS**, the Long-Range Transportation Plan Map is illustrated in *Connect 2045* as Map 39 on page 136;

**WHEREAS**, corrections to *Connect 2045* are proposed to modify roadway designations that were inadvertently applied from previous map adoptions, and modification made to roadway designations or classifications in accordance with previously approved plans and maps, as shown in Attachment A which is comprised of three pages of a Memo dated February 8, 2022 plus a corresponding map which is attached hereto and incorporated herein; and

**WHEREAS**, these amendments have been processed in accordance with the procedures outlined in *PlanCheyenne 2006*; and

**WHEREAS**, in addition, these amendments have been processed in accordance with procedures outlined on Page 17 of *PlanCheyenne: Reflections and Progress*, as amended; and

**WHEREAS**, the Cheyenne Metropolitan Planning Organization Technical Committee reviewed the proposed Long-Range Transportation Plan Map amendments and recommended the changes; and

**WHEREAS**, a public hearing to receive public input and comments on the proposed Long-Range Transportation Plan Map amendments was held before the Laramie County Planning Commission on March 10, 2022 and the Planning Commission approved the proposed Transportation Plan amendments; and

**WHEREAS**, these proposed Long-Range Transportation Plan Map amendments have been introduced to the City of Cheyenne Governing Body on February 28, 2022; and

**WHEREAS**, plan amendment processes and procedures required by *PlanCheyenne*, as amended, have been followed to amend the Long-Range Transportation Plan Map of *Connect 2045*.



**NOW, THEREFORE, BE IT RESOLVED BY THE LARAMIE COUNTY BOARD OF COMMISSIONERS, LARAMIE COUNTY, WYOMING:**

**THAT**, the Laramie County Board of Commissioners hereby adopts the amendments to the Cheyenne Area Long-Range Transportation Plan Map of *Connect 2045*, the latest transportation plan update of PlanCheyenne.

PRESENTED, READ AND ADOPTED THIS \_\_\_\_ DAY OF \_\_\_\_\_, 2022.

BOARD OF LARAMIE COUNTY COMMISSIONERS

\_\_\_\_\_  
Chairman

(S E A L)

ATTEST:

\_\_\_\_\_  
Debra Lee, Laramie County Clerk

Received and approved as to form:

  
\_\_\_\_\_  
Laramie County Attorney's Office