

**RESOLUTION NO.**

**A RESOLUTION AUTHORIZING THE SUBMISSION OF A GRANT APPLICATION TO THE CHEYENNE COMMUNITY PUBLIC RECREATION DISTRICT, FOR FUNDING TOWARDS BASKETBALL EQUIPMENT FOR THE EVENTS CENTER, ON BEHALF OF THE GOVERNING BODY OF LARAMIE COUNTY, WYOMING IN THE AMOUNT OF \$50,000.**

**FOR THE PURPOSE OF:** REQUESTED FUNDS WILL BE USED BY THE COUNTY TO PURCHASE BASKETBALL EQUIPMENT (HOOPS, SCOREBOARDS, BENCHES, SHOT CLOCK AND ACCESSORIES) FOR THE EVENTS CENTER.

WITNESSETH

**WHEREAS**, the Governing Body of Laramie County desires to participate in the Cheyenne Community Public Recreation District grant by sponsoring this grant application to assist in financing this project; and

**WHEREAS**, the Governing Body of Laramie County has been provided with preliminary cost estimates and information on this project; and

**NOW, THEREFORE, BE IT RESOLVED BY THE GOVERNING BODY OF LARAMIE COUNTY** that a grant application in the amount of \$50,000 be submitted to the Cheyenne Community Public Recreation District for consideration of assistance in funding basketball equipment for the events center.

**BE IT FURTHER RESOLVED**, that Sandra Newland, or her successor in the position of Laramie County Grants Manager, is appointed as agent of the Laramie County Board of Commissioners to execute and submit applications and certifications for these funds and to receive funds and implement the programs funded under this grant.

**PASSED, APPROVED AND ADOPTED THIS 5<sup>th</sup> DAY OF MAY, 2020.**

By: \_\_\_\_\_  
Gunnar Malm, Chairman

Date: \_\_\_\_\_

ATTEST:

\_\_\_\_\_  
Debra Lee, Laramie County Clerk

Date: \_\_\_\_\_

Received and Approved as to Form only By:

\_\_\_\_\_  
Mark Voss, County Attorney

Date: 4/28/21

## 2020 Cheyenne Community Public Recreation District Narrative

1. Laramie County purchased the Archer Complex in 2004. Since its purchase, the land is now home to several county departments to include EMA, Planning, Coroner, Public Works, the Juvenile Justice Center and the Shooting Sports Complex. Archer is also home to the Laramie County Fair operations and Events Department. The Fair and Events Department have several buildings located at Archer to include the Fair Office, Commercial Kitchen, Community Center and the newly built Event Center at Archer.

Archer is quickly becoming an activity and destination spot within Laramie County. The county has recruited several outside organizations and events to be hosted at the facility to include Windy Wyoming, a Motocross Park, and a dog agility course. Events are booked through the Laramie County Events Department throughout the year and include events such as drive in movies, sporting/fundraising events, weddings, and agricultural events. There is also an RV Park out at Archer to accommodate the influx of visitors to Laramie County. The RV park has been operational since June 2017 and consists of 20 wet sites (water & electrical) and 60 dry sites (electrical).

The Laramie County Events Department currently brings approximately 80 events to the Archer complex per year. The average annual attendance is expected to attract over 47,940 people to the community. These events range from conventions, animal auctions, rodeos, 4H/FFA, meetings and various community events. These events bring large crowds to Archer and include children. We currently have a musical instrument park located within Leadership Park and a new playground structure to be installed in the spring of 2020 thanks to previous CCRD funds.

We are requesting funding to expand on the recreational opportunities out at the Archer Complex, by bringing basketball equipment to the events center for regional/national streetball or three on three tournaments, as well as for general use. The equipment could potentially generate a need for acquiring a hardwood floor for traditional tournaments. Laramie County does not have any existing county facilities or locations for basketball. We rely on the school districts (#1 & #2) and the City of Cheyenne for their gymnasiums and parks. Our request provides another avenue for the youth to pursue physical activity through basketball.

2. Laramie County as a whole and along with the Laramie County Events Department is seeking funding to assist in adding portable basketball equipment to the events center to be used all year round. This equipment includes basketball hoops, scoreboards, shot clocks and benches. The equipment is portable to promote easy storage and set up within the facility. The equipment could also be moved or used at other locations if desired.

Our expected outcomes are very simple; we anticipate greater usage of the events center in providing basketball equipment. We predict that the community will be excited about the proposed equipment and usage will be high. Having this recreation opportunity will provide the community of Laramie County with a safe recreational activity and space, as well as, attract outside interest for economic gain. Basketball provides youth with several tangible benefits to include exercise, balance, hand/eye coordination, good sportsmanship, agility, strategy, and social skills. With the long Wyoming winters, it is also nice to have an indoor activity that can be played year round.

If selected for funding, we could start immediately with the formal quote and bid process to select qualified vendors to provide this equipment. County procedures for purchasing would be followed. We have conducted basic research into existing vendors who might be interested in our project, some of this documentation is attached providing pictures on the types of equipment we are requesting. Dan Ange, our Events Center Director, provided all attached quotes on the proposed equipment.

3. The Events Center is a public facility that is available seven days a week along with hosting and attracting a variety of events and activities. The requested basketball equipment would allow us to add another recreational outlet for youth in our community. As of April of 2020, the Event Center finished construction of retractable, modular seating for up to 1,100 people. These bleacher units are moveable and can be configured to accommodate many events, including prospective basketball tournaments. Our requested project has the potential to benefit all community members who either play or watch basketball.

The Archer Complex is located right off of I-80 and we anticipate non-residential visitors stopping by to participate in basketball events. There are a wide array of opportunities that could be provided in thanks to having the requested basketball equipment. We estimate that thousands of individuals would benefit from the project if funded. Laramie County would be responsible for all replacement and maintenance costs associated with our request to keep the equipment operational into the future.

4. Budget Details

We are requesting \$50,000 for basketball equipment; we are open and flexible to the type and style of equipment, but here is what we think would be the best fit. Pictures and additional information is attached.

Basket Ball Hoops (4)	\$30,000.00
Rolling Scoreboard (2)	\$6,000.00
Wireless System for Scoreboards (2)	\$1,600.00
Scoreboard Wireless receiver (2)	\$1,000.00
Remote (2)	\$100.00
Shot Clock (2)	\$5,000.00
Shot Clock Wireless Receiver 4)	\$1,600.00
Console Carrying Case (2)	\$200.00
Benches (8)	\$3,500.00
Shipping Costs	\$1,000.00

TOTAL REQUEST: \$50,000.00

Laramie County also takes responsibility for any project cost overruns associated with shipping, installation, setup, etc.)

5. Laramie County

- a. Gunnar Malm-Chairman  
310 W. 19<sup>th</sup> Street, Suite 300  
Cheyenne, WY 82001  
307-633-4260

[commissioners@laramiecounty.com](mailto:commissioners@laramiecounty.com)

- b. Sandra Newland-Laramie County Grants Manager  
310 W. 19<sup>th</sup> Street, Suite 140  
Cheyenne, WY 82001  
307-633-4201  
[snewland@laramiecounty.com](mailto:snewland@laramiecounty.com)
- c. Laramie County Events Department-  
3801 Archer Parkway  
Cheyenne, WY 82009  
Dan Ange, Events Director 307-633-4598 [dange@laramiecounty.com](mailto:dange@laramiecounty.com)

6. Please see attachments

CHEYENNE COMMUNITY PUBLIC RECREATION DISTRICT  
PROJECT SUBMISSION FORM

---

School, Department or Government entity requesting project: Laramie County, Wyoming

*Please complete the following questions on a separate sheet of paper and attach to project submission form with required signatures.*

- 1) Describe the need for the requested project based on the current situation.
- 2) Outline your proposed resolution to the above stated need. (i.e. scope of work, equipment, time frame, other mitigating factors)
- 3) Who in LCSD #1 and the community will benefit from the project? (i.e. specific groups/users, general public, visitors, community-wide residents, etc.) Approximately how many people will benefit from the project?
- 4) Provide an itemized list of project equipment and cost. If there is a specific source/vendor you would like to use for your project, please identify. Please also include any matching funds or in-kind donations that will be contributed to the project. If you would like assistance preparing your cost estimate, please contact any of the personnel listed on the cover letter to this application.
- 5) Provide contact information for all project sponsors, including summer contact information.
- 6) Please attach project documentation (i.e. catalog pages, vendor information, pictures, maps, drawings, etc.)

Note: Project updates will be required for all approved projects by January 15<sup>th</sup> and July 15<sup>th</sup> of the following year. In-District project updates will be provided by the appropriate Planning and Construction technician. Out of District project updates can be submitted via email to [sarak@laramie1.org](mailto:sarak@laramie1.org).

---

Signature of Principal

Date

Gunnar Ma1m

Chairman

Print Name

Title/Position

CHEYENNE COMMUNITY PUBLIC RECREATION DISTRICT  
PROJECT SUBMISSION FORM

Cost Estimate Form

School, Department or Government Entity: Laramie County, Wyoming

Project: Events Center Basketball Equipment

Funding Sources:		Estimated Cost:	
Requested from Rec Board	\$	Item Description:	
Matching Funds	\$ -	Basketball Hoops (4)	\$ 30,000.00
PTO Contributions	\$ -	Rolling Scoreboard (2)	\$ 6,000.00
In-Kind Contributions	\$ -	Wireless System for Scoreboard (2)	\$ 1,600.00
Other: <i>(Please describe)</i>	\$ -	Scoreboard Wireless	
Services to be provided by District:		Receiver (2)	\$ 1,000.00
		Remote (2)	\$ 100.00
		Shot Clock(2)	\$ 5,000.00
		Shot Clock Wireless	
		Receiver (2)	\$ 1,600.00
		Console Carrying Case (2)	\$ 200.00
		Benches (8)	\$ 3,500.00
		Estimated Shipping	\$ 1,000.00
		Estimated Installation	
<b>Installation(In-Kind Match)</b>			
<b>Total Funding Sources</b>	<b>\$ 50,000.00</b>	<b>Total Estimated Cost</b>	<b>\$ 50,000.00</b>

Please note the following items:

- Total funding sources and total estimated cost MUST balance
- Funding sources must include ALL funds available for the project
- **For assistance in preparing estimates, please contact any of the personnel listed on the cover letter to the application.**
- Please include source documentation for cost estimates (i.e. catalog pages, vendor information, quotes, etc.)

**Responsible for Project Installation if Required:**

\_\_\_\_\_  
Signature  
Gunnar Malm  
\_\_\_\_\_  
Print Name

\_\_\_\_\_  
Date  
Chairman  
\_\_\_\_\_  
Title/Position

For Official District Use Only
Reviewed by:
Date:
(Reviewed subject to final approval by Rec Board)







# the STORM

PORTABLE BASKETBALL SYSTEM



• Rim height adjusts for smaller players

• Extensive backboard selection in acrylic or tempered glass

• All First Team goals are direct mounted to eliminate backboard breakage when players hang on the rim

• Optional bolt-on TuffGuard™ backboard padding

• Post to backboard extension distance is 66"

**FREE!**

LTR 85

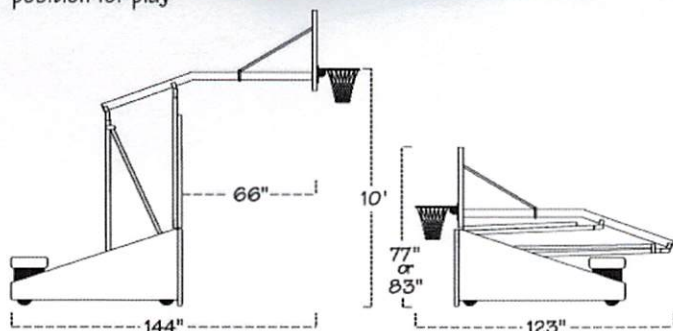
Base Pad Lettering Upon Request

• Adjustable overhang extension

• Safety padding covers front, sides and back of base unit

• Compact & Easy to roll

• 8" non-marking casters lock unit into position for play



The Storm is a portable basketball goal designed for use in a gymnasium, fieldhouse, multipurpose facility or recreational complex.

The Storm is adjustable. Height adjustments from 10' down to 6' are made easily with the Storm's spring-aided design. To adjust, simply pull the pin located on the adjustment rod, raise or lower the unit as needed and replace the pin.

The distance from the backboard to the base of the unit is 5'6" with the rim at the regulation 10' height and a minimum of 4' can be maintained at all lowered positions. Heavy foam padding, available in an array of colors, protects players on the front, sides and back of the base. The unit is extremely stable as well as durable, and will not tip over when players hang on the rim.

Floor load on the wheels is:

Rolling - 325 psi

Stationary - 325 psi

A variety of backboards ranging in size from 36"x60" to 42"x72" are available on the Storm. This allows the unit to be customized for a wide scope of applications and budgets.

Every Storm package comes with a Lifetime Superior Warranty.

• **HEIGHT ADJUSTABLE** - Pull the pin to adjust the rim to lower heights and the STORM works great for little leagues and youth camps.

• **PORTABILITY** - The STORM rolls easily on large 8" non-marking casters and folds down into a compact storage position requiring less space than similar portables.

## WARNING!

Failure to install customer supplied ballast according to instructions could result in serious injury.



[www.TopHoops.com](http://www.TopHoops.com)

Top Hoops • [info@tophoops.com](mailto:info@tophoops.com) • 888.878.2942



# STORM PACKAGE OPTIONS

## STORM SELECT

- Storm Portable Base Unit
- Base Padding (Any Color)
- FT220 36"x60" Acrylic Backboard
- FT186 Heavy Duty Flex Goal
- Lifetime Superior Warranty
- Approx. Shipping Weight: 1165 lbs.

Packages shown with optional FT60 TuffGuard™ Backboard Padding

Response™  
tempered glass

## STORM PRO

- Storm Portable Base Unit
- Base Padding (Any Color)
- FT230 36"x60" Tempered Glass Backboard
- FT186 Heavy Duty Flex Goal
- Lifetime Superior Warranty
- Approx. Shipping Weight: 1210 lbs.

## STORM SUPREME

- Storm Portable Base Unit
- Base Padding (Any Color)
- FT222 42"x72" Acrylic Backboard
- FT186 Heavy Duty Flex Goal
- Lifetime Superior Warranty
- Approx. Shipping Weight: 1210 lbs.

Packages shown with optional FT72C TuffGuard™ Backboard Padding

Response™  
tempered glass

## STORM ARENA

- Storm Portable Base Unit
- Base Padding (Any Color)
- FT232 42"x72" Tempered Glass Backboard
- FT186 Heavy Duty Flex Goal
- Lifetime Superior Warranty
- Approx. Shipping Weight: 1290 lbs.

RY Royal Blue	SC Scarlet	GL Gold	PR Purple	KG Kelly Green	BK Black	CB Columbia Blue	MR Maroon	GR Grey	NB Navy Blue	OR Orange	FG Forest Green	BR Brick Red	SO Sienna Orange	DG Desert Gold	SB Saddle Brown
------------------	---------------	------------	--------------	-------------------	-------------	---------------------	--------------	------------	-----------------	--------------	--------------------	-----------------	---------------------	-------------------	--------------------

Storm base padding is available in these colors. Shades may vary slightly from color chart.



[www.TopHoops.com](http://www.TopHoops.com)

Top Hoops • [info@tophoops.com](mailto:info@tophoops.com) • 888.878.2942



## FIRST TEAM SPORTS, INC

### Storm Supreme Portable Basketball System - Product Specification

1. **VERTICAL UPRIGHTS AND EXTENSION BOOM** - Two vertical uprights constructed of heavy gauge 2"x 5" rectangular tubing shall support the main extension boom. Both vertical uprights shall each be supported by two 2"x 2" square tubular braces. The main extension boom shall be constructed of heavy gauge 4"x 4" square tubing with a 3"x 3" inner telescoping "slide boom." Backboard to base extension shall be 66" with rim at 10' playing height and a minimum of 48" at lower playing heights. Units without adjustable "slide-boom" extension are not considered equal. Extension boom design shall provide for the direct rim mounting of the rim to the main extension eliminating backboard stress when rim is contacted. Two tubular braces shall further support the upper corners of the backboard.

2. **BASE CONSTRUCTION** - The base is all steel construction comprised primarily of 3" x 1 ½" rectangular steel tubing. The front of the base shall measure 48" across for maximum stability during play. The ballast box (ballast not included) shall be designed to accept (24) 4"x 8"x 16" solid cement blocks each weighing 30 lbs. (720 lbs. total). The unit shall ride on four large 8" non-marking wheels for easy "one person" portability. Units using less than 8" wheels are difficult to move and are not considered equal. The front two wheels shall be on self locking castors (swivel lock & roll lock) which may be easily engaged once unit is positioned for play.

3. **SPRING ASSISTED FOLDING, SETUP AND ADJUSTMENT** - The unit shall operate via "Spring-Assist". Five 3 ½" painted coil springs support the weight of the backboard, rim, extension boom, padding and uprights (NO HYDRAULICS). Coil springs shall be painted to match the color of base. Plated springs are not considered equal due to "hydrogen embrittlement" which takes place during the plating process. Rim height shall be adjustable in six-inch increments from regulation 10' height down to 6' via a removable adjustment pin. The Spring-Assist system is operated easily by one person.

4. **PIVOT POINTS** - All pivot point locations rotate on high load, maintenance free bushings.

5. **BASE, UPRIGHT AND BALLAST BOX PADDING** - Unit shall be equipped with standard 2" thick foam padding mounted on 7/16" wafer board covered with a 14 oz reinforced vinyl laminate. Side pads and ballast box pad use 1 ½" thick foam as standard. Padding shall be secured to unit via 2" velcro attachment straps. Padding need not be removed during folding adjustment, transportation or storage. Colors are available.

6. **FINISH** - Entire unit shall be covered with a black powdercoat finish.

7. **BACKBOARD** - Constructed of 1/2" thick acrylic with bright white screening. The framework shall be constructed from clear anodized aluminum "F" type extrusions. Overall backboard size shall be approximately 72" wide and 42" high.

8. **RIM** - Flexible type so as to absorb the stress of player contact. The rim shall be of institutional quality with an official 5/8" diameter ring. Ring opening diameter shall be the standard 18" I.D. Rim shall have an orange powder coated finish. Heavy-duty nylon net shall be provided. Entire system shall be durably designed and constructed to allow for "dunking" action without compromising structural integrity or stability.

9. **WARRANTY** - Complete unit carries a Lifetime Limited Warranty. Entire system weight shall be approximately 1210#.

**FIRST TEAM SPORTS, INC.**  
**902 COREY ROAD**  
**HUTCHINSON, KS 67501**  
**TOLL FREE: 888-884-6677**



**MODEL LX6324**

 Outdoor  
 Portable  
 Multi-Sport

 Optional "T-Cart"  
 Leg Kit

 Reversible Captions  
 For Baseball, Football,  
 and more

Dimensions	Weight	Cabinet Material	Caption Height	Accent Material
5 ft x 3-1/2 ft	40 lb	Aluminum	4 in	2.4 mil cast vinyl
Digit Height	Indicator Size	Digit Colors	Electrical	
11 in	N/A	Amber or Red	0.8 Amps, 120 VAC	

**STANDARD EQUIPMENT & FEATURES**

- Light weight rust free aluminum cabinet
- Choice of 18 standard paint colors
- Choice of amber or red LED displays
- LED display circuit scoreboards conformal coated for outdoor use
- Internally mounted horn
- Full-sized 37-key control console with LCD display
- Fifty programmable brightness levels
- Control console includes fully programmable Practice Segment Timer mode
- Junction box and patch cable for hardwired installations
- Five-year limited warranty
- Toll free technical support via phone and online for the life of the product

**OPTIONAL EQUIPMENT & UPGRADES**

- Sturdy, easy to assemble leg kit with wheels for portable use
- Custom paint colors
- Team name in place of HOME
- Up to 1,000 feet of data cable for hardwired installations
- ScoreLink Wireless RF modem system for wireless communication
- Additional warranty and support plans

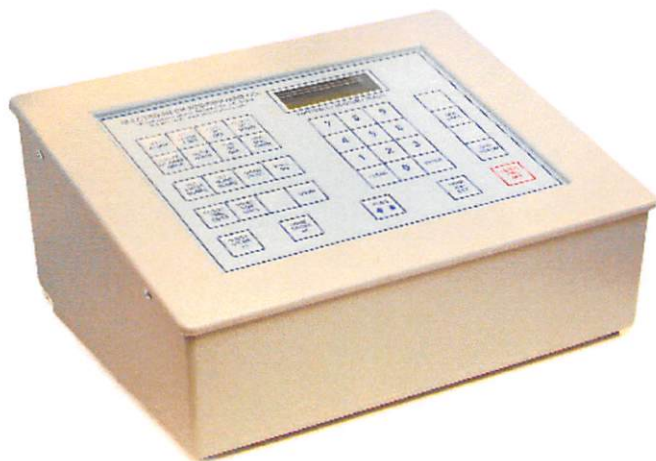
**DIGITS / INDICATORS**

All digits for this model are 11 inches tall and are formed from matrices of super-bright, long-lasting, energy-efficient LEDs (Light Emitting Diodes). Choose either amber or red LEDs for all outdoor products. Our LED assemblies are protected by aluminum masks that allow the hard epoxy shells of the LEDs to be exposed for maximum viewing angles.

**PAINT COLOR OPTIONS**

**Electro-Mech**  
 Scoreboard Company

 72 Industrial Blvd. • Wrightsville, GA 31096  
 www.electro-mech.com • 800-445-7846



## MP-Series Scoreboard Control Console

Available for the following sport pairings:

Basketball / Multi-Sport  
 Basketball Statistics  
 Football / Track  
 Football / Baseball  
 Baseball / Softball  
 Line Score Baseball  
 Soccer / Hockey  
 Soccer / Football

### STANDARD FEATURES

#### User friendly, feature packed software

- Sport-specific configuration (no codes to enter)
- Perfect synchronization with multiple scoreboards
- Supports Electronic Team Names
- Control scoreboard brightness with 50 selectable levels
- Support for wired or wireless data transmission
- Flash memory for saving game data during power loss
- Allows 1/10th seconds to display during the final minute of a Period (except for Baseball)
- Allows Horn to automatically sound at the end of a Period
- Clock counts up or down, or shows Time of Day
- Practice Segment Timer Mode (PST) \*not available for Baseball
  - Program and recall up to 90 Segments for each two-digit Program ID (up to 45 programs)
  - Run PST Programs continuously, or manually start each Segment
  - Optional Interval Time between Segments
  - Optional automatic Horn at the end of each Segment
  - Optional programmable “Flash Time” mode flashes the scoreboard during the final seconds of a Segment

### PHYSICAL DESCRIPTION

#### Membrane Keypad

- 37 dome switches with tactile feedback
- 3M vinyl overlay

#### Liquid Crystal Display (LCD)

- 2 lines with 16 characters per line
- Integrated back light

#### ABS Plastic Enclosure

- Desktop configuration
- Flame retardant, high impact plastic
- Painted steel back plate

#### Dimensions

- Width: 11.5 inches
- Depth: 9 inches
- Height: 5.5 inches
- Weight: 5 pounds

#### Attached 6-ft. power cord

#### Power Requirements

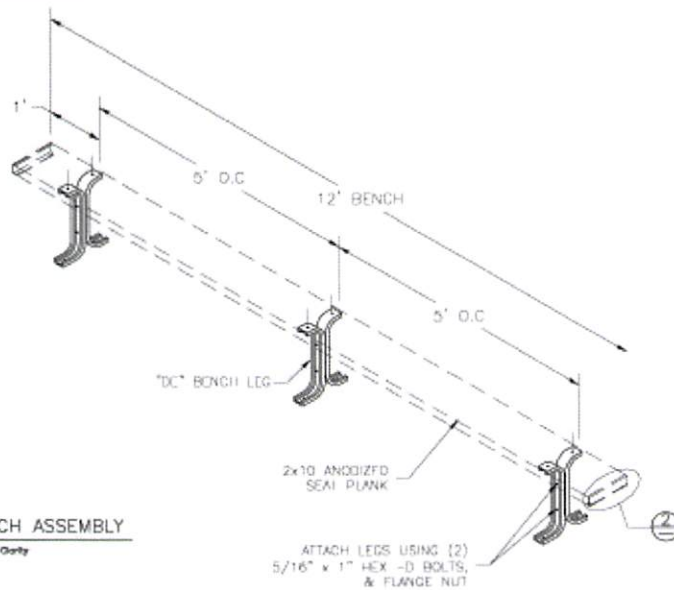
- Voltage: 120 VAC
- Amperage: 0.5 Amps
- AC Frequency: 60 Hz
- Requires standard grounded power receptacle

#### Data Input and Output

- 1/4-inch Stereo Data Output Jack  
(from 1 to 4 jacks, depending on sport)
- RJ-45 style Clock Control Input Jack  
(from 0 to 2 jacks, depending on Clock options)

#### Additional Features

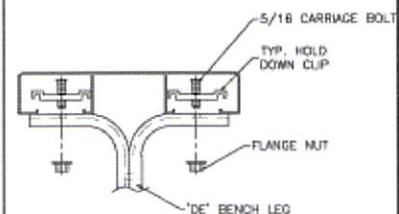
- ETL Listed
- Made in the USA



# ISOMETRIC OF BENCH ASSEMBLY

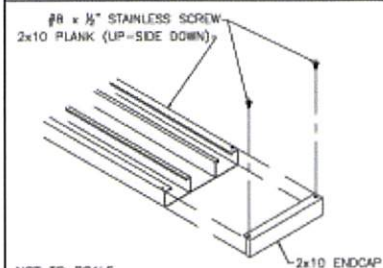
Note: Seal Plank Shown Detail for Clarity

## TYP 2x10 PLANK ATTACHMENT



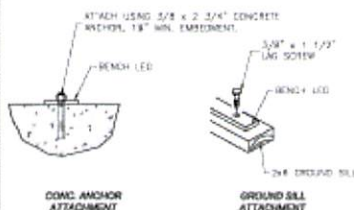
NOT TO SCALE

## TYP 2x10 ENDCAP ATTACHMENT



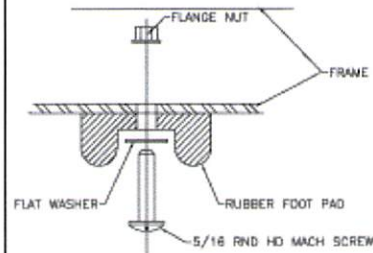
NOT TO SCALE

## TYP ANCHORING DETAIL



NOT TO SCALE

## RUBBER FOOT PAD ATTACH. DETAIL



**builtriteBLEACHERS.com**  
67 Canterbury Ln Southington, CT 06489

SCALE: N.T.S.	APPROVED BY:	DRAWN BY: IMP
DATE: 6/4/12		
TITLE: DE BENCH DIMENSION LAYOUT		
CUSTOMER:		DRAWING NUMBER: BC-P1(DIM)



**QUOTATION**

Quote Date: April 22, 2020

Quote Number: 0043586

Rev. 4/22/2020 13.91135

Page 1 of 2

## Quote Prepared For:

Laramie County  
309 W. 20th St.  
Laramie, WY 82001

## Contact Information and Notes:

Laramie County  
309 W. 20th St.  
Laramie, WY 82001

Customer ID		Payment Terms		Good Through		Sales Rep	
CRM999		NET 30 DAYS		7/22/2020		Kelly Lombard	
Qty.	Item ID	Description				Unit Price	Amount
4	319-40-6324	LX6324,MULTISPORT,5FT X3-1/2FT				2,576.00	10,304.00
	Digit Color	RED DIGITS					
	Face Color	MATTE BLACK					
	Caption Color	WHITE CAPTIONS					
	Stripe Color	WHITE STRIPING					
	Mounting Hardware Type	T-Card Hardware WITH T-CART					
	Console Type	Guest on Left, Home on Right					
	Communication Type	Scorelink Embedded Wireless					
	Team Name Type	STANDARD GUEST AND HOME CAPS					
2	332-40-4000	SL-400 WIRELESS SYSTEM				800.00	1,600.00
	Wireless Type	SL-400 EMBEDDED RX		EMBEDDED TX			
2	332-41-4000	SL-400, RECEIVER, ALL TYPES				400.00	800.00
	Wireless Type	SL-400 EMBEDDED RX					
2	332-39-0305	REMOTE, CLK PLUNGER, RJ-45				40.00	80.00
2	319-40-2180	LX2180,SHOT CLK SET,29IN X27IN				2,288.00	4,576.00
	Stripe Color	WHITE STRIPING					
	Communication Type	Scorelink Embedded Wireless					
4	332-41-4000	SL-400, RECEIVER, ALL TYPES				400.00	1,600.00
	Wireless Type	SL-400 EMBEDDED RX					
2	544-10-4825	CARRYING CASE, CONSOLE				100.00	200.00

**Quote Note**Dan Ange  
307-633-4260  
dange@laramiecounty.com

Net Order: 19,160.00

Freight: 2,500.00

Sales Tax: 0.00

**Quote Total** 21,660.00

Thank you for allowing us the opportunity to quote. Please call if you have any questions. To convert this quotation directly into an order, please provide a signature, purchase order number, and date on the lines shown below.

\_\_\_\_\_  
Signature of Authorized Purchaser\_\_\_\_\_  
Purchase Order Number\_\_\_\_\_  
Date

**QUOTATION**

Quote Date: April 22, 2020

Quote Number: 0043586

Rev. 4/22/2020 13.91135

Page 2 of 2

**Standard Terms and Conditions****Payment Terms:**

Upon acceptance of this proposal, unless another payment schedule is agreed upon in writing, the following Standard Payment Terms shall be applicable:

If Contract includes installation

50% Down payment  
40% Due prior to shipping  
10% Due upon completion of the installation

If Contract is supply only (no installation)

50% Down payment  
50% Due prior to shipping

**Installation**

Unless otherwise, specifically indicated on the attached quotation *and/or* indicated on the attached installation responsibility checklist, this proposal does **not** include the following materials and/or services:

-Stamped Engineered Drawings  
-Additional Structure Dictated by Stamped Drawings  
-Providing Conduit/Raceways  
-Electrical Disconnect or Distribution Equipment  
-Licensing or Permitting

-State & Local Taxes  
-Providing Electrical Service to Location  
-Installation of Foundations  
-Unloading or Storing of Scoreboards  
-Inside Delivery of Scoreboards

**Exclusions**

In the event that Electro-Mech Scoreboard Co. is under contract to perform all of, or a specified portion of the installation of the scoreboard, signage, and/or equipment outlined in the attached quotation, *unless otherwise stated* the proposal does **NOT** include: stamped engineered drawings or costs associated with the addition of structure or footings dictated/required by engineered drawings, auguring/digging of footings, supply, pouring or finishing of concrete, rebar cages for footing reinforcement, metal fabrication for base plates or structure, costs associated with the amendment of unsuitable soils (including but not limited to encountering water/water table, rock removal, backfilling of voids created by rock removal, sandy or silty soil, etc.), removal of excavated materials, or additional return trips due to circumstances not directly controlled by Electro-Mech Scoreboard Co. (e.g. improper power provided, inclement weather, restricted access to the site, etc.)

**Assumptions**

In the event that Electro-Mech Scoreboard Co. is under contract to perform all of, or a specified portion of the installation of the scoreboard, signage, and/or equipment outlined in the attached quotation, *unless otherwise stated* it will be the responsibility of the Owner/Purchaser to ensure the following criteria is met: Electro-Mech will have unobstructed access to the site/location during normal business hours (this access will include entranceways large enough to accommodate the size boom trucks, cranes, and/or lifts as required to perform the scope of work), a clear, unobstructed radius of 50 foot (minimum) around the scoreboard location for the duration of the installation, manufacturer's required power at the location prior to installation, access to power disconnect/breaker(s) for the scoreboard circuit(s), the Owner/Purchaser will be responsible for having a licensed electrician make final power termination.

**Deviance**

If the scoreboard delivery or installation encounters any instance that requires deviation from the agreed upon scope of work and/or pricing, the project may be stopped or delayed until a mutually agreed upon solution is negotiated between the Owner and Electro-Mech Scoreboard Co.

**Acceptance**

The undersigned declares that they have authority to enter into agreement on behalf of the Customer, and acknowledges & agrees to the above stated Terms & Conditions for the attached quotation. Further it is acknowledged that any changes to the agreed upon scope of work that affects pricing must be in writing and will be the responsibility of the Customer. Verbal agreements, changes, or discussion related to pricing or scope of work changes *will not* be valid.

Thank you for allowing us the opportunity to quote. Please call if you have any questions. To convert this quotation directly into an order, please provide a signature, purchase order number, and date on the lines shown below.

\_\_\_\_\_  
Signature of Authorized Purchaser\_\_\_\_\_  
Purchase Order Number\_\_\_\_\_  
Date