



---

# **Cheyenne Safety Action Plan**

Laramie County Board of Commissioners Meeting

---

**June 16, 2026**



# Agenda

---

1. Project Overview
2. Stakeholder & Community Engagement
3. Summary of Crash Analysis Findings
  1. High Injury Network
  2. Focus Areas
  3. Systemic Analysis (High Risk Networks)
4. Recommendations Development
5. Interactive Safety Dashboard
6. Next steps

# Project Overview

---



## Background & Purpose

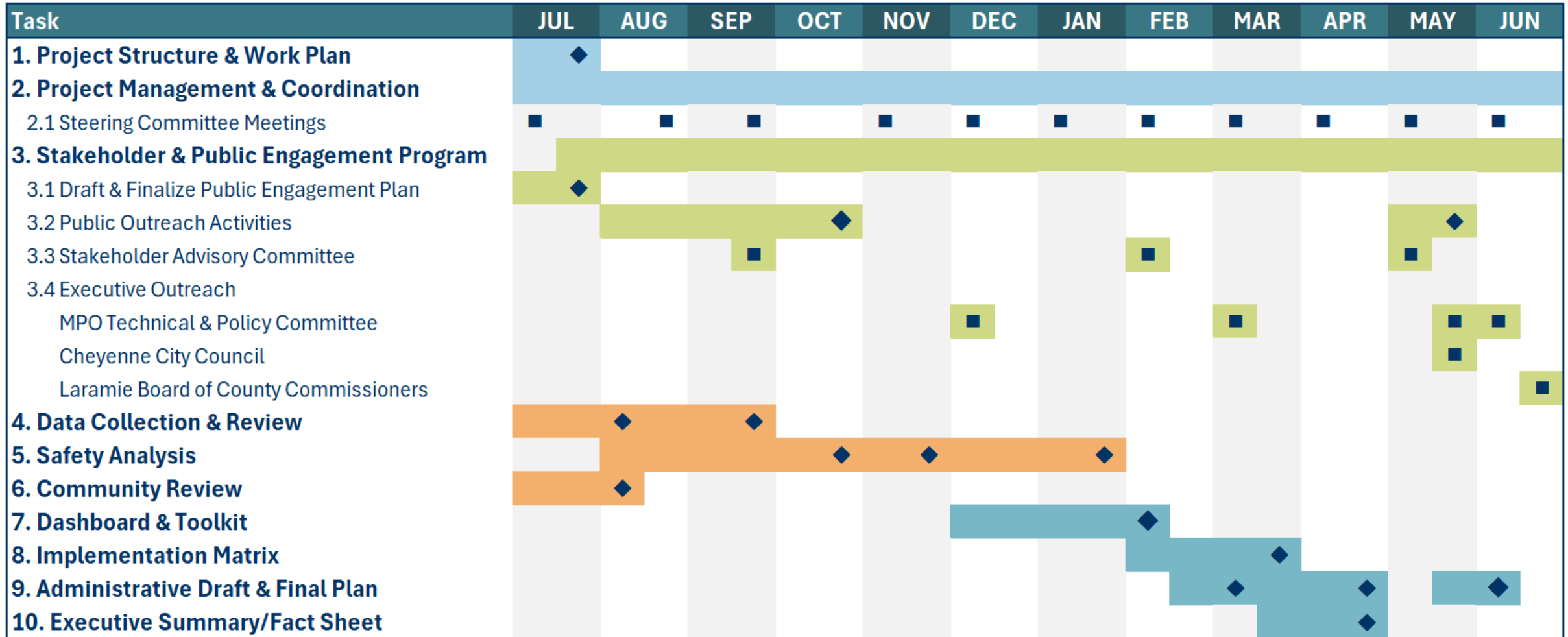
- Funded through the federal *Safe Streets and Roads for All (SS4A)* program
- Builds on Cheyenne MPO's ongoing transportation planning work
- Focused on **reducing serious injuries and fatalities** on the Cheyenne Region's roads

## Goals of the Action Plan

1. Use **crash data** and **community input** to understand where and why crashes happen
2. Identify **high-risk corridors, intersections,** and **systemic issues** across the region
3. Develop practical **strategies** and feasible **safety improvements** for all users (drivers, pedestrians, bicyclists, and transit riders)
4. Provide a **clear roadmap** to guide future investments and make the region more **competitive for federal and state safety funding**



# Schedule & Key Task Overview





# Engagement & Collaboration Approach

---

## Steering Committee

- Consists of key partner agency representatives, meets monthly, provides project oversight and guides decision making.

## Stakeholder Advisory Committee

- Consists of regional partners such as law enforcement, emergency services, healthcare, schools, and more. Represent their respective audiences, help promote engagement.
- Met in September, held a Safety Summit in February that consisted of a workshop to understand what tools will work best, draft plan review in May 2026.

## Community-Wide Engagement

- Phase 1: Gather firsthand insights about travel safety challenges and opportunities, understand community priorities, used to supplement technical analysis.
- Phase 2: Draft plan review, educational and informative, May 2026 (online comments and pop-up at Safe Kids Expo on May 23)



# Safety Analysis

**Objective:** Establish a clear picture of crash trends, including when and where crashes happen, who is involved, and the types of crashes most likely to result in serious injuries or fatalities.

- **Crash History Analysis:** crash records sourced from WYDOT from 2020 to 2024 (5 years)
- **High Injury Network:** corridors and intersections with the most severe crash history
- **Focus Crashes:** crash types and factors most linked to severe crash history
- **Systemic Safety Analysis (High-Risk Factors and Locations):** roadway and community characteristics such as posted speed, level of traffic congestion, schools, parks, etc.

## Rural Focus Areas

1. Broadside Crash Type
2. Head On Crash Type
3. Impaired Drivers
4. Motorcycle Involved
5. Speeding
6. Disregarding Traffic Control

## Urban Focus Areas

1. Dark/Unlighted
2. Approach Turn Crash Type
3. Bicycle/Pedestrian Involved
4. Impaired Drivers
5. Motorcycle Involved
6. Speeding
7. Disregarding Traffic Control (Red Light Running)
8. Ran off the Road
9. Age Under 18 Years Involved



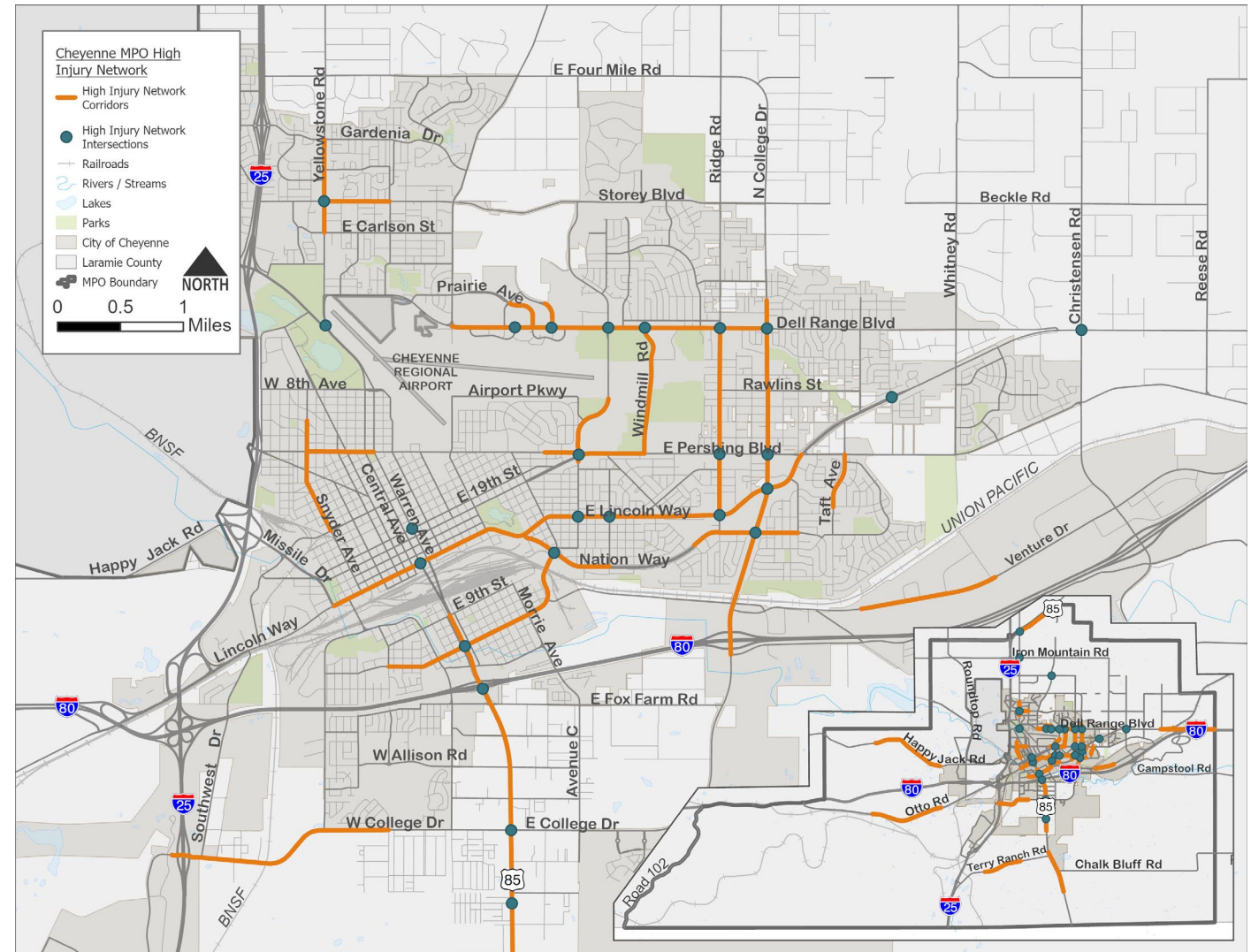
# High Injury Network

## Approach

- Analyzed segment and intersection-related crashes separately
- Analyzed urban and rural contexts separately
- Weighted crashes by severity (fatal crashes count more) and ranked locations

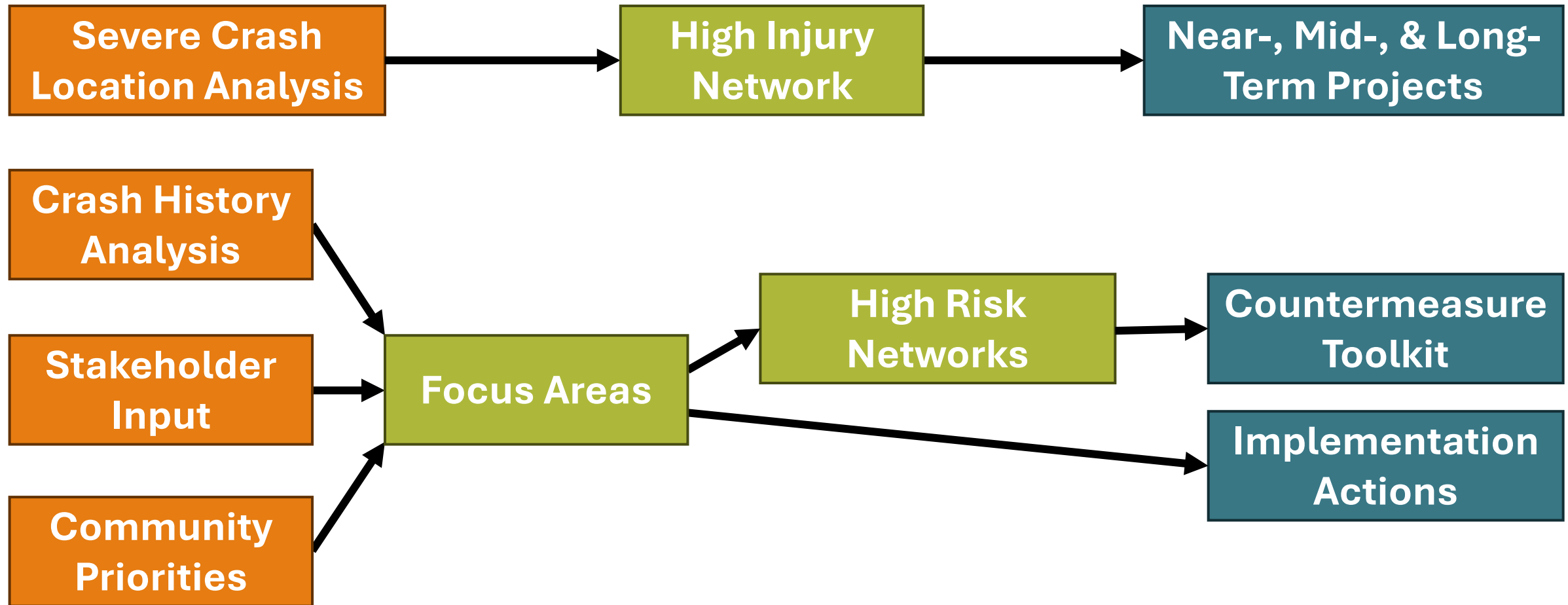
## Result

- **45 miles of roadway** (59% of severe crashes happen on 14% of roads)
- **29 intersections** (30% of severe crashes happen at less than 2% of intersections)





# Implementation





# Location-Specific Projects

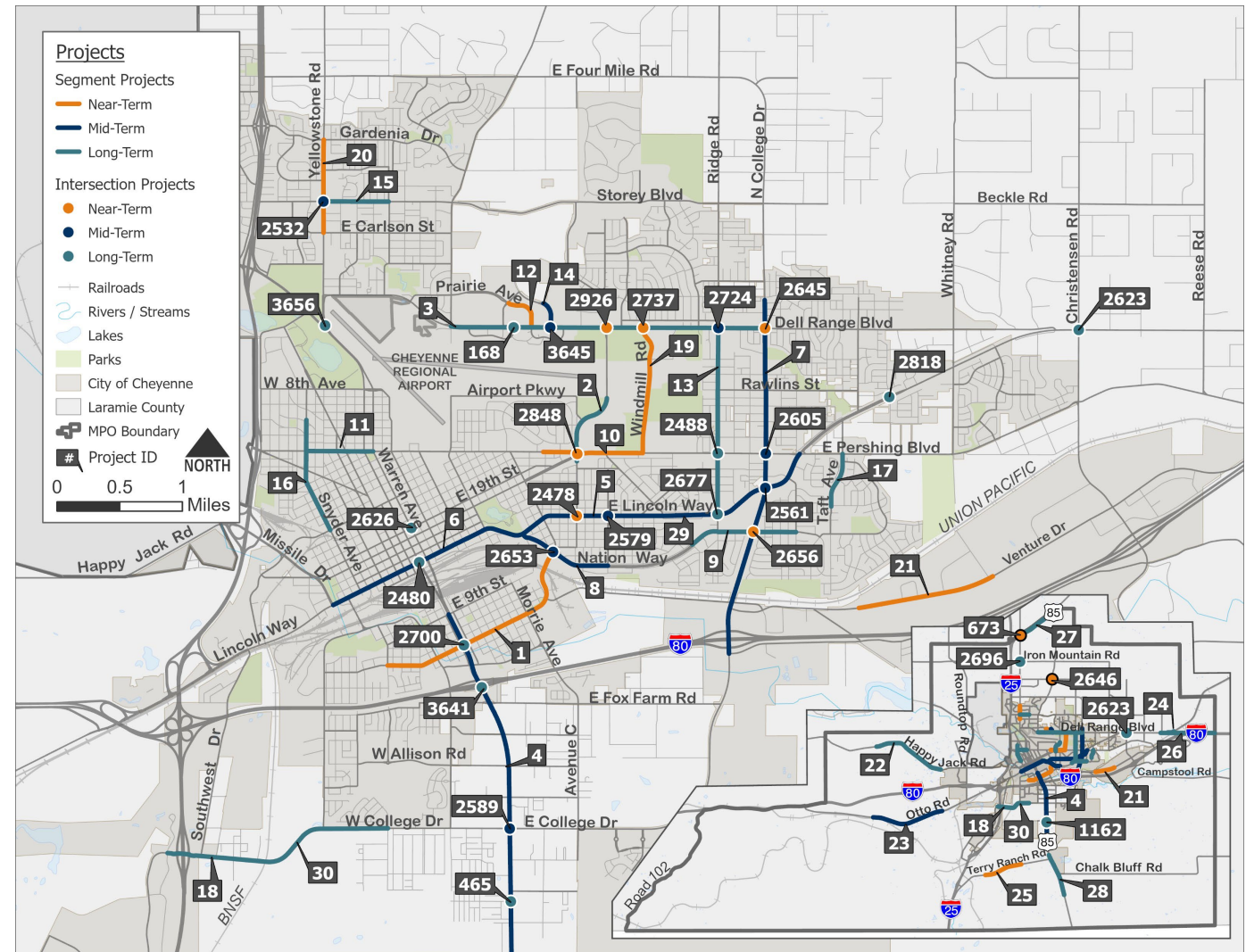
**Near-Term (0-5 years):** 15 projects

**Mid-Term (5-10 years):** 16 projects

**Long-Term (10+ years):** 28 projects

## Prioritization Inputs

- Crash severity
- Crashes involving vulnerable road users
- Overlap with a High Risk Network (HRN)
- Community and stakeholder input
- Agency coordination and input
- Feasibility (cost and related projects already programmed)



# Next Steps



- City of Cheyenne, Laramie County, WYDOT, and partner agencies will lead implementation of projects, programs, and policies
- Safety Action Plan recommendations will help inform future planning, capital improvement, maintenance, and grant funding decisions
- Progress will be tracked through ongoing coordination and annual safety performance monitoring

